



# ***PREMIUM NO-REAM KING PIN KITS***





# ***BUSHING OPTIONS***

---

***SPIRAL STEEL***

***BRONZE***

***GARLOCK***

***NYLON***

# ***SPIRAL STEEL BUSHING***

---



- ❖ ***EASY TO INSTALL***
- ❖ ***LESS LABOR & DOWN TIME***
- ❖ ***INCREASED GREASE CAPACITY***
- ❖ ***LONGER LIFE & WEAR RESISTANCE***

***GREASE GROOVES***



***PROVIDE  
BETTER  
LUBRICATION***



# ***SPIRAL STEEL BUSHING KITS***

---

- ❖ ***LONGER LIFE – FEWER REPAIRS***
- ❖ ***REPAIR TIME REDUCED BY 50%***
- ❖ ***HOLDS 300% MORE GREASE***
- ❖ ***ACCEPTS GREASE WITH WHEELS ON THE GROUND***
- ❖ ***GREASE ALWAYS TRAVELS THE GROOVES***



**STEER KING**

STEER KING

*STEERING AXLE  
KING PIN REPAIR KITS*

WHY????





- ❖ *Founder of ATRO Engineered Systems*
- ❖ *Long line of proven reputable products*
- ❖ *Committed to innovation and engineering*
- ❖ *Superior parts you can rely on*

ADVANCED MATERIAL RESEARCH



SISTER COMPANY







# ***PRECISION MACHINED & GROUND***

---



***MAINTAINING QUALITY & TIGHT TOLERANCES***



**CRITICAL  
DIMENSIONS  
100% INSPECTED  
FOR TRUE FIT**





# MORE GREASE!



**Thrust Bearings Machine Pre-Packed  
with Premium Lithium Grease**



# ***BI-DIRECTIONAL LIP SEAL***

---



***INSTALLS UP OR DOWN***

***KEEPS GREASE IN & DEBRIS OUT***

# ***KEEP YOUR PART\$ TOGETHER***



***OLD MAINTENANCE  
PROBLEMS...***

***NEW  
SOLUTIONS!***

**STEER KING™**



***CLEAN AND ORGANIZED  
EASY OPEN SHOP-READY BOX & TRAY***

---

STEER KING

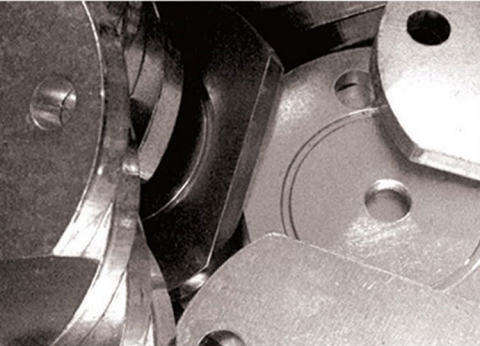


**INDUSTRY LEADING WARRANTY**

---



# NEED SPARE PARTS? STEER KING HAS YOU COVERED







# The T-Handle Install Tool



## SPIRAL BUSHING INSTALL TOOLS



| T-Handle Install Tool |                                       |
|-----------------------|---------------------------------------|
| PART NUMBER           | DESCRIPTION                           |
| SK06L                 | replacement tip for 060               |
| SK09L                 | replacement tip for 090               |
| SKT060L               | long handle fits all other bushings   |
| SKT060S               | short handle fits all other bushings  |
| SKT090L               | long handle fits 14605, 14705, 18005  |
| SKT090S               | short handle fits 14605, 14705, 18005 |

STEER KING

# GROWING PRODUCT LINE

---

- ❖ *TOP 46 SPIRAL KITS IN STOCK*
- ❖ *TOP 35 BRONZE KITS IN STOCK*
- ❖ *MORE IN PROCESS*
- ❖ *PLANNED EXPANSION*
- ❖ *TOP 5 AXLE SLEEVES*
- ❖ *NO-REAM BRONZE KITS*
- ❖ *T-HANDLES & BRONZE DRIVERS*





| AVL ? | Steer King Spiral SKS | AVL ? | Steer King Bronze SKB | Make        | Pin Type | King Pin Dimensions | Spindle Bore Dimensions | Axle Bore Dimensions | STEMCO / Kaiser Qwik Kit |
|-------|-----------------------|-------|-----------------------|-------------|----------|---------------------|-------------------------|----------------------|--------------------------|
| X     | SKS0793118            | X     | SKB0793118            | ROCKWELL    | B        | 1.794 x 10.40       | 1.919/1.921             | 1.795/1.797          | KG931R                   |
| X     | SKS0890112            |       | SKB0890112            | ROCKWELL    | B        | 1.999 x 11.04       | 2.124/2.126             | 2.000/2.002          | KH901L                   |
| X     | SKS0893106            |       | SKB0893106            | FORD        | B        | 1.999 x 11.21       | 2.124/2.126             | 2.000/2.002          | KH931F                   |
| X     | SKS0893112            | X     | SKB0893112            | ROCKWELL    | B        | 1.999 x 11.21       | 2.124/2.126             | 2.000/2.002          | KH931L                   |
| X     | SKS10109              |       | SKB10109              | IH          | A        | 1.359 x 7.97        | 1.486/1.485             | 1.358/1.360          | K101I                    |
| X     | SKS10209              | X     | SKB10209              | IH          | B        | 1.359 x 7.97        | 1.486/1.485             | 1.358/1.360          | K102I                    |
| X     | SKS10319              | X     | SKB10319              | DANA        | C        | 1.359 x 7.97        | 1.483/1.485             | 1.358/1.360          | K103S                    |
| X     | SKS12001              | X     | SKB12001              | ALLIANCE    | B        | 1.771 x 9.23        | 2.045/2.047             | 1.772/1.774          | K120A                    |
| X     | SKS12005              | X     | SKB12005              | EATON       | A        | 1.625 x 9.19        | 1.749/1.750             | 1.626/1.627          | K120E                    |
| X     | SKS12008 <sup>A</sup> | X     | SKB12008 <sup>A</sup> | HENDRICKSON | H/A      | 1.810 x 9.54        | 1.937/1.939             | 1.811/1.812          | K120H                    |
| X     | SKS12009 <sup>B</sup> | X     | SKB12009 <sup>B</sup> | IH          | B        | 1.921 x 9.87        | 2.045/2.047             | 1.922/1.923          | K120I                    |
| X     | SKS12018              |       | SKB12018              | ROCKWELL    | B        | 1.794 x 10.40       | 1.919/1.921             | 1.795/1.797          | K120R                    |
| X     | SKS12205 <sup>A</sup> | X     | SKB12205 <sup>A</sup> | EATON       | A/C      | 1.794 x 9.05        | 1.919/1.921             | 1.794/1.796          | K122E                    |
| X     | SKS12305              | X     | SKB12305              | DANA        | C        | 1.794 x 9.05        | 1.919/1.921             | 1.794/1.796          | K123E                    |
| X     | SKS12311              |       | SKB12311              | LINK        | A        | 1.794 x 9.05        | 1.919/1.921             | 1.794/1.796          | K123K                    |
| X     | SKS12523              | X     | SKB12523              | WESTPORT    | A        | 1.810 x 10.56       | 1.937/1.939             | 1.811/1.812          | K125W                    |
| X     | SKS12623              | X     | SKB12623              | WESTPORT    | A        | 1.810 x 10.56       | 1.936/1.938             | 1.811/1.812          | K126W                    |
| X     | SKS12723              | X     | SKB12723              | WESTPORT    | A        | 1.810 x 10.56       | 1.936/1.938             | 1.811/1.812          | K127W                    |
| X     | SKS13018              | X     | SKB13018              | ROCKWELL    | B        | 1.794 x 9.02        | 1.919/1.921             | 1.795/1.797          | K130R                    |
| X     | SKS13023              | X     | SKB13023              | WESTPORT    | B        | 1.794 x 10.40       | 1.919/1.921             | 1.795/1.797          | K130W                    |
| X     | SKS13108              | X     | SKB13108              | HENDRICKSON | A        | 1.810 x 9.54        | 1.937/1.939             | 1.811/1.812          | K131H                    |



|   |                       |   |                       |             |     |               |             |             |        |
|---|-----------------------|---|-----------------------|-------------|-----|---------------|-------------|-------------|--------|
| X | SKS13211              |   | SKB13211              | LINK        | A   | 1.794 x 9.05  | 1.919/1.921 | 1.794/1.796 | K132K  |
| X | SKS14119 <sup>B</sup> | X | SKB14119 <sup>B</sup> | IH / SPICER | B   | 2.046 x 10.12 | 2.171/2.173 | 2.04/2.048  | K141S  |
| X | SKS14605 <sup>A</sup> | X | SKB14605 <sup>A</sup> | EATON       | A/C | 1.872 x 9.05  | 2.057/2.058 | 1.873/1.875 | K146E  |
| X | SKS14705              | X | SKB14705              | DANA        | C   | 1.872 x 9.05  | 2.057/2.058 | 1.873/1.875 | K147E  |
| X | SKS14905              | X | SKB14905              | KIMBLE      | C   | 1.872 x 9.05  | 2.057/2.058 | 1.873/1.875 | K149E  |
| X | SKS16019              | X | SKB16019              | SPICER      | B   | 2.046 x 11.00 | 2.171/2.173 | 2.047/2.048 | K160S  |
| X | SKS16119              | X | SKB16119              | DANA        | B   | 2.046 x 11.00 | 2.171/2.173 | 2.047/2.048 | K161S  |
| X | SKS18005              | X | SKB18005              | EATON       | A   | 1.872 x 9.97  | 2.057/2.058 | 1.873/1.875 | K180E  |
| X | SKS18018              | X | SKB18018              | ROCKWELL    | B   | 1.999 x 11.21 | 2.124/2.126 | 2.000/2.002 | K180R  |
| X | SKS18118              | X | SKB18118              | ROCKWELL    | B   | 1.999 x 11.21 | 2.124/2.126 | 2.000/2.002 | K181R  |
| X | SKS20019              |   | SKB20019              | DANA        | B   | 2.046 x 10.07 | 2.171/2.172 | 2.047/2.048 | K200S  |
| X | SKS20119              |   | SKB20119              | DANA        | C   | 2.046 x 10.07 | 2.171/2.172 | 2.047/2.048 | K201S  |
| X | SKS53313              |   | SKB53313              | MACK        | F   | 1.625 x 7.46  | 1.749/1.751 | Tapered     | K533M  |
| X | SKS53613              |   | SKB53613              | MACK        | E   | 2.360 x 8.92  | 2.559/2.561 | Tapered     | K536M  |
| X | SKS61613              |   | SKB61613              | MACK        | F   | 2.125 x 8.75  | 2.499/2.501 | Tapered     | K616M  |
| X | SKS7018               | X | SKB7018               | MERITOR     | B   | 1.499 x 7.15  | 1.626/1.628 | 1.501/1.503 | K70R   |
| X | SKS8018               | X | SKB8018               | ROCKWELL    | B   | 1.500 x 7.50  | 1.626/1.628 | 1.501/1.503 | K80R   |
| X | SKS93112              | X | SKB93112              | ROCKWELL    | B   | 1.794 x 10.40 | 1.919/1.921 | 1.795/1.797 | K931L  |
| X | SKS94106              | X | SKB94106              | FORD        | B   | 1.794 x 10.07 | 1.919/1.921 | 1.795/1.797 | K941F  |
| X | SKS9410601            | X | SKB9410601            | FORD        | B   | 1.794 x 10.07 | 1.919/1.921 | 1.795/1.797 | K941FA |
| X | SKS94118              | X | SKB94118              | ROCKWELL    | B   | 1.500 x 8.93  | 1.626/1.628 | 1.501/1.503 | K941R  |
| X | SKS94206              | X | SKB94206              | FORD        | B   | 1.794 x 10.07 | 1.919/1.921 | 1.795/1.797 | K942F  |
| X | SKS9420601            | X | SKB9420601            | FORD        | B   | 1.794 x 10.07 | 1.919/1.921 | 1.795/1.797 | K942FA |
| X | SKS96112              | X | SKB96112              | ROCKWELL    | B   | 1.794 x 10.40 | 1.919/1.921 | 1.795/1.797 | K961L  |
| X | SKS98118              | X | SKB98118              | ROCKWELL    | B   | 1.794 x 8.87  | 1.920/1.921 | 1.795/1.797 | K981R  |





**STEER KING™**

**WELCOME TO THE NEW  
BRONZE AGE**

**HIGH PERFORMANCE ENGINEERING**



**THE NO-REAM BRONZE BUSHING KING PIN KIT  
NOW WITH AN INDUSTRY LEADING WARRANTY**



# Bronze Bushing & Seal Driver

## BRONZE BUSHING INSTALL TOOLS



Bronze Bushing Driver Install Tools / Grease Lip Seal Tool

| STEER KING<br>Bronze Driver | Kaiser Driver<br>Cross Ref | Kits Used On                                       | STEER KING<br>WD Price |
|-----------------------------|----------------------------|--|------------------------|
| SKPT102I                    | ST70-2                     | SKB10209, SKB10319                                 | \$31.25                |
| SKPT120A                    | n/a                        | SKB12001, SKB12523, SKB12623, SKB12723             | \$41.75                |
| SKPT120E                    | ST70-6                     | SKB12005   | \$41.75                |
| SKPT120H                    | n/a                        | SKB12008, SKB13108                                 | \$41.75                |
| SKPT120I                    | ST70-19                    | SKB12009   | \$41.75                |
| SKPT122E                    | ST70-7                     | SKB0793118, SKB12205, SKB13023, SKB93112, SKB96112 | \$41.75                |
| SKPT147E                    | ST70-23                    | SKB14605, SKB14705, SKB14905, SKB18005             | \$41.75                |
| SKPTH931L                   | ST70-12                    | SKB0893118, SKB18118                               | \$41.75                |
| SKPT141S                    | ST70-24                    | SKB14119   | \$50.00                |
| SKPT941R                    | ST70-28                    | SKB7018, SKB8018, SKB94118                         | \$41.75                |

**THE BRONZE BUSHING DRIVER  
ENSURES A CORRECT NO-REAM FIT**

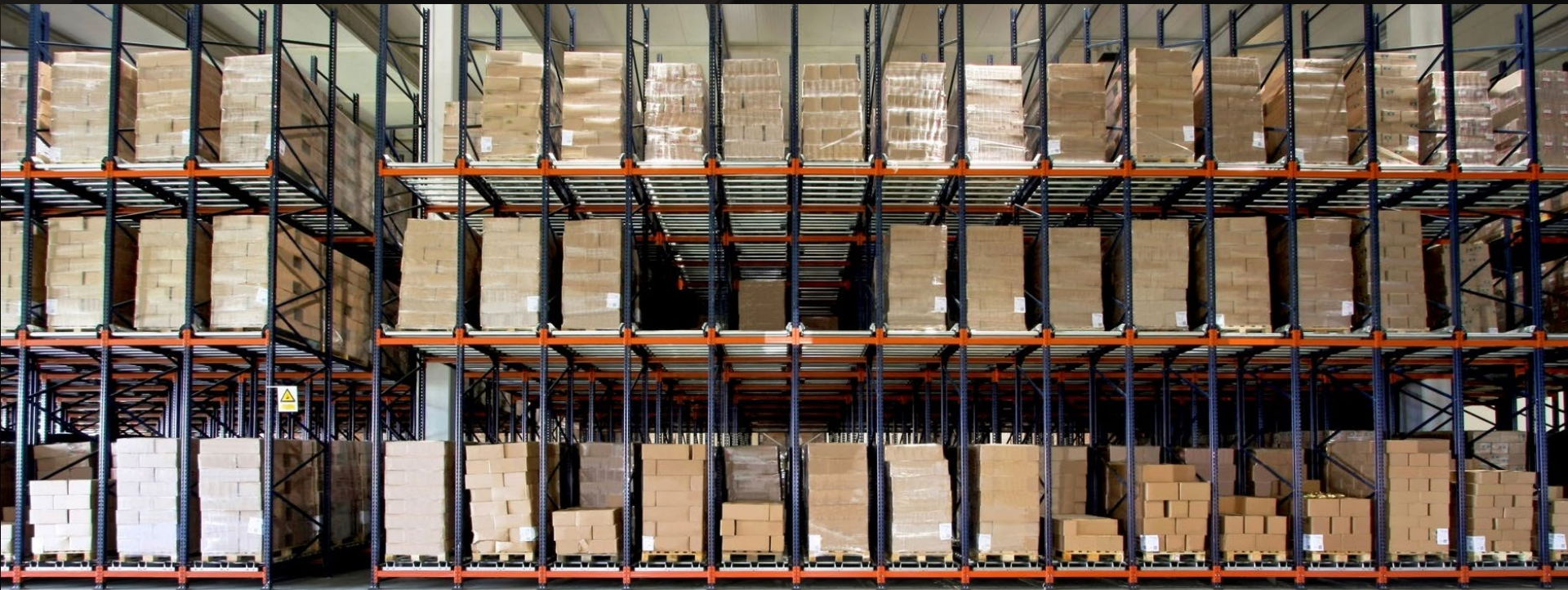
**THE REVERSE END IS USED FOR  
GREASE LIP SEAL INSTALLATION**



***PRE-PAID FRIEGHT***

***\$750 (4-5 KITS)***

***AND NO MINIMUM ORDERS!***





STEER KING

# ***SAME DAY SHIPPING***

---

***AVAILABLE ON APPROVED ACCOUNTS***

***ORDER BY 2:30 PM CST***

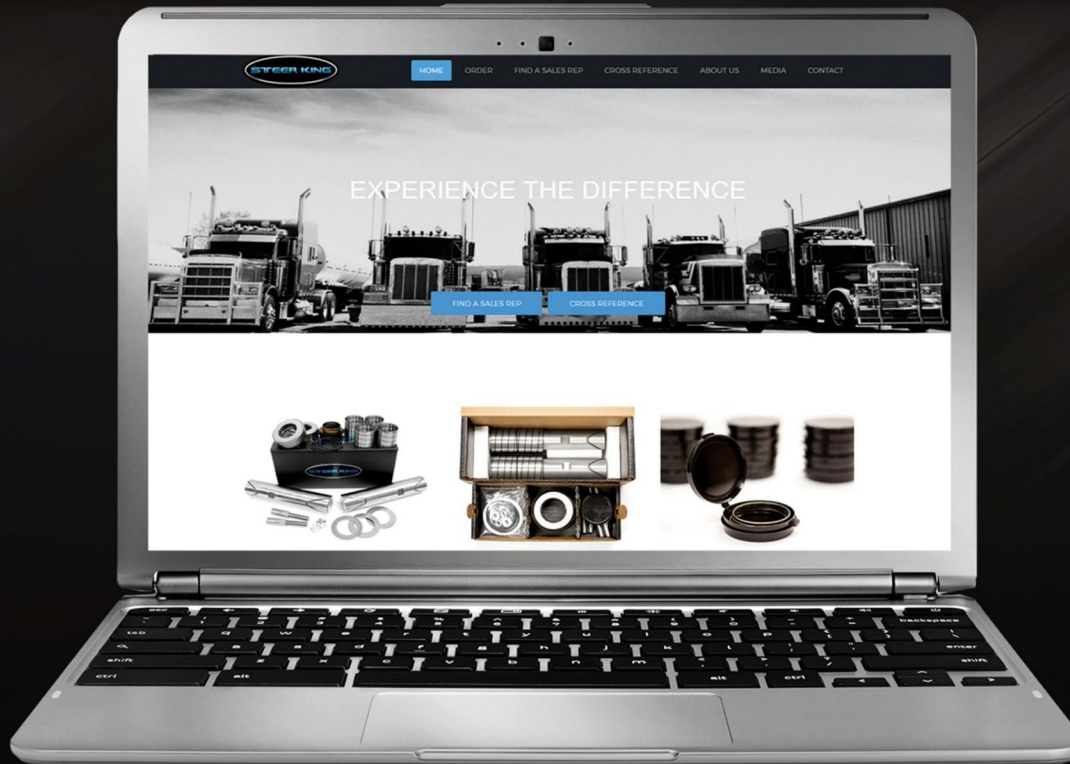
- ❖ ***FedEx Ground***
- ❖ ***XPO Freight***
- ❖ ***Centrally Located in MO (2-3 Day Delivery)***
- ❖ ***Additional Warehouses in WA and OR***
- ❖ ***Planned Expansion***



# DIGITAL TOOLS

---

*Cross Reference - Online Ordering - Sales Rep Locator*





# ***MARKETING SUPPORT***

---

- ❖ ***Product Release Updates***
- ❖ ***Email Blasts to Market Segments***
- ❖ ***Aftermarket Advertising***
- ❖ ***Custom Shop Flyers Available for  
Sales Staff & Events***

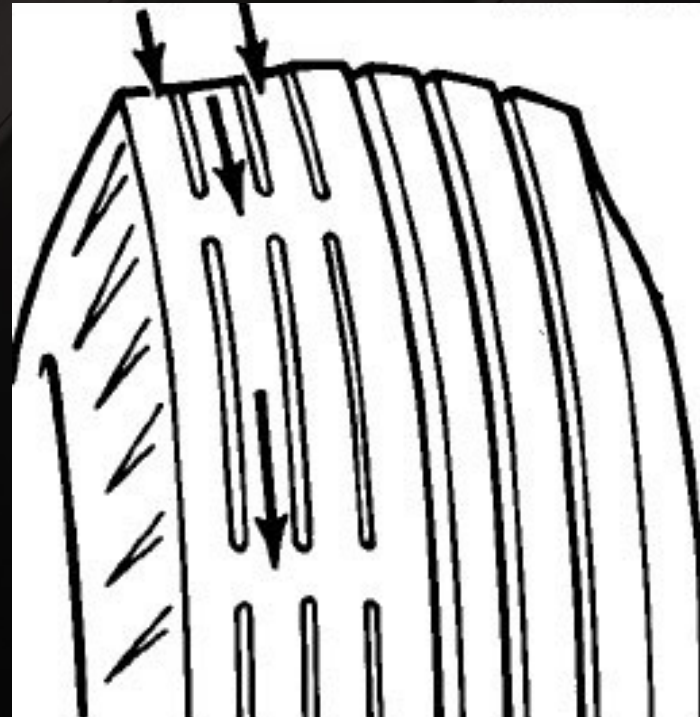
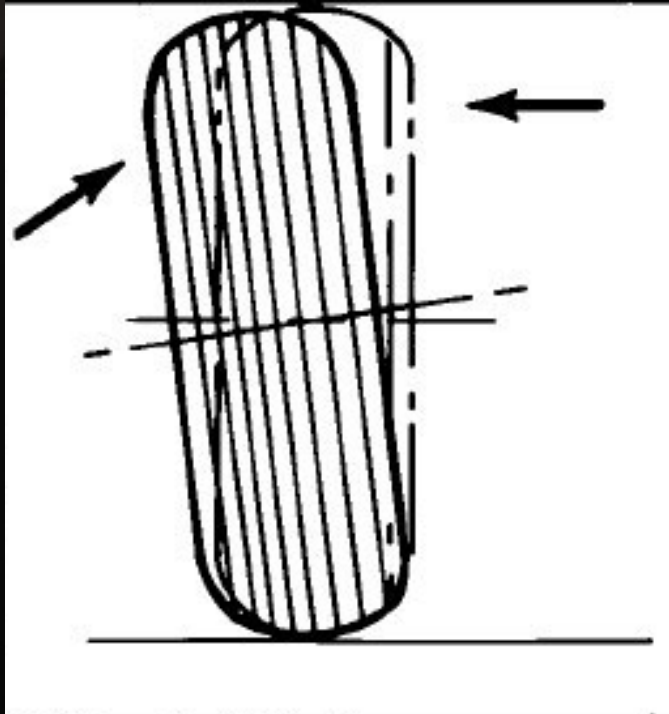


# *King Pin Installation*





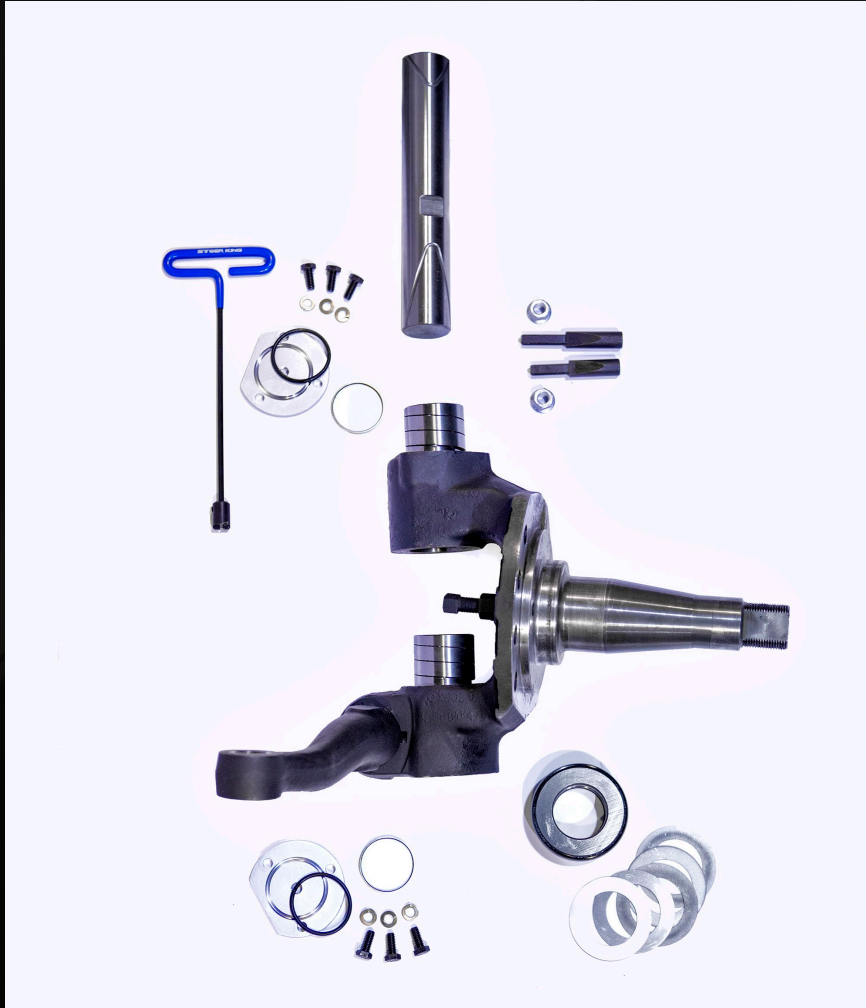
# ***Common Signs of King Pin / Bushing Wear***



***Wear on one side***  
***Excessive camber***



# *Everything You Need In One Box*





# *Clean Axle Eye Bore*





# *Remove All Debris*







# *Test For Slip Fit*





***Clean  
Spindle Eye  
Bore***





# *Remove All Debris*





# ***Twist In Spiral Bushing***





# ***Install Grease Lip Seal with Driver***



***Tap With Brass Hammer Until Flush***



# *Use T-Handle Or Pliers To*



*Twist in Spiral Bushing, Tap Flush With Driver*



# *Repeat Procedure With Bottom Bushing*





# *Check For Spindle Slip Fit*







# *Install Shims*





# *Fit Over Axle Eye*





# ***Slip Pin Through Top Bushing***



# ***Insert Thrust Bearing***



# *Align "TOP" Parallel With Lock Pin Holes*





# ***Install Lock Pins***



***Tighten Lock Nuts to Torque Spec***



# ***Install End Caps & Grease Fittings***





# ***Check Side To Side Action***



# *Fill With Grease*



*Until Seen  
Above Axle Bore  
And Under Bearing*







# ***STEER KING BENEFITS SUMMARY***



# ***SPIRAL STEEL BUSHING KITS***

---

- ❖ ***LONGER LIFE – FEWER REPAIRS***
- ❖ ***REPAIR TIME REDUCED BY 50%***
- ❖ ***HOLDS 300% MORE GREASE***
- ❖ ***GREASE WITH WHEELS ON THE GROUND***
- ❖ ***GREASE ALWAYS TRAVELS THE GROOVES***



**HIGH PERFORMANCE SUPERIOR QUALITY  
NO-REAM KING PIN REPAIR KITS**

***Thank You For Your Time!!***

**Steer King is disrupting the Heavy Duty Aftermarket through advanced manufacturing and innovative engineering. Our kits have been designed from the ground up to *perform better, last longer and install quicker.***

**This saves the shop, the fleet and the end user *time.*  
*And we all know what time is.***