

PREMIUM NO-REAM KING PIN REPAIR KITS

2019



CROSS REFERENCE & APPLICATION GUIDE



AN AMERICAN ENGINEERING COMPANY

SteerKing.com



Why Choose Steer King?



QUALITY ✓

- Disruptive Engineering & Product Design
- High Quality Materials & Processing
- Unbeatable Wear Resistance & Durability
- 100% Inspected Critical Dimensions
- 3 Year Warranty on Spiral Kits
- 2 Year Warranty on Bronze Kits
- Pre-Packed Bearings Save Time & Money
- Bi-Directional Seals Save Time & Money

DELIVERY ✓

- Same Day Shipping
- Low Pre-Paid Freight
- No Shipping Up Charges
- No Minimum Orders
- Secure Shop-Ready Box
- Centrally Located
- Northwest Warehouses
- Planned Expansion

SERVICE ✓

- Competitive Pricing
- National Independent Sales Reps
- Fast, Personal, Friendly Service
- Order by Phone, Fax, Email or Web
- No-Hassle Replacement Parts
- On-Site Product Training
- Sales & Marketing Support
- New Parts In Development

2019 CROSS REFERENCE & APPLICATION GUIDE

TABLE OF CONTENTS

2-3 PREMIUM NO-REAM KING PIN REPAIR KITS

4 INDUSTRY LEADING WARRANTY

5 RETURN POLICY

6-15 OEM AXLE APPLICATIONS

TRUCK AXLES

- 6 ALLIANCE AXLE
- 6 CHEVROLET
- 6 CLARK
- 6-7 DODGE
- 7 EAGLE
- 7 EATON
- 7-8 FORD
- 8 FREIGHTLINER
- 8 FWD
- 8-9 GMC
- 9 HENDRICKSON
- 9 HINO
- 9 IMT / INGERSOLL
- 9-10 INTERNATIONAL / NAVISTAR
- 11 ISUZU
- 11 KENWORTH
- 11 KGI

11 KIMBLE MIXER

- 11 LINK
- 11 MACK
- 11 MAN
- 11 MCI
- 11 MCNELIUS MTM
- 11 MITSUBISHI
- 11 NEW FLYER
- 11 PETERBILT
- 11 RIDEWELL
- 11-12 ROCKWELL / MERITOR
- 12-13 SPICER / DANA / EATON
- 13 STERLING
- 13 VOLVO
- 14 WATSON & CHALIN
- 14 WHITE / WESTPORT
- 14 WORKHORSE

BUS AXLES

- 15 BLUEBIRD
- 15 FORD
- 15 GILLIG
- 15 GMC COACH
- 15 INTERNATIONAL / NAVISTAR
- 15 MAN
- 15 MCI
- 15 NEO PLAN
- 15 NEW FLYER
- 15 ROCKWELL / MERITOR
- 15 THOMAS

AVL #	Steer King Spiral SKS	AVL #	Steer King Bronze SKB
X	SKS0703118	X	SKB0703118
X	SKS0803106	X	SKB0803106
X	SKS0803112	X	SKB0803112
X	SKS10209	X	SKB10209
X	SKS10319	X	SKB10319

**PLEASE CHECK
KIT AVAILABILITY
IN BACK pg 35-37**

16-30 COMPETITIVE CROSS REFERENCE

- | | | | | |
|-----------------------|----------------------|----------------|--------------------------|--------------------|
| 16 ALLIANCE AXLE | 18-19 EATON TOP-SPEC | 23 ISUZU | 25 NEW FLYER | 28-29 TRW |
| 16 AUTOCAR | 19-20 ELGIN | 23 KENWORTH | 25 NEW STAR S & S | 29 TW |
| 16 AUTOMANN | 20 EUCLID | 23 KGI | 25 OTTAWA | 29 VOLVO-WHITE |
| 16 BLUEBIRD | 20-21 FLAGG | 23 KIMBLE | 25 PETERBILT | 29 WATSON-CHALIN |
| 16 BWP | 21 FLEETRITE | 23-24 MACK | 25 RIDEWELL | 29-30 WESTERN STAR |
| 16-17 CHEVROLET / GMC | 21-22 FORD | 24 MAN | 25-26 ROCKWELL | 30 WESTPORT |
| 17 DANA / NAPA | 22 FREIGHTLINER | 24 MCI BUS | 26 SEALED POWER | 30 WORKHORSE |
| 17-18 DAYTON | 22 GILLIG | 24 MITSUBISHI | 26-27 SPICER | |
| 18 DODGE | 22-23 HD PLUS | 24 MOOG | 27-28 STEMCO / KAISER | |
| 18 E-ONE | 23 HENDRICKSON | 24-25 NAVISTAR | 28 THOMAS BUS | |
| 18 EATON | 23 IMT / INGERSOLL | 25 NEO PLAN | 28 TRAYER / ROAD LEVELER | |

31 INSTALLATION TOOLS

32-33 NATIONAL INDEPENDENT SALES REPS

34 PERSONAL CUSTOMER SERVICE

35-37 AVAILABILITY & DIMENSIONS



DISCLAIMER

PRODUCT MODELS, NAMES, BRANDS AND TRADEMARKS DEPICTED ARE THE SOLE PROPERTY OF THEIR RESPECTIVE OWNERS AND NOT ASSOCIATED WITH STEER KING EXCEPT WHERE INDICATED, AND USED ONLY FOR THE PURPOSE OF ASSISTING CUSTOMERS IN IDENTIFYING REFERENCE PARTS. EVERY EFFORT HAS BEEN MADE TO ENSURE THE ACCURACY OF THE INFORMATION SHOWN. HOWEVER, STEER KING ASSUMES NO LIABILITY FOR ANY ERRORS OR OMISSIONS IN THE INFORMATION PROVIDED. TO ORDER CATALOGS PLEASE EMAIL OR CALL YOUR AREA SALES REP, PG 20.

**BI-DIRECTIONAL
GREASE SEALS**

Fast install up or down,
keeps grease in and
contaminates out

**MACHINE PRE-PACKED
THRUST BEARINGS**

Saves time and has
more grease which
means longer life

**PRECISION ENGINEERED
NO-REAM BUSHINGS**

Fast installation and
premium wear resistance



**CRITICAL DIMENSIONS
ARE 100% INSPECTED**

Smooth installation and
correct fit on both sides

**PREMIUM STRENGTH
GREASE-GROOVED KING PINS**

Correct fit install and grease
circulation for increased
wear resistance and long life

EASY INSTALL + LOW DOWN TIME + LONG LIFE

THE FUTURE OF KING PIN REPAIRS

KEEP YOUR PART\$ TOGETHER!

**SHOP-READY BOX
& PARTS TRAY**

Keeps parts together
and work area organized



SECURE PACKAGING

Prevents freight damage
and loose / lost parts

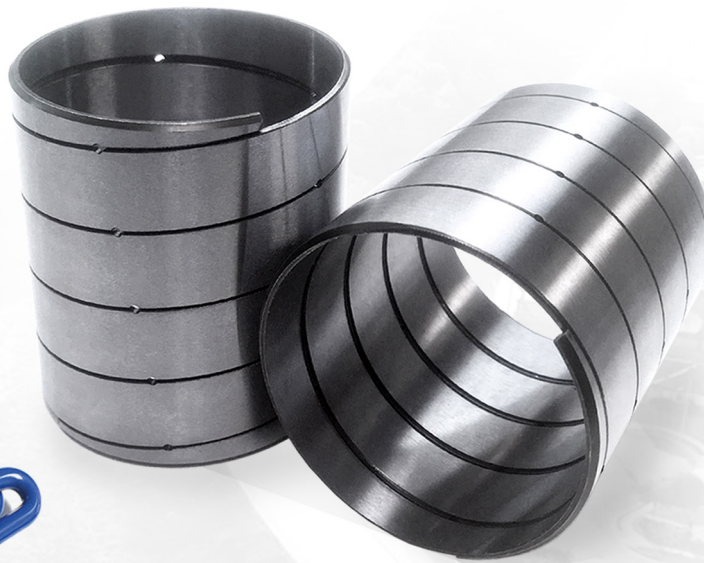
**REPLACEMENT PARTS
AVAILABLE**

Shims, pins, bushings, nuts,
bolts, seals, bearings
We have you covered!

NO-REAM STEEL SPIRAL



Spiral Bushing
T-Handle Install Tool



EASY INSTALL
MAX LIFE



**UNBEATABLE
WEAR RESISTANCE**

HIGH-PERFORMANCE KITS WITH INDUSTRY LEADING WARRANTIES

NO-REAM BRONZE



Bronze Bushing
& Seal Driver Tool



MORE GREASE
LONGER LIFE



**WELCOME TO THE
NEW BRONZE AGE**

STEER KING NO-REAM **SKS SPIRAL
KING PIN REPAIR KITS**



STEER KING NO-REAM **SKB BRONZE
KING PIN REPAIR KITS**



Steer King warrants the parts contained in Steer King No-Ream King Pin Repair Kits to be free from defects in material and workmanship, under normal use and maintenance for a period of **3 years for the SKS Spiral Kits** and **2 years for the SKB Bronze Kits**, from the date of installation. This warranty shall be limited to replacing or allowing credit for the parts contained in the Steer King Kit provided that notice and proof of defect is promptly given. This warranty does not apply to damage or to defects in any parts contained in the Steer King Kit caused by misuse, neglect, accident, incorrect installation, alteration or repair.

THIS WARRANTY AND THE MANUFACTURER'S OBLIGATION HEREUNDER IS IN LIEU OF ALL OTHER WARRANTIES, EXPRESS, IMPLIED OR STATUTORY, INCLUDING ANY WARRANTIES OF MERCHANTABILITY OR FITNESS FOR PARTICULAR PURPOSE, AND ALL OTHER OBLIGATIONS OR LIABILITIES, INCLUDING SPECIAL OR CONSEQUENTIAL DAMAGES.

Steer King shall not be liable for any claim in excess of the purchase price. Steer King shall not be liable for indirect, consequential, losses or damages of any kind.

WARRANTY IS VOID IF NON-STEER KING PARTS ARE USED IN STEER KING KIT INSTALLATIONS.

All parts returned under warranty must include the RMA Form and complete maintenance history and information of the vehicle from which parts were removed for SERVICE ANALYSIS prepaid to: **Steer King - 101 Industrial Park Dr. - Sullivan, MO 63080**. Items approved as defective under terms of the warranty will be replaced. All claims will receive a SERVICE ANALYSIS report. Please contact your Sales Rep to request an RMA Form. This form must be filled out and included with the returned parts along with all required information.

RMA POLICY (RETURN MERCHANDISE AUTHORIZATION)

Steer King recognizes that upon new account approval there is a need to have adequate starting inventory as well as the concern of potentially ordering wrong part numbers in the beginning that result in non-moving inventory.

To ensure new accounts can avoid overstocking non-moving items, Steer King has created the below One Time Opening Order Return Policy and the Annual Parts Return Policy.

To request an RMA for the return and evaluation of any parts or kits under warranty, in the opening order, or as an annual return please call your sales rep that set up the account or call Steer King Customer Service direct at 1-877-741-2111. To find your sales rep visit us online at www.SteerKing.com

One Time Opening Order Return Policy:

During or at the end of the first year, Steer King will accept a one-time return of all non-moving products on a 1:1 offsetting basis in exchange for product kit #s that account is actively selling. 1:1 means that the dollar amount of the returned kits must be met at a minimum with the offsetting order.

Annual Parts Return Policy:

- Any returns after the first year will be included in this Annual Parts Return Policy.
- Annual returns should be no more than 2% of the previous year's purchases.
- The request must include a 2:1 offsetting order. 2:1 means that a new order must be made for at minimum double the dollar amount of the kits being returned. For example: a \$100 return should be met with an offsetting order of \$200.
- All kits/parts must be in re-sellable condition or limitations and restocking fees may apply.
- Parts not accepted: obsolete / discontinued / not listed on price sheet.
- Shipping cost of the return is the responsibility of the distributor account.
- Returns should be initiated through the local Steer King sales rep and should include a list of the parts requested to be returned along with a request for an RMA #. Once the list has been reviewed & approved by Steer King, an RMA # will be issued for the return of the parts showing the correct dollar amount.
- Once the parts have been received and inspected and the offsetting order has been received, the distributor account will be credited.

ALL CRITICAL DIMENSIONS ARE 100% INSPECTED FOR A CORRECT FIT



OEM AXLE CROSS REFERENCE

ALLIANCE AXLE, CHEVROLET, CLARK, DODGE



PLEASE CHECK AVAILABILITY pg 35

Model	Axle	Year	OEM Number	Pin Type	King Pin Dimensions	Steer King Spiral SKS	Steer King Bronze SKB
ALLIANCE AXLE							
	AF-6.0-2, AF-8.0-2		P6073300219KZ, P6073300319KZ	B	1.771 x 8.06	SKS8001	SKB8001
	AF-10.0-3, AF-12.0-3, AF-13.0-3, AF-13.3-3, AF-14.7-3		P6073300019KZ, P6073300119KZ	B	1.771 x 9.23	SKS12001	SKB12001
	AF-16.0-5, AF-18.0-3, AF-20.3-3		P6073300419KZ, P6073300519KZ	B	2.125 x 9.75	SKS16001	SKB16001
CHEVROLET							
¾ & 1 Ton P20, P30		1960-1964	3854744	A	1.109 x 6.34	SKS5107	SKB5107
		1964-1967	3858389, 3927942	A	1.109 x 6.34	SKS5107	SKB5107
	5000#	1986 to date	15522020, 15584763	A	1.179 x 6.35	SKS5607	SKB5607
C30HD - Heavy Duty Pickup			15665666, 88911968, 88911987	A	1.179 x 6.35	SKS5607	SKB5607
1 ½ Ton - C40, P40	5000# (F-050)	1964-1975	3858389, 3927942	A	1.109 x 6.34	SKS5107	SKB5107
	5000# (F-050)	1975-1990	722166	A	1.179 x 6.35	SKS5507	SKB5507
	7000# (F-070)	1963-1984	3927943, 8885857	A	1.249 x 7.87	SKS7007	SKB7007
1 ½ Ton & 2 Ton - C50, D50, L50, M50, N50, P50, S50, T50, C5D, Q50	5000# (F-050)	1963-1975	3829410, 3927942	A	1.109 x 6.34	SKS5107	SKB5107
	5000# (F-050)	1975-1990	722166	A	1.179 x 6.35	SKS5507	SKB5507
	7000# (F-070)	1965-1975	3838390, 3927943	A	1.249 x 7.87	SKS7007	SKB7007
	9000# (F-090)	1963-1972	2321013, 2431372, 8885021	E	1.434 x 8.75	SKS9507 ^E	SKB9507 ^E
	11000# (F-110)	1965-1970	2264897	E	1.609 x 9.75	SKS12507 ^E	SKB12507 ^E
	12000# (F-120)	1966-1973	2264897	E	1.609 x 9.75	SKS12507 ^E	SKB12507 ^E
	12000# (F-120D)	1975-1990	8885621	B	1.745 x 9.37	SKS12107	SKB12107
2 Ton - A60, B60, C60, D60, L60, M60, N60, P60, Q60, S60, T60, V60, X60, Y60	5000#	1963-1975	3858389, 3927942	A	1.109 x 6.34	SKS5107	SKB5107
	5000#	1975-1990	722166	A	1.179 x 6.35	SKS5507	SKB5507
	7000# (F-070), Some 6000#	1963+	3838390, 3927943	A	1.249 x 7.87	SKS7007	SKB7007
	9000# (F-090), Some 8100#	1965+	2321013, 2431372, 8885021	E	1.434 x 8.75	SKS9507 ^E	SKB9507 ^E
	11000# (F-110)	1965-1975	2264897	E	1.609 x 9.75	SKS12507 ^E	SKB12507 ^E
	12000# (F-120)	1966-1975	2264897	E	1.609 x 9.75	SKS12507 ^E	SKB12507 ^E
Top Kick - C-Series	12000# (F-120D)	1975-1990	8885621	B	1.745 x 9.37	SKS12107	SKB12107
	6000# (FN9)		88936084	A	1.234 x 6.78	SKS6018	SKB6018
	7000# (FM7)		88936119	B	1.499 x 7.15	SKS7018	SKB7018
	8000# (FM8)		88936011	B	1.499 x 7.50	SKS8018	SKB8018
	10000# (FM6)			B	1.794 x 10.40	SKS12018	SKB12018
	8100# (FL1)	1990 to date	12540328, 15619560	G	1.614 x 8.00	SKS8007 ^D	SKB8007 ^D
Top Kick - T - Series	9000#, 11000# (FL2), 12000# (FS7)	1990 to date	12540329, 15619561	G	1.889 x 9.20	SKS11007 ^D	SKB11007 ^D
	14000# (FHO), 14500# (FL3), 14600# (FSD)	1990 to date	12540330, 15619562	G	1.889 x 9.62	SKS12007 ^D	SKB12007 ^D
	EFA18F3 16000#		12541348, 3927942	A	1.872 x 9.96	SKS18005	SKB18005
2 ½ Ton - C70, C7D, H70, J70, R70, S70, S7T, T70, W70	7000# (F-070)	1963 to date	3838390, 3927943	A	1.249 x 7.87	SKS7007	SKB7007
	9000# (F-090)	1962 to date	2321013, 2431372, 8885021	E	1.434 x 8.75	SKS9507 ^E	SKB9507 ^E
	11000# (F-110)	1962-1975	2264897	E	1.609 x 9.75	SKS12507 ^E	SKB12507 ^E
	12000# (F-120)	1966-1975	2264897	E	1.609 x 9.75	SKS12507 ^E	SKB12507 ^E
	12000# (F-120D)	1975 to date	8885621	B	1.745 x 9.37	SKS12107	SKB12107
	FF-932 13200#		15510849	B	1.794 x 10.39	SKS93112	SKB93112
	FG-943 14600#			B	1.794 x 10.39	SKS0793118	SKB0793118
	18000# (FL-901)	1971 to date	2452865	B	1.999 x 10.90	SKS0890112	SKB0890112
2 ½ & 3 Ton - A80, C80, E80, H80, J80, L80, M80, N80, Q80	7000# (F-070)	1963 to date	3838390, 3927943	A	1.249 x 7.87	SKS7007	SKB7007
	9000# (F-090)	1962 to date	2321013, 2431372, 8885021	E	1.434 x 8.75	SKS9507 ^E	SKB9507 ^E
	11000# (F-110)	1962-1975	2264897	E	1.609 x 9.75	SKS12507 ^E	SKB12507 ^E
	12000# (F-120)	1966-1975	2264897	E	1.609 x 9.75	SKS12507 ^E	SKB12507 ^E
	12000# (F-120D)	1975 to date	8885621	B	1.745 x 9.37	SKS12107	SKB12107
	18000# (FL-901)	1971 to date	2452865	B	1.999 x 10.90	SKS0890112	SKB0890112
3 ½ Ton - D90, F90, H90, J90, M90, T90, W90	9000# (F-090)	1970 to date	2321013, 2431372, 8885021	E	1.434 x 8.75	SKS9507 ^E	SKB9507 ^E
	12000# (F-120)	1970-1975	2264897	E	1.609 x 9.75	SKS12507 ^E	SKB12507 ^E
	12000# (FE-900)	1970-1975	2264897	E	1.609 x 9.75	SKS12507 ^E	SKB12507 ^E
	12000# (F-120D)	1975 to date	8885621	B	1.745 x 9.37	SKS12107	SKB12107
	18000# (FL-901)	1970 to date	2452865	B	1.999 x 10.90	SKS0890112	SKB0890112
	16000# (FL-931)	1973-1978	2036352	B	1.999 x 11.21	SKS0893112	SKB0893112
CLARK (Industrial Axles)							
F-553 Air Start/ Gen. Carts				A	1.234 x 7.62	SKS9809	SKB9809
DODGE							
2 Ton - C500, D500, M500, R500, S500, PC500, PD500	7000#	1957-1973	1843208	B	1.234 x 7.43	SKS7004	SKB7004
2 ½ Ton - C600, D600, L600, S600, PC600, PD600, C700, CT700, D700, L700, S700	7000#	1957-1973	1843208	B	1.234 x 7.43	SKS7004	SKB7004
	7000#	1960-1973	1843208	B	1.234 x 7.43	SKS7004	SKB7004
	9000#	1960-1973	1818726	B	1.433 x 8.50	SKS0490118	SKB0490118
	11000#	1960-1968	1643174	E	1.609 x 9.75	SKS12507 ^E	SKB12507 ^E
	12000#	1969-1971	2808618	B	1.794 x 9.12	SKS90112	SKB90112

A - King pin has additional lock flats for use in multiple axles. B - King pin engineered to be longer than OEM pin.
 C - Torque spec for king pin nut 230 ft./lbs. D - Torque spec for king pin nut ls 406 ft./lbs. E - torque spec for king pin nut ls 350/475 ft./lbs.
 F - Torque spec for knuckle attachment bolts is 170-200 ft./lbs.

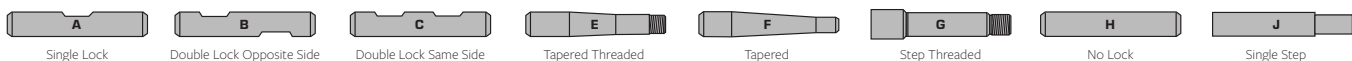
For T-Handle Wrenches, Bronze Bushing Drivers, and Lip Seal Install Tools - See pg 35



OEM AXLE CROSS REFERENCE
DODGE, EAGLE, EATON, FORD

PLEASE CHECK AVAILABILITY pg 35

Model	Axle	Year	OEM Number	Pin Type	King Pin Dimensions	Steer King Spiral SKS	Steer King Bronze SKB	
DODGE								
3 Ton - C800, CN800, CNT800, D800, NCT800, C850	7000#	1960-1973	1843208	B	1.234 x 7.43	SKS7004	SKB7004	
	9000#	1960 to date	1818726	B	1.433 x 8.50	SKS0490118	SKB0490118	
	11000#	1960-1968	1643174	E	1.609 x 9.75	SKS12507 ^E	SKB12507 ^E	
	12000#	1969-1977	2808618	B	1.794 x 9.12	SKS90112	SKB90112	
4 Ton - C900, CN900, CT900, CNT900, NC900, NCT900, VL900, VLT900	7000#	1960-1973	1843208	B	1.234 x 7.43	SKS7004	SKB7004	
	9000#	1960 to date	1818726	B	1.433 x 8.50	SKS0490118	SKB0490118	
	11000#	1960-1968	1643174	E	1.609 x 9.75	SKS12507 ^E	SKB12507 ^E	
	12000#	1969-1973	2808618	B	1.794 x 9.12	SKS90112	SKB90112	
	16000#	1974 to date		B	1.999 x 11.04	SKS0890112	SKB0890112	
5 Ton - C1000, CT1000, DN1000, DNT1000, LN1000, LNT1000	7000#	1970-1973	1843208	B	1.234 x 7.43	SKS7004	SKB7004	
	9000#	1960 to date	1818726	B	1.433 x 8.50	SKS0490118	SKB0490118	
	11000#	1960-1968	1643174	E	1.609 x 9.75	SKS12507 ^E	SKB12507 ^E	
	12000#	1969-1973	2808618	B	1.794 x 9.12	SKS90112	SKB90112	
	16000#	1974 to date		B	1.999 x 11.04	SKS0890112	SKB0890112	
EAGLE								
05	12000#		123	E	1.609 x 9.75	SKS12507E	SKB12507E	
EATON (See Spicer / Dana / Eaton)								
FORD								
E100, E250, E350		1975 to date	D5UZ-3111B, D5UZ-3111D, E0TZ-3111A	A	1.054 x 6.68	SKS0535006	SKB0535006	
½ Ton (Twin-I-Beam)	2600# Manual Brakes	1975 to date	D5TZ-3111B	A	1.054 x 6.68	SKS0535006	SKB0535006	
¾ Ton (Twin-I-Beam) F250 Conventional 2 wheel drive		1980-1986	E0TZ-3111A	A	1.054 x 6.68	SKS0535006	SKB0535006	
1 Ton (Twin-I-Beam) F350 Conventional 2 wheel drive		1980-1986	E0TZ-3111A	A	1.054 x 6.68	SKS0535006	SKB0535006	
F450 Super Duty		1988-1998	E8TZ-3111A	A	1.300 x 7.26	SKS7106	SKB7106	
1 ½ Ton B500, F500, LN500, N500, C500, P500	4700# - 5000#	1963 to date	C3TZ-3111A, D2TZ-3111D	A	1.231 x 7.54	SKS5006	SKB5006	
1 ½ Ton C500, P500 C550, P600	4700# - 5000#	1978-1979	C3TZ-3111A	A	1.231 x 7.54	SKS5006	SKB5006	
	6000#	1970-1973	C7TZ-3111A	A	1.230 x 8.90	SKS7006	SKB7006	
	7000#	1961-1969	B7TZ-3111B, C2TZ-3111B	B	1.234 x 7.43	SKS7004	SKB7004	
	7000#	1970-1988	C7TZ-3111A	A	1.230 x 8.90	SKS7006	SKB7006	
2 Ton - B600, C600, F600, LN600, N600	5000# - 5500#	1963 to date	C3TZ-3111A, D2TZ-3111D	A	1.231 x 7.85	SKS5006	SKB5006	
	6000#	1967-1988	C7TZ-3111A	A	1.230 x 8.90	SKS7006	SKB7006	
	6000# - 7000#	1967-1974	C7TZ-3111A	A	1.230 x 8.90	SKS7006	SKB7006	
	7000#	1961-1966	B7TZ-3111B, C2TZ-3111B	B	1.234 x 7.43	SKS7004	SKB7004	
	7000# Hydraulic Brakes	1967-1988	C7TZ-3111A	A	1.230 x 8.90	SKS7006	SKB7006	
	7000 - 9000# Air Brakes	1975-1988	D6TZ-3111A	B	1.430 x 8.25	SKS7506	SKB7506	
	7000 - 9000# Air Brakes	1989-2003	E9HZ-3111C	B	1.430 x 8.25	SKS7606	SKB7606	
	14600#	1995-1998	F5HZ-3111A	B	1.810 x 10.54	SKS14606	SKB14606	
	5000 - 5500#	1963 to date	C3TZ-3111A, D2TZ-3111D	A	1.231 x 7.85	SKS5006	SKB5006	
2 ½ Ton - B700, C700, F700, LN700, N700, T700, B750, C750, F750, LN750, N750, T750	6000#	1967-1988	C7TZ-3111A	A	1.230 x 8.90	SKS7006	SKB7006	
	6000# - 7000#	1990 to date	E8HZ-3111A, F1HZ-3111A	B	1.300 x 7.75	SKS7206	SKB7206	
	7000#	1957-1966	C7TZ-3111A	A	1.230 x 8.90	SKS7006	SKB7006	
	7000#		C2TZ-3111B	B	1.234 x 7.43	SKS7004	SKB7004	
	7000# Hydraulic Brakes	1967-1988	C7TZ-3111A	A	1.230 x 8.90	SKS7006	SKB7006	
	7000# Air Brakes	1989-2003	E9HZ-3111C	B	1.430 x 8.25	SKS7606	SKB7606	
	7000-9000# Air Brakes After Series No. 40001	1975-1988	D6TZ-3111A	B	1.430 x 8.25	SKS7506	SKB7506	
	9000# Hydraulic Brakes	1960-1983	D1HZ-3111A, C2TZ-3111G	B	1.433 x 8.50	SKS0490118	SKB0490118	
	9000# Air Brakes	1975-1988	D6HZ-3111B, D6HZ-3111D	B	1.606 x 9.07	SKS9506	SKB9506	
	9000# Air Brakes	1989 to date	E9HZ-3111B	B	1.606 x 9.07	SKS9606	SKB9606	
	C.P.S. 11000#	1960-1973	D0HZ-3111C	B	1.606 x 8.81	SKS97018	SKB97018	
	C.P.S. 12000#	1960-1973	D0HZ-3111C	B	1.606 x 8.81	SKS97018	SKB97018	
	12000# Conventional	1960-1969	C3TZ-3111B, D1HZ-3111B	B	1.794 x 9.12	SKS90112	SKB90112	
	14600#	1995-1998	F5HZ-3111A	B	1.810 x 10.54	SKS14606	SKB14606	
	6000#	1970-1988	C7TZ-3111A	A	1.230 x 8.90	SKS7006	SKB7006	
	800-850-880 Series	7000#	1957-1969	B7TZ-3111B, C2TZ-3111B	B	1.234 x 7.43	SKS7004	SKB7004
		7000# Hydraulic Brakes	1970-1988	C7TZ-3111A	A	1.230 x 8.90	SKS7006	SKB7006
7000 - 9000# Air Brakes After Series No. 40, 001		1975-1988	D6TZ-3111A	B	1.430 x 8.25	SKS7506	SKB7506	
7000# Air Brakes		1989 to date	E9HZ-3111C	B	1.430 x 8.25	SKS7606	SKB7606	
9000# Hydraulic Brakes		1957-1983	D1HZ-3111A, C2TZ-3111G	B	1.433 x 8.50	SKS0490118	SKB0490118	
9000# Air Brakes		1975-1988	D6HZ-3111B, D6HZ-3111D	B	1.606 x 9.07	SKS9506	SKB9506	
9000# Air Brakes		1989 to date	E9HZ-3111B	B	1.606 x 9.07	SKS9606	SKB9606	
11000# Conventional		1957-1963	B7TZ-3111C	E	1.609 x 9.75	SKS12507 ^E	SKB12507 ^E	



OEM AXLE CROSS REFERENCE

FORD, FREIGHTLINER, FWD, GMC



PLEASE CHECK AVAILABILITY pg 35

Model	Axle	Year	OEM Number	Pin Type	King Pin Dimensions	Steer King Spiral SKS	Steer King Bronze SKB
FORD							
800-850-880 Series	C.P.S. 11000#	1964-1970	D0HZ-3111C	B	1.606 x 8.81	SKS97018	SKB97018
	12000# Conventional	1960-1988	C3TZ-3111B, D1HZ-3111B	B	1.794 x 9 .12	SKS90112	SKB90112
	C.P.S. 12000# Hydraulic Brakes	1960-1970	D0HZ-3111C	B	1.606 x 8.81	SKS97018	SKB97018
	12000# Conventional	1975-1988	D6HZ-3111A	B	1.794 x 10.07	SKS94106	SKB94106
	12000# Conventional	1989 to date		B	1.794 x 10.07	SKS94206	SKS94206
	14600#	1995-1998	F5HZ-3111A	B	1.810 x 10.54	SKS14606	SKB14606
	16000# Air Brakes	1970-1974	D0HZ-3111E	B	1.999 x 11.04	SKS0890112	SKB0890112
	16000# Air Brakes	1975 to date	D5HZ-3111C	B	1.999 x 11.21	SKS0893106	SKB0893106
	18000# Hydraulic Brakes	1960-1974	D0HZ-3111E	B	1.999 x 11.04	SKS0890112	SKB0890112
	18000# Air Brakes	1975 to date	D5HZ-3111C	B	1.999 x 11.21	SKS0893106	SKB0893106
	20000#	1970-1974	D0HZ-3111E	B	1.999 x 11.04	SKS0890112	SKB0890112
	20000#	1975 to date	D5HZ-3111C	B	1.999 x 11.21	SKS0893106	SKB0893106
900-950 Series	7000#	1960-1969	B7TZ-3111B, C2TZ-3111B	B	1.234 x 7.43	SKS7004	SKB7004
	7000# Hydraulic Brakes	1970-1988	C7TZ-3111A	A	1.230 x 8.90	SKS7006	SKB7006
	7000#, 9000-10000# After Series No. 40, 001	1975-1988	D6TZ-3111A	B	1.430 x 8.25	SKS7506	SKB7506
	7000# Air Brakes	1989 to date	E9HZ-3111C	B	1.430 x 8.25	SKS7606	SKB7606
	9000# Hydraulic Brakes	1957-1983	D1HZ-3111A, C2TZ-3111G	B	1.433 x 8.50	SKS0490118	SKB0490118
	9000# Air Brakes	1975-1988	D6HZ-3111B, D6HZ-3111D	B	1.606 x 9.07	SKS9506	SKB9506
	9000# Air Brakes	1989 to date	E9HZ-3111B	B	1.606 x 9.07	SKS9606	SKB9606
	11000# Conventional	1957-1963	B7TZ-3111C	E	1.609 x 9.75	SKS12507 ^E	SKB12507 ^E
	C.P.S. 11000#	1964-1970	D0HZ-3111C	B	1.606 x 8.81	SKS97018	SKB97018
	12000# Conventional Hydraulic Brakes	1960-1988	C3TZ-3111B, D1HZ-3111B	B	1.794 x 9 .12	SKS90112	SKB90112
	C.P.S. 12000#	1960-1973	D0HZ-3111C	B	1.606 x 8.81	SKS97018	SKB97018
	12000# Conventional	1975-1988	D6HZ-3111A	B	1.794 x 10.07	SKS941065	SKB94106
	12000# Conventional	1989 to date	E9HZ-3111A, F0HZ-3111A	B	1.794 x 10.07	SKS94206	SKS94206
	12000# ALUMINUM	1978-1988	D8HZ-3111A	B	1.794 x 10.07	SKS9410601	SKB9410601
	12000# ALUMINUM	1989-	F6HZ-3111BB	B	1.794 x 10.07	SKS9420601	SKB9420601
	14600#	1995-1998	F5HZ-3111A	B	1.810 x 10.54	SKS14606	SKB14606
	16000# Air Brakes	1970-1974	D0HZ-3111E	B	1.999 x 11.04	SKS0890112	SKB0890112
	16000# Air Brakes	1975 to date	D5HZ-3111C	B	1.999 x 11.21	SKS0893106	SKB0893106
	18000# Hydraulic Brakes	1960-1974	D0HZ-3111E	B	1.999 x 11.04	SKS0890112	SKB0890112
	18000# Air Brakes	1975 to date	D5HZ-3111C	B	1.999 x 11.21	SKS0893106	SKB0893106
20000#	1970-1974	D0HZ-3111E	B	1.999 x 11.04	SKS0890112	SKB0890112	
20000#	1975 to date	D5HZ-3111C	B	1.999 x 11.21	SKS0893106	SKB0893106	
FREIGHTLINER (See Rockwell / Meritor, Spicer / Dana / Eaton)							
FWD (See Rockwell / Meritor, Spicer / Dana / Eaton)							
GMC							
P1500		1960-1965	3927942	A	1.109 x 6.34	SKS5107	SKB5107
G1500		1966-1967	3854744	A	1.109 x 6.34	SKS5107	SKB5107
P2500		1960-1965	3927942	A	1.109 x 6.34	SKS5107	SKB5107
		1966-1967	3854744	A	1.109 x 6.34	SKS5107	SKB5107
C3500 - Heavy Duty Pickup		1991+	15665666	A	1.179 x 6.35	SKS5607	SKB5607
3500 Series - Conventional	5000# (F-050)	1963-1966	3927942	A	1.109 x 6.34	SKS5107	SKB5107
	5000# (F-050)	1965-1967	3854744	A	1.109 x 6.34	SKS5107	SKB5107
P3500	5000#	1986 to date	15522020, 88911968 88911987	A	1.179 x 6.35	SKS5607	SKB5607
	5000# (F-050, F-055)	1963-1966	3927942	A	1.109 x 6.34	SKS5107	SKB5107
4000 Series	7000# (F-070)	1963-1966	3838390, 3927943	A	1.249 x 7.87	SKS7007	SKB7007
4500 Series	5000# (F-055)	1967-1970	3927942	A	1.109 x 6.34	SKS5107	SKB5107
5000 Series - B5000, DW5000, W5000	5000# (F-050)	1967-1972	3854744	A	1.109 x 6.34	SKS5107	SKB5107
All other 5000 Series	5000# (F-050, F-055)	1967-1970	3927942	A	1.109 x 6.34	SKS5107	SKB5107
	7000# (F-070)	1963-1966	3838390, 3927943	A	1.249 x 7.87	SKS7007	SKB7007
	5000# (F-050)	1966-1970	3927942	A	1.109 x 6.34	SKS5107	SKB5107
	5000# (F-050)	1966-1972	3854744	A	1.109 x 6.34	SKS5107	SKB5107
	5000# (F-055)	1975-1990	722166	A	1.179 x 6.35	SKS5507	SKB5507
	7000# (F-070)	1963 to date	3838390, 3927943	A	1.249 x 7.87	SKS7007	SKB7007
KODIAK - C Series	9000# (F-090)	1970 to date	2321013, 8885021	E	1.434 x 8.75	SKS9507 ^E	SKB9507 ^E
	7000# (FM7)		88936119	B	1.499 x 7.15	SKS7018	SKB7018
	8000# (FM8)		88936011	B	1.499 x 7.50	SKS8018	SKB8018
	10000# (FM6)			B	1.794 x 10.40	SKS12018	SKB12018
	8100# (FL1)		12540328, 1561960	G	1.614 x 8.00	SKS8007 ^D	SKB8007 ^D
	9000# 11000# (FL2), 12000# (FS7)		12540329, 1561961	G	1.889 x 9.20	SKS11007 ^D	SKB11007 ^D
	14000# (FH0), 14500# (FL3), 14600# (FSD)	1990 to date	12540330, 1561962	G	1.889 x 9.62	SKS12007 ^D	SKB12007 ^D
	16000# (FH4)		88936136	B	1.999 x 11.21	SKS18118	SKB18118
EFA18F3 16000#		12541348	A	1.872 x 9.96	SKS18005	SKB18005	

A - King pin has additional lock flats for use in multiple axles. B - King pin engineered to be longer than OEM pin.

C - Torque spec for king pin nut 230 ft./lbs. D - Torque spec for king pin nut ls 406 ft./lbs. E - torque spec for king pin nut ls 350/475 ft./lbs.

F - Torque spec for knuckle attachment bolts is 170-200 ft./lbs.

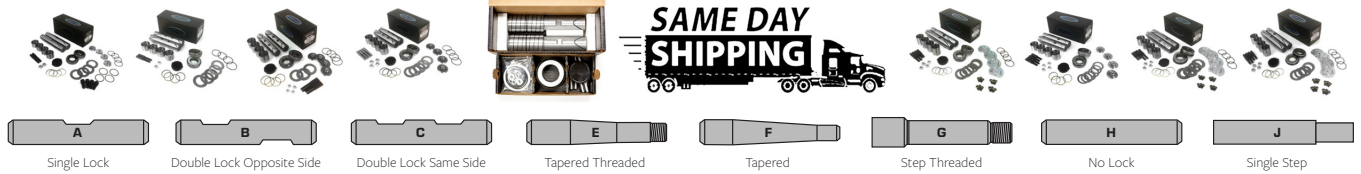
For T-Handle Wrenches, Bronze Bushing Drivers, and Lip Seal Install Tools - See pg 35



OEM AXLE CROSS REFERENCE
 GMC, HENDRICKSON, HINO, IMT/INGERSOLL,
 INTERNATIONAL/NAVISTAR

PLEASE CHECK AVAILABILITY pg 35

Model	Axle	Year	OEM Number	Pin Type	King Pin Dimensions	Steer King Spiral SKS	Steer King Bronze SKB
GMC							
6000 Series	5000# (F-050, F-055)	1973-1975	3927942	A	1.109 x 6.34	SKS5107	SKB5107
	5000# (F-050, F-055)	1975-1990	722166	A	1.179 x 6.36	SKS5507	SKB5507
	7000# (F-070)	1973 to date	3838390, 3927943	A	1.249 x 7.87	SKS7007	SKB7007
	9000# (F-090)	1960 to date	2321013, 8885021	E	1.434 x 8.75	SKS9507 ^E	SKB9507 ^E
	11000# (F-110), 12000# (F-120)	1960 to date	2264897	E	1.609 x 9.75	SKS12507 ^E	SKB12507 ^E
6500 Series	7000# (F-070)	1963 to date	3838390, 3927943	A	1.249 x 7.87	SKS7007	SKB7007
	9000# (F-090)	1960 to date	2321013, 8885021	E	1.434 x 8.75	SKS9507 ^E	SKB9507 ^E
	11000# (F-110)	1960-1975	2264897	E	1.609 x 9.75	SKS12507 ^E	SKB12507 ^E
	12000# (F-120)	1963-1975	2264897	E	1.609 x 9.75	SKS12507 ^E	SKB12507 ^E
	12000# (F-120D)	1975 to date	8885621	B	1.745 x 9.37	SKS12107	SKB12107
7000 Series	9000# (F-090)	1960-1966	2321013, 8885021	E	1.434 x 8.75	SKS9507 ^E	SKB9507 ^E
	11000# (F-110)	1960-1966	2264897	E	1.609 x 9.75	SKS12507 ^E	SKB12507 ^E
7500 Series	7000# (F-070)	1966 to date	3838390, 3927943	A	1.249 x 7.87	SKS7007	SKB7007
	9000# (F-090)	1966 to date	2321013, 8885021	E	1.434 x 8.75	SKS9507 ^E	SKB9507 ^E
	11000# (F-110)	1963-1975	2264897	E	1.609 x 9.75	SKS12507 ^E	SKB12507 ^E
	12000# (F-120)	1963-1975	2264897	E	1.609 x 9.75	SKS12507 ^E	SKB12507 ^E
	12000# (F-120D)	1975 to date	8885621	B	1.745 x 9.37	SKS12107	SKB12107
8500 Series	7000# (F-070)	1966 to date	3838390, 3927943	A	1.249 x 7.87	SKS7007	SKB7007
	9000# (F-090)	1963 to date	2321013, 8885021	E	1.434 x 8.75	SKS9507 ^E	SKB9507 ^E
	11000# (F-110)	1963-1972	2264897	E	1.609 x 9.75	SKS12507 ^E	SKB12507 ^E
	12000# (F-120)	1963-1975	2264897	E	1.609 x 9.75	SKS12507 ^E	SKB12507 ^E
	12000# (F-120D)	1975 to date	8885621	B	1.745 x 9.38	SKS12107	SKB12107
9000 Series	18000# (FL-901)	1971 to date	2452865	B	1.999 x 11.04	SKS089012	SKB089012
	18000# (FL-901)	1970 to date	2452865	B	1.999 x 11.04	SKS089012	SKB089012
9500 Series	7000# (F-070)	1966 to date	3838390, 3927943	A	1.249 x 7.87	SKS7007	SKB7007
	9000# (F-090)	1966 to date	2321013, 8885021	E	1.434 x 8.75	SKS9507 ^E	SKB9507 ^E
	11000# (F-110)	1963-1975	2264897	E	1.609 x 9.75	SKS12507 ^E	SKB12507 ^E
	11000# (FE-970)	1966-1972	2442145	B	1.606 x 8.81	SKS97018	SKB97018
	12000# (F-120)	1963-1975	2264897	E	1.609 x 9.75	SKS12507 ^E	SKB12507 ^E
	12000# (FE-900)	1966-1972	2264897	E	1.609 x 9.75	SKS12507 ^E	SKB12507 ^E
	12000# (F-120D)	1975 to date	8885621	B	1.745 x 9.37	SKS12107	SKB12107
	18000# (FL-901)	1966 to date	2452865	B	1.999 x 11.04	SKS089012	SKB089012
	18000# (FL-931)		2036352	B	1.999 x 11.21	SKS089312	SKB089312
	HENDRICKSON						
FRONT STEER AXLE	Airtek, Softek, Steertek 64905-004		60961-009, 60961-039, 60961-040, 00063311 LT SIDE, 00063312 RT SIDE, 00063313 BT SIDES.			SKS12108	SKB12108
REAR TAG AXLES	UST		2916	A	1.810 x 10.56	SKS12623	SKB12623
	UC2, UC3, UC4 US2, US3, US4		003270, 003200	H	1.810 x 9.54	SKS12008 ^F	SKB12008 ^F
	USP		1434	A	1.810 x 10.56	SKS12723	SKB12723
			6648	A	1.810 x 9.54	SKS13108	SKB13108
HINO							
NA, NB, NC		2005-2008	R201478	A	1.234 x 6.78	SKS6018	SKB6018
ND, NE, NJ-258 A-LP	8,000#	2005-2008	R201474	B	1.499 x 7.50	SKS8018	SKB8018
ND, NE, NJ, NV	10,000#	2005-2008	R201470	B	1.794 x 10.40	SKS96112	SKB96112
IMT / INGERSOLL							
	700214		700040	B	2.248 x 11.30	SKS70020	SKB70020
INTERNATIONAL / NAVISTAR							
	7500# FA-65	1957-1966	61556R91	A	1.234 x 7.65	SKS9809	SKB9809
	8200# FA-71	1975-1988	473695C91	A	1.359 x 7.96	SKS10109	SKB10109
	8200# FA-73	1975-1988	473695C91	A	1.359 x 7.96	SKS10109	SKB10109
	8200# FA-74	1975-1988	473695C91	A	1.359 x 7.96	SKS10109	SKB10109
	7500# FA-80	1950-1968	61556R91	A	1.234 x 7.65	SKS9809	SKB9809
	7500# FA-91	1960-1968	61556R91	A	1.234 x 7.65	SKS9809	SKB9809
	7500# FA-98	1950-1975	61556R91	A	1.234 x 7.65	SKS9809	SKB9809
	7500# FA-99	1957-1975	61556R91	A	1.234 x 7.65	SKS9809	SKB9809
	9000# FA-100	1950-1968	303136C92	B	1.433 x 8.50	SKS0490118	SKB0490118
	7500# FA-101	1962-1975	61556R91	A	1.234 x 7.65	SKS9809	SKB9809
	8200# FA-101, FA-104	1975-1988	473695C91, 1648204C91	A	1.359 x 7.96	SKS10109	SKB10109
	8200# FA-101, FA-104	1989 to date	1660271C92	B	1.359 x 7.96	SKS10209	SKB10209
	9000# FA-102	1963-1968	303136C92	B	1.433 x 8.50	SKS0490118	SKB0490118
	7500# FA-103		473695C91	A	1.359 x 7.96	SKS10109	SKB10109
	9000# FA-105	1955-1975	303136C92	B	1.433 x 8.50	SKS0490118	SKB0490118
	9000# FA-109	1970-1981	408547C91, 408547C93, 472093C91	B	1.484 x 8.85	SKS10909	SKB10909
	9000# FA-109	1981 to date	493092C91, 493095C92	A	1.484 x 8.85	SKS10809	SKB10809





Model	Axle	Year	OEM Number	Pin Type	King Pin Dimensions	Steer King Spiral SKS	Steer King Bronze SKB
INTERNATIONAL / NAVISTAR							
	12000# FA-110	1950-1968	155932R92, 303137C92 69576R92	E	1.609 x 9.75	SKS12507 ^E	SKB12507 ^E
	12000# FA-112	1960-1975	229265R91, 303138C92	B	1.606 x 8.81	SKS97018	SKB97018
	12000# FA-113	1960-1975	229265R91, 303138C92	B	1.606 x 8.81	SKS97018	SKB97018
	12000# FA-115	1955-1968	155932R92, 303137C92, 69576R92	E	1.609 x 9.75	SKS12507 ^E	SKB12507 ^E
	12000# FA-118	1981 to date	399942C93, 588808C91, 1658934C91	B	1.609 x 9.65	SKS14009	SKB14009
	12000# FA-127	1981 to date	588808C91, 1658934C91, 399942C93	B	1.609 x 9.65	SKS14009	SKB14009
	18000# FA-136	1963-1975	303140C92	B	1.999 x 11.04	SKS0890112	SKB0890112
	12000# FA-139	1975-1981	472094C91, 491611C93, 493094C93	A	1.609 x 9.65	SKS13909	SKB13909
	12000# FA-139	1981 to date	588808C91, 1658934C91, 399942C93	B	1.609 x 9.65	SKS14009	SKB14009
	12000# FA-201	1960-1972	303139C92, 870148R92	B	1.794 x 9.12	SKS90112	SKB90112
	9000# FA-208	1960-1975	303136C92	B	1.433 x 8.50	SKS0490118	SKB0490118
	9000# FA-209	1960-1975	303136C92	B	1.433 x 8.50	SKS0490118	SKB0490118
	12000# FA-211	1960-1973	303139C92, 870148R92	B	1.794 x 9.12	SKS90112	SKB90112
	12000# FA-212	1960-1973	303139C92, 870148R92	B	1.794 x 9.12	SKS90112	SKB90112
	12000# FA-215 FA-216, FA-217	1960-1973	303139C92, 870148R92	B	1.794 x 9.12	SKS90112	SKB90112
	12000# FA-218	1960-1973	303139C92, 870148R92	B	1.794 x 9.12	SKS90112	SKB90112
	12000# FA-219	1963-1973	303139C92, 870148R92	B	1.794 x 9.12	SKS90112	SKB90112
	12000# FA-228	1973 to date	452344C91	B	1.794 x 10.39	SKS92112	SKB92112
	16000# FA-231		474520C91	B	1.999 x 11.21	SKS0893112	SKB0893112
	18000# FA-232		474520C91	B	1.999 x 11.21	SKS0893112	SKB0893112
	9000# FA-309	1975-1981	470752C91, 493095C91	A	1.609 x 9.15	SKS30909	SKB30909
	9000# FA-309	1981 to date	586806C91	B	1.609 x 9.15	SKS31009	SKB31009
	10800# FA-329	1975-1981	472094C91, 491611C92, 493094C92, 493094C93	A	1.609 x 9.65	SKS13909	SKB13909
	12000# FA-329	1981 to date	588808C91, 1658934C91, 399942C93, 1655421C91	B	1.609 x 9.65	SKS14009	SKB14009
	12000# FA-339	1975-1981	472094C91, 491611C92, 493094C92, 493094C93	A	1.609 x 9.65	SKS13909	SKB13909
	12000# FA-339 FA-337, FA-343	1981 to date	588808C91, 1658934C91, 399942C93	B	1.609 x 9.65	SKS14009	SKB14009
	10800# FA-341 Aluminum Axle		472094C91, 491611C92, 493094C92, 493094C93	A	1.609 x 9.65	SKS13909	SKB13909
	12000# FA-342, FA-343	1981 to date	588808C91, 1658934C91, 399942C93, 493094C93	B	1.609 x 9.65	SKS14009	SKB14009
	5000# I-050		473695C91	A	1.359 x 7.96	SKS10109	SKB10109
	6000# I-060		473695C91	A	1.359 x 7.96	SKS10109	SKB10109
	7500# I-075		473695C91	A	1.359 x 7.96	SKS10109	SKB10109
	8000# I-80S, I-80SG, 02-ADB, 02-ADV		1660271C92	B	1.359 x 7.96	SKS10209	SKB10209
	8000# 02-AEM, 02-AHA		3573204C91	C	1.359 x 7.97	SKS10319	SKB10319
	9000# I-090	Pre Aug 1981	470752C91, 493095C91	A	1.609 x 9.15	SKS30909	SKB30909
	9000# I-090	Post Aug 1981	586806C91	B	1.609 x 9.15	SKS31009	SKB31009
	10000# I-100S I-100SG, 02-ADC		1688411C92	B	1.921 x 9.87	SKS12009 ^B	SKB12009 ^B
	10000# I-100W 02-AER		329022	B	2.046 x 10.12	SKS14119 ^B	SKB14119 ^B
	10800# I-108 All except code 02309		588808C91, 399942C93	B	1.609 x 9.65	SKS14009	SKB14009
	10800# I-108 For code 02309		586806C91	B	1.609 x 9.15	SKS31009	SKB31009
	12000# I-120 All except code 02309		588808C91, 399942C93	B	1.609 x 9.65	SKS14009	SKB14009
	12000# I-120 For code 02309		586806C91	B	1.609 x 9.15	SKS31009	SKB31009
	12000# I-120S, I-120SG, 02-ADD, 02-ADG, 02-ADP	1989 to date	1668411C91, 1659688C91, 1659686C91, 1659687C91	B	1.921 x 9.87	SKS12009 ^B	SKB12009 ^B
	13200# I-132, I-132S		586806C91	B	1.609 x 9.65	SKS14009	SKB14009
	14000# I-140S, 02-ADE	1990 to date	1668412C91	B	2.046 x 10.12	SKS14119 ^B	SKB14119 ^B
Rockwell Axles	12000# FE-900	1950-1962	303137C92, 69576R92, 155932R92	E	1.609 x 9.75	SKS12507 ^E	SKB12507 ^E
	12000# FE-970	1964-1968	229265R91, 303138C92	B	1.606 x 8.81	SKS97018	SKB97018
	12000# FF-921	1972 to date	452344C91	B	1.794 x 10.39	SKS92112	SKB92112
	18000# FL-901		303140C92, 870148R92	B	1.999 x 11.04	SKS0890112	SKB0890112
	12000# FE-971		577684C91	B	1.607 x 9.37	SKS97118	SKB97118
	12000# FF-931, FF-941		549800C91	B	1.794 x 10.40	SKS93112	SKB93112
	12000# FF-961 02-ARV, 02-ARA, 02-ARW		2505492C91	B	1.794 x 10.40	SKS96112	SKB96112
	12000# 02-AED, 02-AEG			A	1.794 x 9.05	SKS12205	SKB12205
	18000# FL-931, FL-941		474520C91	B	1.999 x 11.21	SKS0893112	SKB0893112
	18000# 02-ARU		2505495C91	B	1.999 x 11.21	SKS18018	SKB18018
	12000# FF-981 02-ARK, 02-ARL, 02-ASB, 02-ASD		2500542C91	B	1.794 x 8.87	SKS98118	SKB98118

A - King pin has additional lock flats for use in multiple axles. B - King pin engineered to be longer than OEM pin.
C - Torque spec for king pin nut 230 ft./lbs. D - Torque spec for king pin nut Is 406 ft./lbs. E - torque spec for king pin nut Is 350/475 ft./lbs.
F - Torque spec for knuckle attachment bolts is 170-200 ft./lbs.

For T-Handle Wrenches, Bronze Bushing Drivers, and Lip Seal Install Tools - See pg 35

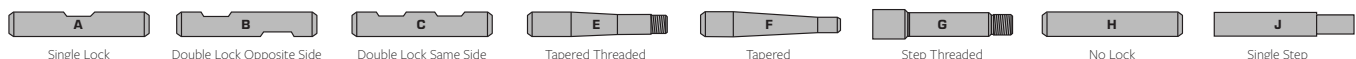


OEM AXLE CROSS REFERENCE

ISUZU, KENWORTH, KGI, KIMBLE MIXER, LINK, MACK, MAN, MCI, MCNELIUS MTM, MITSUBISHI, NEW FLYER, PETERBILT, RIDEWELL, ROCKWELL / MERITOR

PLEASE CHECK AVAILABILITY pg 35

Model	Axle	Year	OEM Number	Pin Type	King Pin Dimensions	Steer King Spiral SKS	Steer King Bronze SKB
ISUZU							
FTR			12540329	G	1.889 x 9.20	SKS11007 ^D	SKB11007 ^D
NPR		1990-1998	5-87830978-2, 94058104	A	1.181 x 7.38	SKS6826	SKB6826
		1998 to date	5-87831608-1, 97723802, 98441181, 5-87832211-1	A	1.181 x 7.38	SKS6926	SKB6926
KENWORTH (See Rockwell / Meritor, Spicer / Dana / Eaton)							
KGI							
	15000# KGS150		579-1044	A	1.999 x 11.32	SKS1501107	SKB1501107
	23000# KGS230		KA531	A	2.249 x 10.60	SKS2301107	SKB2301107
KIMBLE MIXER							
			T41-12001-71	C	1.872 x 9.05	SKS14905	SKB14905
LINK							
	12000# DuraLift & Model 9000		84001930	A	1.794 x 9.05	SKS12311	SKB12311
	13200# DuraLift & Model 9000		84001931	A	1.794 x 9.05	SKS13211	SKB13211
MACK							
Midliner MS-CS	7500#, 9500#		50.00336305	A	1.377 x 7.00	SKS7513	SKB7513
DM, RM, DUMP, MIXER, CONSTRUCTION, REFUSE	10000# FA-507, FA-5071		301SQ46A	F	1.500 x 7.40	SKS53513	SKB53513
	10000# FA-512		301SQ46A	F	1.500 x 7.40	SKS53513	SKB53513
	10000# FA-514, FA-5141		301SQ46A	F	1.500 x 7.40	SKS53513	SKB53513
	10000# FA-517		301SQ46A	F	1.500 x 7.40	SKS53513	SKB53513
	12000# FA-522, FA-5221	1963 to date	301SQ47CPI, 301SQ47D	F	1.625 x 7.46	SKS53313	SKB53313
	12000# FA-523, FA-5231	1963 to date	301SQ47CPI, 301SQ47D, 301SQ47E	F	1.625 x 7.46	SKS53313	SKB53313
	12000# FA-532, FA-538	1950 to date	301SQ47CPI, 301SQ47D, 301SQ47E	F	1.625 x 7.46	SKS53313	SKB53313
	10000# FA-535		301SQ46A	F	1.500 x 7.40	SKS53513	SKB53513
	12000# FXL12		301SQ53	E	2.360 x 8.92	SKS53613	SKB53613
	14600# FXL14.6		301SQ53	E	2.360 x 8.92	SKS53613	SKB53613
	18000# FA-602, FA-604		205SQ12	B	1.999 x 10.90	SKS0890112	SKB0890112
	18000# FA-616, FA-617		301SQ52	F	2.125 x 8.75	SKS61613	SKB61613
	18000# FXL18		301SQ53	E	2.360 x 8.92	SKS53613	SKB53613
	20000# FA-616, FA-617		301SQ52	F	2.125 x 8.75	SKS61613	SKB61613
	20000# FXL20		301SQ53	E	2.360 x 8.92	SKS53613	SKB53613
23000# FXL23		301SQ53	E	2.360 x 8.92	SKS53613	SKB53613	
24000# FA-616, FA-617		301SQ52	F	2.125 x 8.75	SKS61613	SKB61613	
With Rockwell Axles	12000# FE-900	1960-1966	205SQ11	E	1.609 x 9.75	SKS12507 ^E	SKB12507 ^E
	12000# FF-921	1972 to date	205SQ15	B	1.794 x 10.39	SKS92112	SKB92112
	18000# FL-901		205SQ12	B	1.999 x 11.04	SKS0890112	SKB0890112
MAN							
	V8 65C-02	1993	81.44205-6013, 6313078	J	1.969 x 8.77	SKS12014	SKB12014
MCI							
MC-7, MC-8, MC-9	12000#		121	E	1.794 x 10.68	SKS17007 ^E	SKB17007 ^E
	15000#, 16000#		2254366, IC-2-40	E	1.794 x 10.68	SKS17007 ^E	SKB17007 ^E
	13200# FF-941, FF-961			B	1.794 x 10.40	SKS96112	SKB96112
MC-12	14600# FG-931, FG-933, FG-941, FG-943, FG-952		IJ-2-54	B	1.794 x 10.40	SKS0793118	SKB0793118
102DL3	16000#, 20000# FH-946		01-01-1017, 01-01-1079	B	1.794 x 9.19	SKS0894618	SKB0894618
G COACH	16000# 1-160S			B	2.046 x 11.00	SKS16119	SKB16119
MCNELIUS MTM							
			188033	A	1.810 x 10.56	SKS12623	SKB12623
MITSUBISHI							
			MK703748	A	1.101 x 7.10	SKS6021	SKB6021
NEW FLYER							
	MAN		6313078	J	1.969 x 8.77	SKS12014	SKB12014
PETERBILT (See Rockwell / Meritor, Spicer / Dana / Eaton)							
RIDEWELL							
	RSS-232-8K		1660170	B	1.500 x 8.93	SKS94118	SKB94118
	RSS-232LM, MM, HM		1660106	B	1.794 x 10.40	SKS0793118	SKB0793118
			1667325B034	A	1.810 x 10.56	SKS12723	SKB12723
	RSS-232-20K		1660189	B	1.999 x 11.21	SKS0893112	SKB0893112
ROCKWELL / MERITOR (Non-Driving Front Steering Axles)							
	12000# 16612, 16613, 16616		123, 144, 152, 186	E	1.607 x 9.75	SKS12507 ^E	SKB12507 ^E
	12000# 16930, 16931		121	E	1.794 x 10.68	SKS17007 ^E	SKB17007 ^E
	14600# 17100, 17101, 17111, 17801		1309, 1310, 1319	B	1.794 x 10.40	SKS0793118	SKB0793118
	5000# FA941			A	1.179 x 6.36	SKS5607	SKB5607



OEM AXLE CROSS REFERENCE

ROCKWELL / MERITOR, SPICER / DANA / EATON



PLEASE CHECK AVAILABILITY pg 35

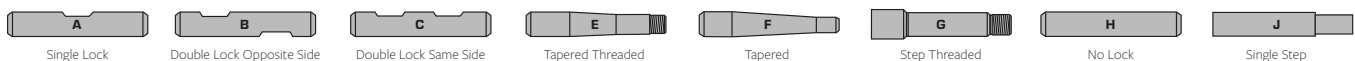
Model	Axle	Year	OEM Number	Pin Type	King Pin Dimensions	Steer King Spiral SKS	Steer King Bronze SKB
ROCKWELL / MERITOR (Non-Driving Front Steering Axles)							
	7000# FC-901 FC-902, FC-903		143, 155	B	1.234 x 7.43	SKS7004	SKB7004
	FC-921		1314, 1320	B	1.234 x 7.43	SKS7104	SKB7104
	8000# FC-941		1318	B	1.500 x 8.93	SKS94118	SKB94118
	9000# FD-900	1950-1955	136, 141	E	1.434 x 9.41	SKSD90018	SKBD90018
	9000# FD-901 FD-902, FD-903	1955 to date	138, 142, 154	B	1.434 x 8.50	SKS0490118	SKB0490118
	10000# FD-961, FD-965		1315, 1470, 1471	B	1.794 x 10.40	SKS96112	SKB96112
	11000# FE-900, FE-903, FE-910		123, 144	E	1.607 x 9.75	SKS12507 ^E	SKB12507 ^E
	12000# FE-970 (Straight Pin)		156, 157	B	1.606 x 8.81	SKS97018	SKB97018
	12000# FF-971		1300	B	1.609 x 9.37	SKS97118	SKB97118
	12000# FF-901, FF-903		167, 172	B	1.794 x 9.12	SKS90112	SKB90112
	12000# FF-921, FF-923		193, 199	B	1.794 x 10.39	SKS92112	SKB92112
	16000# FH-901		168, 170	B	1.999 x 11.04	SKS0890112	SKB0890112
	18000# FL-901		168, 170	B	1.999 x 11.04	SKS0890112	SKB0890112
	12000# FF-930		121	E	1.794 x 10.68	SKS17007 ^E	SKB17007 ^E
	12000# FF-931 FF-932, FF-933, FF-934		195, 1307	B	1.794 x 10.40	SKS93112	SKB93112
1-599 Series	13200# FF-941 FF-942, FF-943, FF-944, FF-945		195, 1307	B	1.794 x 10.40	SKS93112	SKB93112
600 Series	13200# FF-941 FF-942, FF-943, FF-944, FF-945		1315, 1470	B	1.794 x 10.40	SKS96112	SKB96112
	FF-946		R201473	B	1.794 x 10.40	SKS12018	SKB12018
	13200# FF-961 FF-962, FF-966, FF-967, FC-965		1315, 1470	B	1.794 x 10.40	SKS96112	SKB96112
	12000# FF-981 FF-982, FF-983, FF-984, FF-986 FF-987		1419, 1472	B	1.794 x 8.87	SKS98118	SKB98118
	14600# FG-931 FG-933, FG-941, FG-943, FG-952		1309, 1310, 1319, 1471	B	1.794 x 10.40	SKS0793118	SKB0793118
	16000# FH-941, 20000# FH-945, FH-946		1424, 1420	B	1.794 x 9.19	SKS0894618	SKB0894618
	18000# FL-931 FL-933, FL-941, FL-943, FH-951		198, 1312	B	1.999 x 11.21	SKS0893112	SKB0893112
	6000# MFS-06		R201478	A	1.234 x 6.78	SKS6018	SKB6018
	7000# MFS-07		R201479, R201483	B	1.499 x 7.15	SKS7018	SKB7018
	8000# MFS-08		R201474	B	1.499 x 7.50	SKS8018	SKB8018
	10000# MFS-10		R201470	B	1.794 x 10.40	SKS96112	SKB96112
	12000# MFS-12122A, MFS-12143A, MFS-12153A		R201315, R201470	B	1.794 x 10.40	SKS96112	SKB96112
	12000# MFS-12122D, MFS-12143D, MFS-12144D		R201419, R201472	B	1.794 x 8.87	SKS98118	SKB98118
	12000# MFS-12144A, MFS-12155A		R201473	B	1.794 x 10.40	SKS12018	SKB12018
	13000# MFS-13122D, MFS-13143D, MFS-13144D		R201419, R201472	B	1.794 x 8.87	SKS98118	SKB98118
	13000# MFS-131015, MFS-13143A, MFS-13144A		R201471	B	1.794 x 10.40	SKS0793118	SKB0793118
	14000# MFS-141015, MFS-14143A, MFS-14153A		R201471	B	1.794 x 10.40	SKS0793118	SKB0793118
	16000# MFS-161015, MFS-16122A, MFS-16143A		R201475	B	1.999 x 11.21	SKS18018	SKB18018
	16000# MFS-16133A		R201476	B	1.999 x 11.21	SKS18118	SKB18118
	18000# MFS-18133A		R201476	B	1.999 x 11.21	SKS18118	SKB18118
	18000# MFS-18143A		R201475	B	1.999 x 11.21	SKS18018	SKB18018
	20000# MFS-20133A		R201476	B	1.999 x 11.21	SKS18118	SKB18118
	20000# MFS-20142A		R201477	B	1.999 x 11.21	SKS0893112	SKB0893112
SPICER / DANA / EATON							
	6000# 02-ADA, 8000# 02-ADB, 02-ADV, 02-ADW		166027C91, 101KK111	B	1.359 x 7.97	SKS10209	SKB10209
	8000# 02-AEM,	Pre Oct 2002	101KK111	B	1.359 x 7.97	SKS10209	SKB10209
	8000# 02-AEM, 02-AHA, 02-AGZ, 02-ADZ, 02-AGN	Post Oct 2002	329182	C	1.359 x 7.97	SKS10319	SKB10319
	8000# 02-ATK		R201604	B	1.499 x 7.50	SKS8018	SKB8018
	10000# 02-ADC, 02-ADL		1668411C91	B	1.921 x 9.87	SKS12009 ^B	SKB12009 ^B
	12000# 02-ADD, 02-ADG, 02-ADN, 02-ADP	1989 to Date	1668411C91, 120KK100	B	1.921 x 9.87	SKS12009 ^B	SKB12009 ^B
	02-AEA		806355	A	1.625 x 9.19	SKS12005	SKB12005
	12000# 02-AED, 02-AEG		816787, 823078, 328344, 328342	A	1.794 x 9.05	SKS12205	SKB12205
	12000# 02-AGA		328346, 328348	C	1.794 x 9.05	SKS12305	SKB12305
	12000# 02-ARK, 02-ARL, 02-ASB, 02-ASD		2500542C91	B	1.794 x 8.87	SKS98118	SKB98118
	12000# 02-ARA, 02-ARV, 02-ARW, 02-ASX		1665531C91	B	1.794 x 10.40	SKS96112	SKB96112
	02-ARG			B	1.794 x 10.40	SKS0793118	SKB0793118
	12000# 02-ASV, 02-ASW, 02-AUB, 02-AUC, 02-AUD		60961-009, 60961-039, 60961-040			SKS12108	SKB12108
02 CODES							

A - King pin has additional lock flats for use in multiple axles. B - King pin engineered to be longer than OEM pin.
 C - Torque spec for king pin nut 230 ft./lbs. D - Torque spec for king pin nut Is 406 ft./lbs. E - torque spec for king pin nut Is 350/475 ft./lbs.
 F - Torque spec for knuckle attachment bolts is 170-200 ft./lbs.

For T-Handle Wrenches, Bronze Bushing Drivers, and Lip Seal Install Tools - See pg 35



Model	Axle	Year	OEM Number	Pin Type	King Pin Dimensions	Steer King Spiral SKS	Steer King Bronze SKB
SPICER / DANA / EATON							
O2 CODES	14000# 02-ADE, 02-ADT, 02-AES, 02-AET, 02-AGL, 02-AGV	1990 to Date	140KK100, 329022	B	2.046 x 10.12	SKS14119 ^B	SKB14119 ^B
	14600# 02-AEZ, 02-AGB, 02-AGC, 02-AGE		328347, 328349	C	1.872 x 9.05	SKS14705	SKB14705
	16000# 02-ADH, 02-AEU, 02-AEV, 02-AEW, 18000# 02-ADJ, 20000# 02-ADK		220KK100, 1685405C91	B	2.046 x 11.00	SKS16019	SKB16019
	18000# 02-ARU		2505495C91	B	1.999 x 11.21	SKS18018	SKB18018
	18000# 02-ARZ, 02-ARY			B	1.999 x 11.21	SKS18118	SKB18118
D CODES	6000# D600, 7000# D700, 8500# D850		329182	C	1.359 x 7.97	SKS10319	SKB10319
	8000# D800	Pre Oct 2002	101KK111	B	1.359 x 7.97	SKS10209	SKB10209
	8000# D800F	Post Oct 2002	329182	C	1.359 x 7.97	SKS10319	SKB10319
	20000# D2000F, 22000# D2200F		331434	B	2.046 x 10.07	SKS20019	SKB20019
	20000# D2000F, 22000# D2200F		331435	C	2.046 x 10.07	SKS20119	SKB20119
E CODES	10000# E1000I/W, 12000# E1200I/W, E1201I/W, 13200# E1320I/W		823078, 328344, 328342	A	1.794 x 9.05	SKS12205	SKB12205
	12000# E1203I		328346, 328348	C	1.794 x 9.05	SKS12305	SKB12305
	14600# E1460I/W		824530, 824920, 328345, 328343, 329404, 329405	A	1.872 x 9.05	SKS14605	SKB14605
	10000# E1002I/W, 12000# E1202I/W, 13200# E1322I/W, 14600# E1462I/W		328347, 328349	C	1.872 x 9.05	SKS14705	SKB14705
EFA CODES	12000# EFA12F3		806356, 1005632	A	1.625 x 9.19	SKS12105	SKB12105
	10000# EFA10F5, 12000# EFA12F4, 13200# EFA13F5		806355, 815984, 1008431	A	1.625 x 9.19	SKS12005	SKB12005
	18000# EFA18F3, EFA18F4, 20000# EFA20F4, 22000# EFA22T2, EFA22T5, 24000# EFA24T2, EFA24T5		811525, 1008500, 329432, 329433, 329434	A	1.872 x 9.97	SKS18005	SKB18005
I CODES	5000# I-050		473695C91	A	1.359 x 7.97	SKS10109	SKB10109
	6000# I-060		473695C91	A	1.359 x 7.97	SKS10109	SKB10109
	6000# I-60S, I-60SG, I-61		166027C91, 101KK111	B	1.359 x 7.97	SKS10209	SKB10209
	7500# I-075		473695C91	A	1.359 x 7.97	SKS10109	SKB10109
	8000# I-080		473695C91	A	1.359 x 7.97	SKS10109	SKB10109
	8000# I-80S I-80SG		166027C91, 101KK111	B	1.359 x 7.97	SKS10209	SKB10209
	9000# I-090	Pre Aug 1981	470752C91, 483095C91	A	1.609 x 9.16	SKS30909	SKB30909
	9000# I-090	Post Aug 1981	586806C91	B	1.609 x 9.16	SKS31009	SKB31009
	10000# I-100S, I-100SA, I-100SG		1668411C91	B	1.921 x 9.87	SKS12009 ^B	SKB12009 ^B
	10800# I-108 All except code 02309		399942C93, 1658934C91, 586808C91	B	1.609 x 9.66	SKS14009	SKB14009
	10800# I-108 For code 02309		586806C91	B	1.609 x 9.16	SKS31009	SKB31009
	12000# I-120 All except code 02309		399942C93, 1658934C91, 586808C91	B	1.609 x 9.66	SKS14009	SKB14009
	12000# I-120 For code 02309		586806C91	B	1.609 x 9.16	SKS31009	SKB31009
	12000# I-120S, I-120SG, I-120SGL	1989 to date	1668411C91, 120KK100	B	1.921 x 9.87	SKS12009 ^B	SKB12009 ^B
	13200# I-132		588808C91, 1658394C91	B	1.609 x 9.66	SKS14009	SKB14009
	14000# I-140S, I-140SG, I-140W, I-132SG	1990 to date	140KK100, 329022	B	2.046 x 10.12	SKS14119 ^B	SKB14119 ^B
	14600# I-146S, I-146SA		120KK102	B	1.860 x 10.75	SKS14619	SKB14619
	16000# I-160S, I-160W 18000# I-180S, I-180W 20000# I-200S, I-200W 22000# I-220S, I-220W		220KK100, 1685405C91, 329023	B	2.046 x 11.00	SKS16019	SKB16019
	16000# I-160S, I-160SB for MCI Buses only		161KK100	B	2.046 x 11.00	SKS16119	SKB16119
	I-161		329116	B	1.794 x 11.00	SKS16219	SKB16219
STERLING (See Rockwell / Meritor, Spicer / Dana / Eaton)							
VOLVO							
	9000# FM9		85108338	E	2.360 x 8.92	SKS53613	SKB53613
	12000# FM12		85108338	E	2.360 x 8.92	SKS53613	SKB53613
	12000# FXL12		301SQ53	E	2.360 x 8.92	SKS53613	SKB53613
	14600# FXL14.6		301SQ53	E	2.360 x 8.92	SKS53613	SKB53613
	18000# FXL18		301SQ53	E	2.360 x 8.92	SKS53613	SKB53613
	20000# FXL20		301SQ53	E	2.360 x 8.92	SKS53613	SKB53613
	23000# FXL23		301SQ53	E	2.360 x 8.92	SKS53613	SKB53613
	10000# VF10, 12000# VF12, 12500# VF125, FAX5.5, FAX5.7		3130711, V3090267	E	1.777 x 8.62	SKS12222 ^C	SKB12222 ^C
	VF14, VF16, VF18		3090266	E	1.969 x 9.88	SKS14022	SKB14022
			3093704	B	1.794 x 8.87	SKS98118	SKB98118
			V1112810	A	1.625 x 9.19	SKS12005	SKB12005
			85106184	A	1.794 x 9.05	SKS12205	SKB12205





PLEASE CHECK AVAILABILITY pg 35

Model	Axle	Year	OEM Number	Pin Type	King Pin Dimensions	Steer King Spiral SKS	Steer King Bronze SKB
WATSON & CHALIN							
	SL8K w/ MERITOR AXLE		SRK103	B	1.500 x 8.93	SKS94118	SKB94118
	SL8K w/ WESTPORT AXLE		SRK115	B	1.500 x 8.93	SKS8123	SKB8123
	1100 Series w/ MERITOR AXLE		SRK102	B	1.794 x 10.40	SKS96112	SKB96112
	1100 Series w/ WESTPORT AXLE		SRK98, SRK112	B	1.794 x 10.40	SKS13023	SKB13023
	SL2089, SL2090, SLTL2095, STL2096 w/ MERITOR AXLE		SRK105	B	1.999 x 11.21	SKS0893112	SKB0893112
	SL2089, SL2090, SLTL2095, STL2096 w/ WESTPORT AXLE		SRK120	B	1.999 x 11.21	SKS18118	SKB18118
WHITE / WESTPORT							
	7000#	1966-1967		B	1.234 x 7.43	SKS7004	SKB7004
	F4W-0800		143698-0040	B	1.300 x 7.75	SKS7206	SKB7206
	F3W-1200, F5W-1200, F6W-1200 (12000#)	1952-1975	216446	A	1.810 x 10.78	SKS12023	SKB12023
	F3W-1300, F3W-1400, F3W-1600, F6W-1300, F6W-1400, F6W-1600		143698-0052	A	1.810 x 10.56	SKS12723	SKB12723
	F3W-125 (12000#)	1975 to date	143698-0001	A	1.810 x 10.56	SKS12523	SKB12523
	F3W-140, F5W-140, F6W-140 (14000#)	1966-1975	216446	A	1.810 x 10.78	SKS12023	SKB12023
	F3W, F6W, 1200 Series	1975 to date	37090-5005, 143698-0051	A	1.810 x 10.56	SKS12623	SKB12623
	F3W, F6W 1400 Series	1975 to date	217175, 143698-0001	A	1.810 x 10.56	SKS12523	SKB12523
	F0W-1800, F3W-2000, F2W-2000D		143698-0018	B	1.999 x 11.21	SKS18118	SKB18118
	9000# (FD-901)	1960-1967	138, 142, 154	B	1.434 x 8.50	SKS0490118	SKB0490118
	12000# (FE-900)	1955-1965	857328	E	1.609 x 9.75	SKS12507 ^E	SKB12507 ^E
	16000# (FH-901)	1965-1975	168, 170	B	1.999 x 11.04	SKS0890112	SKB0890112
	18000# (FL-901)	1965-1975	1720728, 1739844	B	1.999 x 11.04	SKS0890112	SKB0890112
	WS1637090-4405		143698-0051	A	1.811 x 10.56	SKS12623	SKB12623
	F5W0900		143698-0053	B	1.606 x 9.08	SKS9606	SKB9606
WORKHORSE							
			8006372	A	1.179 x 6.36	SKS5807	SKB5807
			8803050	A	1.179 x 6.36	SKS5607	SKB5607
			8003056	A	1.179 x 7.31	SKS5023	SKB5023



THE AXLE SLEEVE

**FOR AXLE REAMING - KING PIN REPAIRS
 AVAILABLE FOR THE FOLLOWING KITS**

- SKS12005**
- SKS12205**
- SKS14605**
- SKS14705**
- SKS18005**

A - King pin has additional lock flats for use in multiple axles. B - King pin engineered to be longer than OEM pin.
 C - Torque spec for king pin nut 230 ft./lbs. D - Torque spec for king pin nut ls 406 ft./lbs. E - torque spec for king pin nut ls 350/475 ft./lbs.
 F - Torque spec for knuckle attachment bolts is 170-200 ft./lbs.

For T-Handle Wrenches, Bronze Bushing Drivers, and Lip Seal Install Tools - See pg 35



BUS OEM AXLE CROSS REFERENCE

BLUEBIRD, FORD, GILLIG, GMC COACH,
INTERNATIONAL/NAVISTAR, MAN, MCI,
NEO PLAN, NEW FLYER, ROCKWELL/MERITOR, THOMAS

PLEASE CHECK AVAILABILITY pg 35

Model	Axle	Year	OEM Number	Pin Type	King Pin Dimensions	Steer King Spiral SKS	Steer King Bronze SKB
Bus Steering Knuckle King Pin Kits							
BLUEBIRD							
All American	Airtek Softek 649505-0004		00063311 LT SIDE, 00063312 RT SIDE, 00063313 BT SIDES			SKS12108	SKB12108
	12000# FF-942			B	1.794 x 10.40	SKS93112	SKB93112
	12000# I-120S, I-120SG, I-120SGL		8305203	B	1.921 x 9.87	SKS12009 ^B	SKB12009 ^B
TC2000	12000# I-120SA, I-120IS, I-126SA, I-126IS 14600# I-146SA	1990+	4294716	B	1.859 x 10.75	SKS14619	SKB14619
	14000# I-140S, I-140SG, I-146		8305211	B	2.046 x 10.12	SKS14119 ^B	SKB14119 ^B
	10800#	1988-1989	2156784, 4293270	B	1.609 x 9.66	SKS14009	SKB14009
Rockwell Axles	12000-13200# FF-934, FF-942, FF-944		195, 1307	B	1.794 x 10.40	SKS93112	SKB93112
Uses Lock Pin Sizes 3.68 & 3.25	13200# FF-961, FF-967		1315, 4280855	B	1.794 x 10.40	SKS96112	SKB96112
	14600# FG-941, FG-943		1309, 1310	B	1.794 x 10.40	SKS0793118	SKB0793118
FORD							
	7000# Hyd. Brakes	1967-1988	C7TZ-3111A	A	1.231 x 8.90	SKS7006	SKB7006
	7000-9000# Air Brakes	1975-1988	D6TZ-3111A	B	1.433 x 8.25	SKS7506	SKB7506
	7000-9000# Air Brakes	1989+	E9HZ-3111C	B	1.433 x 8.25	SKS7606	SKB7606
	9000# Hyd. Brakes	1960-1983	D1HZ-3111A, C2TZ-3111G	B	1.434 x 8.50	SKS0490118	SKB0490118
	9000# Air Brakes	1975-1988	D6HZ-3111B	B	1.606 x 9.07	SKS9506	SKB9506
	9000# Air Brakes	1989+	E9HZ-3111B	B	1.606 x 9.07	SKS9606	SKB9606
GILLIG							
	14600#FG-931		1309, 1310, 1319, 1471	B	1.794 x 10.40	SKS0793118	SKB0793118
	16000# FH-946		1420, 1424	B	1.794 x 9.19	SKS0894618	SKB0894618
GMC COACH							
Transit Coach	7000#		2470621	B	1.234 x 7.43	SKS7004	SKB7004
	12000#		2362900, 2237497	E	1.609 x 9.75	SKS12507 ^E	SKB12507 ^E
	15000#, 16000#		2254366, IC-2-40	E	1.794 x 10.68	SKS17007 ^E	SKB17007 ^E
INTERNATIONAL / NAVISTAR							
	6000# I-60S (02-ADA)		1660271C92	B	1.359 x 7.97	SKS10209	SKB10209
	8000# I-80S (02-ADB)		1660271C92	B	1.359 x 7.97	SKS10209	SKB10209
	10000# I-100S (02-ADC), 12000# I-120S (02-ADD)			B	1.921 x 9.87	SKS12009 ^B	SKB12009 ^B
	14000# I-140S (02-ADE), (02-AGV)		1668412C91	B	2.046 x 10.12	SKS14119 ^B	SKB14119 ^B
MAN							
	V8-65C-02	1993	81-44205-6013, 6313078	J	1.969 x 8.77	SKS12014	SKB12014
MCI							
MC-7, MC-8, MC-9	15000#, 16000#		2254366, IC-2-40	E	1.794 x 10.68	SKS17007 ^E	SKB17007 ^E
	13200# FF-941, FF-961			B	1.794 x 10.40	SKS96112	SKB96112
MC-12	14600# FG-931		IJ-2-54	B	1.794 x 10.40	SKS0793118	SKB0793118
102DL3	16000#, 20000# FH-946		01-01-1017, 01-01-1079	B	1.794 x 9.19	SKS0894618	SKB0894618
G Coach	16000# I-160S			B	2.046 x 11.00	SKS16119	SKB16119
NEO PLAN							
	I-161		329116	B	1.794 x 11.00	SKS16219	SKB16219
NEW FLYER							
	MAN		6313078	J	1.969 x 8.77	SKS12014	SKB12014
ROCKWELL / MERITOR							
	14600# 17100, 17101, 17111, 17801		R201309, R201310, R201319, R201471	B	1.794 x 10.40	SKS0793118	SKB0793118
	8000# MFS-08		R201474	B	1.500 x 7.50	SKS8018	SKB8018
	12000# FF-931, FF-932, FF-933, FF-934		R200195, R201307	B	1.794 x 10.40	SKS93112	SKB93112
1-599 SERIES	13200# FF-941, FF-942, FF-943, FF-944, FF-945		R200195, R201307	B	1.794 x 10.40	SKS93112	SKB93112
600 SERIES	13200# FF-941, FF-942, FF-943, FF-944, FF-945		R201315, R201470	B	1.794 x 10.40	SKS96112	SKB96112
	13200# FF-961, FF-962, FF-966, FF-967, FC-965		R201315, R201470	B	1.794 x 10.40	SKS96112	SKB96112
	14600# FG-931 FG-933, FG-941, FG-943, FG-952		R201309, R201310, R201319, R201471	B	1.794 x 10.40	SKS0793118	SKB0793118
	16000# FH-941, 20000# FH-945, FH-946		R201420, R201424	B	1.794 x 9.19	SKS0894618	SKB0894618
	18000# FL-931, FL-933, FL-941, FL-943, FL-951		R200198, R201312	B	1.999 x 11.21	SKS0893112	SKB0893112
THOMAS							
ER-Series School Bus Chassis; Rear Engine			8314171	B	1.359 x 7.97	SKS10209	SKB10209
	13,200# FF-932		1307	B	1.794 x 10.40	SKS93112	SKB93112
	14,600# FG-941, FG-944		1309, 1310	B	1.794 x 10.40	SKS0793118	SKB0793118
	AF-10.0-3, AF-12.0-3, AF-13.0-3, AF-13.3-3, AF-14.7-3		P6073300019KZ, P6073300119KZ	B	1.771 x 9.23	SKS12001	SKB12001



Single Lock

Double Lock Opposite Side

Double Lock Same Side

Tapered Threaded

Tapered

Step Threaded

No Lock

Single Step

COMPETITIVE KIT INTERCHANGE

ALLIANCE AXLE - CHEVROLET / GMC

PLEASE CHECK AVAILABILITY pg 35

Cross Reference	SKS Spiral Kit	SKB Bronze Kit
ALLIANCE AXLE		
P6073300019KZ	SKS12001	SKB12001
P6073300119KZ	SKS12001	SKB12001
P6073300219KZ	SKS8001	SKB8001
P6073300319KZ	SKS8001	SKB8001
P6073300419KZ	SKS16001	SKB16001
P6073300519KZ	SKS16001	SKB16001
AUTOCAR		
836687	SKS12507	SKB12507
857328	SKS12507	SKB12507
859552	SKS97018	SKB97018
1715447	SKS97018	SKB97018
1739844	SKS0890112	SKB0890112
02-7091941	SKS92112	SKB92112
AUTOMANN		
460.102B	SKS7007	SKB7007
460.105B	SKS6826	SKB6826
460.106B	SKS6926	SKB6926
460.122B	SKS97018	SKB97018
460.148B	SKS92112	SKB92112
460.160B	SKS14009	SKB14009
460.162B	SKS7506	SKB7506
460.164B	SKS5507	SKB5507
460.166B	SKS0893112	SKB0893112
460.168B	SKS94106	SKB94106
460.172B	SKS0535006	SKB0535006
460.186B	SKS0535006	SKB0535006
460.194B	SKS53313	SKB53313
460.196B	SKS12107	SKB12107
460.200B	SKS12623	SKB12623
460.204B	SKS93112	SKB93112
460.206B	SKS31009	SKB31009
460.207B	SKS70020	SKB70020
460.212B	SKS61613	SKB61613
460.216B	SKS14009	SKB14009
460.220C	SKS12005	SKB12005
460.244B	SKS10209	SKB10209
460.246B	SKS96112	SKB96112
460.254B	SKS12005	SKB12005
460.255N	SKS12222	SKB12222
460.260B	SKS12009	SKB12009
460.260C	SKS12009	SKB12009
460.262B	SKS14119	SKB14119
460.264B	SKS7606	SKB7606
460.266B	SKS8007	SKB8007
460.286B	SKS12205	SKB12205
460.480B	SKS5607	SKB5607
460.512C	SKS14605	SKB14605
460.518C	SKS98118	SKB98118
460.534B	SKS14705	SKB14705
460.536C	SKS10319	SKB10319
BLUEBIRD		
00063311	SKS12108	SKB12108
00063312	SKS12108	SKB12108
00063313	SKS12108	SKB12108

Cross Reference	SKS Spiral Kit	SKB Bronze Kit
BLUEBIRD		
2137305	SKS93112	SKB93112
2156784	SKS14009	SKB14009
2599033	SKS93112	SKB93112
4279568	SKS0793118	SKB0793118
4280855	SKS96112	SKB96112
4293270	SKS14009	SKB14009
4294716	SKS14619	SKB14619
8305203	SKS12009	SKB12009
8305211	SKS14119	SKB14119
8314171	SKS10209	SKB10209
M-2300	SKS5107	SKB5107
M-2301	SKS9809	SKB9809
M-2305	SKS12507	SKB12507
M-2306	SKS9507	SKB9507
M-2309	SKS12507	SKB12507
M-2310	SKS5006	SKB5006
M-2311	SKS0490118	SKB0490118
M-2312	SKS0490118	SKB0490118
M-2313	SKS9507	SKB9507
M-2315	SKS90112	SKB90112
M-2316	SKS7007	SKB7007
M-2317	SKS7007	SKB7007
M-2318	SKS5107	SKB5107
M-2319	SKS5107	SKB5107
M-2320	SKS7006	SKB7006
M-2321	SKS7006	SKB7006
M-2322	SKS90112	SKB90112
M-2325	SKS10909	SKB10909
M-2326	SKS97018	SKB97018
M-2327	SKS97018	SKB97018
BWP		
M-2331	SKS92112	SKB92112
M-2332	SKS14009	SKB14009
M-2333	SKS14009	SKB14009
M-2334	SKS7506	SKB7506
M-2335	SKS5507	SKB5507
M-2336	SKS0890112	SKB0890112
M-2337	SKS0535006	SKB0535006
M-2338	SKS9506	SKB9506
M-2339	SKS0893112	SKB0893112
M-2340	SKS94106	SKB94106
M-2341	SKS10109	SKB10109
M-2342	SKS10809	SKB10809
M-2343	SKS13909	SKB13909
M-2344	SKS13909	SKB13909
M-2345	SKS30909	SKB30909
M-2347	SKS53313	SKB53313
M-2348	SKS93112	SKB93112
M-2349	SKS12623	SKB12623
M-2350	SKS12107	SKB12107
M-2351	SKS12023	SKB12023
M-2352	SKS0890112	SKB0890112
M-2353	SKS53513	SKB53513
M-2358	SKS97118	SKB97118

Cross Reference	SKS Spiral Kit	SKB Bronze Kit
BWP		
M-2363	SKS7004	SKB7004
M-2370	SKS5507	SKB5507
M-2373	SKS30909	SKB30909
M-2375	SKS0535006	SKB0535006
M-2378	SKS12523	SKB12523
M-2379	SKS31009	SKB31009
M-2380	SKS14009	SKB14009
M-2381	SKS93112	SKB93112
M-2382	SKS12005	SKB12005
M-2383	SKS12105	SKB12105
M-2384	SKS10209	SKB10209
M-2385	SKS96112	SKB96112
M-2386	SKS10909	SKB10909
M-2387	SKS14009	SKB14009
M-2388	SKS5107	SKB5107
M-2389	SKS12005	SKB12005
M-2390	SKS12105	SKB12105
M-2391	SKS5607	SKB5607
M-2392	SKS7206	SKB7206
M-2397	SKS12205	SKB12205
CHEVROLET / GMC		
722166	SKS5507	SKB5507
859552	SKS90112	SKB90112
1561960	SKS8007	SKB8007
1561961	SKS11007	SKB11007
1561962	SKS12007	SKB12007
2010021	SKS93112	SKB93112
2036352	SKS0893112	SKB0893112
2224495	SKS5107	SKB5107
2254366	SKS17007	SKB17007
2264897	SKS12507	SKB12507
2321013	SKS9507	SKB9507
2362900	SKS12507	SKB12507
2431372	SKS9507	SKB9507
2442145	SKS97018	SKB97018
2452865	SKS0890112	SKB0890112
2470621	SKS7004	SKB7004
2927942	SKS5107	SKB5107
3691111	SKS5107	SKB5107
3745285	SKS0490118	SKB0490118
3829410	SKS5107	SKB5107
3829970	SKS7007	SKB7007
3838390	SKS7007	SKB7007
3853990	SKS5107	SKB5107
3853994	SKS7007	SKB7007
3854744	SKS5107	SKB5107
3858389	SKS5107	SKB5107
3858390	SKS7007	SKB7007
3927942	SKS5107	SKB5107
3927943	SKS7007	SKB7007
8885021	SKS9507	SKB9507
8885621	SKS12107	SKB12107
8885856	SKS12107	SKB12107
8885857	SKS7007	SKB7007
12472161	SKS5607	SKB5607



PLEASE CHECK AVAILABILITY pg 35

Cross Reference	SKS Spiral Kit	SKB Bronze Kit
CHEVROLET / GMC		
12472162	SKS5807	SKB5807
12540328	SKS8007	SKB8007
12540329	SKS11007	SKB11007
12540330	SKS12007	SKB12007
12541348	SKS18005	SKB18005
15510849	SKS93112	SKB93112
15512233	SKS97018	SKB97018
15512234	SKS0890112	SKB0890112
15512235	SKS90112	SKB90112
15512239	SKS0793118	SKB0793118
15521976	SKS5807	SKB5807
15522020	SKS5607	SKB5607
15536398	SKS5507	SKB5507
15584763	SKS5607	SKB5607
15585841	SKS0893112	SKB0893112
15618118	SKS0793118	SKB0793118
19243453	SKS18005	SKB18005
85106184	SKS12205	SKB12205
88911967	SKS5607	SKB5607
88911968	SKS5607	SKB5607
88911998	SKS12007	SKB12007
88936011	SKS8018	SKB8018
88936044	SKS96112	SKB96112
88936084	SKS6018	SKB6018
88936119	SKS7018	SKB7018
88936144	SKS0793118	SKB0793118
94058104	SKS6826	SKB6826
97723802	SKS6926	SKB6926
97782770	SKS6926	SKB6926
98438973	SKS6926	SKB6926
98441181	SKS6926	SKB6926
98443583	SKS6926	SKB6926
98443939	SKS6926	SKB6926
98448583	SKS6826	SKB6826
IC-2-40	SKS17007	SKB17007
DANA / NAPA		
101KK100	SKS10109	SKB10109
101KK111	SKS10209	SKB10209
120KK100	SKS12009	SKB12009
120KK102	SKS14619	SKB14619
262-1012	SKS5107	SKB5107
262-1016	SKS5107	SKB5107
262-1017	SKS7007	SKB7007
262-1018	SKS7006	SKB7006
262-1331	SKS5107	SKB5107
262-1336	SKS9809	SKB9809
262-1364	SKS12507	SKB12507
262-1406	SKS9507	SKB9507
262-1407	SKS0490018	SKB0490018
262-1414	SKS0490118	SKB0490118
262-1421	SKS7004	SKB7004
262-1422	SKS12507	SKB12507
262-1425	SKS0490118	SKB0490118
262-1431	SKS7004	SKB7004
262-1443	SKS12023	SKB12023

Cross Reference	SKS Spiral Kit	SKB Bronze Kit
DANA / NAPA		
262-1461	SKS5006	SKB5006
262-1462	SKS7007	SKB7007
262-1463	SKS5107	SKB5107
262-1464	SKS90112	SKB90112
262-1467	SKS9507	SKB9507
262-1468	SKS97018	SKB97018
262-1472	SKS5107	SKB5107
262-1473	SKS7007	SKB7007
262-1475	SKS5107	SKB5107
262-1476	SKS7006	SKB7006
262-1482	SKS90112	SKB90112
262-1483	SKS7006	SKB7006
262-1488	SKS97018	SKB97018
262-1490	SKS10909	SKB10909
262-1491	SKS14009	SKB14009
262-1506	SKS97018	SKB97018
262-1507	SKS90112	SKB90112
262-1508	SKS14009	SKB14009
262-1509	SKS10909	SKB10909
262-1510	SKS0490118	SKB0490118
262-1512	SKS0890112	SKB0890112
262-1513	SKS0890112	SKB0890112
262-1514	SKS97018	SKB97018
262-1515	SKS7006	SKB7006
262-1525	SKS92112	SKB92112
262-1537	SKS7506	SKB7506
262-1547	SKS5507	SKB5507
262-1548	SKS5507	SKB5507
262-1549	SKS0535006	SKB0535006
262-1550	SKS94106	SKB94106
262-1551	SKS9506	SKB9506
262-1554	SKS0893112	SKB0893112
262-1555	SKS10109	SKB10109
262-1556	SKS9410601	SKB9410601
262-1557	SKS10809	SKB10809
262-1558	SKS13909	SKB13909
262-1559	SKS13909	SKB13909
262-1560	SKS30909	SKB30909
262-1561	SKS30909	SKB30909
262-1562	SKS14009	SKB14009
262-1563	SKS0535006	SKB0535006
262-1569	SKS53313	SKB53313
262-1570	SKS53513	SKB53513
262-1572	SKS93112	SKB93112
262-1574	SKS12107	SKB12107
262-1576	SKS12623	SKB12623
262-1577	SKS12523	SKB12523
262-1578	SKS9809	SKB9809
262-1579	SKS31009	SKB31009
262-1580	SKS97118	SKB97118
262-1582	SKS12107	SKB12107
262-1583	SKS0793118	SKB0793118
262-1584	SKS14009	SKB14009
262-1585	SKS12005	SKB12005
262-1586	SKS12105	SKB12105

Cross Reference	SKS Spiral Kit	SKB Bronze Kit
DANA / NAPA		
262-1587	SKS7106	SKB7106
262-1588	SKS5607	SKB5607
262-1590	SKS0893112	SKB0893112
262-1591	SKS61613	SKB61613
262-1592	SKS93112	SKB93112
262-1593	SKS93112	SKB93112
262-1594	SKS18005	SKB18005
262-1597	SKS7206	SKB7206
262-1598	SKS94206	SKB94206
262-1599	SKS9606	SKB9606
262-1600	SKS94106	SKB94106
262-1601	SKS94106	SKB94106
262-1603	SKS10209	SKB10209
262-1604	SKS96112	SKB96112
262-1605	SKS10909	SKB10909
262-1606	SKS14009	SKB14009
262-1608	SKS5107	SKB5107
262-1609	SKS12005	SKB12005
262-1610	SKS12105	SKB12105
262-1611	SKS5607	SKB5607
262-1632	SKS7106	SKB7106
262-1633	SKS18005	SKB18005
262-1634	SKS96112	SKB96112
262-1635	SKS12009	SKB12009
262-1636	SKS14119	SKB14119
262-1637	SKS7606	SKB7606
262-1638	SKS9420601	SKB9420601
262-1639	SKS14606	SKB14606
262-1640	SKS8007	SKB8007
262-1641	SKS11007	SKB11007
262-1642	SKS12007	SKB12007
262-1682	SKS12107	SKB12107
343KK103	SKS14009	SKB14009
429-4716	SKS14619	SKB14619
DAYTON		
300-101A	SKS12008	SKB12008
300-107	SKS5107	SKB5107
300-110	SKS9809	SKB9809
300-125	SKS12507	SKB12507
300-128	SKS9507	SKB9507
300-140	SKS7004	SKB7004
300-141	SKS7004	SKB7004
300-142	SKS12023	SKB12023
300-148	SKS53513	SKB53513
300-150	SKS12507	SKB12507
300-152	SKS5107	SKB5107
300-153	SKS7007	SKB7007
300-154	SKS7007	SKB7007
300-155	SKS5006	SKB5006
300-156	SKS5006	SKB5006
300-158	SKS0490118	SKB0490118
300-159	SKS0490118	SKB0490118
300-160	SKS0490118	SKB0490118
300-161	SKS0490118	SKB0490118
300-163	SKS9507	SKB9507



COMPETITIVE KIT INTERCHANGE

DAYTON - EATON TOP SPEC

PLEASE CHECK AVAILABILITY pg 35

Cross Reference	SKS Spiral Kit	SKB Bronze Kit
DAYTON		
300-170	SKS7004	SKB7004
300-171	SKS90112	SKB90112
300-172	SKS7007	SKB7007
300-173	SKS7007	SKB7007
300-174	SKS5107	SKB5107
300-175	SKS5107	SKB5107
300-176	SKS5107	SKB5107
300-177	SKS5107	SKB5107
300-179	SKS7006	SKB7006
300-180	SKS7006	SKB7006
300-182	SKS90112	SKB90112
300-187	SKS10909	SKB10909
300-194	SKS10909	SKB10909
300-195	SKS97018	SKB97018
300-196	SKS97018	SKB97018
300-204	SKS92112	SKB92112
300-205	SKS14009	SKB14009
300-206	SKS14009	SKB14009
300-207	SKS7506	SKB7506
300-208	SKS5507	SKB5507
300-209	SKS5507	SKB5507
300-210	SKS0890112	SKB0890112
300-211	SKS0890112	SKB0890112
300-214	SKS0535006	SKB0535006
300-215	SKS9506	SKB9506
300-216	SKS0893112	SKB0893112
300-217	SKS94106	SKB94106
300-218	SKS10109	SKB10109
300-220	SKS10809	SKB10809
300-221	SKS13909	SKB13909
300-222	SKS13909	SKB13909
300-223	SKS30909	SKB30909
300-224	SKS30909	SKB30909
300-227	SKS9410601	SKB9410601
300-228	SKS0535006	SKB0535006
300-230	SKS53513	SKB53513
300-231	SKS53313	SKB53313
300-232	SKS93112	SKB93112
300-233	SKS12107	SKB12107
300-234	SKS12523	SKB12523
300-235	SKS12623	SKB12623
300-240	SKS97118	SKB97118
300-242	SKS93112	SKB93112
300-244	SKS0793118	SKB0793118
300-245	SKS61613	SKB61613
300-248	SKS31009	SKB31009
300-249	SKS14009	SKB14009
300-250	SKS13909	SKB13909
300-255	SKS7004	SKB7004
300-257	SKS12005	SKB12005
300-258	SKS12105	SKB12105
300-259	SKS5607	SKB5607
300-260	SKS7206	SKB7206
300-261	SKS94106	SKB94106
300-262	SKS94206	SKB94206

Cross Reference	SKS Spiral Kit	SKB Bronze Kit
DAYTON		
300-263	SKS9606	SKB9606
300-264	SKS0793118	SKB0793118
300-265	SKS0893112	SKB0893112
300-266	SKS96112	SKB96112
300-267	SKS18005	SKB18005
300-268	SKS10209	SKB10209
300-269	SKS14009	SKB14009
300-270	SKS10809	SKB10809
300-271	SKS12009	SKB12009
300-273	SKS7106	SKB7106
300-274	SKS12005	SKB12005
300-275	SKS12105	SKB12105
300-276	SKS12009	SKB12009
300-277	SKS14119	SKB14119
300-278	SKS16019	SKB16019
300-279	SKS5607	SKB5607
300-280	SKS94106	SKB94106
300-281	SKS9420601	SKB9420601
300-282	SKS10209	SKB10209
300-283	SKS18005	SKB18005
300-284	SKS96112	SKB96112
300-285	SKS7106	SKB7106
300-286	SKS7606	SKB7606
300-287	SKS8007	SKB8007
300-288	SKS11007	SKB11007
300-289	SKS12007	SKB12007
300-290	SKS12222	SKB12222
300-291	SKS14022	SKB14022
300-292	SKS14606	SKB14606
300-293	SKS12205	SKB12205
300-294	SKS14605	SKB14605
300-295	SKS14605	SKB14605
300-296	SKS7004	SKB7004
300-297	SKS12205	SKB12205
300-298	SKS14619	SKB14619
300-299	SKS98118	SKB98118
300-300	SKS94206	SKB94206
300-303	SKS12305	SKB12305
300-305	SKS14705	SKB14705
300-306	SKS14705	SKB14705
300-307	SKS14605	SKB14605
300-310	SKS18018	SKB18018
300-312	SKS0894618	SKB0894618
300-314	SKS7018	SKB7018
300-316	SKS8018	SKB8018
300-317	SKS98118	SKB98118
300-318	SKS10319	SKB10319
300-319	SKS10319	SKB10319
300-324	SKS94118	SKB94118
300-325	SKS18005	SKB18005
300-329	SKS18118	SKB18118
300-330	SKS18118	SKB18118
300-332	SKS0793118	SKB0793118
300-334	SKS12018	SKB12018
300-336	SKS12108	SKB12108

Cross Reference	SKS Spiral Kit	SKB Bronze Kit
DODGE		
1643174	SKS12507	SKB12507
1692644	SKS5006	SKB5006
1818726	SKS0490118	SKB0490118
1843208	SKS7004	SKB7004
2808618	SKS90112	SKB90112
E-ONE		
513823	SKS0893112	SKB0893112
EATON		
316111	SKS12205	SKB12205
328342	SKS12205	SKB12205
328343	SKS14605	SKB14605
328344	SKS12205	SKB12205
328345	SKS14605	SKB14605
328346	SKS12305	SKB12305
328347	SKS14705	SKB14705
328348	SKS12305	SKB12305
328349	SKS14705	SKB14705
329022	SKS14119	SKB14119
329023	SKS16019	SKB16019
329116	SKS16219	SKB16219
329182	SKS10319	SKB10319
329404	SKS14605	SKB14605
329405	SKS14605	SKB14605
329432	SKS18005	SKB18005
329433	SKS18005	SKB18005
331434	SKS20019	SKB20019
331435	SKS20119	SKB20119
524530	SKS14605	SKB14605
806355	SKS12005	SKB12005
806356	SKS12105	SKB12105
811525	SKS18005	SKB18005
815984	SKS12005	SKB12005
823078	SKS12205	SKB12205
823946	SKS14605	SKB14605
824530	SKS14605	SKB14605
824920	SKS14605	SKB14605
1008431	SKS12005	SKB12005
1008500	SKS18005	SKB18005
806355B	SKS12005	SKB12005
EATON TOP SPEC		
KP2230	SKS53313	SKB53313
KP2262	SKS9809	SKB9809
KP2266	SKS12507	SKB12507
KP2268	SKS9507	SKB9507
KP2271	SKS12507	SKB12507
KP2272	SKS12023	SKB12023
KP2275	SKS90112	SKB90112
KP2276	SKS9507	SKB9507
KP2277	SKS5107	SKB5107
KP2278	SKS5107	SKB5107
KP2279	SKS7007	SKB7007
KP2280	SKS7007	SKB7007
KP2281	SKS5107	SKB5107
KP2283	SKS7006	SKB7006



SAME DAY SHIPPING



PLEASE CHECK AVAILABILITY pg 35

Cross Reference	SKS Spiral Kit	SKB Bronze Kit
EATON TOP SPEC		
KP2284	SKS7006	SKB7006
KP2285	SKS10909	SKB10909
KP2288	SKS0490118	SKB0490118
KP2289	SKS7004	SKB7004
KP2290	SKS7004	SKB7004
KP2291	SKS97018	SKB97018
KP2292	SKS90112	SKB90112
KP2293	SKS10909	SKB10909
KP2294	SKS0490118	SKB0490118
KP2296	SKS0890112	SKB0890112
KP2297	SKS0890112	SKB0890112
KP2298	SKS97018	SKB97018
KP2305	SKS92112	SKB92112
KP2311	SKS14009	SKB14009
KP2312	SKS14009	SKB14009
KP2313	SKS7506	SKB7506
KP2314	SKS0893112	SKB0893112
KP2315	SKS94106	SKB94106
KP2316	SKS9506	SKB9506
KP2317	SKS5507	SKB5507
KP2318	SKS5507	SKB5507
KP2319	SKS0535006	SKB0535006
KP2320	SKS10109	SKB10109
KP2321	SKS94106	SKB94106
KP2322	SKS10809	SKB10809
KP2323	SKS13909	SKB13909
KP2324	SKS13909	SKB13909
KP2325	SKS30909	SKB30909
KP2326	SKS30909	SKB30909
KP2327	SKS93112	SKB93112
KP2329	SKS53513	SKB53513
KP2330	SKS53313	SKB53313
KP2331	SKS12107	SKB12107
KP2333	SKS12623	SKB12623
KP2334	SKS12523	SKB12523
KP2336	SKS61613	SKB61613
KP2337	SKS31009	SKB31009
KP2338	SKS93112	SKB93112
KP2339	SKS97118	SKB97118
KP2340	SKS14009	SKB14009
KP2341	SKS12005	SKB12005
KP2342	SKS18005	SKB18005
KP2343	SKS0535006	SKB0535006
KP2344	SKS5006	SKB5006
KP2365	SKS13909	SKB13909
KP2748	SKS0893112	SKB0893112
KP2924	SKS0793118	SKB0793118
KP2983	SKS5006	SKB5006
KP2985	SKS5107	SKB5107
KP2987	SKS5507	SKB5507
KP2990	SKS7004	SKB7004
KP2991	SKS7006	SKB7006
KP2992	SKS7007	SKB7007
KP2994	SKS7506	SKB7506
KP2996	SKS9506	SKB9506

Cross Reference	SKS Spiral Kit	SKB Bronze Kit
EATON TOP SPEC		
KP2997	SKS9507	SKB9507
KP2998	SKS9809	SKB9809
KP3000	SKS10109	SKB10109
KP3001	SKS10809	SKB10809
KP3002	SKS10909	SKB10909
KP3004	SKS12005	SKB12005
KP3006	SKS12023	SKB12023
KP3007	SKS12107	SKB12107
KP3008	SKS12507	SKB12507
KP3009	SKS12523	SKB12523
KP3010	SKS12623	SKB12623
KP3011	SKS13909	SKB13909
KP3012	SKS14009	SKB14009
KP3014	SKS17007	SKB17007
KP3019	SKS30909	SKB30909
KP3020	SKS31009	SKB31009
KP3023	SKS0535006	SKB0535006
KP3026	SKS53313	SKB53313
KP3028	SKS53513	SKB53513
KP3030	SKS61613	SKB61613
KP3031	SKS0490018	SKB0490018
KP3032	SKS90112	SKB90112
KP3033	SKS0490118	SKB0490118
KP3034	SKS0890112	SKB0890112
KP3035	SKS92112	SKB92112
KP3037	SKS94106	SKB94106
KP3038	SKS93112	SKB93112
KP3039	SKS0893112	SKB0893112
KP3040	SKS97018	SKB97018
KP3041	SKS97118	SKB97118
KP3130	SKS12005	SKB12005
KP3133	SKS0793118	SKB0793118
KP3134	SKS5607	SKB5607
ELGIN		
KB325	SKS14009	SKB14009
KB325N	SKS14009	SKB14009
KB424	SKS10909	SKB10909
KB425	SKS10909	SKB10909
KB425CB	SKS10909	SKB10909
KB450	SKS12507	SKB12507
KB450A	SKS12507	SKB12507
KB450AN	SKS12507	SKB12507
KB458CB	SKS94106	SKB94106
KB459	SKS0490018	SKB0490018
KB462B	SKS5107	SKB5107
KB463	SKS9507	SKB9507
KB463N	SKS9507	SKB9507
KB465A	SKS0490118	SKB0490118
KB465AN	SKS0490118	SKB0490118
KB477A	SKS7004	SKB7004
KB477AN	SKS7004	SKB7004
KB477ANR	SKS7004	SKB7004
KB477AR	SKS7004	SKB7004
KB479X	SKS12023	SKB12023
KB491A	SKS5107	SKB5107

Cross Reference	SKS Spiral Kit	SKB Bronze Kit
ELGIN		
KB491AN	SKS5107	SKB5107
KB492	SKS7007	SKB7007
KB492A	SKS7007	SKB7007
KB492AN	SKS7007	SKB7007
KB493	SKS5006	SKB5006
KB504	SKS90112	SKB90112
KB504N	SKS90112	SKB90112
KB505A	SKS97018	SKB97018
KB505AN	SKS97018	SKB97018
KB516	SKS10909	SKB10909
KB525	SKS0535006	SKB0535006
KB534B	SKS92112	SKB92112
KB537	SKS7506	SKB7506
KB546	SKS9506	SKB9506
KB547	SKS0893112	SKB0893112
KB547CB	SKS0893112	SKB0893112
KB548	SKS94106	SKB94106
KB571	SKS7006	SKB7006
KB571N	SKS7006	SKB7006
KB571NR	SKS7006	SKB7006
KB571R	SKS7006	SKB7006
KB578	SKS7106	SKB7106
KB645	SKS10109	SKB10109
KB700	SKS0890112	SKB0890112
KB700N	SKS0890112	SKB0890112
KB722	SKS5507	SKB5507
KB722CB	SKS5507	SKB5507
KB722N	SKS5507	SKB5507
KB816	SKS10809	SKB10809
KB817	SKS13909	SKB13909
KB817N	SKS13909	SKB13909
KB818	SKS30909	SKB30909
KB818N	SKS30909	SKB30909
KB819	SKS9410601	SKB9410601
KB819CB	SKS9410601	SKB9410601
KB823	SKS93112	SKB93112
KB825	SKS0535006	SKB0535006
KB828	SKS53513	SKB53513
KB829BI	SKS53313	SKB53313
KB830	SKS12107	SKB12107
KB832	SKS12523	SKB12523
KB834	SKS61613	SKB61613
KB835	SKS31009	SKB31009
KB836	SKS0793118	SKB0793118
KB836CB	SKS0793118	SKB0793118
KB837	SKS97118	SKB97118
KB838	SKS12623	SKB12623
KB839	SKS93112	SKB93112
KB839CB	SKS93112	SKB93112
KB840	SKS14009	SKB14009
KB840CB	SKS14009	SKB14009
KB841CB	SKS12005	SKB12005
KB842CB	SKS12105	SKB12105
KB843	SKS7206	SKB7206
KB843CB	SKS7206	SKB7206



COMPETITIVE KIT INTERCHANGE

ELGIN - FLAGG

PLEASE CHECK AVAILABILITY pg 35

Cross Reference	SKS Spiral Kit	SKB Bronze Kit
ELGIN		
KB844	SKS94206	SKB94206
KB844CB	SKS94206	SKB94206
KB845	SKS9606	SKB9606
KB846CB	SKS18005	SKB18005
KB847	SKS10209	SKB10209
KB847CB	SKS10209	SKB10209
KB848CB	SKS96112	SKB96112
KB849	SKS12009	SKB12009
KB852	SKS11007	SKB11007
KB861	SKS14605	SKB14605
KB864	SKS9420601	SKB9420601
KB868	SKS14705	SKB14705
EUCLID		
E-10104B	SKS8007	SKB8007
E-10105B	SKS11007	SKB11007
E-10106B	SKS12007	SKB12007
E-10107B	SKS18005	SKB18005
E-10165N	SKS12222	SKB12222
E-10166N	SKS14022	SKB14022
E-11394B	SKS12205	SKB12205
E-11785	SKS16019	SKB16019
E-11808C	SKS98118	SKB98118
E-11812C	SKS8018	SKB8018
E-11813C	SKS18018	SKB18018
E-11814C	SKS18118	SKB18118
E-11816C	SKS7018	SKB7018
E-4430B	SKS5107	SKB5107
E-4431B	SKS9809	SKB9809
E-4434B	SKS12507	SKB12507
E-4434N	SKS12507	SKB12507
E-4435B	SKS9507	SKB9507
E-4435N	SKS9507	SKB9507
E-4438B	SKS7004	SKB7004
E-4438N	SKS7004	SKB7004
E-4440B	SKS5006	SKB5006
E-4441B	SKS0490118	SKB0490118
E-4441N	SKS0490118	SKB0490118
E-4442B	SKS90112	SKB90112
E-4442N	SKS90112	SKB90112
E-4443B	SKS7007	SKB7007
E-4443N	SKS7007	SKB7007
E-4444B	SKS5107	SKB5107
E-4444N	SKS5107	SKB5107
E-4445B	SKS7006	SKB7006
E-4445N	SKS7006	SKB7006
E-4446B	SKS10909	SKB10909
E-4448B	SKS10909	SKB10909
E-4449B	SKS97018	SKB97018
E-4449N	SKS97018	SKB97018
E-4450B	SKS92112	SKB92112
E-4451B	SKS14009	SKB14009
E-4451N	SKS14009	SKB14009
E-4452B	SKS7506	SKB7506
E-4453B	SKS5507	SKB5507
E-4453N	SKS5507	SKB5507

Cross Reference	SKS Spiral Kit	SKB Bronze Kit
EUCLID		
E-4454B	SKS0890112	SKB0890112
E-4454N	SKS0890112	SKB0890112
E-4457B	SKS9506	SKB9506
E-4458B	SKS0893112	SKB0893112
E-4458C	SKS0893112	SKB0893112
E-4459B	SKS94106	SKB94106
E-4459C	SKS94106	SKB94106
E-4460B	SKS10109	SKB10109
E-4461B	SKS10809	SKB10809
E-4462B	SKS13909	SKB13909
E-4462N	SKS13909	SKB13909
E-4463B	SKS30909	SKB30909
E-4463N	SKS30909	SKB30909
E-4464B	SKS9410601	SKB9410601
E-4466B	SKS53513	SKB53513
E-4467B	SKS53313	SKB53313
E-4468B	SKS93112	SKB93112
E-4469B	SKS12107	SKB12107
E-4470B	SKS12523	SKB12523
E-4471B	SKS12623	SKB12623
E-4595B	SKS97118	SKB97118
E-4598B	SKS12023	SKB12023
E-4599B	SKS61613	SKB61613
E-4693B	SKS14009	SKB14009
E-4694C	SKS93112	SKB93112
E-4695C	SKS0793118	SKB0793118
E-4696B	SKS12005	SKB12005
E-4696C	SKS12005	SKB12005
E-4697B	SKS31009	SKB31009
E-4698B	SKS13909	SKB13909
E-5441B	SKS0490018	SKB0490018
E-5485B	SKS7206	SKB7206
E-6194B	SKS18005	SKB18005
E-6195B	SKS7206	SKB7206
E-6196B	SKS94206	SKB94206
E-6197B	SKS9606	SKB9606
E-6198B	SKS10209	SKB10209
E-6199B	SKS96112	SKB96112
E-6199C	SKS96112	SKB96112
E-6450B	SKS0535006	SKB0535006
E-6451B	SKS0535006	SKB0535006
E-6454B	SKS5607	SKB5607
E-6455B	SKS7106	SKB7106
E-6868B	SKS0793118	SKB0793118
E-6869B	SKS12105	SKB12105
E-6869C	SKS12105	SKB12105
E-6875C	SKS14009	SKB14009
E-6876C	SKS10809	SKB10809
E-9312B	SKS90112	SKB90112
E-9941B	SKS12009	SKB12009
E-9942B	SKS14119	SKB14119
E-9943B	SKS7606	SKB7606
E-9944B	SKS94206	SKB94206
E-9945B	SKS14606	SKB14606

Cross Reference	SKS Spiral Kit	SKB Bronze Kit
FLAGG		
FKP-100-C	SKS0793118	SKB0793118
FKP-101-C	SKS12105	SKB12105
FKP-102-C	SKS5607	SKB5607
FKP-103-B	SKS7106	SKB7106
FKP-104-B	SKS7206	SKB7206
FKP-105-B	SKS94206	SKB94206
FKP-106-B	SKS9606	SKB9606
FKP-107-C	SKS94106	SKB94106
FKP-108-C	SKS94106	SKB94106
FKP-109-B	SKS18005	SKB18005
FKP-110-B	SKS10209	SKB10209
FKP-111-B	SKS96112	SKB96112
FKP-111-C	SKS96112	SKB96112
FKP-112-B	SKS10809	SKB10809
FKP-113-C	SKS14009	SKB14009
FKP-114-B	SKS5107	SKB5107
FKP-115-B	SKS12005	SKB12005
FKP-116-B	SKS12105	SKB12105
FKP-117-B	SKS5607	SKB5607
FKP-118-B	SKS12009	SKB12009
FKP-119-B	SKS14119	SKB14119
FKP-11-B	SKS12507	SKB12507
FKP-120-B	SKS7606	SKB7606
FKP-121-B	SKS8007	SKB8007
FKP-122-B	SKS11007	SKB11007
FKP-123-B	SKS12007	SKB12007
FKP-124B	SKS14606	SKB14606
FKP-125-C	SKS94206	SKB94206
FKP-126-C	SKS12222	SKB12222
FKP-127-C	SKS14022	SKB14022
FKP-128-C	SKS94206	SKB94206
FKP-129B	SKS9420601	SKB9420601
FKP-130-B	SKS16019	SKB16019
FKP-130-C	SKS16019	SKB16019
FKP-131-B	SKS12205	SKB12205
FKP-132-B	SKS14605	SKB14605
FKP-133-C	SKS14605	SKB14605
FKP-134-C	SKS14619	SKB14619
FKP-135-C	SKS13909	SKB13909
FKP-136-C	SKS98118	SKB98118
FKP-137-B	SKS12623	SKB12623
FKP-139-B	SKS12305	SKB12305
FKP-140-C	SKS0894618	SKB0894618
FKP-141-C	SKS18018	SKB18018
FKP-142-C	SKS8018	SKB8018
FKP-143-C	SKS7018	SKB7018
FKP-144-B	SKS14705	SKB14705
FKP-145-C	SKS10319	SKB10319
FKP-146-C	SKS94118	SKB94118
FKP-27-B	SKS9507	SKB9507
FKP-34-B	SKS7006	SKB7006
FKP-36-B	SKS5006	SKB5006
FKP-37-B	SKS90112	SKB90112
FKP-38-B	SKS5107	SKB5107
FKP-39-B	SKS7007	SKB7007



PLEASE CHECK AVAILABILITY pg 35

Cross Reference	SKS Spiral Kit	SKB Bronze Kit
FLAGG		
FKP-40-B	SKS5107	SKB5107
FKP-43-B	SKS7006	SKB7006
FKP-44-B	SKS10909	SKB10909
FKP-46-B	SKS7004	SKB7004
FKP-49-B	SKS97018	SKB97018
FKP-4-B	SKS5107	SKB5107
FKP-50-B	SKS90112	SKB90112
FKP-51-B	SKS10909	SKB10909
FKP-52-B	SKS0890112	SKB0890112
FKP-53-B	SKS0490118	SKB0490118
FKP-54-B	SKS7006	SKB7006
FKP-59-B	SKS12023	SKB12023
FKP-62-B	SKS92112	SKB92112
FKP-68-B	SKS14009	SKB14009
FKP-69-B	SKS7506	SKB7506
FKP-70-B	SKS5507	SKB5507
FKP-71-B	SKS0893112	SKB0893112
FKP-72-B	SKS94106	SKB94106
FKP-73-B	SKS9506	SKB9506
FKP-74-B	SKS0535006	SKB0535006
FKP-75-B	SKS10109	SKB10109
FKP-76-B	SKS10809	SKB10809
FKP-77-B	SKS13909	SKB13909
FKP-78-B	SKS30909	SKB30909
FKP-79-B	SKS9410601	SKB9410601
FKP-81-B	SKS0535006	SKB0535006
FKP-82-B	SKS9809	SKB9809
FKP-84-B	SKS53513	SKB53513
FKP-85-B	SKS53313	SKB53313
FKP-86-B	SKS12107	SKB12107
FKP-88-B	SKS12623	SKB12623
FKP-89-B	SKS12523	SKB12523
FKP-8-B	SKS9809	SKB9809
FKP-90-B	SKS93112	SKB93112
FKP-91-B	SKS31009	SKB31009
FKP-92-B	SKS0793118	SKB0793118
FKP-93-B	SKS97118	SKB97118
FKP-94-B	SKS61613	SKB61613
FKP-96-B	SKS14009	SKB14009
FKP-97-C	SKS93112	SKB93112
FKP-98-C	SKS12005	SKB12005
FKP-99-C	SKS0893112	SKB0893112
FLEETRITE		
FAK4444	SKS5107	SKB5107
FAK4446	SKS9809	SKB9809
FAK4454	SKS9507	SKB9507
FAK4460	SKS12023	SKB12023
FAK4461	SKS5006	SKB5006
FAK4465	SKS9507	SKB9507
FAK4467	SKS7007	SKB7007
FAK4468	SKS7007	SKB7007
FAK4469	SKS5107	SKB5107
FAK4470	SKS5107	SKB5107
FAK4471	SKS7006	SKB7006
FAK4472	SKS7006	SKB7006

Cross Reference	SKS Spiral Kit	SKB Bronze Kit
FLEETRITE		
FAK4474	SKS10909	SKB10909
FAK4477	SKS10909	SKB10909
FAK4485	SKS14009	SKB14009
FAK4487	SKS7506	SKB7506
FAK4488	SKS5507	SKB5507
FAK4489	SKS5507	SKB5507
FAK4492	SKS0535006	SKB0535006
FAK4493	SKS9506	SKB9506
FAK4494	SKS94106	SKB94106
FAK4495	SKS10109	SKB10109
FAK4497	SKS10809	SKB10809
FAK4498	SKS13909	SKB13909
FAK4500	SKS30909	SKB30909
FAK4504	SKS9410601	SKB9410601
FAK4505	SKS0535006	SKB0535006
FAK4507	SKS53513	SKB53513
FAK4508	SKS53313	SKB53313
FAK4509	SKS12107	SKB12107
FAK4510	SKS12523	SKB12523
FAK4511	SKS12623	SKB12623
FAK4514	SKS61613	SKB61613
FAK4516	SKS31009	SKB31009
FAK4517	SKS14009	SKB14009
FAK4518	SKS13909	SKB13909
FAK4524	SKS0490018	SKB0490018
FAK4526	SKS17007	SKB17007
FAK4527	SKS12507	SKB12507
FAK4529	SKS0490018	SKB0490018
FAK4530	SKS0490018	SKB0490018
FAK4531	SKS0490118	SKB0490118
FAK4532	SKS7004	SKB7004
FAK4533	SKS12507	SKB12507
FAK4536	SKS0490118	SKB0490118
FAK4537	SKS7004	SKB7004
FAK4538	SKS97018	SKB97018
FAK4539	SKS97018	SKB97018
FAK4540	SKS90112	SKB90112
FAK4541	SKS0890112	SKB0890112
FAK4542	SKS0890112	SKB0890112
FAK4544	SKS90112	SKB90112
FAK4546	SKS10909	SKB10909
FAK4548	SKS0490118	SKB0490118
FAK4549	SKS12507	SKB12507
FAK4550	SKS97018	SKB97018
FAK4551	SKS90112	SKB90112
FAK4552	SKS0890112	SKB0890112
FAK4553	SKS92112	SKB92112
FAK4555	SKS93112	SKB93112
FAK4558	SKS0893112	SKB0893112
FAK4559	SKS92112	SKB92112
FAK4560	SKS97118	SKB97118
FAK4561	SKS93112	SKB93112
FAK4564	SKS93112	SKB93112
FAK4566	SKS0793118	SKB0793118
FAK4567	SKS0793118	SKB0793118

Cross Reference	SKS Spiral Kit	SKB Bronze Kit
FLEETRITE		
FAK4568	SKS0893112	SKB0893112
FAK4569	SKS7004	SKB7004
FAK4570	SKS96112	SKB96112
FAK4571	SKS0890112	SKB0890112
FAK4572	SKS12005	SKB12005
FAK4573	SKS12105	SKB12105
FAK4574	SKS18005	SKB18005
FAK4580	SKS17007	SKB17007
FAK4582	SKS10209	SKB10209
FAK4583	SKS12005	SKB12005
FAK4584	SKS12105	SKB12105
FAK4585	SKS5107	SKB5107
FAK4586	SKS7206	SKB7206
FAK4587	SKS94206	SKB94206
FAK4588	SKS94106	SKB94106
FAK4589	SKS9606	SKB9606
FAK4590	SKS94106	SKB94106
FAK4594	SKS5607	SKB5607
FAK4596	SKS18005	SKB18005
FAK4598	SKS14119	SKB14119
FAK4599	SKS7606	SKB7606
FAK4600	SKS8007	SKB8007
FAK4601	SKS12009	SKB12009
FAK4603	SKS14606	SKB14606
FAK4604	SKS11007	SKB11007
FAK4605	SKS12007	SKB12007
FAK4606	SKS94206	SKB94206
FAK4609	SKS16019	SKB16019
FAK4610	SKS12205	SKB12205
FAK4614	SKS98118	SKB98118
FAK4626	SKS10319	SKB10319
FAK5444	SKS10109	SKB10109
FAK5446	SKS13909	SKB13909
FAK5447	SKS30909	SKB30909
FAK5451	SKS31009	SKB31009
FAK5452	SKS10109	SKB10109
FAK5453	SKS14009	SKB14009
FAK5454	SKS10209	SKB10209
FAK5455	SKS12009	SKB12009
FAK5456	SKS14119	SKB14119
FAK5457	SKS16019	SKB16019
FAK5459	SKS53613	SKB53613
FAK5465	SKS12009	SKB12009
FAK5466	SKS14119	SKB14119
FAK5500	SKS14705	SKB14705
FAK5506	SKS12205	SKB12205
FAK5507	SKS14705	SKB14705
FORD		
2C2Z-3111AA	SKS5023	SKB5023
4C40-3010-RA	SKS10319	SKB10319
4C40-3111BA	SKS10319	SKB10319
4C4Z-3111AA	SKS12009	SKB12009
4C4Z-3111AB	SKS14119	SKB14119
4C4Z-3111BB	SKS10319	SKB10319
4C4Z-3111CA	SKS12009	SKB12009



COMPETITIVE KIT INTERCHANGE

FORD - HD PLUS

PLEASE CHECK AVAILABILITY pg 35

Cross Reference	SKS Spiral Kit	SKB Bronze Kit
FORD		
B0Q-3111A	SKS0490018	SKB0490018
B7QH-3111A	SKS0490118	SKB0490118
B7QH-3111B	SKS7004	SKB7004
B7TZ-3111B	SKS7004	SKB7004
B7TZ-3111C	SKS12507	SKB12507
B7TZ-3111D	SKS0490118	SKB0490118
B7TZ-3111F	SKS7004	SKB7004
B7TZ-3111G	SKS0490118	SKB0490118
B8QH-3111B	SKS12507	SKB12507
BC4Z-3111E	SKS8018	SKB8018
C1TZ-3111C	SKS12507	SKB12507
C2TZ-3111B	SKS7004	SKB7004
C2TZ-3111C	SKS0490118	SKB0490118
C2TZ-3111D	SKS12507	SKB12507
C2TZ-3111F	SKS7004	SKB7004
C2TZ-3111G	SKS0490118	SKB0490118
C3TZ-3111A	SKS5006	SKB5006
C3TZ-3111B	SKS90112	SKB90112
C3TZ-3111C	SKS90112	SKB90112
C3TZ-3111D	SKS5006	SKB5006
C4TA-3010C	SKS5006	SKB5006
C4TA-3010E	SKS5006	SKB5006
C4TZ-3111A	SKS97018	SKB97018
C4TZ-3111B	SKS97018	SKB97018
C5TZ-3111B	SKS0890112	SKB0890112
C5TZ-3111D	SKS0890112	SKB0890112
C7HZ-3111A	SKS7006	SKB7006
C7TA-3010J	SKS7006	SKB7006
C7TA-3010Z	SKS0490118	SKB0490118
C7TZ-3111A	SKS7006	SKB7006
C9TA-3010D	SKS5006	SKB5006
C9TZ-3111C	SKS90112	SKB90112
D0HA-3010H	SKS90112	SKB90112
D0HZ-3111A	SKS0490118	SKB0490118
D0HZ-3111B	SKS90112	SKB90112
D0HZ-3111C	SKS97018	SKB97018
D0HZ-3111E	SKS0890112	SKB0890112
D1HT-3111B	SKS90112	SKB90112
D1HZ-3010AA	SKS0890112	SKB0890112
D1HZ-3111A	SKS0490118	SKB0490118
D1HZ-3111B	SKS90112	SKB90112
D1HZ-3111C	SKS90112	SKB90112
D1TZ-3111C	SKS90112	SKB90112
D2TZ-3111D	SKS5006	SKB5006
D3HA-3010AA	SKS0893106	SKB0893106
D3HA-3010KA	SKS0893106	SKB0893106
D3TZ-3111A	SKS7006	SKB7006
D5HZ-3111C	SKS0893106	SKB0893106
D5TZ-3111B	SKS7506	SKB7506
D5UZ-3111B	SKS0535006	SKB0535006
D5UZ-3111D	SKS0535006	SKB0535006
D6HZ-3111A	SKS94106	SKB94106
D6HZ-3111B	SKS9506	SKB9506
D6HZ-3111C	SKS94106	SKB94106
D6HZ-3111D	SKS9506	SKB9506

Cross Reference	SKS Spiral Kit	SKB Bronze Kit
FORD		
D6TZ-3111A	SKS7506	SKB7506
D7HT-3010RA	SKS94106	SKB94106
D7HT-3010UA	SKS5006	SKB5006
D7HZ-3111A	SKS0490118	SKB0490118
D7TZ-3111A	SKS7006	SKB7006
D8HZ-3111C	SKS9410601	SKB9410601
E0HT-3010AC	SKS7006	SKB7006
E0HT-3010CA	SKS7506	SKB7506
E0TZ-3111A	SKS0535006	SKB0535006
E2HT-3010AA	SKS90112	SKB90112
E2HT-3010BA	SKS94106	SKB94106
E2HT-3010DA	SKS9420601	SKB9420601
E4HT-3010CB	SKS7506	SKB7506
E7HT-3010AA	SKS9506	SKB9506
E7HT-3010BA	SKS9506	SKB9506
E7HT-3010EA	SKS94106	SKB94106
E7HT-3010HA	SKS7006	SKB7006
E7HT-3010SA	SKS0893106	SKB0893106
E7HT-3010TA	SKS94206	SKB94206
E7HZ-3010S	SKS94206	SKB94206
E7TZ-3111A	SKS7506	SKB7506
E8HZ-3111A	SKS7206	SKB7206
E8TA-3010A2C	SKS7106	SKB7106
E8TZ-3111A	SKS7106	SKB7106
E9HT-3010AA	SKS94206	SKB94206
E9HT-3010EA	SKS7006	SKB7006
E9HZ-3111A	SKS94206	SKB94206
E9HZ-3111B	SKS9606	SKB9606
E9HZ-3111C	SKS7606	SKB7606
F0HT-3010AA	SKS0893106	SKB0893106
F0HT-3010BA	SKS9606	SKB9606
F0HT-3010CA	SKS7206	SKB7206
F0HT-3010DA	SKS7206	SKB7206
F0HT-3010EA	SKS7606	SKB7606
F0HT-3010FA	SKS7606	SKB7606
F0HT-3010SA	SKS7606	SKB7606
F0HZ-3111A	SKS94206	SKB94206
F1HT-3010AA	SKS94206	SKB94206
F1HZ-3010A	SKS7606	SKB7606
F1HZ-3010C	SKS7606	SKB7606
F1HZ-3111A	SKS7206	SKB7206
F2HT-3010AA	SKS94206	SKB94206
F4HZ-3010D	SKS94206	SKB94206
F5HT-3010BA	SKS7206	SKB7206
F5HT-3010DA	SKS94206	SKB94206
F5HT-3010EA	SKS94206	SKB94206
F5HT-3010GA	SKS0893106	SKB0893106
F5HT-3010HA	SKS0893106	SKB0893106
F5HT-3010JA	SKS0893106	SKB0893106
F5HZ-3111A	SKS14606	SKB14606
F6HT-3010AB	SKS0893106	SKB0893106
F6HT-3010BA	SKS94206	SKB94206
F6HT-3010BB	SKS94206	SKB94206
F6HT-3010DB	SKS94206	SKB94206
F6HZ-3111AA	SKS94206	SKB94206

Cross Reference	SKS Spiral Kit	SKB Bronze Kit
FORD		
F6HZ-3111BB	SKS94206	SKB94206
F6HZ-3111CC	SKS9420601	SKB9420601
F6HZ-3111DB	SKS94206	SKB94206
F81-3010AA	SKS7206	SKB7206
F81A-3010CA	SKS7606	SKB7606
F81D-3010AA	SKS7206	SKB7206
F81Z-3010AA	SKS7206	SKB7206
F81Z-3010CA	SKS7606	SKB7606
L7HT-3010EA	SKS94106	SKB94106
FREIGHTLINER		
123	SKS12507	SKB12507
144	SKS12507	SKB12507
156	SKS97018	SKB97018
157	SKS97018	SKB97018
167	SKS90112	SKB90112
168	SKS0890112	SKB0890112
170	SKS0890112	SKB0890112
172	SKS90112	SKB90112
195	SKS93112	SKB93112
198	SKS0893112	SKB0893112
199	SKS92112	SKB92112
1300	SKS97118	SKB97118
1303	SKS97118	SKB97118
1307	SKS93112	SKB93112
1320	SKS7104	SKB7104
P6073300019KZ	SKS12001	SKB12001
P6073300119KZ	SKS12001	SKB12001
P6073300219KZ	SKS8001	SKB8001
P6073300319KZ	SKS8001	SKB8001
P6073300419KZ	SKS16001	SKB16001
P6073300519KZ	SKS16001	SKB16001
GILLIG		
82-11863-000	SKS0793118	SKB0793118
82-206-3800	SKS0793118	SKB0793118
82-283305	SKS0894618	SKB0894618
82-33422-000	SKS12205	SKB12205
82-90285-000	SKS0894618	SKB0894618
HD PLUS		
HKP2025	SKS9809	SKB9809
HKP2030	SKS12507	SKB12507
HKP2055	SKS9507	SKB9507
HKP2065	SKS5006	SKB5006
HKP2070	SKS90112	SKB90112
HKP2075	SKS5107	SKB5107
HKP2080	SKS7007	SKB7007
HKP2090	SKS5107	SKB5107
HKP2095	SKS7006	SKB7006
HKP2110	SKS7006	SKB7006
HKP2115	SKS97018	SKB97018
HKP2120	SKS90112	SKB90112
HKP2125	SKS0890112	SKB0890112
HKP2130	SKS0890112	SKB0890112
HKP2135	SKS0890112	SKB0890112
HKP2160	SKS92112	SKB92112
HKP2180	SKS14009	SKB14009



PLEASE CHECK AVAILABILITY pg 35

Cross Reference	SKS Spiral Kit	SKB Bronze Kit
HD PLUS		
HKP2185	SKS7506	SKB7506
HKP2190	SKS5507	SKB5507
HKP2200	SKS0893112	SKB0893112
HKP2205	SKS94106	SKB94106
HKP2210	SKS9506	SKB9506
HKP2220	SKS10109	SKB10109
HKP2230	SKS10809	SKB10809
HKP2235	SKS13909	SKB13909
HKP2245	SKS30909	SKB30909
HKP2250	SKS9410601	SKB9410601
HKP2270	SKS93112	SKB93112
HKP2275	SKS53513	SKB53513
HKP2280	SKS53313	SKB53313
HKP2285	SKS12623	SKB12623
HKP2295	SKS0793118	SKB0793118
HKP2300	SKS0793118	SKB0793118
HKP2305	SKS97118	SKB97118
HKP2310	SKS12107	SKB12107
HKP2315	SKS14009	SKB14009
HKP2320	SKS12005	SKB12005
HKP2335	SKS12105	SKB12105
HKP2340	SKS61613	SKB61613
HKP2345	SKS10209	SKB10209
HKP2350	SKS96112	SKB96112
HKP2355	SKS7206	SKB7206
HKP2360	SKS9606	SKB9606
HKP2365	SKS94206	SKB94206
HKP2370	SKS7004	SKB7004
HKP2375	SKS12005	SKB12005
HKP2380	SKS12105	SKB12105
HKP2390	SKS31009	SKB31009
HKP2400	SKS5607	SKB5607
HKP2635	SKS7004	SKB7004
HKP2640	SKS12023	SKB12023
HKP2660	SKS12507	SKB12507
HKP2665	SKS7007	SKB7007
HKP2670	SKS7007	SKB7007
HKP2685	SKS0490118	SKB0490118
HKP2690	SKS0490118	SKB0490118
HKP2695	SKS9507	SKB9507
HKP2730	SKS7004	SKB7004
HKP2735	SKS7007	SKB7007
HKP2740	SKS5107	SKB5107
HKP2745	SKS5107	SKB5107
HKP2750	SKS5107	SKB5107
HKP2815	SKS97018	SKB97018
HKP2840	SKS14009	SKB14009
HKP2855	SKS5507	SKB5507
HKP2860	SKS0890112	SKB0890112
HKP2875	SKS10109	SKB10109
HKP2880	SKS10109	SKB10109
HKP2885	SKS10209	SKB10209
HKP2890	SKS10809	SKB10809
HKP2895	SKS13909	SKB13909
HKP2900	SKS13909	SKB13909

Cross Reference	SKS Spiral Kit	SKB Bronze Kit
HD PLUS		
HKP2905	SKS13909	SKB13909
HKP2910	SKS30909	SKB30909
HKP2915	SKS30909	SKB30909
HKP2930	SKS93112	SKB93112
HKP2935	SKS12523	SKB12523
HKP2945	SKS12107	SKB12107
HKP2950	SKS31009	SKB31009
HKP2955	SKS31009	SKB31009
HKP2970	SKS0490118	SKB0490118
HKP2975	SKS93112	SKB93112
HKP2995	SKS0893112	SKB0893112
HKP3000	SKS94106	SKB94106
HKP3005	SKS18005	SKB18005
HKP3010	SKS18005	SKB18005
HKP3015	SKS10209	SKB10209
HKP3025	SKS96112	SKB96112
HKP3030	SKS96112	SKB96112
HKP3040	SKS10809	SKB10809
HKP3045	SKS9410601	SKB9410601
HKP3050	SKS12009	SKB12009
HKP3055	SKS12009	SKB12009
HKP3060	SKS14119	SKB14119
HKP3065	SKS9420601	SKB9420601
HKP3070	SKS7606	SKB7606
HKP3080	SKS12005	SKB12005
HKP3085	SKS12105	SKB12105
HKP3090	SKS14606	SKB14606
HKP3095	SKS18005	SKB18005
HKP3100	SKS8007	SKB8007
HKP3105	SKS11007	SKB11007
HKP3110	SKS12007	SKB12007
HKP3125	SKS14119	SKB14119
HKP3130	SKS94206	SKB94206
HKP3135	SKS9420601	SKB9420601
HKP3150	SKS16019	SKB16019
HKP3155	SKS12205	SKB12205
HKP3160	SKS14605	SKB14605
HKP3165	SKS14605	SKB14605
HKP3170	SKS13909	SKB13909
HKP3175	SKS18005	SKB18005
HKP3190	SKS12222	SKB12222
HKP3195	SKS10209	SKB10209
HKP3200	SKS16019	SKB16019
HKP3235	SKS5006	SKB5006
HKP3240	SKS90112	SKB90112
HKP3250	SKS10909	SKB10909
HKP3290	SKS10109	SKB10109
HKP3295	SKS13909	SKB13909
HKP3385	SKS98118	SKB98118
HKP3395	SKS14619	SKB14619
HKP3450	SKS14705	SKB14705
HKP3500	SKS18018	SKB18018
HENDRICKSON		
001434	SKS12723	SKB12723
002916	SKS12623	SKB12623

Cross Reference	SKS Spiral Kit	SKB Bronze Kit
HENDRICKSON		
003200	SKS12008	SKB12008
003270	SKS12008	SKB12008
006648	SKS13108	SKB13108
60961-040	SKS12108	SKB12108
IMT / INGERSOLL		
700040	SKS70020	SKB70020
ISUZU		
94058104	SKS6826	SKB6826
97782770	SKS6926	SKB6926
98438973	SKS6926	SKB6926
98443939	SKS6926	SKB6926
98448583	SKS6826	SKB6826
987441181	SKS6926	SKB6926
997723802	SKS6926	SKB6926
5-87830978-2	SKS6826	SKB6826
5-87830978-5	SKS6826	SKB6826
5-87831608-1	SKS6926	SKB6926
5-87832183-2	SKS6926	SKB6926
5-87832209-0	SKS6926	SKB6926
5-87832211	SKS6926	SKB6926
5-87832219-0	SKS6926	SKB6926
5-87832219-1	SKS6926	SKB6926
5-87832220-0	SKS6926	SKB6926
KENWORTH		
123	SKS12507	SKB12507
144	SKS12507	SKB12507
156	SKS97018	SKB97018
157	SKS97018	SKB97018
167	SKS90112	SKB90112
168	SKS0890112	SKB0890112
170	SKS0890112	SKB0890112
172	SKS90112	SKB90112
195	SKS93112	SKB93112
198	SKS0893112	SKB0893112
199	SKS92112	SKB92112
1300	SKS97118	SKB97118
1307	SKS93112	SKB93112
KGI		
579-1044	SKS1501107	SKB1501107
KA531	SKS2301107	SKB2301107
KIMBLE		
1170860	SKS12723	SKB12723
1170859	SKS12623	SKB12623
T41-12001-71	SKS14905	SKB14905
MACK		
195	SKS93112	SKB93112
198	SKS0893112	SKB0893112
205SQ12	SKS0890112	SKB0890112
205SQ15	SKS92112	SKB92112
250SQ11	SKS12507	SKB12507
301SQ28E	SKS53513	SKB53513
301SQ44	SKS0890112	SKB0890112
301SQ46A	SKS53513	SKB53513
301SQ46B	SKS53513	SKB53513
301SQ47B	SKS53313	SKB53313



COMPETITIVE KIT INTERCHANGE

MACK - NAVISTAR

PLEASE CHECK AVAILABILITY pg 35

Cross Reference	SKS Spiral Kit	SKB Bronze Kit
MACK		
301SQ47CP1	SKS53313	SKB53313
301SQ47D	SKS53313	SKB53313
301SQ47E	SKS53313	SKB53313
301SQ52	SKS61613	SKB61613
301SQ52A	SKS61613	SKB61613
301SQ53	SKS53613	SKB53613
312SQ46B	SKS53513	SKB53513
50.00.336305	SKS7513	SKB7513
MAN		
81.44205-6013	SKS12014	SKB12014
MCI BUS		
01-01-1017	SKS0894618	SKB0894618
01-01-1079	SKS0894618	SKB0894618
39470254-7	SKS96112	SKB96112
IJ-2-54	SKS0793118	SKB0793118
MITSUBISHI		
MC992486	SKS6021	SKB6021
MK703748	SKS6021	SKB6021
MOOG		
8343B	SKS5107	SKB5107
8355B	SKS9809	SKB9809
8375B	SKS9809	SKB9809
8375T	SKS9809	SKB9809
8386B	SKS12507	SKB12507
8386N	SKS12507	SKB12507
8400B	SKS0490018	SKB0490018
8400N	SKS0490018	SKB0490018
8460B	SKS0490118	SKB0490118
8460N	SKS0490118	SKB0490118
8462B	SKS9507	SKB9507
8462N	SKS9507	SKB9507
8464B	SKS5107	SKB5107
8467	SKS7004	SKB7004
8476B	SKS12023	SKB12023
8478B	SKS53513	SKB53513
8479B	SKS7004	SKB7004
8479N	SKS7004	SKB7004
8483B	SKS97018	SKB97018
8483N	SKS97018	SKB97018
8484T	SKS5107	SKB5107
8486T	SKS7007	SKB7007
8488B	SKS5006	SKB5006
8489B	SKS90112	SKB90112
8489N	SKS90112	SKB90112
8490T	SKS5107	SKB5107
8491B	SKS7007	SKB7007
8491N	SKS7007	SKB7007
8492B	SKS5107	SKB5107
8492N	SKS5107	SKB5107
8493N	SKS7006	SKB7006
8500B	SKS7006	SKB7006
8500F	SKS7006	SKB7006
8500N	SKS7006	SKB7006
8502B	SKS10909	SKB10909
8504B	SKS0490118	SKB0490118

Cross Reference	SKS Spiral Kit	SKB Bronze Kit
MOOG		
8507B	SKS7004	SKB7004
8507N	SKS7004	SKB7004
8509B	SKS0535006	SKB0535006
8514B	SKS97018	SKB97018
8514N	SKS97018	SKB97018
8515B	SKS90112	SKB90112
8515N	SKS90112	SKB90112
8518B	SKS0890112	SKB0890112
8518N	SKS0890112	SKB0890112
8519B	SKS0490118	SKB0490118
8519N	SKS0490118	SKB0490118
8520B	SKS7006	SKB7006
8525B	SKS5006	SKB5006
8527B	SKS12023	SKB12023
8536B	SKS12507	SKB12507
8536N	SKS12507	SKB12507
8553B	SKS92112	SKB92112
8567B	SKS14009	SKB14009
8567N	SKS14009	SKB14009
8568B	SKS7506	SKB7506
8570B	SKS5507	SKB5507
8570N	SKS5507	SKB5507
8571B	SKS0893112	SKB0893112
8571C	SKS0893112	SKB0893112
8572B	SKS94106	SKB94106
8572C	SKS94106	SKB94106
8573B	SKS9506	SKB9506
8574B	SKS0535006	SKB0535006
8577B	SKS10109	SKB10109
8578B	SKS7004	SKB7004
8579B	SKS10809	SKB10809
8581B	SKS13909	SKB13909
8581N	SKS13909	SKB13909
8583B	SKS30909	SKB30909
8583N	SKS30909	SKB30909
8585B	SKS9410601	SKB9410601
8585C	SKS9410601	SKB9410601
8589B	SKS0535006	SKB0535006
8590B	SKS93112	SKB93112
8591B	SKS9809	SKB9809
8591N	SKS9809	SKB9809
8593B	SKS53513	SKB53513
8600B	SKS11007	SKB11007
8601B	SKS53313	SKB53313
8603B	SKS12107	SKB12107
8605B	SKS12623	SKB12623
8607B	SKS12523	SKB12523
8609B	SKS5006	SKB5006
8610B	SKS31009	SKB31009
8611B	SKS93112	SKB93112
8611C	SKS93112	SKB93112
8612B	SKS97118	SKB97118
8613B	SKS12107	SKB12107
8615B	SKS61613	SKB61613
8616C	SKS93112	SKB93112

Cross Reference	SKS Spiral Kit	SKB Bronze Kit
MOOG		
8617B	SKS14009	SKB14009
8618C	SKS12005	SKB12005
8627B	SKS5607	SKB5607
8627C	SKS5607	SKB5607
8629C	SKS7106	SKB7106
8631C	SKS12105	SKB12105
8633C	SKS18005	SKB18005
8635C	SKS0793118	SKB0793118
8637B	SKS10209	SKB10209
8639B	SKS7206	SKB7206
8641B	SKS9606	SKB9606
8643B	SKS94206	SKB94206
8645B	SKS10809	SKB10809
8647B	SKS12005	SKB12005
8653B	SKS7606	SKB7606
8655B	SKS12009	SKB12009
8659B	SKS8007	SKB8007
8660B	SKS11007	SKB11007
8661B	SKS12007	SKB12007
80063B	SKS96112	SKB96112
80074B	SKS16019	SKB16019
80076B	SKS12205	SKB12205
80077B	SKS14605	SKB14605
NAVISTAR		
139994R91	SKS0490018	SKB0490018
151007R91	SKS0490118	SKB0490118
155932R92	SKS12507	SKB12507
1648204C91	SKS10109	SKB10109
1651921C91	SKS12005	SKB12005
1658394C91	SKS31009	SKB31009
1658934C91	SKS14009	SKB14009
1658964C91	SKS93112	SKB93112
1659687C91	SKS12009	SKB12009
1659688C91	SKS12009	SKB12009
1659934C92	SKS14009	SKB14009
1660271C91	SKS10209	SKB10209
1662305C91	SKS12507	SKB12507
1662306C91	SKS92112	SKB92112
1665531C91	SKS96112	SKB96112
1668405C91	SKS16019	SKB16019
1668411C91	SKS12009	SKB12009
1668411C92	SKS12009	SKB12009
1668412C91	SKS14119	SKB14119
1668412C92	SKS14119	SKB14119
1685405C91	SKS16019	SKB16019
229265R91	SKS97018	SKB97018
2500542C91	SKS98118	SKB98118
2505823C91	SKS12018	SKB12018
2505492C91	SKS96112	SKB96112
2505494C91	SKS96112	SKB96112
2505495C91	SKS18018	SKB18018
2505496C91	SKS18118	SKB18118
2505823C91	SKS12018	SKB12018
2603340C91	SKS0793118	SKB0793118
2612737C1	SKS10319	SKB10319



PLEASE CHECK AVAILABILITY pg 35

Cross Reference	SKS Spiral Kit	SKB Bronze Kit
NAVISTAR		
303136C91	SKS0490118	SKB0490118
303136C92	SKS0490118	SKB0490118
303137C92	SKS12507	SKB12507
303138C92	SKS97018	SKB97018
303138R92	SKS97018	SKB97018
303139C92	SKS90112	SKB90112
303140C91	SKS0890112	SKB0890112
303140C92	SKS0890112	SKB0890112
303140C93	SKS0890112	SKB0890112
306920C91	SKS10909	SKB10909
306920C92	SKS10909	SKB10909
3532356C91	SKS12009	SKB12009
3545386C92	SKS12009	SKB12009
3564519C91	SKS10319	SKB10319
3573204C91	SKS10319	SKB10319
3573205C91	SKS10319	SKB10319
371416C91	SKS97018	SKB97018
399942C93	SKS14009	SKB14009
408547C91	SKS10909	SKB10909
408547C93	SKS10909	SKB10909
452344C91	SKS92112	SKB92112
470572C91	SKS30909	SKB30909
470752C91	SKS30909	SKB30909
472093C91	SKS10909	SKB10909
472094C91	SKS13909	SKB13909
472095C91	SKS10109	SKB10109
473695C91	SKS10109	SKB10109
474520C91	SKS0893112	SKB0893112
491611C91	SKS13909	SKB13909
491611C92	SKS13909	SKB13909
493092C91	SKS10809	SKB10809
493094C91	SKS13909	SKB13909
493094C92	SKS13909	SKB13909
493095C91	SKS30909	SKB30909
507838C91	SKS93112	SKB93112
549800C91	SKS93112	SKB93112
577684C91	SKS97118	SKB97118
579370C92	SKS31009	SKB31009
586806C91	SKS31009	SKB31009
588808C91	SKS14009	SKB14009
590831C91	SKS14009	SKB14009
591945C91	SKS10909	SKB10909
597258C91	SKS0893112	SKB0893112
597556C91	SKS93112	SKB93112
61556R91	SKS9809	SKB9809
69576R92	SKS12507	SKB12507
870148R91	SKS90112	SKB90112
870148R92	SKS90112	SKB90112
966157R91	SKS0890112	SKB0890112
966157R92	SKS0890112	SKB0890112
974021R91	SKS12507	SKB12507
NEO PLAN		
KL0800000-025	SKS16219	SKB16219
NEW FLYER		
6313078	SKS12014	SKB12014
6330169	SKS0894618	SKB0894618

Cross Reference	SKS Spiral Kit	SKB Bronze Kit
NEW STAR S & S		
S-3596	SKS10809	SKB10809
S-3682	SKS5507	SKB5507
S-4483	SKS12009	SKB12009
S-4948	SKS13909	SKB13909
S-4949	SKS30909	SKB30909
S-4988	SKS14009	SKB14009
S-4996	SKS9809	SKB9809
S-5134	SKS31009	SKB31009
S-5223	SKS10109	SKB10109
S-6072	SKS53313	SKB53313
S-6073	SKS61613	SKB61613
S-6485	SKS12005	SKB12005
S-6486	SKS12105	SKB12105
S-6488	SKS7006	SKB7006
S-6492	SKS7004	SKB7004
S-6494	SKS7006	SKB7006
S-6501	SKS0535006	SKB0535006
S-6502	SKS94106	SKB94106
S-6503	SKS9506	SKB9506
S-6504	SKS7506	SKB7506
S-6634	SKS5107	SKB5107
S-6635	SKS7007	SKB7007
S-6643	SKS12107	SKB12107
S-6663	SKS10909	SKB10909
S-6938	SKS0490118	SKB0490118
S-6939	SKS12507	SKB12507
S-6942	SKS97018	SKB97018
S-6943	SKS97018	SKB97018
S-6944	SKS90112	SKB90112
S-6945	SKS0890112	SKB0890112
S-6946	SKS0890112	SKB0890112
S-6947	SKS90112	SKB90112
S-6948	SKS93112	SKB93112
S-6949	SKS0893112	SKB0893112
S-6950	SKS92112	SKB92112
S-6963	SKS97118	SKB97118
S-6964	SKS93112	SKB93112
S-6965	SKS0793118	SKB0793118
S-7190	SKS12023	SKB12023
S-7191	SKS12623	SKB12623
S-7463	SKS14009	SKB14009
S-7721	SKS7007	SKB7007
S-7801	SKS14009	SKB14009
S-8371	SKS12005	SKB12005
S-8513	SKS0793118	SKB0793118
S-8529	SKS0893112	SKB0893112
S-8678	SKS96112	SKB96112
S-9304	SKS10209	SKB10209
S-9365	SKS18005	SKB18005
S-9722	SKS5507	SKB5507
S-A482	SKS10209	SKB10209
S-A483	SKS12009	SKB12009
S-A484	SKS14119	SKB14119

Cross Reference	SKS Spiral Kit	SKB Bronze Kit
NEW STAR S & S		
S-A811	SKS12009	SKB12009
S-C119	SKS98118	SKB98118
S-C464	SKS12205	SKB12205
S-D562	SKS12205	SKB12205
S-D819	SKS12007	SKB12007
S-F091	SKS8007	SKB8007
S-F092	SKS11007	SKB11007
S-F187	SKS18005	SKB18005
OTTAWA		
90013937	SKS96112	SKB96112
PETERBILT		
123	SKS12507	SKB12507
144	SKS12507	SKB12507
156	SKS97018	SKB97018
157	SKS97018	SKB97018
167	SKS90112	SKB90112
168	SKS0890112	SKB0890112
170	SKS0890112	SKB0890112
172	SKS90112	SKB90112
195	SKS93112	SKB93112
198	SKS0893112	SKB0893112
199	SKS92112	SKB92112
1300	SKS97118	SKB97118
1303	SKS97118	SKB97118
RIDEWELL		
1660106	SKS0793118	SKB0793118
1667325B034	SKS12723	SKB12723
ROCKWELL		
17110	SKS0793118	SKB0793118
17111	SKS0793118	SKB0793118
R200001	SKS5107	SKB5107
R200003	SKS9809	SKB9809
R200011	SKS9507	SKB9507
R200017	SKS12023	SKB12023
R200018	SKS5006	SKB5006
R200022	SKS9507	SKB9507
R200024	SKS7007	SKB7007
R200025	SKS7007	SKB7007
R200026	SKS5107	SKB5107
R200027	SKS5107	SKB5107
R200028	SKS7006	SKB7006
R200029	SKS7006	SKB7006
R200031	SKS10909	SKB10909
R200034	SKS10909	SKB10909
R200042	SKS14009	SKB14009
R200043	SKS14009	SKB14009
R200044	SKS7506	SKB7506
R200045	SKS5507	SKB5507
R200046	SKS5507	SKB5507
R200049	SKS0535006	SKB0535006
R200050	SKS9506	SKB9506
R200051	SKS94106	SKB94106
R200052	SKS10109	SKB10109
R200054	SKS10809	SKB10809
R200055	SKS13909	SKB13909



COMPETITIVE KIT INTERCHANGE

ROCKWELL - SPICER

PLEASE CHECK AVAILABILITY pg 35

Cross Reference	SKS Spiral Kit	SKB Bronze Kit
ROCKWELL		
R200056	SKS13909	SKB13909
R200057	SKS30909	SKB30909
R200058	SKS30909	SKB30909
R200061	SKS9410601	SKB9410601
R200062	SKS0535006	SKB0535006
R200064	SKS53513	SKB53513
R200065	SKS53313	SKB53313
R200066	SKS12107	SKB12107
R200067	SKS12523	SKB12523
R200068	SKS12623	SKB12623
R200071	SKS61613	SKB61613
R200073	SKS31009	SKB31009
R200074	SKS14009	SKB14009
R200075	SKS13909	SKB13909
R200121	SKS17007	SKB17007
R200123	SKS12507	SKB12507
R200136	SKS0490018	SKB0490018
R200138	SKS0490118	SKB0490118
R200141	SKS0490018	SKB0490018
R200142	SKS0490118	SKB0490118
R200143	SKS7004	SKB7004
R200144	SKS12507	SKB12507
R200145	SKS17007	SKB17007
R200152	SKS12507	SKB12507
R200154	SKS0490118	SKB0490118
R200155	SKS7004	SKB7004
R200156	SKS97018	SKB97018
R200157	SKS97018	SKB97018
R200163	SKS90112	SKB90112
R200167	SKS90112	SKB90112
R200168	SKS0890112	SKB0890112
R200170	SKS0890112	SKB0890112
R200172	SKS90112	SKB90112
R200174	SKS10909	SKB10909
R200184	SKS0490118	SKB0490118
R200186	SKS12507	SKB12507
R200188	SKS97018	SKB97018
R200189	SKS0890112	SKB0890112
R200190	SKS90112	SKB90112
R200191	SKS0890112	SKB0890112
R200193	SKS92112	SKB92112
R200195	SKS93112	SKB93112
R200198	SKS0893112	SKB0893112
R200199	SKS92112	SKB92112
R200234	SKS0490018	SKB0490018
R200250	SKS18005	SKB18005
R200251	SKS12105	SKB12105
R200267	SKS12005	SKB12005
R200268	SKS10209	SKB10209
R200269	SKS12005	SKB12005
R200270	SKS12105	SKB12105
R200271	SKS5107	SKB5107
R200272	SKS7206	SKB7206
R200273	SKS94206	SKB94206
R200274	SKS94106	SKB94106

Cross Reference	SKS Spiral Kit	SKB Bronze Kit
ROCKWELL		
R200275	SKS9606	SKB9606
R200276	SKS94106	SKB94106
R200277	SKS10809	SKB10809
R200278	SKS14009	SKB14009
R200279	SKS16019	SKB16019
R200280	SKS7606	SKB7606
R200281	SKS12205	SKB12205
R200282	SKS8007	SKB8007
R200283	SKS11007	SKB11007
R200284	SKS12007	SKB12007
R200285	SKS0893112	SKB0893112
R2002916	SKS12723	SKB12723
R200300	SKS5607	SKB5607
R201300	SKS97118	SKB97118
R201303	SKS97018	SKB97018
R201307	SKS93112	SKB93112
R201309	SKS0793118	SKB0793118
R201310	SKS0793118	SKB0793118
R201312	SKS0893112	SKB0893112
R201314	SKS7004	SKB7004
R201315	SKS96112	SKB96112
R201318	SKS94118	SKB94118
R201319	SKS0793118	SKB0793118
R201320	SKS7104	SKB7104
R201370	SKS93112	SKB93112
R201419	SKS98118	SKB98118
R201420	SKS0894618	SKB0894618
R201424	SKS0894618	SKB0894618
R201425	SKS0793118	SKB0793118
R201426	SKS12009	SKB12009
R201427	SKS14119	SKB14119
R201470	SKS96112	SKB96112
R201471	SKS0793118	SKB0793118
R201472	SKS98118	SKB98118
R201473	SKS12018	SKB12018
R201474	SKS8018	SKB8018
R201475	SKS18018	SKB18018
R201476	SKS18118	SKB18118
R201477	SKS0893112	SKB0893112
R201478	SKS6018	SKB6018
R201479	SKS7018	SKB7018
R201483	SKS7018	SKB7018
R201484	SKS8018	SKB8018
R201490	SKS98118	SKB98118
R201600	SKS5607	SKB5607
R201601	SKS7106	SKB7106
R201602	SKS5607	SKB5607
R201604	SKS8018	SKB8018
R201605	SKS8018	SKB8018
R201606	SKS8018	SKB8018
SEALED POWER		
808-391C	SKS5107	SKB5107
808-401N	SKS9809	SKB9809
808-463	SKS9507	SKB9507
808-477	SKS7004	SKB7004

Cross Reference	SKS Spiral Kit	SKB Bronze Kit
SEALED POWER		
808-479	SKS12023	SKB12023
808-489	SKS12507	SKB12507
808-492	SKS7007	SKB7007
808-493	SKS5006	SKB5006
808-496	SKS0490118	SKB0490118
808-496B	SKS0490118	SKB0490118
808-499	SKS9507	SKB9507
808-503	SKS7004	SKB7004
808-504	SKS90112	SKB90112
808-506	SKS7007	SKB7007
808-506B	SKS7007	SKB7007
808-507	SKS5107	SKB5107
808-507B	SKS5107	SKB5107
808-509	SKS7006	SKB7006
808-509B	SKS7006	SKB7006
808-510B	SKS90112	SKB90112
808-516	SKS10909	SKB10909
808-524B	SKS10909	SKB10909
808-526B	SKS97018	SKB97018
808-526D	SKS97018	SKB97018
808-534B	SKS92112	SKB92112
808-535B	SKS14009	SKB14009
808-535D	SKS14009	SKB14009
808-538	SKS7506	SKB7506
808-538B	SKS7506	SKB7506
808-539	SKS5507	SKB5507
808-539D	SKS5507	SKB5507
808-540B	SKS5507	SKB5507
808-541B	SKS0890112	SKB0890112
808-542D	SKS0890112	SKB0890112
808-545B	SKS0535006	SKB0535006
808-546B	SKS9506	SKB9506
808-547B	SKS0893112	SKB0893112
808-548B	SKS94106	SKB94106
808-549B	SKS10109	SKB10109
808-551B	SKS10809	SKB10809
808-552B	SKS13909	SKB13909
808-553D	SKS13909	SKB13909
808-554B	SKS30909	SKB30909
808-555D	SKS30909	SKB30909
808-558B	SKS94106	SKB94106
808-559B	SKS0535006	SKB0535006
808-561B	SKS53513	SKB53513
808-562B	SKS53313	SKB53313
808-563B	SKS93112	SKB93112
808-564B	SKS12623	SKB12623
808-565B	SKS12523	SKB12523
808-567B	SKS12107	SKB12107
808-570B	SKS97118	SKB97118
SPICER		
328342	SKS12205	SKB12205
328343	SKS14605	SKB14605
328344	SKS12205	SKB12205
328345	SKS14605	SKB14605
328346	SKS12305	SKB12305



PLEASE CHECK AVAILABILITY pg 35

Cross Reference	SKS Spiral Kit	SKB Bronze Kit
SPICER		
328347	SKS14705	SKB14705
328348	SKS12305	SKB12305
328349	SKS14705	SKB14705
329022	SKS14119	SKB14119
329023	SKS16019	SKB16019
329116	SKS16219	SKB16219
329182	SKS10319	SKB10319
329404	SKS14605	SKB14605
329405	SKS14605	SKB14605
329432	SKS18005	SKB18005
331434	SKS20019	SKB20019
331435	SKS20119	SKB20119
503701	SKS14705	SKB14705
806355	SKS12005	SKB12005
811525	SKS18005	SKB18005
101KK100	SKS10109	SKB10109
101KK109	SKS10109	SKB10109
101KK110	SKS10109	SKB10109
101KK111	SKS10209	SKB10209
101KK113	SKS10109	SKB10109
120KK100	SKS12009	SKB12009
120KK102	SKS14619	SKB14619
140KK100	SKS14119	SKB14119
151KK101	SKS16019	SKB16019
161KK100	SKS16119	SKB16119
220KK100	SKS16019	SKB16019
309KK102	SKS31009	SKB31009
309KK103	SKS31009	SKB31009
309KK105	SKS14009	SKB14009
337KK100	SKS30909	SKB30909
337KK101	SKS13909	SKB13909
337KK103	SKS30909	SKB30909
337KK104	SKS13909	SKB13909
343KK100	SKS14009	SKB14009
KPK1001	SKS12108	SKB12108
KPK1002	SKS12001	SKB12001
KPK1003	SKS12001	SKB12001
KPK1004	SKS16001	SKB16001
KPK1005	SKS16001	SKB16001
KPK1006	SKS4004	SKB4004
KPK1007	SKS5004	SKB5004
KPK1008	SKS7004	SKB7004
KPK1014	SKS5004	SKB5004
KPK1015	SKS5004	SKB5004
KPK1020	SKS17007	SKB17007
KPK1025	SKS7006	SKB7006
KPK1026	SKS7006	SKB7006
KPK1029	SKS7004	SKB7004
KPK1030	SKS90112	SKB90112
KPK1042	SKS94106	SKB94106
KPK1043	SKS94106	SKB94106
KPK1044	SKS9506	SKB9506
KPK1045	SKS0535006	SKB0535006
KPK1046	SKS9410601	SKB9410601
KPK1047	SKS0535006	SKB0535006

Cross Reference	SKS Spiral Kit	SKB Bronze Kit
SPICER		
KPK1051	SKS7106	SKB7106
KPK1052	SKS7206	SKB7206
KPK1053	SKS94206	SKB94206
KPK1054	SKS9606	SKB9606
KPK1055	SKS94106	SKB94106
KPK1056	SKS7106	SKB7106
KPK1057	SKS7606	SKB7606
KPK1058	SKS9420601	SKB9420601
KPK1062	SKS9507	SKB9507
KPK1063	SKS9507	SKB9507
KPK1067	SKS7007	SKB7007
KPK1068	SKS8018	SKB8018
KPK1069	SKS7007	SKB7007
KPK1073	SKS5507	SKB5507
KPK1075	SKS5507	SKB5507
KPK1076	SKS31009	SKB31009
KPK1077	SKS12107	SKB12107
KPK1078	SKS97118	SKB97118
KPK1080	SKS5607	SKB5607
KPK1082	SKS5607	SKB5607
KPK1083	SKS8007	SKB8007
KPK1084	SKS11007	SKB11007
KPK1085	SKS12007	SKB12007
KPK1086	SKS98118	SKB98118
KPK1088	SKS90112	SKB90112
KPK1089	SKS10909	SKB10909
KPK1092	SKS97018	SKB97018
KPK1093	SKS10909	SKB10909
KPK1094	SKS14009	SKB14009
KPK1095	SKS10809	SKB10809
KPK1096	SKS13909	SKB13909
KPK1097	SKS30909	SKB30909
KPK1098	SKS98118	SKB98118
KPK1102	SKS10809	SKB10809
KPK1105	SKS53513	SKB53513
KPK1106	SKS53313	SKB53313
KPK1108	SKS61613	SKB61613
KPK1109	SKS53613	SKB53613
KPK1110	SKS12507	SKB12507
KPK1111	SKS0490118	SKB0490118
KPK1112	SKS0890112	SKB0890112
KPK1113	SKS0890112	SKB0890112
KPK1114	SKS97018	SKB97018
KPK1115	SKS92112	SKB92112
KPK1116	SKS0893112	SKB0893112
KPK1117	SKS93112	SKB93112
KPK1118	SKS0793118	SKB0793118
KPK1119	SKS93112	SKB93112
KPK1120	SKS0793118	SKB0793118
KPK1121	SKS0893112	SKB0893112
KPK1122	SKS96112	SKB96112
KPK1123	SKS96112	SKB96112
KPK1124	SKS18018	SKB18018
KPK1128	SKS12023	SKB12023
KPK1130	SKS12623	SKB12623

Cross Reference	SKS Spiral Kit	SKB Bronze Kit
SPICER		
KPK1131	SKS12523	SKB12523
KPK1134	SKS14009	SKB14009
KPK1136	SKS10109	SKB10109
KPK1147	SKS0490018	SKB0490018
KPK1148	SKS12105	SKB12105
STEMCO KAISER		
K101I	SKS10109	SKB10109
K102I	SKS10209	SKB10209
K103S	SKS10319	SKB10319
K108I	SKS10809	SKB10809
K109I	SKS10909	SKB10909
K120E	SKS12005	SKB12005
K120I	SKS12009	SKB12009
K120R	SKS12018	SKB12018
K121E	SKS12105	SKB12105
K121G	SKS12107	SKB12107
K122E	SKS12205	SKB12205
K123E	SKS12305	SKB12305
K125G	SKS12507	SKB12507
K125W	SKS12523	SKB12523
K126W	SKS12623	SKB12623
K127W	SKS12723	SKB12723
K139I	SKS13909	SKB13909
K140I	SKS14009	SKB14009
K141S	SKS14119	SKB14119
K146E	SKS14605	SKB14605
K147E	SKS14705	SKB14705
K160S	SKS16019	SKB16019
K180E	SKS18005	SKB18005
K180R	SKS18018	SKB18018
K181R	SKS18118	SKB18118
K309I	SKS30909	SKB30909
K310I	SKS31009	SKB31009
K50F	SKS5006	SKB5006
K51G	SKS5107	SKB5107
K533M	SKS53313	SKB53313
K55G	SKS5507	SKB5507
K56G	SKS5607	SKB5607
K616M	SKS61613	SKB61613
K68Z	SKS6826	SKB6826
K69Z	SKS6926	SKB6926
K70D	SKS7004	SKB7004
K70F	SKS7006	SKB7006
K70G	SKS7007	SKB7007
K70R	SKS7018	SKB7018
K70D	SKS7004	SKB7004
K71F	SKS7106	SKB7106
K72F	SKS7206	SKB7206
K75F	SKS7506	SKB7506
K76F	SKS7606	SKB7606
K80R	SKS8018	SKB8018
K901L	SKS90112	SKB90112
K921L	SKS92112	SKB92112
K931L	SKS93112	SKB93112
K941F	SKS94106	SKB94106



COMPETITIVE KIT INTERCHANGE

STEMCO / KAISER - TRW

PLEASE CHECK AVAILABILITY pg 35

Cross Reference	SKS Spiral Kit	SKB Bronze Kit
STEMCO KAISER		
K941R	SKS94118	SKB94118
K942F	SKS94206	SKB94206
K95F	SKS9506	SKB9506
K95G	SKS9507	SKB9507
K961L	SKS96112	SKB96112
K96F	SKS9606	SKB9606
K970R	SKS97018	SKB97018
K971R	SKS97118	SKB97118
K981R	SKS98118	SKB98118
K98I	SKS9809	SKB9809
KD901R	SKS0490118	SKB0490118
KE350F	SKS0535006	SKB0535006
KG931R	SKS0793118	SKB0793118
KH901L	SKS0890112	SKB0890112
KH931F	SKS0893106	SKB0893106
KH931L	SKS0893112	SKB0893112
KH946R	SKS0894618	SKB0894618
THOMAS BUS		
8314171	SKS10209	SKB10209
1307	SKS93112	SKB93112
1309	SKS0793118	SKB0793118
1310	SKS0793118	SKB0793118
P6073300019KZ	SKS12001	SKB12001
P6073300119KZ	SKS12001	SKB12001
TRAYER / ROAD LEVELER		
TK257	SKS9809	SKB9809
TK331	SKS5107	SKB5107
TK331B	SKS5107	SKB5107
TK336	SKS9809	SKB9809
TK406	SKS9507	SKB9507
TK407	SKS0490018	SKB0490018
TK422	SKS12507	SKB12507
TK443	SKS12023	SKB12023
TK461	SKS5006	SKB5006
TK462	SKS7007	SKB7007
TK463	SKS5107	SKB5107
TK464	SKS90112	SKB90112
TK467	SKS9507	SKB9507
TK472	SKS5107	SKB5107
TK472B	SKS5107	SKB5107
TK473	SKS7007	SKB7007
TK473B	SKS7007	SKB7007
TK475	SKS5107	SKB5107
TK480	SKS7004	SKB7004
TK481	SKS7004	SKB7004
TK482	SKS90112	SKB90112
TK483	SKS7006	SKB7006
TK483B	SKS7006	SKB7006
TK490	SKS10909	SKB10909
TK496	SKS0490118	SKB0490118
TK497	SKS7004	SKB7004
TK498	SKS7004	SKB7004
TK506	SKS97018	SKB97018
TK507	SKS90112	SKB90112
TK509	SKS97018	SKB97018

Cross Reference	SKS Spiral Kit	SKB Bronze Kit
TRAYER / ROAD LEVELER		
TK510	SKS0490118	SKB0490118
TK512	SKS0890112	SKB0890112
TK513	SKS0890112	SKB0890112
TK514	SKS97018	SKB97018
TK515	SKS7006	SKB7006
TK525	SKS92112	SKB92112
TK537	SKS7506	SKB7506
TK538	SKS0893112	SKB0893112
TK539	SKS94106	SKB94106
TK540	SKS9506	SKB9506
TK541	SKS5507	SKB5507
TK541B	SKS5507	SKB5507
TK542	SKS0535006	SKB0535006
TK546	SKS10109	SKB10109
TK546B	SKS10109	SKB10109
TK547	SKS9410601	SKB9410601
TK548	SKS10809	SKB10809
TK549	SKS13909	SKB13909
TK549B	SKS13909	SKB13909
TK550	SKS30909	SKB30909
TK550B	SKS30909	SKB30909
TK551	SKS93112	SKB93112
TK553	SKS0535006	SKB0535006
TK554B	SKS9809	SKB9809
TK556	SKS53513	SKB53513
TK557	SKS53313	SKB53313
TK558	SKS12107	SKB12107
TK560	SKS12523	SKB12523
TK561	SKS12623	SKB12623
TK562	SKS5006	SKB5006
TK566	SKS61613	SKB61613
TK567	SKS31009	SKB31009
TK567B	SKS31009	SKB31009
TK568	SKS0793118	SKB0793118
TK569	SKS93112	SKB93112
TK570	SKS97118	SKB97118
TK571	SKS14009	SKB14009
TK589	SKS12005	SKB12005
TK590	SKS0893112	SKB0893112
TK592	SKS5607	SKB5607
TK594	SKS7106	SKB7106
TK596	SKS12105	SKB12105
TK597	SKS7206	SKB7206
TK598	SKS94206	SKB94206
TK599	SKS9606	SKB9606
TK600	SKS94106	SKB94106
TK601	SKS94106	SKB94106
TK602	SKS18005	SKB18005
TK603	SKS10209	SKB10209
TK603B	SKS10209	SKB10209
TK604	SKS96112	SKB96112
TK605	SKS10809	SKB10809
TK606	SKS14009	SKB14009
TK608	SKS5107	SKB5107
TK609	SKS12005	SKB12005

Cross Reference	SKS Spiral Kit	SKB Bronze Kit
TRAYER / ROAD LEVELER		
TK610	SKS12105	SKB12105
TK611	SKS5607	SKB5607
TK613	SKS7004	SKB7004
TK614	SKS7007	SKB7007
TK616	SKS7004	SKB7004
TK624	SKS7007	SKB7007
TK626	SKS10319	SKB10319
TK632	SKS7106	SKB7106
TK633	SKS18005	SKB18005
TK634	SKS96112	SKB96112
TK635	SKS12009	SKB12009
TK635B	SKS12009	SKB12009
TK636	SKS14119	SKB14119
TK637	SKS7606	SKB7606
TK638	SKS9420601	SKB9420601
TK640	SKS8007	SKB8007
TK641	SKS11007	SKB11007
TK642	SKS12007	SKB12007
TK645	SKS10209	SKB10209
TK646	SKS12009	SKB12009
TK652	SKS12205	SKB12205
TK653	SKS18005	SKB18005
TK654	SKS14605	SKB14605
TK716	SKS12205	SKB12205
TK750	SKS53613	SKB53613
K391C	SKS5107	SKB5107
K391N	SKS5107	SKB5107
K401N	SKS9809	SKB9809
TRW		
K450	SKS12507	SKB12507
K459	SKS0490018	SKB0490018
K463	SKS9507	SKB9507
K465	SKS0490118	SKB0490118
K477	SKS7004	SKB7004
K478	SKS0490018	SKB0490018
K479	SKS12023	SKB12023
K482	SKS7004	SKB7004
K487	SKS53513	SKB53513
K487B	SKS53513	SKB53513
K489	SKS12507	SKB12507
K491	SKS5107	SKB5107
K491N	SKS5107	SKB5107
K492	SKS7007	SKB7007
K493	SKS5006	SKB5006
K494	SKS97018	SKB97018
K496	SKS0490118	SKB0490118
K496B	SKS0490118	SKB0490118
K499	SKS9507	SKB9507
K503	SKS7004	SKB7004
K504	SKS90112	SKB90112
K505	SKS97018	SKB97018
K505B	SKS97018	SKB97018
K506	SKS7007	SKB7007
K506B	SKS7007	SKB7007
K507	SKS5107	SKB5107



PLEASE CHECK AVAILABILITY pg 35

Cross Reference	SKS Spiral Kit	SKB Bronze Kit
TRW		
K507B	SKS5107	SKB5107
K508	SKS7006	SKB7006
K509	SKS7006	SKB7006
K509B	SKS7006	SKB7006
K510B	SKS90112	SKB90112
K516	SKS10909	SKB10909
K523B	SKS14009	SKB14009
K524B	SKS10909	SKB10909
K526B	SKS97018	SKB97018
K526D	SKS97018	SKB97018
K534B	SKS92112	SKB92112
K535B	SKS14009	SKB14009
K535D	SKS14009	SKB14009
K536B	SKS7007	SKB7007
K538B	SKS7506	SKB7506
K539D	SKS5507	SKB5507
K540B	SKS5507	SKB5507
K541B	SKS0890112	SKB0890112
K542D	SKS0890112	SKB0890112
K545B	SKS0535006	SKB0535006
K546B	SKS9506	SKB9506
K547B	SKS0893112	SKB0893112
K548B	SKS94106	SKB94106
K549B	SKS10109	SKB10109
K551B	SKS10809	SKB10809
K552B	SKS13909	SKB13909
K553D	SKS13909	SKB13909
K554B	SKS30909	SKB30909
K555D	SKS30909	SKB30909
K558B	SKS9410601	SKB9410601
K559B	SKS0535006	SKB0535006
K561B	SKS53513	SKB53513
K562B	SKS53313	SKB53313
K563B	SKS93112	SKB93112
K564B	SKS12523	SKB12523
K565B	SKS12623	SKB12623
K567B	SKS12107	SKB12107
K570B	SKS97118	SKB97118
K571B	SKS31009	SKB31009
K572B	SKS14009	SKB14009
K574B	SKS61613	SKB61613
K575B	SKS0490018	SKB0490018
K576C	SKS93112	SKB93112
K577C	SKS5607	SKB5607
K578B	SKS7106	SKB7106
K582	SKS0793118	SKB0793118
K583	SKS0793118	SKB0793118
K584	SKS12005	SKB12005
K585	SKS0893112	SKB0893112
K586	SKS12105	SKB12105
K587	SKS7206	SKB7206
K588	SKS94206	SKB94206
K589	SKS9606	SKB9606
K590	SKS94106	SKB94106
K591B	SKS18005	SKB18005

Cross Reference	SKS Spiral Kit	SKB Bronze Kit
TRW		
K592	SKS10209	SKB10209
K593	SKS96112	SKB96112
K594	SKS14009	SKB14009
K595	SKS10809	SKB10809
K596	SKS94106	SKB94106
K602	SKS12009	SKB12009
K602C	SKS12009	SKB12009
K603C	SKS14119	SKB14119
K606C	SKS9420601	SKB9420601
K607B	SKS7606	SKB7606
K608	SKS5107	SKB5107
K609	SKS12005	SKB12005
K610	SKS12105	SKB12105
K611	SKS5607	SKB5607
K612B	SKS14606	SKB14606
K617	SKS18005	SKB18005
K618C	SKS8007	SKB8007
K619C	SKS11007	SKB11007
K620	SKS12007	SKB12007
K623C	SKS14119	SKB14119
K624C	SKS94206	SKB94206
K627C	SKS16019	SKB16019
K628	SKS12205	SKB12205
TW		
FKP102C	SKS5607	SKB5607
FKP105B	SKS94106	SKB94106
FKP115B	SKS12005	SKB12005
FKP39B	SKS7007	SKB7007
FKP68B	SKS14009	SKB14009
FKP77B	SKS13909	SKB13909
FKP85B	SKS53313	SKB53313
FKP86B	SKS12107	SKB12107
FKP90B	SKS93112	SKB93112
FKP94B	SKS61613	SKB61613
FKP98B	SKS12005	SKB12005
123	SKS12507	SKB12507
138	SKS0490118	SKB0490118
142	SKS0490118	SKB0490118
VOLVO-WHITE		
143	SKS7004	SKB7004
144	SKS12507	SKB12507
154	SKS0490118	SKB0490118
155	SKS7004	SKB7004
156	SKS97018	SKB97018
157	SKS97018	SKB97018
167	SKS90112	SKB90112
168	SKS0890112	SKB0890112
170	SKS0890112	SKB0890112
172	SKS90112	SKB90112
195	SKS93112	SKB93112
198	SKS0893112	SKB0893112
199	SKS92112	SKB92112
1300	SKS97118	SKB97118
1307	SKS93112	SKB93112
216446	SKS12023	SKB12023

Cross Reference	SKS Spiral Kit	SKB Bronze Kit
VOLVO-WHITE		
216677	SKS0490118	SKB0490118
217175	SKS12523	SKB12523
836687	SKS12507	SKB12507
857328	SKS12507	SKB12507
859552	SKS97018	SKB97018
1115275	SKS96112	SKB96112
1715442	SKS97018	SKB97018
1720728	SKS0890112	SKB0890112
1739844	SKS0890112	SKB0890112
20751021	SKS12108	SKB12108
3009155	SKS90112	SKB90112
3090266	SKS14022	SKB14022
3090267	SKS12222	SKB12222
3093704	SKS98118	SKB98118
3130711	SKS12222	SKB12222
3133649	SKS12107	SKB12107
3947959	SKS12205	SKB12205
7000856	SKS90112	SKB90112
85101057	SKS0793118	SKB0793118
85104370	SKS12108	SKB12108
85104371	SKS12108	SKB12108
85106184	SKS12205	SKB12205
85108338	SKS53613	SKB53613
85125838	SKS0893112	SKB0893112
02-7091941	SKS92112	SKB92112
37090-4417	SKS0793118	SKB0793118
37090-5000	SKS93112	SKB93112
37090-5002	SKS0793118	SKB0793118
37090-5005	SKS12623	SKB12623
37090-5015	SKS97118	SKB97118
37090-5018	SKS93112	SKB93112
37090-5019	SKS0793118	SKB0793118
37090-5022	SKS0893112	SKB0893112
V1110083	SKS0893112	SKB0893112
V1112400	SKS12005	SKB12005
V1112446	SKS12005	SKB12005
V1112810	SKS12005	SKB12005
V276193	SKS12222	SKB12222
WATSON CHALIN		
SRK98	SKS13023	SKB13023
SRK102	SKS96112	SKB96112
SRK103	SKS94118	SKB94118
SRK105	SKS0893112	SKB0893112
SRK112	SKS13023	SKB13023
SRK115	SKS8123	SKB8123
SRK120	SKS18118	SKB18118
WESTERN STAR		
195	SKS93112	SKB93112
198	SKS0893112	SKB0893112
1307	SKS93112	SKB93112
217175	SKS12523	SKB12523
806355	SKS12005	SKB12005
37090-5000	SKS93112	SKB93112
37090-5002	SKS0793118	SKB0793118
37090-5005	SKS12623	SKB12623



COMPETITIVE KIT INTERCHANGE

WESTERN STAR - WORKHORSE

PLEASE CHECK AVAILABILITY pg 35

Cross Reference	SKS Spiral Kit	SKB Bronze Kit
WESTERN STAR		
37090-5015	SKS97118	SKB97118
37090-5018	SKS93112	SKB93112
37090-5019	SKS0793118	SKB0793118
37090-5022	SKS0893112	SKB0893112
143698-0001	SKS12523	SKB12523
143698-0002	SKS12623	SKB12623
WESTPORT		
143698-0018	SKS18118	SKB18118
143698-0024	SKS9506	SKB9506
143698-0029	SKS12723	SKB12723
143698-0040	SKS7206	SKB7206
143698-0051	SKS12623	SKB12623
143698-0052	SKS12723	SKB12723
143698-0053	SKS9606	SKB9606
143698-0063	SKS12723	SKB12723
1637090-4405	SKS12623	SKB12623
WORKHORSE		
8003056	SKS5023	SKB5023
8007225	SKS5023	SKB5023
8006372	SKS5807	SKB5807
8803050	SKS5607	SKB5607



Machine Pre-Packed Bearings Save Time

NEED REPLACEMENT PARTS?

STEER KING™

WE HAVE YOU COVERED!

INSTALLATION TOOLS



SKS Spiral Bushing Install Tools

SKT060L - Long T-Handle Tool	For most SKS kits
SKT060S - Short T-Handle Tool	
SKT090L - Long T-Handle Tool	SKS14605, SKS14705, SKS18005, SKS5006, SKS7106, SKS7206, SKS8007, SKS11007, SKS12007, SKS12222, SKS6826, SKS6926
SKT090S - Short T-Handle Tool	
SK06L - Replacement T-Handle Tip Only	For SKT060 L or S
SK09L - Replacement T-Handle Tip Only	For SKT090 L or S
SKPT120A - Solid Bushing Driver	SKS12001
* Kits that do not use T-Handle Tools: SKS8001, SKS12001, SKS12108, SKS12014, SKS1501107, SKS16001, SKS70020, SKS5021	
* Grease Lips Seals for all SKS Spiral Kits are installed using the SKPT Driver Install Tools	



SKB Bronze Bushing Drivers & Grease Lip Seal Install Tools

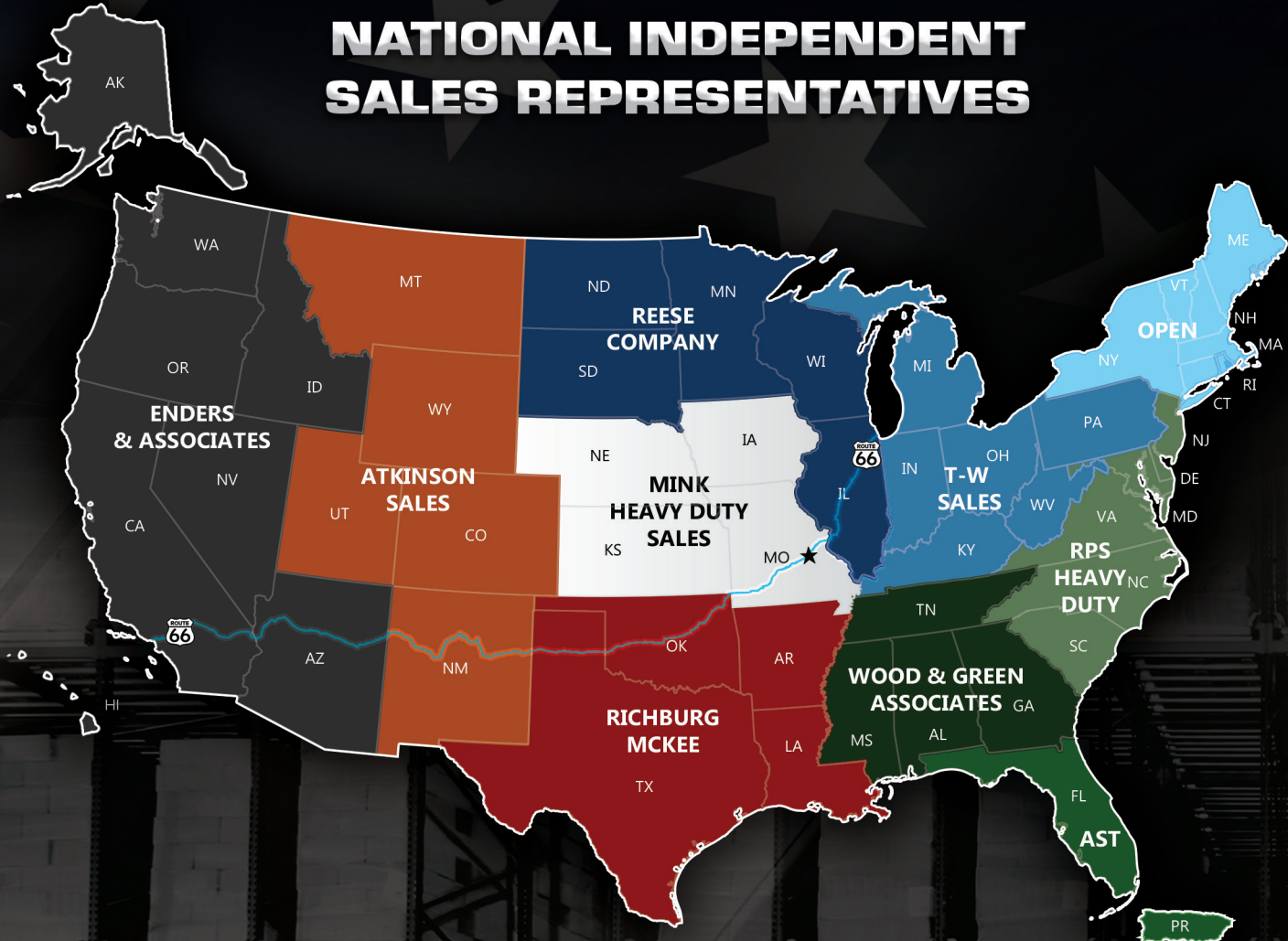
SKPT102I	SKB10209, SKB10319
SKPT120A	SKB12001 (SKS12001)
SKPT120E	SKB12005
SKPT120H	SKB12008, SKB12523, SKB12623, SKB12723, SKB13108
SKPT120I	SKB12009
SKPT122E	SKB0793118, SKB12205, SKB12305, SKB13018, SKB13023, SKB93112, SKB96112, SKB98118
SKPT141S	SKB14119
SKPT147E	SKB14605, SKB14705, SKB14905, SKB18005
SKPT941R	SKB7018, SKB8018, SKB94118
SKPTH931L	SKB0893112, SKB18118
* All Bushing Drivers double as Grease Lip Seal Install Tools on reverse side for both SKB Bronze kits and SKS Spiral kits	

New tools will be available as new kits are engineered. For an up to date listing of tools and available kits please call your rep, call Steer King, visit SteerKing.com or watch for email updates.





NATIONAL INDEPENDENT SALES REPRESENTATIVES



Visit us online for quick and easy support
www.SteerKing.com



- ◆ FIND YOUR LOCAL SALES REPRESENTATIVE
- ◆ PART NUMBER & CROSS REFERENCE SEARCH
- ◆ DOWNLOAD THE LATEST PRODUCT FLYERS
- ◆ ENTER PURCHASE ORDERS
- ◆ CONTACT FOR SUPPORT & MORE INFO



P. 877-741-2111



F. 844-965-9594



Sales@SteerKing.com

Enders & Associates		West Coast	
Don Gritzmacher	dgritzmacher@teamenders.com	p 503-735-0115 c 503-781-5001	Portland, OR 97217
Ken Cobb	kcobb@teamenders.com	p 360-274-3179 c 360-907-3313	Castle Rock, WA 98611
Reed Miller	rmiller@teamenders.com	p 503-799-2702	Portland, OR 97230
Rob Orndorff	romdorff@teamenders.com	p 509-954-4405	Cheney, WA 99004
Dwayne Bivins	dbivins@teamenders.com	p 559-760-5689	Coarsegold, CA 93614
Tim Bradley	tbradley@teamenders.com	p 602-881-7866	Gilbert, AZ 85233
Joe Krieger	jkrieger@teamenders.com	p 909-900-3353	Temecula, CA 92591
Garret Funk	gfunk@teamenders.com	p 562-335-1198	Lakewood, CA 90713
Atkinson Sales		West Central	
Bob Atkinson	batkinson@atkinsonsales.com	p 303-808-4903	Englewood, CO 80110
Mike Nelson	mnelson@atkinsonsales.com	p 720-648-8777	Englewood, CO 80110
Chad Zolman	czolman@atkinsonsales.com	p 303-378-1883	Englewood, CO 80110
Ken Linton	klinton@atkinsonsales.com	p 801-232-3988	Taylorville, UT 84123
Steve Higgins	ahiggins@atkinsonsales.com	p 505-270-2500	Albuquerque, NM 87120
Reese Company		North Central	
Jon Reese	reesecojr@outlook.com	p 847-274-9970	Loves Park, IL 61111
Brad Hesse	bradhesse@gmail.com	p 847-274-5539	De Forest, WI 53532
Chad Mecl	chadmecl@me.com	p 651-249-8774	Somerset, WI 54025
Mink Heavy Duty Sales		Midwest	
Chris Seiwert	chris@mink-link.com	p 316 680-1403	Cheney, KS 67025
Larry Vickers	larry@mink-link.com	p 316-507-5070	Lee's Summit, MO 64064
Benny Hiegert	benny@mink-link.com	p 816-500-6738	Liberty, MO 64068
Richburg McKee Associates		South Central	
Don Richburg	donrr@earthlink.net	p 214-906-9861	Carrollton, TX 75007
John McKee	johnmckee87@hotmail.com	p 713-301-0451	Houston, TX 77063
T-W Sales		East Central	
Dennis Tomecko	dtomecko@embargmail.com	p 417-566-8615	Mansfield, OH 44903
Jack Wolan	vwolan@sbcglobal.net	p 517-548-7767 c 810-623-0783	Howell, MI 48855
Dan Turner	danddc1298@aol.com	p 317-326-3444	Greenfield, IN 46140
Open		Northeast Coast	
Steer King	sales@steerking.com	p 877-741-2111	NY, ME, VT, MA, RI, CT, NH
RPS Heavy Duty		Central East Coast	
Doug Lashley	doug@rpsheavyduty.com	p 215-258-1032 c 215-651-1846	Perkasie, PA 18944
Michael Boggs	mike@rpsheavyduty.com	p 215-280-6806	Jamison, PA 18929
Paul Schumann	paul@rpsheavyduty.com	p 215-258-1032 c 215-669-8353	Perkasie, PA 18944
Shelton Shepherd	shelton@rpsheavyduty.com	p 540-774-7074 c 540-797-6559	Roanoke, VA 24018
Wood & Green Associates		Southeast Coast	
Bill Wood Sr.	williamwoodsrbellsouth.net	p 404-281-4825	Conyers, GA 30094
AST - American Sales Technology		Florida	
Hank Meira	hank@astrep.com	p 813-382-9287	Palm City, FL 34990
Jody Provencher	jody@astrep.com	p 727-366-3448	Oldsmar, FL 34677

PERSONAL & RELIABLE CUSTOMER SERVICE



Clay Zimmerman
Director of Sales

Debbie Nash
Customer Service Agent

CONTACT US ANY TIME!
1-877-741-2111 Sales@SteerKing.com



Clay Zimmerman, Joshua Medling, George Sturmon, Susan Schmidt



AN AMERICAN ENGINEERING COMPANY

KING PIN KIT DIMENSIONS & AVAILABILITY

Steer King Spiral SKS AVAILABLE?	Steer King Bronze SKB AVAILABLE?	Make	Pin Type	King Pin Dimensions	Spindle Bore Dimensions	Axle Bore Dimensions	Lip Seal & SKB Tool	T-Handle SKS Tool	STEMCO / Kaiser Qwik Kit	STEMCO / Kaiser Plus Kit	Meritor Spiral Kit	Spicer Spiral Kit
X	X	ROCKWELL	B	1.794 x 10.40	1.919/1.921	1.795/1.797	SKPT122E	SKT060	KG931R	77.931.18	R202010	KPK3010
X	X	FORD	B	1.999 x 11.21	2.124/2.126	2.000/2.002	SKPTH931L	SKT060	KH931F	78.931.06		
X	X	ROCKWELL	B	1.999 x 11.21	2.124/2.126	2.000/2.002	SKPTH931L	SKT060	KH931L	78.931.12	R202011	KPK3007
X	X	IH	B	1.359 x 7.97	1.486/1.485	1.358/1.360	SKPT102I	SKT060	K102I	70.102.09	R202005	KPK3005
X	X	DANA	C	1.359 x 7.97	1.483/1.485	1.358/1.360	SKPT102I	SKT060	K103S	70.103.19	R202009	KPK3004
X	X	ALLIANCE	B	1.771 x 9.23	2.045/2.047	1.772/1.774	SKPT120A		K120A		R202037	
X	X	EATON	A	1.625 x 9.19	1.749/1.750	1.626/1.627	SKPT120E	SKT060	K120E	70.120.05	R202007	KPK3006
X	X	HENDRICKSON	H/A	1.810 x 9.54	1.937/1.939	1.811/1.812	SKPT120H	SKT060	K120H			
X	X	IH	B	1.921 x 9.87	2.045/2.047	1.922/1.923	SKPT120I	SKT060	K120I	70.120.09	R202004	KPK3003
X	X	ROCKWELL	B	1.794 x 10.40	1.919/1.921	1.795/1.797	SKPT122E	SKT060	K120R	70.120.18	R202040	
X	X	EATON	A/C	1.794 x 9.05	1.919/1.921	1.794/1.796	SKPT122E	SKT060	K122E	70.122.05	R202001	KPK3011
X	X	DANA	C	1.794 x 9.05	1.919/1.921	1.794/1.796	SKPT122E	SKT060	K123E	70.123.05	R202033	
X	X	WESTPORT	A	1.810 x 10.56	1.937/1.939	1.811/1.812	SKPT120H	SKT060	K125W	70.125.23		
X	X	WESTPORT	A	1.810 x 10.56	1.936/1.938	1.811/1.812	SKPT120H	SKT060	K126W	70.126.23		
X	X	WESTPORT	A	1.810 x 10.56	1.936/1.938	1.811/1.812	SKPT120H	SKT060	K127W	70.127.23		
X	X	ROCKWELL	B	1.794 x 9.02	1.919/1.921	1.795/1.797	SKPT122E	SKT060	K130R			
X	X	WESTPORT	B	1.794 x 10.40	1.919/1.921	1.795/1.797	SKPT122E	SKT060	K130W			
X	X	HENDRICKSON	A	1.810 x 9.54	1.937/1.939	1.811/1.812	SKPT120H	SKT060	K131H			
X	X	IH / SPICER	B	2.046 x 10.12	2.171/2.173	2.042/2.048	SKPT141S	SKT060	K141S	70.141.19	R202020	KPK3064
X	X	EATON	A/C	1.872 x 9.05	2.057/2.058	1.873/1.875	SKPT147E	SKT090	K146E	70.146.05	R202018	KPK3016
X	X	DANA	C	1.872 x 9.05	2.057/2.058	1.873/1.875	SKPT147E	SKT090	K147E	70.147.05	R202006	KPK3002
X	X	KIMBLE	C	1.872 x 9.05	2.057/2.058	1.873/1.875	SKPT147E	SKT060	K149E			
X	X	EATON	A	1.872 x 9.97	2.057/2.058	1.873/1.875	SKPT147E	SKT090	K180E	70.180.05	R202019	KPK3009
X	X	ROCKWELL	B	1.999 x 11.21	2.124/2.126	2.000/2.002	SKPTH931L	SKT060	K180R	70.180.18	R202031	
X	X	ROCKWELL	B	1.999 x 11.21	2.124/2.126	2.000/2.002	SKPTH931L	SKT060	K181R	70.181.18	R202030	
X	X	MAACK	F	1.625 x 7.46	1.749/1.751	Tapered	SKPT120E	SKT060	K533M	70.533.13	R202015	KPK3013
X	X	MAACK	E	2.360 x 8.92	2.559/2.561	Tapered		SKT060	K536M		R202035	
X	X	MAACK	F	2.125 x 8.75	2.499/2.501	Tapered		SKT060	K616M	70.616.13	R202026	
X	X	MERITOR	B	1.499 x 7.15	1.626/1.628	1.501/1.503	SKPT941R	SKT060	K70R	70.070.18	R202021	
X	X	ROCKWELL	B	1.500 x 7.50	1.626/1.628	1.501/1.503	SKPT941R	SKT060	K80R	70.080.18	R202012	KPK3008
X	X	ROCKWELL	B	1.794 x 10.40	1.919/1.921	1.795/1.797	SKPT122E	SKT060	K931L	70.931.12	R202014	KPK3021
X	X	ROCKWELL	B	1.500 x 8.93	1.626/1.628	1.501/1.503	SKPT941R	SKT060	K941R	70.941.18		KPK3057
X	X	ROCKWELL	B	1.794 x 10.40	1.919/1.921	1.795/1.797	SKPT122E	SKT060	K961L	70.961.12	R202002	KPK3001
X	X	ROCKWELL	B	1.794 x 8.87	1.920/1.921	1.795/1.797	SKPT122E	SKT060	K981R	70.981.18	R202003	KPK3056



PLEASE MARK AN "X" AS NEW KITS BECOME AVAILABLE. TO GET AN UP TO DATE PARTS LIST CHECK WITH YOUR REP, CALL STEER KING, VISIT STEERKING.COM, OR WATCH FOR EMAIL UPDATES.

A - King pin has additional lock flats for use in multiple axles. B - King pin engineered to be longer than OEM pin.
 C - Torque spec for king pin nut 230 ft./lbs. D - Torque spec for king pin nut is 406 ft./lbs. E - torque spec for king pin nut is 350/475 ft./lbs.
 F - Torque spec for knuckle attachment bolts is 170-200 ft./lbs.

For T-Handle Wrenches, Bronze Bushing Drivers, and Lip Seal Install Tools - See pg 35

Customer Service: 1-877-741-2111 Sales@SteerKing.com www.SteerKing.com

KING PIN KIT DIMENSIONS & AVAILABILITY

Steer King Spiral SKS AVAILABLE?	Steer King Bronze SKB AVAILABLE?	Make	Pin Type	King Pin Dimensions	Spindle Bore Dimensions	Axle Bore Dimensions	Lip Seal & SKB Tool	T-Handle SKS Tool	STEMCO / Kaiser Qwik Kit	STEMCO / Kaiser Plus Kit	Meritor Spiral Kit	Spicer Spiral Kit
SKS0490018	SKB0490018	ROCKWELL	E	1.434 x 9.41	1.560/1.562	Tapered		SKT060	SKT060	SKT060		
SKS0490118	SKB0490118	ROCKWELL	B	1.434 x 8.50	1.560/1.562	1.434/1.436		SKT060	SKT060	74.901.18		
SKS0535006	SKB0535006	FORD	A	1.054 x 6.68	1.179/1.181	1.055/1.057		SKT060	KE350F	75.350.06		
SKS0890112	SKB0890112	ROCKWELL	B	1.999 x 11.04	2.124/2.126	2.000/2.002	SKPTH931L	SKT060	KH901L	78.901.12		
SKS0894618	SKB0894618	ROCKWELL	B	1.794 x 9.19	1.919/1.921	1.795/1.797	SKPT122E	SKT060	KH946R	78.946.18	R202008	KPK3059
SKS10109	SKB10109	IH	A	1.359 x 7.97	1.486/1.485	1.358/1.360	SKPT102I	SKT060	K101I	70.101.09		
SKS10809	SKB10809	IH	A	1.484 x 8.85	1.608/1.610	1.485/1.487		SKT060	K108I			
SKS10909	SKB10909	IH	B	1.484 x 8.85	1.608/1.610	1.485/1.487		SKT060	K109I			
SKS11007	SKB11007	CHEVY	G	1.889 x 9.20	2.047/2.049	1.891/1.893		SKT090	K110G		R202027	
SKS12007 ^D	SKB12007 ^D	CHEVY	G	1.889 x 9.62	2.047/2.049	1.891/1.893		SKT090	K120G		R202029	
SKS12008 ^F	SKB12008 ^F	HENDRICKSON	H	1.810 x 9.54	1.937/1.939		SKPT120H	SKT060	K120H			
SKS12014	SKB12014	MAN	J	1.969 x 8.77	2.286/2.284	1.967/1.968			K120N			
SKS12023	SKB12023	WESTPORT	A	1.810 x 10.78	1.937/1.939	1.811/1.812		SKT060	K120W			
SKS12105	SKB12105	EATON	A	1.625 x 9.19	7.749/1.750	1.626/1.627	SKPT120E	SKT060	K121E	70.121.05	R202039	
SKS12107	SKB12107	CHEVY	B	1.745 x 9.37	1.876/1.878	1.745/1.747		SKT060	K121G	70.121.07		
SKS12108	SKB12108	HENDRICKSON			1.937/1.939					70.121.08		
SKS12222 ^C	SKB12222 ^C	VOLVO	E	1.777 x 8.62	1.969/1.971	Tapered		SKT090	K122V			
SKS12311	SKB12311	LINK	A	1.794 x 9.05	1.919/1.921	1.794/1.796	SKPT122E	SKT060	K123K			
SKS12507 ^E	SKB12507 ^E	CHEVY	E	1.609 x 9.75	1.733/1.735	Tapered		SKT060	K125G	70.125.07		
SKS13211	SKB13211	LINK	A	1.794 x 9.05	1.919/1.921	1.794/1.796	SKPT122E	SKT060	K132K			
SKS13909	SKB13909	IH	A	1.609 x 9.65	1.733/1.735	1.610/1.612		SKT060	K139I	70.139.09		
SKS14009	SKB14009	IH	B	1.609 x 9.66	1.733/1.735	1.610/1.612		SKT060	K140I	70.140.09		
SKS14022	SKB14022	VOLVO	E	1.969 x 9.88	2.164/2.166	Tapered		SKT060	K140V			
SKS14606	SKB14606	FORD	B	1.810 x 10.54	1.936/1.938	1.811/1.812	SKPT120H	SKT060	K146F			
SKS14619	SKB14619	SPICER	B	1.859 x 10.75	1.994/1.996	1.862/1.864		SKT060	K146S			
SKS1501107	SKB1501107	KGI	A	1.999 x 11.32	2.373/2.374	2.000/2.002			K150KG			
SKS16001	SKB16001	ALLIANCE	B	2.125 x 9.75	2.440/2.442	2.126/2.128			K160A		R202038	
SKS16019	SKB16019	SPICER	B	2.046 x 11.00	2.171/2.173	2.047/2.048	SKPT141S	SKT060	K160S	70.160.19		
SKS16119	SKB16119	DANA	B	2.046 x 11.00	2.171/2.173	2.047/2.048	SKPT141S	SKT060	K161S			
SKS16219	SKB16219	NEOPLAN	B	1.794 x 11.00	1.919/1.921	1.794/1.796	SKPT122E	SKT060	K162S			
SKS17007 ^E	SKB17007 ^E	GMC COACH	E	1.794 x 10.68	1.919/1.921	Tapered		SKT060	K170G			
SKS20019	SKB20019	DANA	B	2.046 x 10.07	2.171/2.172	2.047/2.048	SKPT141S	SKT060	K200S			
SKS20119	SKB20119	DANA	C	2.046 x 10.07	2.171/2.172	2.047/2.048	SKPT141S	SKT060	K201S		R202034	
SKS2301107	SKB2301107	KGI	A	2.249 x 10.60	2.624/2.626	2.250/2.252		SKT060	K230KG	70.230.07		
SKS30909	SKB30909	IH	A	1.609 x 9.16	1.733/1.735	1.610/1.612		SKT060	K309I	70.309.09		
SKS31009	SKB31009	IH	B	1.609 x 9.16	1.733/1.735	1.610/1.612		SKT060	K310I	70.310.09		

PLEASE MARK AN "X" AS NEW KITS BECOME AVAILABLE. TO GET AN UP TO DATE PARTS LIST CHECK WITH YOUR REP, CALL STEER KING, VISIT STEERKING.COM, OR WATCH FOR EMAIL UPDATES.



KING PIN KIT DIMENSIONS & AVAILABILITY

Steer King Spiral SKS AVAILABLE?	Steer King Bronze SKB AVAILABLE?	Make	Pin Type	King Pin Dimensions	Spindle Bore Dimensions	Axle Bore Dimensions	Lip Seal & SKB Tool	T-Handle SKS Tool	STEMCO / Kaiser Plus Kit	Meritor Spiral Kit	Spicer Spiral Kit
		FORD	A	1.231 x 7.85	1.375/1.377	1.232/1.234		SKT090	K50F	70.053.06	
		WORKHORSE	A	1.179 x 7.31	1.314/1.316	1.180/1.182		SKT060	K50W		
		CHEVY	A	1.109 x 6.34	1.229/1.231	1.110/1.112		SKT060	K51G	70.051.07	
		MACK	F	1.500 x 7.40	1.624/1.626	Tapered		SKT060	K535M		
		CHEVY	A	1.179 x 6.36	1.298/1.300	1.180/1.182		SKT060	K55G	70.055.07	KPK3044
		CHEVY	A	1.179 x 6.36	1.314/1.316	1.180/1.182		SKT060	K56G	70.056.07	KPK3017
		CHEVY	A	1.179 x 6.36	1.314/1.316	1.180/1.182		SKT060	K58G	70.058.07	
		MERITOR	A	1.234 x 6.78	1.358/1.360	1.235/1.237		SKT060	K60R		
		MITSUBISHI	A	1.101 x 7.10	1.337/1.339	1.102/1.104		-	K60U		
		ISUZU	A	1.179 x 7.31	1.338/1.340	1.182/1.184		SKT090	K68Z	70.068.26	
		ISUZU	A	1.181 x 7.38	1.338/1.340	1.182/1.184		SKT090	K69Z	70.069.26	
		IMT / INGERSOLL	B	2.248 x 11.30	2.499/2.501	2.250/2.252			K700T	70.700.20	
		FORD	A	1.231 x 8.90	1.355/1.357	1.232/1.234		SKT060	K70F	70.073.06	
		CHEVY	A	1.249 x 7.87	1.368/1.370	1.250/1.252		SKT060	K70G	70.070.07	
		DODGE	B	1.234 x 7.43	1.358/1.360	1.235/1.237		SKT060	K70D	70.070.04	
		ROCKWELL	B	1.234 x 7.43	1.358/1.360	1.235/1.237		SKT060	K71D	70.071.04	
		FORD	A	1.300 x 7.26	1.460/1.462	1.301/1.303		SKT090	K71F	70.071.06	
		FORD	B	1.300 x 7.75	1.454/1.456	1.301/1.303		SKT090	K72F	70.072.06	
		FORD	B	1.433 x 8.25	1.560/1.562	1.433/1.435		SKT060	K75F	70.075.06	
		MACK	A	1.377 x 7.00	1.652/1.654	1.378/1.380		SKT060	K75M		
		FORD	B	1.433 x 8.25	1.560/1.562	1.433/1.435		SKT060	K76F	70.076.06	
		ALLIANCE	B	1.771 x 8.06	2.045/2.047	1.772/1.774	SKPT120A		K80A	R202036	
		CHEVY	G	1.614 x 8.00	1.771/1.773	1.615/1.617		SKT090	K80G		
		WESTPORT	B	1.500 x 8.93	1.326/1.628	1.501/1.503	SKPT941R		K81W		
		ROCKWELL	B	1.794 x 9.12	1.919/1.921	1.795/1.797	SKPT122E		K901L	70.901.12	
		ROCKWELL	B	1.794 x 10.39	1.919/1.921	1.795/1.797	SKPT122E		K921L	70.921.12	
		FORD	B	1.794 x 10.07	1.919/1.921	1.795/1.797	SKPT122E		K941F	70.941.06	
		FORD	B	1.794 x 10.07	1.919/1.921	1.795/1.797	SKPT122E		K941FA		
		FORD	B	1.794 x 10.07	1.919/1.921	1.795/1.797	SKPT122E		K942F	70.942.06	
		FORD	B	1.794 x 10.07	1.919/1.921	1.795/1.797	SKPT122E		K942FA		
		FORD	B	1.606 x 9.07	1.733/1.735	1.607/1.609		SKT060	K95F	70.095.06	
		CHEVY	E	1.434 x 8.75	1.560/1.562	Tapered		SKT060	K95G	70.095.07	
		FORD	B	1.606 x 9.07	1.733/1.735	1.607/1.609		SKT060	K96F	70.096.06	
		ROCKWELL	B	1.606 x 8.81	1.733/1.735	1.608/1.610		SKT060	K970R	70.970.18	
		ROCKWELL	B	1.609 x 9.37	1.733/1.735	1.608/1.610		SKT060	K971R	70.971.18	
		IH	A	1.234 x 7.65	1.358/1.360	1.235/1.237		SKT060	K98I	70.098.09	



PLEASE MARK AN "X" AS NEW KITS BECOME AVAILABLE. TO GET AN UP TO DATE PARTS LIST CHECK WITH YOUR REP, CALL STEER KING, VISIT STEERKING.COM, OR WATCH FOR EMAIL UPDATES.

A - King pin has additional lock flats for use in multiple axes. B - King pin engineered to be longer than OEM pin. C - Torque spec for king pin nut 230 ft./lbs. D - Torque spec for king pin nut is 406 ft./lbs. E - torque spec for king pin nut is 350/475 ft./lbs. F - Torque spec for knuckle attachment bolts is 170-200 ft./lbs. * - Kit in development, see back table for availability.

For T-Handle Wrenches, Bronze Bushing Drivers, and Lip Seal Install Tools - See pg 34

Customer Service: 1-877-741-2111 Sales@SteerKing.com www.SteerKing.com

KEEP YOUR PART\$ TOGETHER



***OLD MAINTENANCE
PROBLEMS...***

***NEW
SOLUTIONS!***

STEER KING



PREMIUM NO-REAM KING PIN KITS

STEER KING 101 Industrial Park Dr. Sullivan, MO 63080 P 877-741-2111 F 844-965-9594 Sales@SteerKing.com www.SteerKing.com