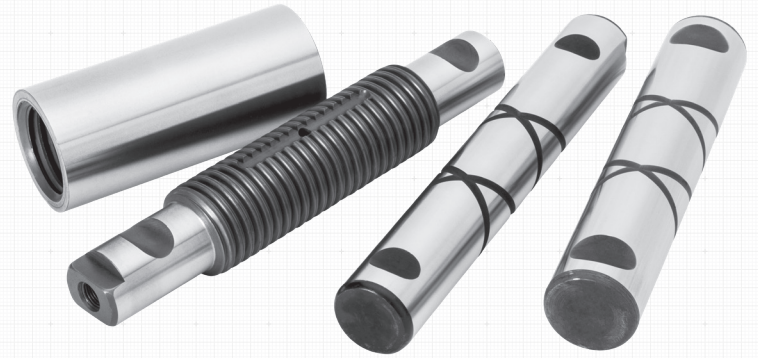


Spring Pins Spring Pin Bushings

Precision. Durability. Reliability.

ATRO's new line of Spring Pins and Spring Pin Bushings delivers the precision and durability you expect from an industry leader. Made with American-produced steel and precision-machined, these parts are engineered to outperform and extend the life of your suspension.



ATRO Spring Pins and Spring Pin Bushings

Engineered for Superior Performance and Durability

Five reasons to choose ATRO Spring Pins and Bushings.

1. Made in the USA with Hardened Steel

Crafted from American-produced steel and built for maximum strength and durability in demanding conditions.

2. Made for Heavy-Duty Trucks

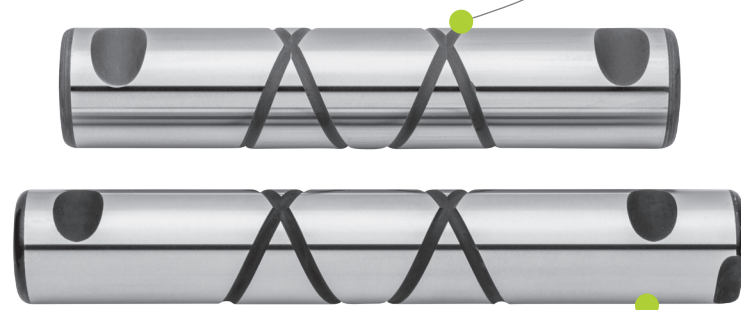
Engineered to withstand the rigors of continuous driving, cornering, and heavy loads.

3. Spiral Grooves Deliver Maximum Lubrication

The grease grooves reduce wear and binding, and keep the leaf spring functioning at peak performance.

4. Matched Fit on Threaded Pins and Bushings*

Both parts are machined in the same facility for quality, consistency, and better results on the suspension.



5. Precision Machined for a Better Fit

Precision machined and ground pins help ensure a better fit and smooth installation every time.



*Advantages of Threaded Pins and Bushings

1. Easier installation and replacement.
2. Will not shift side-to-side when worn.
3. Increased surface area and grease retention.
4. Longer service life for the pin and bushing.



Spring Pins and Spring Pin Bushings

Part #	Description	OEM Pin #	STEMCO Cross	Length	Outside Diameter	Center to Center	Thread	Associated Parts
AA73-1	Spring Pin - Hex Head	Advance Mixer		7.70			1-1/4-12	SRI#RNI
AV24-2	Spring Pin - Straight	37121-0001	BSP24-2	7.00	1.1235	5.485 C-C		SRI#PLK
AF38-2	Spring Pin - Straight	16-12373-000	BSP38-2	6.88	1.25	5.37 C-C		SRI#RNK
AH46-2	Spring Pin - Straight	43146	BSP46-2	6.87	1.3735	5.37 C-C		SRI#TPK
AP49-1	Spring Pin - Straight	1661976C3, 3511254C1	BSP49-1	6.75	1.2475	5.035 C-C		SRI#RNK
AP50-1	Spring Pin - Straight	02-1767, 02-1781	BSP50-1	6.85	1.246	5.31 C-C		SRI#RNK
A075-1	Spring Pin - Straight	57613BX		4.95	1.123			
AP12-17	Spring Pin - Straight	02-01561	BSP12-17	6.26	1.2455	5.08 C-C		SRI#RNK
AW58-1	Spring Pin - Straight	2044870	BSP58-1 BSP68-1	6.25	1.1225	4.62 C-C		
AM82-1	Spring Pin - Straight	023658F		5.87	0.998	4.53 C-C		
AN31-6	Spring Pin - Straight	44QK173B	BSP31-6	6.25	1.249			
AR39-1	Spring Pin - Straight	Rosenbauer		6.88	1.2445	5.37 C-C		
AS50-2	Spring Pin - Straight	F7HZ-5780DB	BSP50-2	6.66	1.25	5.12 C-C		SRI#RNK
AK70-1	Spring Pin - Threaded	5296	BSP70-1 BSP75-1	7.37	1.062		1 3/8"-6	Use with ATB68
AM83-1	Spring Pin - Threaded	1076334/1614230	BSP83-1	7.03	1.493/1.178		M33.5X4 90°	Use with ATB77/ATB78
A068-1	Spring Pin - Threaded	688952R1		7.37	0.906	5.75 C-C	1 3/8"	Use with ATB26
A071-1	Spring Pin - Threaded	507203C1	BSP71-1	7.37	0.804	5.75 C-C	1 3/8"-6	Use with ATB26
AM79-1	Spring Pin - Threaded	16-12302-000	BSP79-1	7.13	1.248/.997		1 1/4-7"	Use with ATB73
AM85-1	Spring Pin - Threaded	10QK3105M	BSP85-1	7.03	1.493/1.179		M33.5X4 90°	Use with ATB77/ATB78
AM90-1	Spring Pin - Threaded	44QK26A	BSP90-1	6.66	1.062	5.01 C-C	3/8"-6	Use with ATB69
ATB68	Threaded Spring Pin Bushing	5295	BSG0068-1	4.00	1.753		1 3/8"-6	Use with AK70-1
ATB77	Threaded Spring Pin Bushing	B13-1000/52700-000		4.12	1.7715		M33.5X4 90°	Use with AM83-1/AM85-1
ATB26	Threaded Spring Pin Bushing	688951R1	BSG0026-1	4.00	1.765		1 3/8"-6	Use with A068-1/A071-1
ATB69	Threaded Spring Pin Bushing	10QK148A	BSG0069-1	3.50	1.765		1 3/8"-6	Use with AM90-1
ATB73	Threaded Spring Pin Bushing	16-12301-000	BSG0073-1	4.00	1.5025		1 1/4-7"	Use with AM73-1
ATB78	Threaded Spring Pin Bushing	10QK3114M, 10QK3115M, 1075724, 20409623		4.00	1.7715		M33.5X4 90°	Use with AM83-1/AM85-1

