

PRODUCT SPOTLIGHT

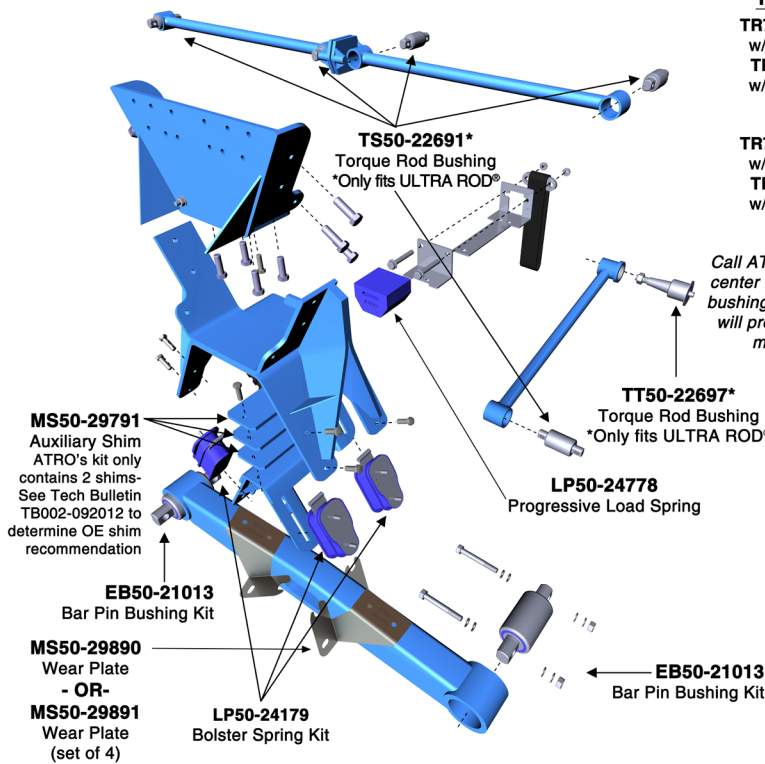
ATRO Kits: Haulmaax® Suspension

KEY TO EFFICIENT REPAIRS COMES WITH HAVING THE RIGHT PARTS TO DO THE JOB.

- Ensure you have all the right parts
- One part number to stock
- Steamline the ordering process

For additional information about the Haulmaax® kit and suspension or other popular kits and suspensions, visit the following:

- www.atrobushing.com - Search "Haulmaax"
- www.vimeo.com/user84803198
- www.youtube.com - Search ATRO Bushing



TORQUE RODS

TR71000 Female End
w/TS38000 Bushing
TR75000 Male End
w/TS38000 Bushing

-OR-

TR71000 Female End
w/TS38000 Bushing
TR76000 Male End
w/TT38000 Bushing

-OR-

Call ATRO with your center to center measurement and your bushing configuration and they will provide you with a ready made complete rod

KT50-25002

Contains:
(4) LP50-24179
(1) LP50-24902

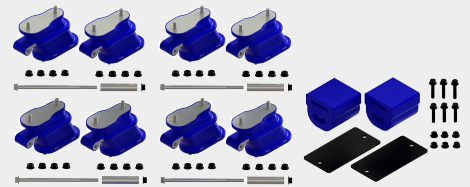
KT50-25003

Contains:
(4) LP50-24179
(1) LP50-24902
(1) MS50-29891

NOTE: Replacing the center mounted progressive auxiliary spring with all bolster spring repairs is required. Failure to install the auxiliary spring or mixing ATRO suspension components with other manufacturer's components will negatively affect ride quality and may cause premature failure of the bolster springs.

ATRO PARTS

ENGINEERED | DURABLE | RELIABLE
MANUFACTURED IN ST. CLAIR, MISSOURI | U.S.A.



KT50-25002 HAULMAAX® SUSPENSION KIT

Contains:

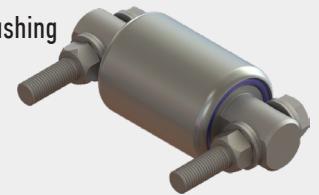
- (4) LP50-24179
8-Bolster Springs; 4-Spacers;
4-Flange Bolts; 36-Flange Nuts
- (1) LP50-24902
2-Progressive Load Springs;
2-Shims; 6-Bolts; 6-Locknuts

KT50-25003 includes all components above
PLUS (1) MS50-29891 (4-Wear Plates)

EB50-21013 BAR PIN BUSHING KIT

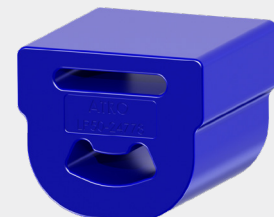
Contains:

- (1) Bar Pin Bushing
- (2) Bolts
- (2) Nuts
- (4) Shims
- (4) Washers



KEY PART PROGRESSIVE AUXILIARY SPRING

- Load Spring is NOT an overload spring or bump stop
- It is designed to carry up to 40% of the load
- Properly installed, the auxiliary spring is in contact with the contact plate on the saddle 100% of the time



ATRO KEY KITS

ATRO PARTS
 ENGINEERED | DURABLE | RELIABLE
 MANUFACTURED IN ST. CLAIR, MISSOURI | U.S.A.

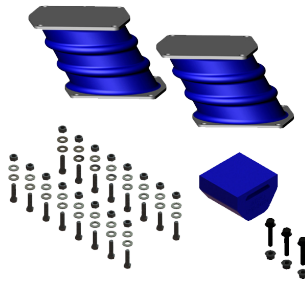
For a complete selection of OEM Replacement Parts, visit ATRObushing.com.

KT50-25004

Hendrickson HN Suspension Kit

CONTAINS:

- (1) LP50-24000
2-Bolster Springs
- (1) LP50-24974
1-Spring Pad; 3-Bolts; 3-Locknuts
- (16) Bolts, 7/16"-20x 1.25"
- (16) Locknuts
- (32) Flat Washers

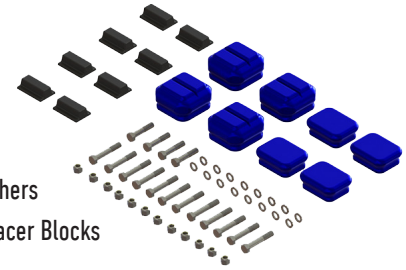


SK62-50340

Mack Insulator Kit

CONTAINS:

- (1) SK50340-HW
4-MA36500 Upper Pads;
4-MA36000 Lower Pads;
4-Bolts, 7/8"-9UNC 4";
2-Bolts, 7/8"-14UNF 5";
12-Locknuts; 16-Flat Washers
- (8) MS62-29246 Insulator Spacer Blocks

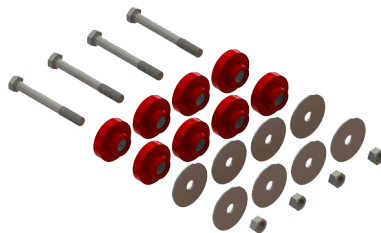


KT62-62216-HT

Mack Isolator Kit-High Temp

CONTAINS:

- (8) PL1017-HT Transmission Mounts
- (4) Bolts
- (8) Washers
- (4) Locknuts



Replaces:
Mack 204SX216

EM75-61001-HT

Peterbilt Air Cooler Mount Kit-High Temp

CONTAINS:

- (4) Polyurethane Mount Bushings
- (4) Polyurethane Washers
- (4) Flat Washers
- (8) Bolts
- (4) Locknuts



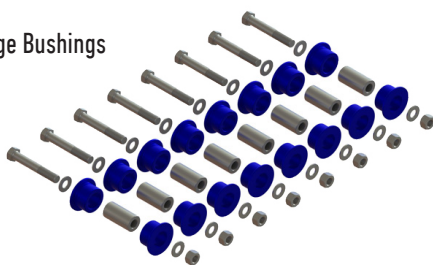
Replaces:
PACCAR N4751001

PB00-26839

Lift Axle Bushing Kit

CONTAINS:

- (16) PB00-36314 Flange Bushings
- (8) Inner Sleeves
- (8) Bolts
- (8) Flat Washers
- (4) Locknuts



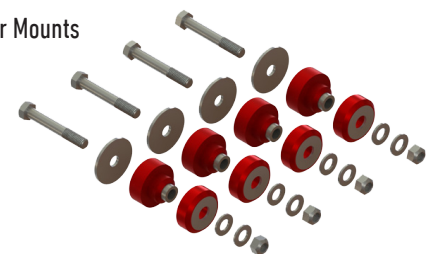
Replaces:
Various OEM R008839

MM75-62001-HT

Peterbilt Rear Motor Mount Kit-High Temp

CONTAINS:

- (4) MM75-62372-HT Motor Mounts
- (4) Bolts
- (4) Snubber Washers
- (8) Flat Washers
- (4) Locknuts



Replaces:
Peterbilt MR1001 (Motor Mount ONLY)

ATRO
POLYURETHANE • SOLUTIONS

POLYURETHANE PARTS | SOLUTIONS FOR HEAVY TRUCKS

ATROBUSHING.COM
 ©2018 ATRO ENGINEERED SYSTEMS, INC.

6 Bolte Lane
 St. Clair, Missouri 63077 | U.S.A.
 (800) 325.6114 | Fax (866) 920.2005