

PRODUCT ANNOUNCEMENT

ATRO PARTS
ENGINEERED | DURABLE | RELIABLE
MANUFACTURED IN ST. CLAIR, MISSOURI | U.S.A.

WATSON CHALIN SL1100LW SUSPENSION

This self steering, lightweight lift axle suspension system, is ideal for dump, mixer and refuse applications.

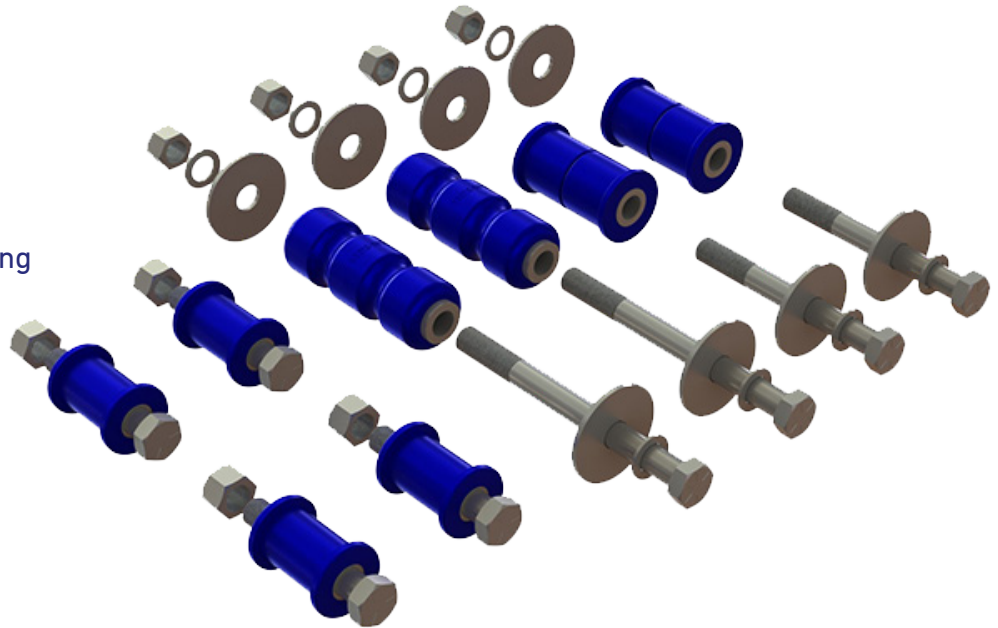
KT93-25K14

Rebuild/Maintenance Kit

Watson Chalin SRK14

Kit Contains:

- (2) PB93-26931 Pivot Bushing
- (2) AS93-27932 Axle Seat Bushing
- (4) PL1118 Torque Rod Bushing
- (8) Flat Washer, 3 1/4"
- (8) Flat Washer, 1 1/2"
- (4) Bolt, 5 1/2"
- (2) Bolt, 9 1/2"
- (2) Bolt, 7 1/2"
- (8) Locknut



Quantity: 1 per suspension

UPC Code: 751354039368

AS93-27932

Axle Seat Bushing

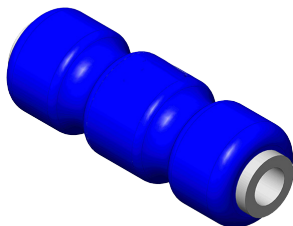
Watson Chalin 12932-01

Dimensions:

- Length: 7"
- Outer Diameter: 2 13/32"
- Bolt Size: 7/8"

Qty per Axle: 2

UPC Code: 751354039351



PB93-26931

Pivot Bushing

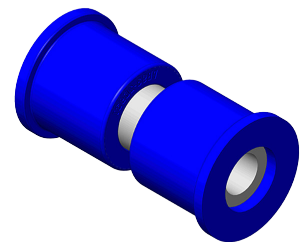
Watson Chalin 12931-01
(1 piece design)

Dimensions:

- Length: 4 1/2"
- Outer Diameter: 2 13/32"
- Inner Diameter: 7/8" & 1"

Qty per Axle: 2

UPC Code: 751354039344



ATRO POLYURETHANES

ATRO PARTS
ENGINEERED | DURABLE | RELIABLE
MANUFACTURED IN ST. CLAIR, MISSOURI | U.S.A.

KEY FEATURES: *The ATRO Difference*

ATRO maintains 11 proprietary formulations, ATRO Polys, each having unique physical properties to optimize performance. Whether absorbing a shock or transferring energy, ATRO is engineered to function based on the demands of the part. ATRO provides polyurethane parts and solutions for heavy trucks.

WHAT MAKES **ATRO PARTS** DIFFERENT ...

The Material

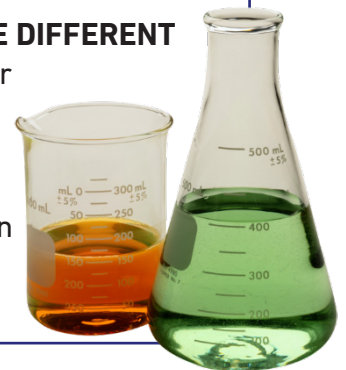


11 PROPRIETARY ATRO POLY FORMULAS

Upon evaluation of the application and the purpose/function of the part, ATRO will determine which specifically formulated poly. ATRO meets or exceeds OE specs, matches or improves ride performance.

POLYURETHANES ARE DIFFERENT

- Ranging Durometer
- Tensile Strength
- Tear Strength
- Compression Set
- Ultimate Elongation
- Rebound



ATRO Polyurethane is better than Rubber

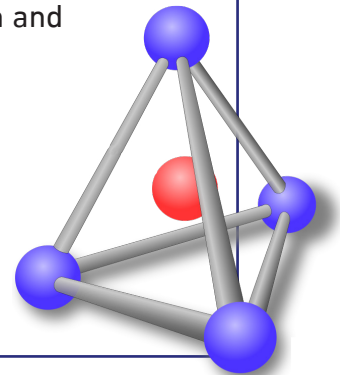


STRONGER MATERIAL

- ATRO Polys are specifically engineered to the function of the part providing added durability and reliability to the suspension.
- ATRO Polys absorb energy, some deflect energy. Some maintain higher rebound or greater compression. Each part engineered for purpose and functionality.
- Rubber primarily maintains one set of properties.
- ATRO Polys maintains at least 2x or greater tensile and tear strength and 2x the elongation vs. rubber.

CHEMICALLY RESISTANT

- ATRO Polys are impervious to oil, grease, brine, cleaning solvents, hydraulic fluids and diesel fuel.
- Rubber deteriorates in similar conditions.



CELEBRATING 30 YEARS
ATRO
POLYURETHANE • SOLUTIONS

POLYURETHANE PARTS | SOLUTIONS FOR HEAVY TRUCKS

ATROBUSHING.COM
©2017 ATRO ENGINEERED SYSTEMS, INC.

6 Bolte Lane
St. Clair, Missouri 63077 | U.S.A.
(800) 325.6114 | Fax (866) 920.2005