

MARCH 1, 2022

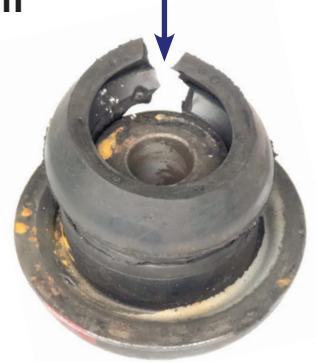
PRODUCT ANNOUNCEMENT



ATRO's Latest Problem Solving Design

Problem: The rear engine/transmission mounts on newer Mack Cabover Refuse Trucks (MRU) are experiencing an early and high failure rate. The original equipment mount is a one-piece design with a skirt that is compressed by a washer to create the snubber (lower) portion of the mount.

Typical Failure Point



Solution: The ATRO engineering team designed a two-piece solution that eliminates the common failure point and also features ATRO's exclusive High-Temp polyurethane which both work to extend the lifespan of the mount.

MM62-63582-HT

Engine/Trans Mount Assy, High Temp

Dimensions:

Large Diameter: 3.75"

Small Diameter: 2.50"

Inside Diameter: .78"

Qty Per Vehicle: 2

Cross References

Mack: 20QL336, 25153582

UPC Code: 751354042597

Fits Mack Trucks with ISL-G Engine (CNG) on the Mack MRU cabover chassis.



ATRO

ENGINEERED SYSTEMS

With ATRO behind you, drive forward.

SUSPENSION | TRAILER | STEERING | TORQUE ROD | UNDERCAB/HOOD | SERVICE PARTS | TOOLS

PA003-030122

6 Bolte Lane

St. Clair, Missouri 63077 • U.S.A.

800.325.6114 • Fax 866.920.2005

ATRObushing.com

©2022 ATRO ENGINEERED SYSTEMS, INC.

ATRO Engineered Systems, Inc. is not liable for any errors herein. All manufacturers' names and part numbers are used without permission; no endorsement, affiliation, or recommendation is implied. They are included for reference purposes only.