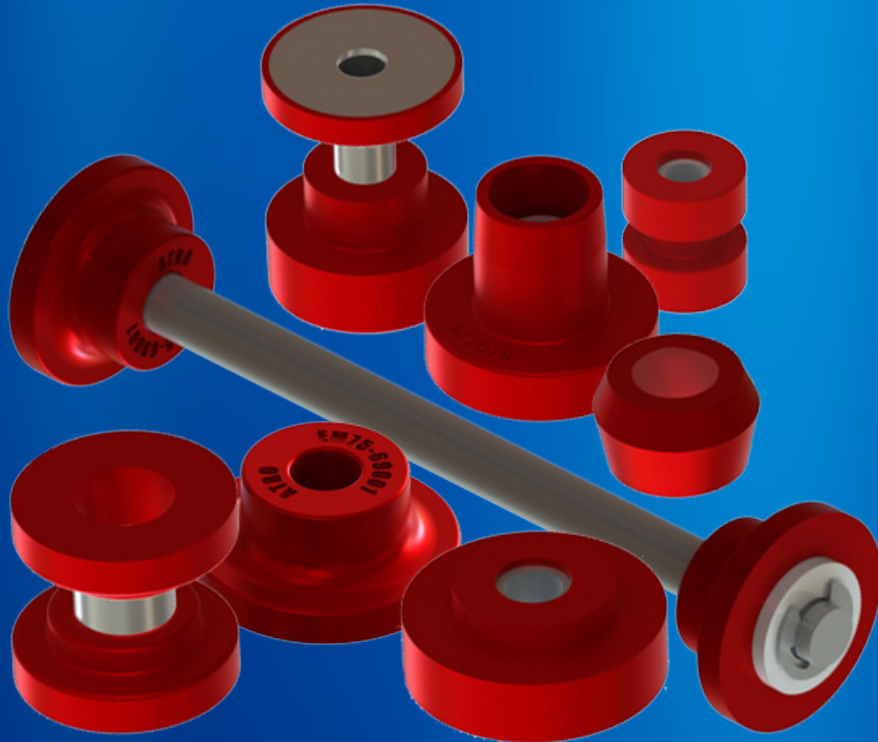


ATRO

ENGINEERED SYSTEMS



HIGH TEMP PRODUCT CATALOG

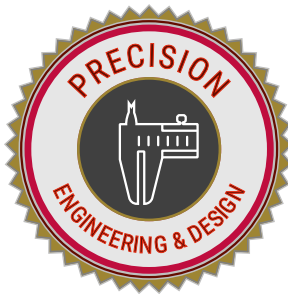
WITH ATRO BEHIND YOU, DRIVE FORWARD.

6 Bolte Lane
St. Clair, Missouri 63077 | U.S.A.
800.325.6114 | Fax 866.920.2005
ATROBUSHING.COM

June 2020

CONTENTS

Autocar	1
E-One	1
Ford.....	1
Freightliner.....	1
GMC	4
International	5
Kenworth	7
Mack	10
Oshkosh.....	11
Ottawa	12
Peterbilt	12
Sterling Truck	16
Volvo	17
Western Star.....	18



For over 30 years, ATRO Engineered Systems has applied our strength in engineering to solve some of the challenges facing the heavy-duty trucking industry. Our parts are engineered with precision to deliver improved performance, so the fleets who use them will improve productivity in their operation.

As the more fuel efficient EGR and SCR engines were introduced to the heavy-duty truck market, it led to higher failure rates of engine mounts that couldn't withstand the higher sustained heat levels under the hood.

In 2012, ATRO developed a high temperature polyurethane material to stand up to the higher temperatures and successfully introduced the first seven mounts using the new formulation. After continued growth of the product line, ATRO is proud to announce the improved formulation and expansion of the Red High Temp urethane is rolling it out to the entire group of nearly 100 Underhood and Undercab products.

With ATRO behind you, drive forward.

ATRO Engineered Systems, Inc. is not liable for any errors herein. All manufacturers' names and part numbers are used without permission; no endorsement, affiliation, or recommendation is implied. They are included for reference purposes only.

AUTOCAR

MM96-62002-HT

Engine Mount, Front (Snubber)

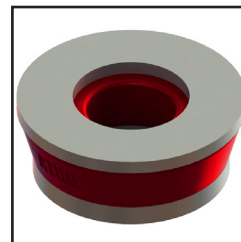
Autocar 12005-0002

Autocar 12005-3208

Autocar 3081659

Qty per Vehicle: 2

ID	OD	Thickness
5/8"	2 3/4"	1"



MM96-62657-HT

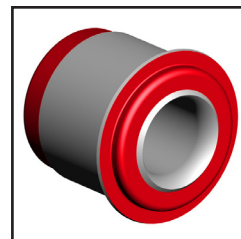
Engine Mount

ISL Engines

Autocar 8077380

Qty per Vehicle: 2

Length	Width	Height	ID	OD-Small
3"	5.65"	3.5"	1 1/2"	3"



E-ONE

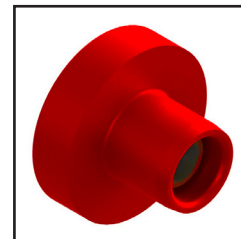
PL1102-HT

Engine Mount

E-One Fire Truck

Lord CBA33-1600

Length	Bolt ID	OD-Large	OD-Small
2 3/8"	3/4"	3 1/4"	1 5/8"



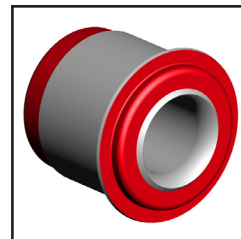
FORD

PL1048-HT

Engine Mount

Ford D0HZ6068B

Length	Width	Height	ID	OD-Large	OD-Small
3 1/8"	5.75"	3.7"	1 1/2"	3 7/16"	3"



FREIGHTLINER

MM00-62000-HT

Engine Mount Kit, Front

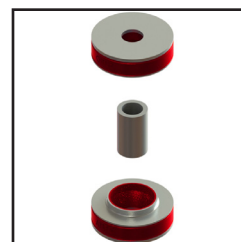
Freightliner LOR SSB33 1000 2

Qty per Vehicle: 2

Contains:

(2) Engine Mounts

(1) Spacer Sleeve

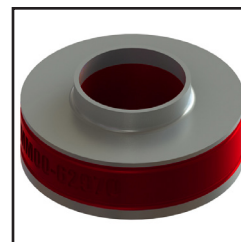


MM00-62970-HT

Engine/Cab Mount

Freightliner J3049-70

ID	OD	Thickness
1/2"	2 5/8"	13/16"



FREIGHTLINER

MM46-62000-HT

Engine Mount Kit, Rear

Century Class

Freightliner BCD 27330 1 Upper Mount

Freightliner BCD 27330 2

Freightliner BCD 28805 1 Lower Mount

Qty per Vehicle: 2

Contains:

- (2) Upper Mounts
- (2) Lower Mounts
- (2) Bolts
- (4) Washers
- (2) Locknuts



MM46-62002-HT

Engine Mount Kit, Front

Century Class

Freightliner BCD 26704-1 Lower Mount

Freightliner BCD 27651 1 Upper Mount

Freightliner BCD 27651 2 Upper Mount

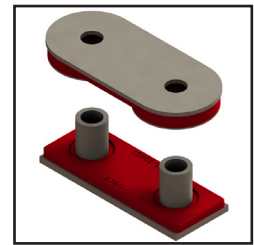
Freightliner BCD 27651 3 Upper Mount

Freightliner BCD 28945-1 Lower Mount

Qty per Vehicle: 1

Contains:

- (1) Upper Mount
- (1) Lower Mount



MM46-62004-HT

Engine Mount Kit, Front

Cascadia & Coronado

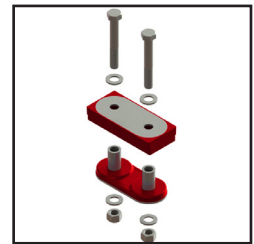
Freightliner J21246-60

Freightliner J21247-21

Qty per Vehicle: 1

Contains:

- (1) Upper Mount
- (1) Lower Mount
- (2) 3/4" Bolts
- (2) 3/4" Locknuts
- (4) 3/4" Flat Washers



MM46-62005-HT

Engine Mount Kit w/Hardware, Front

Century Class

Freightliner BCD 26704-1 Lower Mount

Freightliner BCD 27651 1 Upper Mount

Freightliner BCD 27651 2 Upper Mount

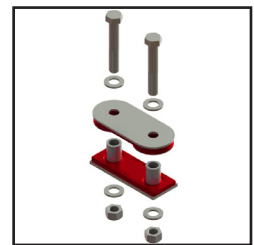
Freightliner BCD 27651 3 Upper Mount

Freightliner BCD 28945-1 Lower Mount

Qty per Vehicle: 1

Contains:

- (1) Upper Mount
- (1) Lower Mount
- (2) 3/4" Bolts
- (2) 3/4" Locknuts
- (4) 3/4" Flat Washers



MM46-62006-HT

Engine Mount Kit w/Hardware, Front

FLD120; FLD112 SD; FLB; FL80; M2 w/Mercedes engine

Freightliner 01-15047-000 Spacer Sleeve

Freightliner LOR SSB33 1001 7 Upper Mount

Freightliner LOR SSB33 1001 8 Lower Mount

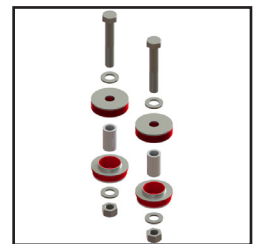
Freightliner SSB3310017 Upper Mount

Freightliner SSB3310018 Lower Mount

Qty per Vehicle: 1

Contains:

- (2) Upper Mount
- (2) Lower Mount
- (2) Spacer Sleeve
- (2) Bolts
- (2) Locknuts
- (4) Flat Washers



FREIGHTLINER

MM46-62417-HT

Engine Mount Kit w/Hardware, Rear

120 Conventional XL; FLD112 SD, Conventional;
FLD120 SD, Conventional; FLD132 Classic XL

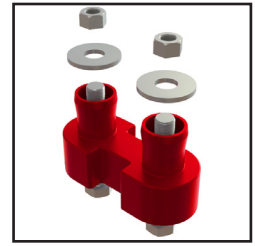
Freightliner LOR J20941 7

Freightliner LOR J20941-3-6

Qty per Vehicle: 1

Contains:

- (1) Engine Mounts
- (2) 5/8" Bolts
- (2) 5/8" Locknuts
- (2) Washers



MM75-62401-HT

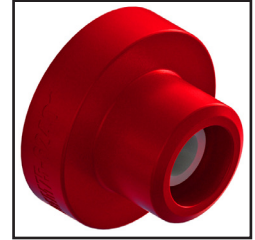
Engine Mount, Front

Freightliner LOR CB1125 2

Freightliner M700 50NR

Qty per Vehicle: 2

Length	ID	OD-Large	OD-Small
2 1/2"	13/16"	3 3/4"	2 1/4"

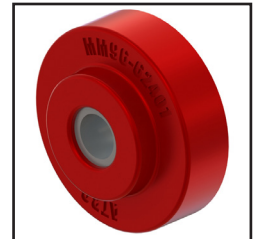


MM96-62401-HT

Engine Mount

Freightliner HUN 12004 3401

Height	ID	OD-Large	OD-Small
1 3/16"	5/8"	3"	1 27/32"

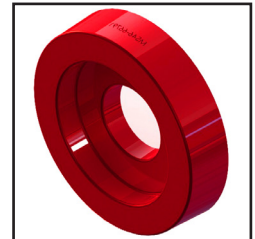


MS46-66791-HT

Engine Mount

Freightliner LOR J19791 1

ID	OD	Misc. Dimensions
1.35"	3.94"	Thickness: .88"

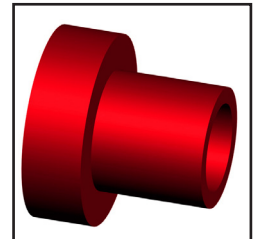


PL1003-HT

Engine Mount

Freightliner CBA/24-650-17

Length	ID	OD-Large	OD-Small
2 1/8"	5/8"	2 3/8"	1 1/2"



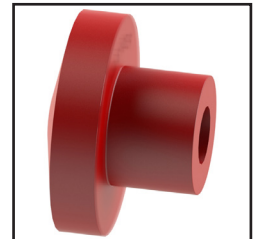
PL1013-HT

Engine Mount

FL120

Freightliner J6198-2

Length	ID	OD-Large	OD-Small
2 5/8"	13/16"	3 3/4"	2 1/16"

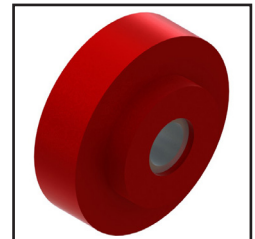


PL1015-HT

Radiator/Engine Mount

Freightliner J7165-1

Length	ID	OD-Large	OD-Small
1 3/16"	5/8"	3"	1 13/16"



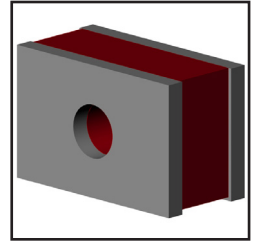
FREIGHTLINER

PL1052-HT

Engine Mount

Freightliner A01-11166-000

Length	Width	Height	ID
2 13/16"	1 13/16"	1 3/8"	3/4"



PL1105-HT

Engine Mount

Freightliner CBA28-1050

Length	ID	OD-Large	OD-Small
2 1/8"	13/16"	2 13/16"	1 5/8"

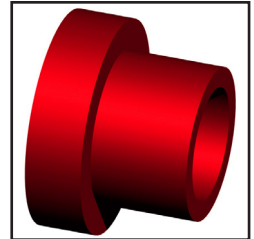


PL1107-HT

Exhaust Mount/Insulator Bushing

Freightliner CB1121-10

Length	ID	OD-Large	OD-Small
1 1/4"	9/16"	1 3/4"	1 1/4"



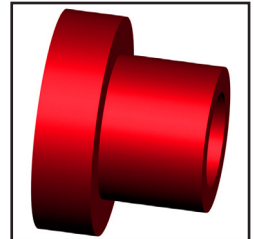
PL1110-HT

Engine Mount

Freightliner J6210-41

Freightliner J6210-49

Length	ID	OD-Large	OD-Small
2 1/4"	11/16"	3"	2"



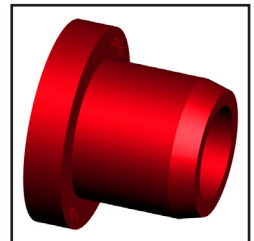
GMC

PL1086-HT

Engine Mount

GMC 702727

Length	ID	OD-Large	OD-Small
2 5/8"	11/16"	3 1/4"	2 1/4"

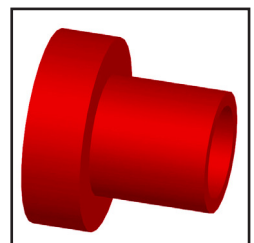


PL1088-HT

Engine Mount

GMC 15506936

Length	ID	OD-Large	OD-Small
3 3/16"	5/8" bolt	2 3/8"	1 1/2"



INTERNATIONAL

CM55-616C5-HT

Cab Mount

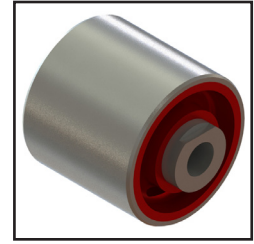
Day Cab

International 3595976C4

International 3595976C5

Qty per Vehicle: 2

Length	OD	Bolt
3 1/4"	2 7/8"	5/8"



CM55-61980-HT

Cab Mount

2009 Prostar

International 3595980

International 3595980C1

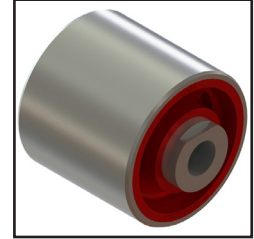
International 3595980C2

International 3595980C3

International 3595980C4

Qty per Suspension: 4

Sleeve Length	Pin Length	OD	Pin ID
2.6"	3.27"	2.875"	.65"



MM55-62002-HT

Engine Mount Kit, Front

Model 3900

International 1664724C1

International 1664724C2

International 1664724C3

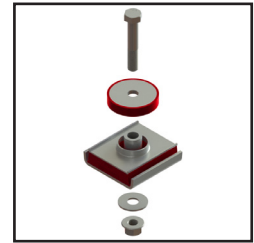
International 1664724C4 Upper Snubber

Qty per Vehicle: 4

Contains:

- (1) Lower Mount
- (1) Upper Mount
- (1) Bolt M16-2.0x90mm
- (1) Flat Washer, M16
- (1) Flanged Locknut, M16-2.0

Tapered Urethane



MM55-62003-HT

Engine Mount Kit, Front

1000; 1600; 2500; 2600; 3200; 3400; 3600;

3800; 4000; 4200-4900; 7100; 8200; 8300

International 1664723C1 Lower

International 1664723C2 Lower

International 1664723C3 Lower

International 1664726C2 Upper Snubber

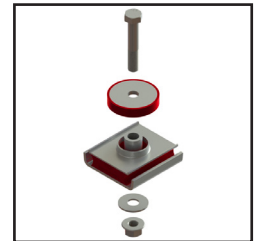
Qty per Vehicle: 2

Contains:

- (1) Lower Mount
- (1) Upper Mount
- (1) Bolt
- (1) Flat Washer
- (1) Flanged Locknut

Upper Thickness: 9/16"

Curved Urethane



MM55-62004-HT

Engine Mount Kit, Rear

2500, 2600, 5500i, 5600i, 5900i, 7600, 7700,

8100, 8600, 9100, 9200, 9400, 9900 HX

Lonestar And Prostar Models

International 1664729C1 Upper Mount

International 1664729C2 Upper Mount

International 1664729C3 Upper Mount

International 1664729C4 Upper Mount

International 1664729C5 Upper Mount

International 1664729C7 Upper Mount

Contains:

- (1) Lower Mount
- (1) Upper Mount
- (1) Bolt Assembly

International 1664730C5 Lower Mount

International 1664730C7 Lower Mount

International 2014777C2 Lower Mount

International 3613279C2

International 3613279C3

International 3613279C4

Qty per Vehicle: 2



INTERNATIONAL

MM55-62005-HT

Engine Mount Kit, Rear

2500, 2600, 5500i, 5600i, 5900i, 7600, 7700,
8100, 8600, 9100, 9200, 9400, 9900 HX

Lonestar And Prostar Models

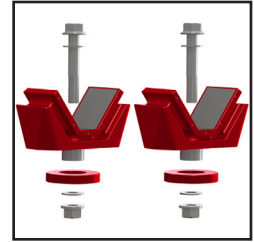
International 1664729C1 Upper Mount
International 1664729C2 Upper Mount
International 1664729C3 Upper Mount
International 1664729C4 Upper Mount
International 1664729C5 Upper Mount
International 1664729C7 Upper Mount

Contains:

- (2) Lower Mounts
- (2) Upper Mounts
- (2) Bolt Assemblies

International 1664730C5 Lower Mount
International 1664730C7 Lower Mount
International 2014777C2 Lower Mount
International 3613279C2
International 3613279C3
International 3613279C4

Qty per Vehicle: 2

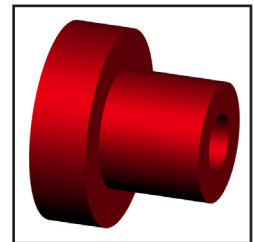


PL1009-HT

Cab/Engine Mount

International 476869C1

Length	ID	OD-Large	OD-Small
2 7/16"	5/8"	3"	1 13/16"

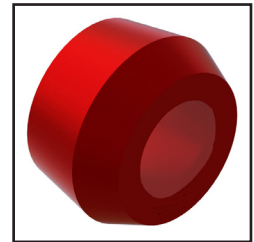


PL1025-HT

Shock Bushing

International 140149
Qty per Vehicle: 8

Length	ID	OD-Large	OD-Small
7/8"	3/4"	1 9/16"	1 7/16"

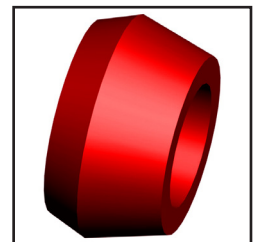


PL1026-HT

Shock Bushing

International 401754
Qty per Vehicle: 8

Length	ID	OD-Large	OD-Small
1"	1 1/16"	1 7/8"	1 1/2"

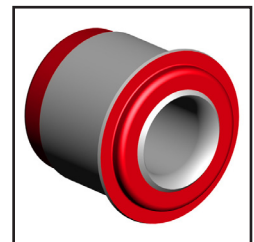


PL1048-HT

Engine Mount

International 503579C1
International 503837C1
International 507569C91

Length	ID	OD-Large	OD-Small
3 1/8"	1 1/2"	3 7/16"	3"

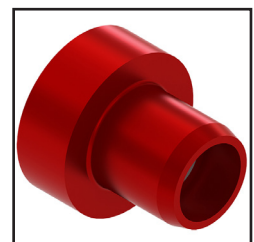


PL1055-HT

Engine Mount

International 1811
International 470031C2
International EE14003053

Length	ID	OD-Large	OD-Small
2 3/8"	11/16"	2 3/8"	1 1/2"



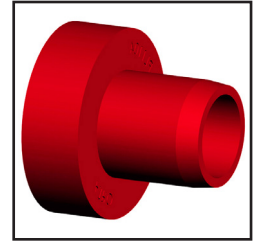
INTERNATIONAL

PL1104-HT

Engine Mount

International 14003052
 International 4170
 International 479237C1
 International 583955C1

Length	ID	OD-Large	OD-Small
2 5/8"	1 1/16"	2 7/8"	1 5/8"

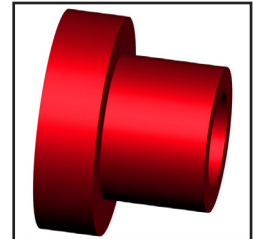


PL1110-HT

Engine Mount

International 753997C91
 International 753997C92
 International 753997C93

Length	ID	OD-Large	OD-Small
2 1/4"	1 1/16"	3"	2"

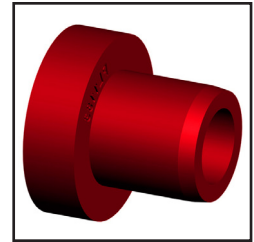


PL1183-HT

Engine Mount

International 462300C2

Length	ID	OD-Large	OD-Small
2 1/8"	5/8"	2 3/8"	1 1/2"



KENWORTH

EM75-61001-HT

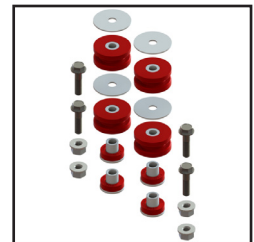
Air Cooler Mount Kit

T800 (2008-2010)

Kenworth N4751001

Contains:

- (4) Polyurethane Mount Bushings
- (4) Polyurethane Washers
- (4) Flange Bolts
- (4) Flange Locknuts
- (4) Flat Washers



EM75-69000-HT

Exhaust Mount Bushing Kit

Kenworth M13-6001 Bushing

Contains:

- (2) Exhaust Mount Bushings
- (1) Shaft
- (2) Washers
- (2) E-Clips



EM75-69001-HT

Exhaust Mount Bushing

Kenworth M13-6001

ID	OD-Large	OD-Small
7/16"	1 3/4"	1 1/8"



KENWORTH

KT59-62003-HT

Engine Mount Kit w/Hdwr, Front

T-600/W-900

Kenworth K066-404 Lower Position

Kenworth K066-406 Upper Position

Kenworth K066-423 Front Engine Mount

Qty per Vehicle: 1

Contains:

- (2) Upper Mounts
- (2) Lower Mounts
- (2) Bolts
- (2) Nuts
- (4) Washers



KT59-62004-HT

Engine Mount Kit w/Hdwr, Rear

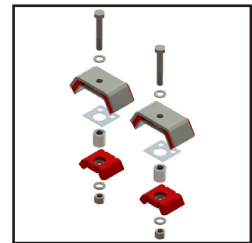
T600, T800

Kenworth K066-377 No Hardware

Kenworth K066-421 No Hardware

Contains:

- (2) Upper Mounts
- (2) Lower Mounts
- (2) Wear Plates
- (2) Wear Sleeves
- (2) Bolts 20mm x 120mm
- (4) Flat Washers
- (2) Locknuts



Both mounts must be ATRO hi-temp poly engine mounts.

Do not mix w/rubber or non-compatible poly mounts

MM59-62005-HT

Engine Mount Kit, Front

T-600/W-900

Kenworth K066-404 Lower Position

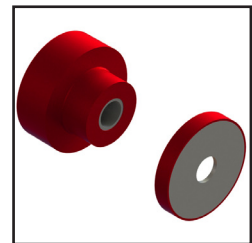
Kenworth K066-406 Upper Position

Kenworth K066-423 Front Engine Mount

Qty per Vehicle: 2

Contains:

- (1) Upper Mount
- (1) Lower Mount



MM59-62006-HT

Engine Mount Kit, Front

T800 w/Cat C13 engine

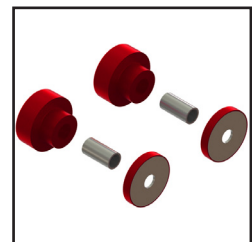
Kenworth K066-404 Lower Position

Kenworth K066-407 Upper Position

Qty per Vehicle: 1

Contains:

- (2) Upper Mounts
- (2) Lower Mounts



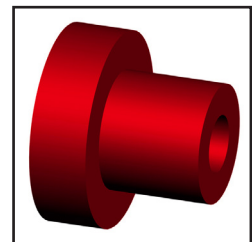
PL1009-HT

Cab/Engine Mount

Kenworth K066-176

Kenworth M600

Length	ID	OD-Large	OD-Small
2 7/8"	5/8"	3"	1 13/16"



PL1011-HT

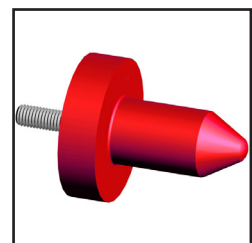
Hood Pin

Kenworth K179-528

Kenworth K179D450

Qty per Vehicle: 2

Length	Thread Size	OD-Large	OD-Small
4 1/8"	1/2" - 13	3 1/4"	1 1/2"



Nut Included

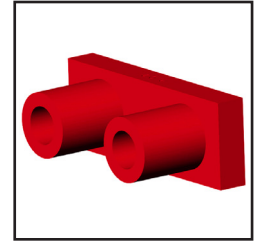
KENWORTH

PL1012-HT

Engine Mount

Kenworth K066-247
 Kenworth K066-282
 Kenworth K066-288
 Kenworth K066-296
 Kenworth K066-320
 Kenworth M506-70NR

Length	ID	OD	Height	Width
5 1/2"; 3" c-c	1 1/16"	1/2"	2 3/8"	2"

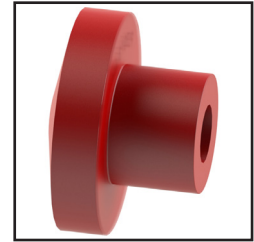


PL1013-HT

Engine Mount

3406 Caterpillar
 Kenworth K066-229
 Kenworth M700

Length	ID	OD-Large	OD-Small
2 5/8"	13/16"	3 3/4"	2 1/16"

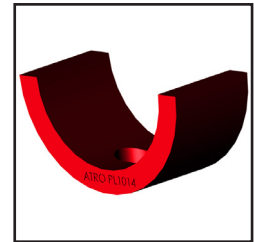


PL1014-HT

Engine Mount

Kenworth K174-555

Length	Width	ID
4 1/2"	2"	3 1/2"

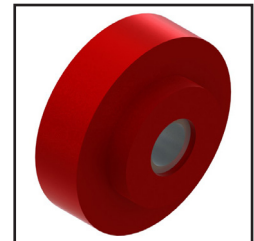


PL1015-HT

Radiator/Engine Mount

377, 378, 379, T600, T800, W900
 Kenworth 07-3286RUB
 Kenworth K066-228
 Kenworth M601
 Kenworth M601-70NR

Length	ID	OD-Large	OD-Small
1 3/16"	5/8"	3"	1 13/16"

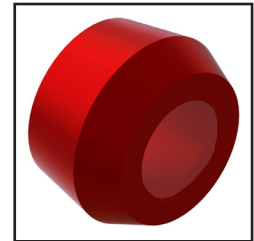


PL1025-HT

Shock Bushing

Kenworth 5316702
 Qty per Vehicle: 8

Length	ID	OD-Large	OD-Small
7/8"	3/4"	1 9/16"	1 7/16"

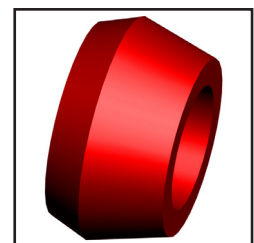


PL1026-HT

Shock Bushing

Kenworth 73D2002
 Qty per Vehicle: 8

Length	ID	OD-Large	OD-Small
1"	1 1/16"	1 7/8"	1 1/2"

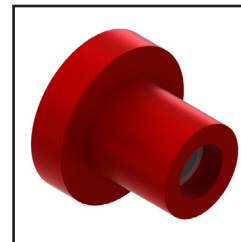


KENWORTH

PL1063-HT

Radiator Mount
Kenworth M500-70NR

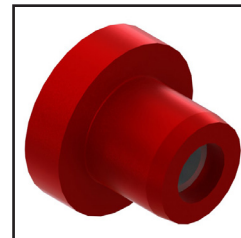
Length	ID	OD-Large	OD-Small
2 3/16"	5/8"	2 1/2"	1 1/2"



PL1070-HT

Engine Mount
Kenworth M501
Kenworth M501-70NR

Length	ID	OD-Large	OD-Small
2"	5/8"	2 1/2"	1 1/2"

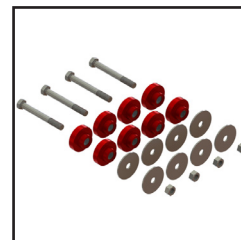


MACK

KT62-62216-HT

Insulator Kit
Mack Transmission
Mack 204SX216
Qty per Vehicle: 1

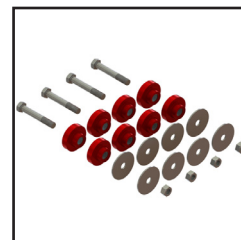
Contains:
(8) Transmission Mounts
(8) Washers
(4) Bolts, 3/4"-16 x 6 1/2"
(4) Lock Nuts



KT62-62389-HT

Insulator Kit
Fuller & Allison Transmission
Mack 204SX389
Qty per Vehicle: 1

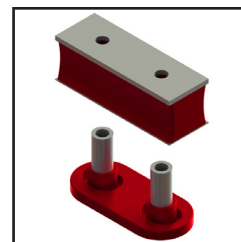
Contains:
(8) Transmission Mounts
(8) Washers
(4) Bolts, 3/4"-16 x 5"
(4) Lock Nuts



MM62-62002-HT

Engine Mount Kit, Front
CH Models
Mack 20QL322 Upper Mount
Mack 20QL329 Lower Mount
Mack 25172757

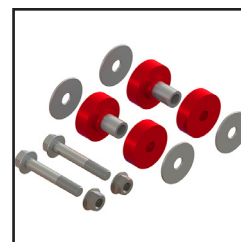
Contains:
(1) Upper Mount
(1) Lower Mount



MM62-622M2-HT

Engine Mount Kit w/Hdwr, Front
Mack 20QL312M2 only 1 mount
Qty per Vehicle: 1

Contains:
(4) Bushings
(4) Washers
(2) Inner Sleeve
(2) Bolts
(2) Lock Nuts



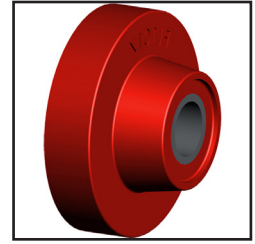
MACK

PL1017-HT

Transmission Mount

Mack 20QL1118A
Mack 20QL1175
Mack 25167342

Length	ID	OD-Large	OD-Small
1 1/2"	3/4"	3 3/16"	1 11/16"

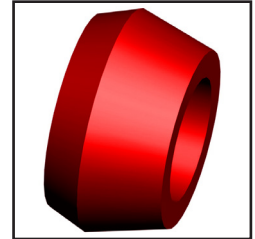


PL1026-HT

Shock Bushing

Mack 14QK136
Qty per Vehicle: 8

Length	ID	OD-Large	OD-Small
1"	1 1/16"	1 7/8"	1 1/2"

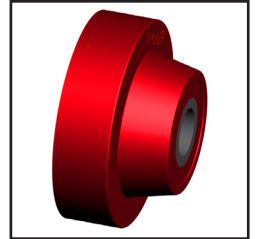


PL1091-HT

Engine Mount

Mack 20QL324M

Length	ID	OD-Large	OD-Small
1 15/16"	7/8"	3 3/4"	2"

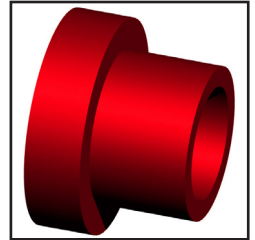


PL1107-HT

Exhaust Mount/Insulator Bushing

Mack 20QL231P1

Length	ID	OD-Large	OD-Small
1 1/4"	9/16"	1 3/4"	1 1/4"



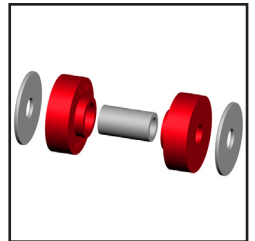
PL1131-HT

Engine Mount Kit, Front

Mack 20QL312M2
Qty per Vehicle: 1

Contains:

- (2) Polyurethane Bushings
- (2) Washers
- (1) Inner Sleeve



OSHKOSH

TM71-63130-HT

Tranmission Mount

Allison Transmission
Oshkosh RB3-1300
Qty per Vehicle: 2

Contains:

- (1) Upper Mount
- (1) Lower Mount
- (1) Spacer Tube

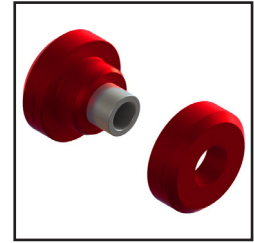


OSHKOSH

TM99-63516-HT

Engine/Transmission Mount
Oshkosh 2163220

Poly OAL	Sleeve OAL	Sleeve ID	OD-Large each part	OD-Small each part
1.94"	2"	15/16"	3/4"	1 5/8"

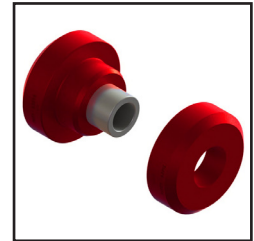


OTTAWA

TM99-63516-HT

Engine/Transmission Mount
Ottawa 90017516

Poly OAL	Sleeve OAL	Sleeve ID	OD-Large each part	OD-Small each part
1.94"	2"	15/16"	3/4"	1 5/8"

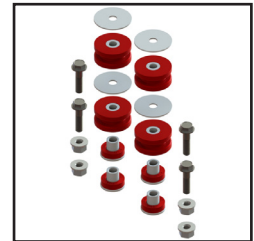


PETERBILT

EM75-61001-HT

Air Cooler Mount Kit
T800 (2008-2010)
Peterbilt N4751001

- Contains:**
- (4) Polyurethane Mount Bushings
 - (4) Polyurethane Washers
 - (4) Flange Bolts
 - (4) Flange Locknuts
 - (4) Flat Washers



EM75-69000-HT

Exhaust Mount Bushing Kit
Peterbilt M13-6001 Bushing

- Contains:**
- (2) Exhaust Mount Bushings
 - (1) Shaft
 - (2) Washers
 - (2) E-Clips



EM75-69001-HT

Exhaust Mount Bushing
Peterbilt M13-6001

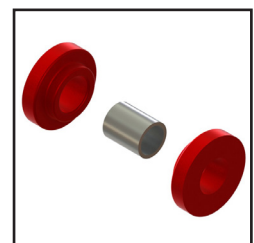
ID	OD-Large	OD-Small
7/16"	1 3/4"	1 1/8"



EM75-69096-HT

Exhaust/Radiator Mount;
Air to Air Bushing
Upper Exhaust: 357; 375-379; 385 Pre 1995 Standard
Peterbilt 13-03096

Flange Height	OD-Large	Nipple OD
1/4"	1 1/16"	3/4"



PETERBILT

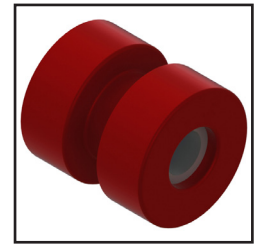
EM75-69656-HT

Exhaust Bushing

357; 375 through 379 & 385

Peterbilt 14-14656

Length	ID	OD-Large	OD-Small
1 3/8"	3/8"	1 1/4"	3/4"



MM00-62000-HT

Engine Mount Kit, Front

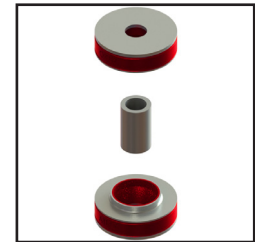
Peterbilt SSB33-1000-2

Qty per Vehicle: 2

Contains:

- (2) Engine Mounts
- (1) Spacer Sleeve

ID	OD	Thickness
3/4" Bolt	3"	13/16"



MM75-62001-HT

Engine Mount Kit, Rear

Models: 387; 379 w/CAT C12, C13;

320 w/Cummins

Peterbilt 0518713SPL Snubber Washer Only

Peterbilt 07-08003-003 Radiator Support

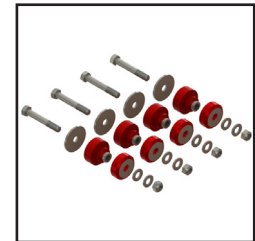
Peterbilt CB2203-72 Mount Only

Peterbilt MR1001 Mount Only

Qty per Vehicle: 1

Contains:

- (4) Engine Mounts
- (4) Nuts
- (4) Bolts
- (4) Snubber Washers
- (8) Washers



MM75-62370-HT

Engine Mount, Rear

Model 379 w/CAT C15 & C11 Engines

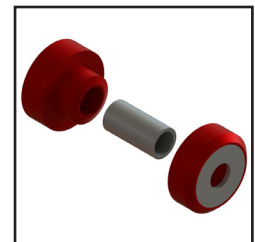
Peterbilt CB2203-70

Qty per Vehicle: 4

Contains:

- (1) Upper Mount
- (1) Lower Mount
- (1) Inner Sleeve

Sleeve ID	Washer ID	Large OD
3/4"	3/4"	2 9/16"



MM75-62372-HT

Engine Mount, Rear

Models: 387; 379 w/CAT C12, C13;

320 w/Cummins

Peterbilt 07-08003-003 Radiator Support

Peterbilt CB2203-72

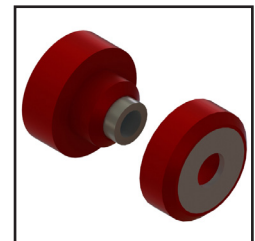
Peterbilt MR1001

Qty per Vehicle: 4

Contains:

- (1) Upper Mount
- (1) Lower Mount

ID-Sleeve	ID-Washer	Length	OD-Large	OD-Small
5/8"	3/4"	2 9/16"	2 9/16"	1 1/2"



MM75-62377-HT

Engine Mount, Rear

Older cabover engine models; 320 series

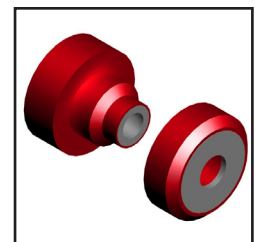
Peterbilt CB2203-77

Peterbilt CB2203-78

Contains:

- (1) Upper Mount
- (1) Lower Mount

ID-Sleeve	ID-Washer	Length	OD-Large	OD-Small
5/8"	3/4"	2 9/16"	2 9/16"	1 1/2"



PETERBILT

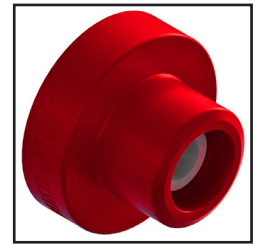
MM75-62401-HT

Engine Mount, Front

Peterbilt 05-16401

Qty per Vehicle: 2

Length	ID	OD-Large	OD-Small
2 1/2"	13/16"	3 3/4"	2 1/4"



MM75-62597-HT

Engine Mount Kit, Front

320 Series

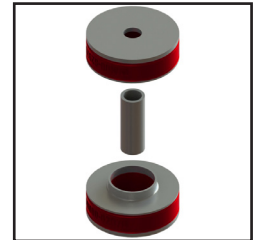
Peterbilt 05-17597

Contains:

(2) Engine Mounts

(1) Spacer Sleeve

Spacer Length	ID	OD	Thickness
1 13/16"	1/2"	2 5/8"	13/16"



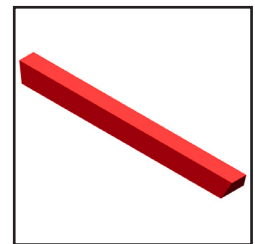
MM75-62748-HT

Engine Mount

Model 379 w/CAT engine

Peterbilt 05-00748

Length	Width	Height
8 1/8"	7/8"	9/16"

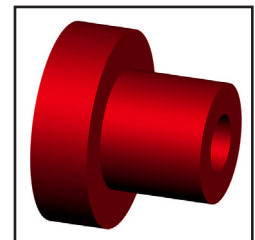


PL1009-HT

Cab/Engine Mount

Peterbilt 05-14794

Length	ID	OD-Large	OD-Small
2 7/16"	5/8"	3"	1 13/16"



PL1013-HT

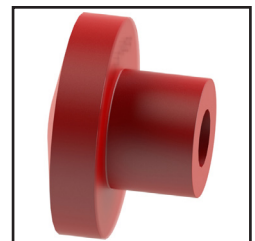
Engine Mount

3406 Caterpillar

Peterbilt 05-08969

Peterbilt 05-10103

Length	ID	OD-Large	OD-Small
2 5/8"	13/16"	3 3/4"	2 1/16"



PL1015-HT

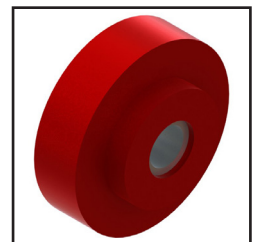
Radiator/Engine Mount

Radiator Mount - 377, 378, 379,

T600, T800, W900

Peterbilt 07-03286

Length	ID	OD-Large	OD-Small
1 3/16"	5/8"	3"	1 13/16"



PETERBILT

PL1018-HT

Engine Mount

Peterbilt 05-10197

Length	ID	OD-Large	OD-Small
2 3/8"	13/16"	2 3/4"	1 5/8"



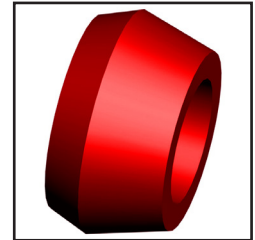
PL1026-HT

Shock Bushing

Peterbilt 2-00377

Qty per Vehicle: 8

Length	ID	OD-Large	OD-Small
1"	1 1/16"	1 7/8"	1 1/2"

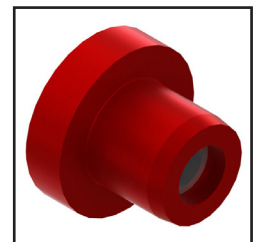


PL1070-HT

Engine Mount

Peterbilt 05-08968

Length	ID	OD-Large	OD-Small
2"	5/8"	2 1/2"	1 1/2"



PL1111-HT

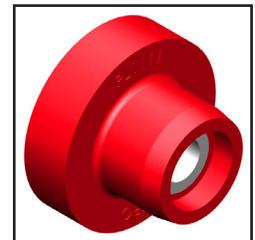
Engine Mount, Front

Peterbilt 05-16919

Peterbilt 05-16919-2

Qty per Vehicle: 2

Length	ID	OD-Large	OD-Small
2 7/16"	13/16"	3 5/8"	2 1/8"



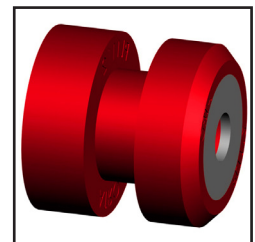
PL1112-HT

Engine Mount

Peterbilt 05-18263

Peterbilt CB2203-2

Length	ID	OD-Large
2 1/2"	3/4"	2 9/16"

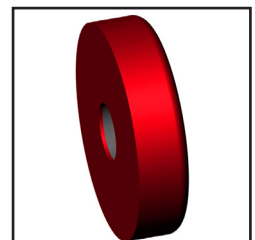


PL1120-HT

Engine Mount

Peterbilt 05-17224

Length	ID	OD
5/8"	11/16"	2 7/16"



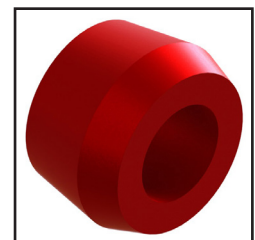
PL1126-HT

Radiator Bushing

Peterbilt 07-02252

Peterbilt 07-02552

Length	OD-Large	OD-Small
3/4"	1 3/16"	1 1/16"



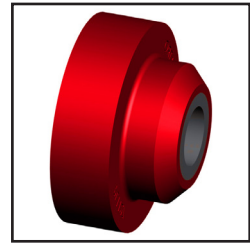
PETERBILT

PL1127-HT

Engine Mount

Peterbilt 05-17225

Length	ID	OD-Large	OD-Small
1 5/16"	1 1/16"	2 3/8"	1 5/8"



TH75-69000-HT

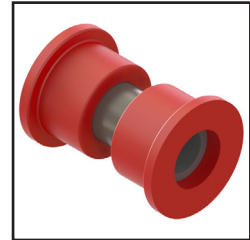
Lateral Control Sleeper

Rod Bushing

Model 387 with sleeper cab

Peterbilt fit is 29-0574 rod

Length	ID	OD-Large	OD-Small
1 5/16"	1 1/16"	2 3/8"	1 5/8"



STERLING TRUCK

MM00-62000-HT

Engine Mount Kit, Front

Sterling LOR SSB33 1000 2

Qty per Vehicle: 2

Contains:

- (2) Engine Mounts
- (1) Spacer Sleeve

ID	OD	Thickness
3/4" Bolt	3"	13/16"



MM46-62000-HT

Engine Mount Kit, Rear

Century Class

Sterling BCD 27330 1 Upper Mount

Sterling BCD 27330 2

Sterling BCD 28805 1 Lower Mount

Qty per Vehicle: 2

Contains:

- (2) Upper Mounts
- (2) Lower Mounts
- (2) Bolts
- (4) Washers
- (2) Locknuts



MM46-62002-HT

Engine Mount Kit, Front

Century Class

Sterling BCD 26704-1 Lower Mount

Sterling BCD 27651 1 Upper Mount

Sterling BCD 27651 2 Upper Mount

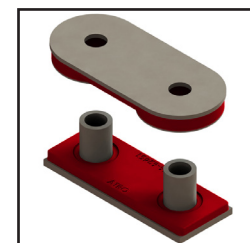
Sterling BCD 27651 3 Upper Mount

Sterling BCD 28945-1 Lower Mount

Qty per Vehicle: 1

Contains:

- (1) Upper Mount
- (1) Lower Mount



STERLING TRUCK

MM46-62005-HT

Engine Mount Kit w/Hardware, Front

Century Class

Sterling BCD 26704-1 Lower Mount

Sterling BCD 27651 1 Upper Mount

Sterling BCD 27651 2 Upper Mount

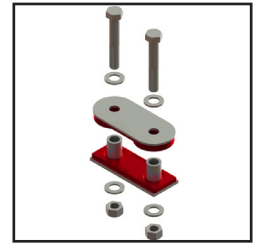
Sterling BCD 27651 3 Upper Mount

Sterling BCD 28945-1 Lower Mount

Qty per Vehicle: 1

Contains:

- (1) Upper Mount
- (1) Lower Mount
- (2) 3/4" Bolts
- (2) 3/4" Locknuts
- (4) 3/4" Flat Washers



MM46-62417-HT

Engine Mount Kit w/Hardware, Rear

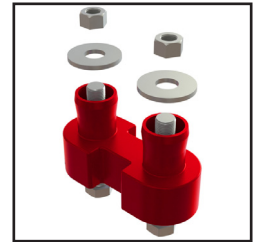
Sterling J20941-6

Sterling J20941-7

Qty per Vehicle: 1

Contains:

- (1) Engine Mounts
- (2) 5/8" Bolts
- (2) 5/8" Locknuts
- (2) Washers

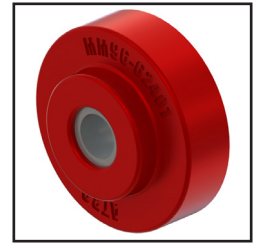


MM96-62401-HT

Engine Mount

Sterling HUN 12004 3401

Height	ID	OD-Large	OD-Small
1 3/16"	5/8"	3"	1 27/32"

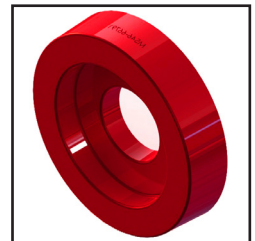


MS46-66791-HT

Engine Mount

Sterling LOR J19791 1

ID	OD	Misc. Dimensions
1.35"	3.94"	Thickness: .88"



VOLVO

MM96-62002-HT

Engine Mount, Front (Snubber)

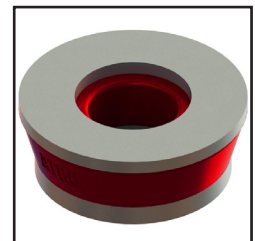
Volvo 12005-0002

Volvo 12005-3208

Volvo 3081659

Qty per Vehicle: 2

ID	OD	Thickness
5/8"	2 3/4"	1"



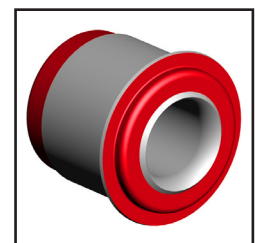
MM96-62657-HT

Engine Mount

Volvo 3081657

Qty per Vehicle: 2

Length	Width	Height	ID	OD-Small
3"	5.65"	3.5"	1 1/2"	3"



VOLVO

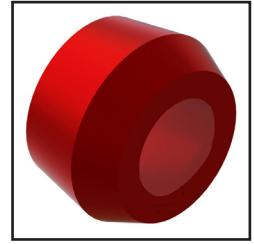
PL1025-HT

Shock Bushing

Volvo V8057131

Qty per Vehicle: 8

Length	ID	OD-Large	OD-Small
7/8"	3/4"	1 9/16"	1 7/16"

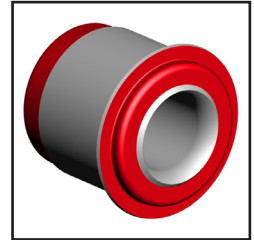


PL1048-HT

Engine Mount

Volvo 12004-0007

Length	ID	OD-Large	OD-Small
3 1/8"	1 1/2"	3 7/16"	3"

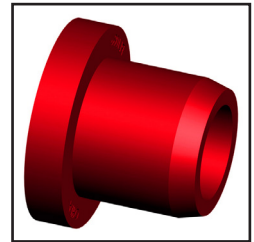


PL1086-HT

Engine Mount

Volvo 702727

Length	ID	OD-Large	OD-Small
2 5/8"	1 1/16"	3 1/4"	2 1/4"

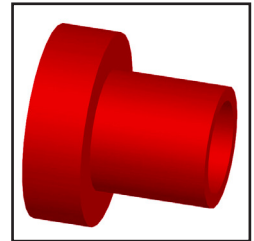


PL1088-HT

Engine Mount

Volvo 15506936

Length	ID	OD-Large	OD-Small
3 3/16"	5/8" bolt	2 3/8"	1 1/2"



WESTERN STAR

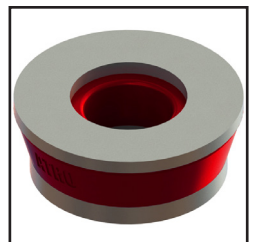
MM96-62002-HT

Engine Mount, Front (Snubber)

Western Star 12005-0002

Qty per Vehicle: 2

ID	OD	Thickness
5/8"	2 3/4"	1"



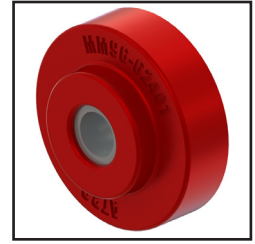
WESTERN STAR

MM96-62401-HT

Engine Mount

Western Star 12004-3401

Height	ID	OD-Large	OD-Small
1 3/16"	5/8"	3"	1 27/32"



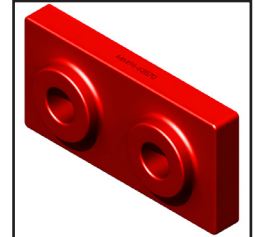
MM96-62870-HT

Engine Mount, Upper

Western Star 04-9009997 Hard

Western Star 12004-3402 Soft

ID	OD (nipple)	Length	Height	Width
5/8"	1 7/8"	6"	3/4"	3"



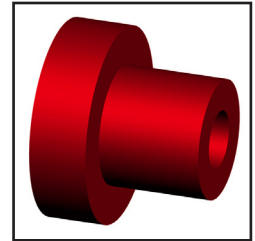
Note: use with (2) PL1015-HT Lower Engine Mounts

PL1009-HT

Cab/Engine Mount

Western Star 66001-3403

Length	ID	OD-Large	OD-Small
2 7/16"	5/8"	3"	1 13/16"

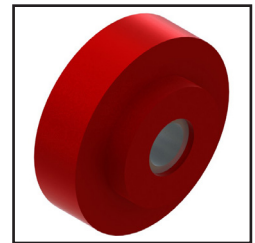


PL1015-HT

Engine Mount, Lower

Western Star 04-9009996

Length	ID	OD-Large	OD-Small
1 3/16"	5/8"	3"	1 13/16"



Note: use with (1) MM96-62870-HT Upper Engine Mount

PL1111-HT

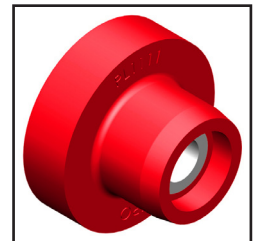
Engine Mount, Front

Western Star 05-16919

Western Star 12005-3403

Qty per Vehicle: 2

Length	ID	OD-Large	OD-Small
2 7/16"	13/16"	3 5/8"	2 1/8"

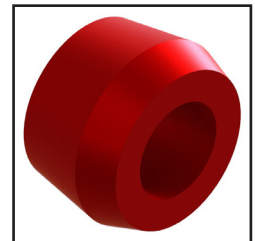


PL1126-HT

Radiator Bushing

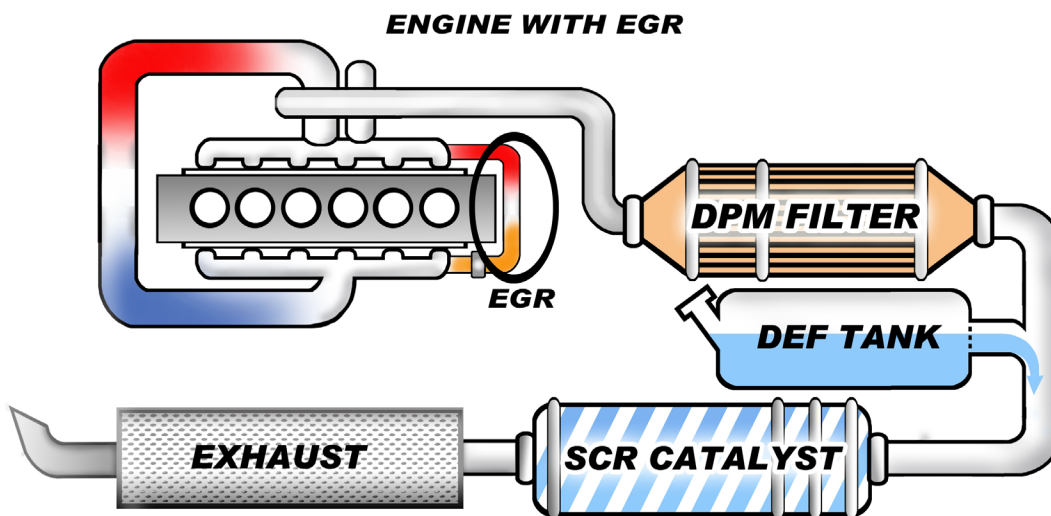
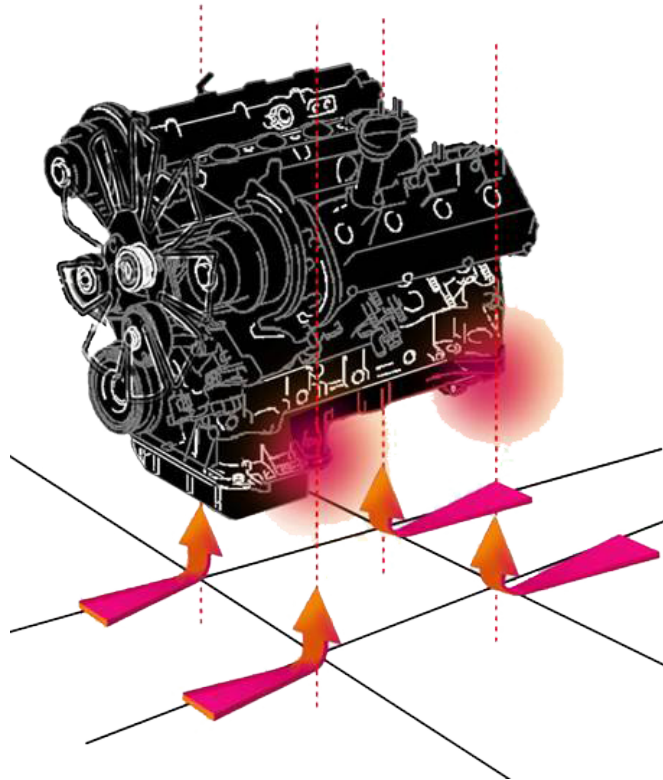
Western Star 656-215

Length	OD-Large	OD-Small
3/4"	1 3/16"	1 1/16"



WHY ENGINES ARE RUNNING HOTTER

Trucks equipped with an engine recirculation system, SCR or ERG, overburden the cooling system by 15% - 30%. Under hood compartment temperatures rise dramatically. The high temperature conditions greatly reduce the product life cycles of standard mounts.



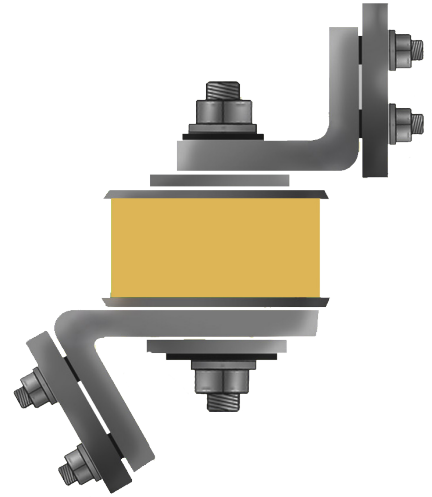
Under hood temperatures rise as the cooling system is over-burdened with the additional task of cooling the recirculating exhaust gas.

EXTREME HEAT CAUSES ENGINE MOUNT FAILURE

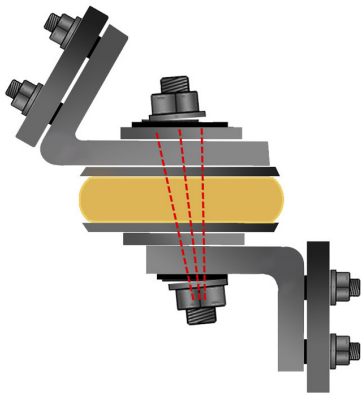
What happens to a motor mount on a heavy duty vehicle, under excessive heat?

When heavy truck manufacturers began installing EGR/SCR systems, there was an immediate surge in engine compartment temperatures. Motor mounts started failing at a much higher rate. Up until now, rubber and polyurethane used in the manufacture of motor mounts had not been designed to withstand these elevated heat levels.

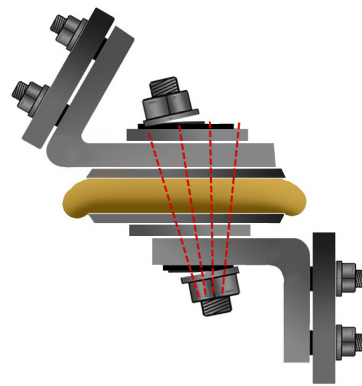
With the full weight of the engine bearing down on the mount, the long hours, stress and extreme temperature take their toll on the rubber or poly material. As they deteriorate, these materials becomes less and less able to absorb the shocks and vibration. Over time, this loss of support can result in stress on the drivetrain.



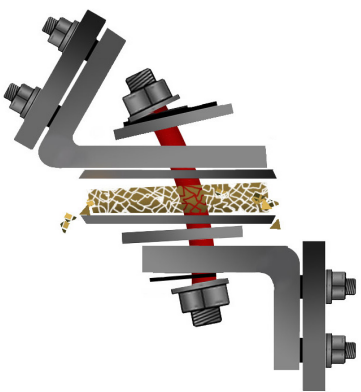
As the temperature rises in the engine compartment, loss of the material's properties can cause it to thin and bulge out the sides. The components of the motor mount assembly may become loose over a period of time, depending on the ruggedness of the job.



As the truck continues to operate under high heat, the material loses volume, becomes jelly-like and there is increased play in the motor mount bracketry. There may be noticeable load shifts as the motor is no longer firmly being held in place. Stress may begin to be felt by the various drivetrain components.



In the worst scenario, heat related motor mount failure can end up causing the engine to sag or tilt to the point of making contact with the walls of the engine compartment.

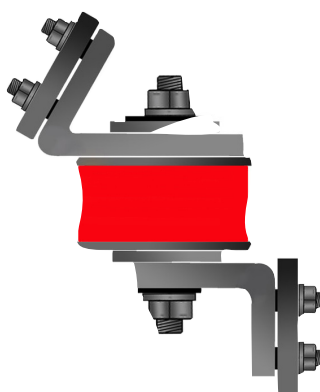


If left unhandled, it is possible damage to the transmission and differential can occur.

ATRO's High Temperature Motor Mount Line for heavy duty vehicles

ATRO developed polymers that withstand extreme heat in the 300°F range and have replaced the rubber or polyurethane materials that can fail at 200°F.

ATRO's material maintains its physical properties throughout the load, heat and stress. End of problem!



ATRO

ENGINEERED SYSTEMS

6 Bolte Lane
St. Clair, Missouri 63077 | U.S.A.
800.325.6114 | Fax 866.920.2005
ATROBUSHING.COM



Impervious to:

- Oil/Grease
- Brine
- Cleaning Solutions
- Hydraulic Fluids
- Diesel Fuel

Rubber Deteriorates



- Engineered to Function
- Providing Peak Performance
- Improving Ride Quality
- Absorbs Shock or Transfers Energy
- Exceeds OE Specs
- Longer Lasting Parts



ATRO Polyurethane vs Rubber

- 2-5 Times Stronger
- Rebound & Compression
- Tensile & Tear Strength
- Elongation Properties
- Ranging Durometer

With ATRO behind you,
Drive forward.

ATROBUSHING.COM

