

ATRO

Parts Guide

Freightliner

Cab & Underhood
Carrier Bearings
High Temp Mounts
Steer King
Suspension
Torque Rods



ATRO Parts. Performance that drives your success.

ATRO, LLC | 6 Bolte Lane | St. Clair, MO 63077 USA | Phone (800) 325-6114

www.atrobushing.com

© 2024 ATRO, LLC

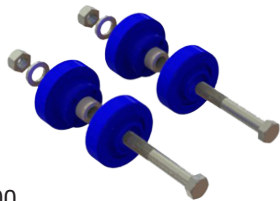
Cab and Underhood

CM46-61001

Cab Mount Kit

Contains:

- (2) CM46-61890
- (2) CM46-61891
- (2) 3/4" x 5" Grade 8 Hex Head Bolts
- (2) 3/4" Flat Washers
- (2) 3/4" Locknuts



Freightliner: 681-891-00-01, 18-43636-000, 681-890-00-01

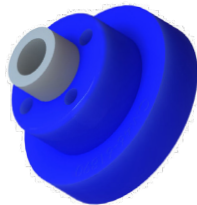
CM46-61890

Cab Mount (Upper)

OD: 3.3"

H: 2.6"

Freightliner: 681-890-00-01



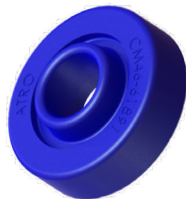
CM46-61891

Cab Mount, Lower

ID: 1.25"

OD: 3.8"

Freightliner: 681-891-00-01, 18-43637-000



HM46-64021

Grill Mount

MISC: 1.1/4" Thread

Freightliner: 17-13021-000



HL46-64480

Hood Latch Kit

Contains:

- (1) HL46-64434
- (1) HL46-64435

Freightliner: 17-12348-000, 17-12434-000 (catch), 17-12438-00 (no catch)



HL46-64434

Hood Latch Catch

L: 5"

Freightliner: 17-12434-000



HL46-64435

Hood Latch

L: 11 1/4"

Freightliner: 17-12435-000



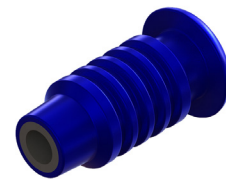
HM46-64975

Hood Hinge Bushing

ID: .5"

L: 3"

Freightliner: A17-13975-000



ATRO Part #	Part Description	Cross Reference
CM46-61384	Cab Mount Assembly	A1840099000, 18-45384-000
CM46-61769	Cab Mount Bushing	18-42727-000, 18-34678-000, 18-41005-000
CM46-61891	Cab Mount, Lower	18-43637-000, 681-891-00-01
CM46-61922	Cab Mount Bushing & Bracket Assembly	18-59922-000
CM94-61875	Cab Mount (Front)	LOR CB2204 146
HL46-64530	Hood Latch Kit, Left	A17-15553-000
HL46-64531	Hood Latch Kit, Right	A17-15553-001
HL46-64650	Hood Latch Kit, Left	17-12435-000, 17-12434-000
HL46-64651	Hood Latch Kit, Right	17-12435-001, 17-12434-001H
HM46-64177	Hood Bumper	J11729 177
HM46-64877	Hood Bumper	17-13877-000
HM94-64438	Hood Mount	67009-3438

CR00-67661

Carrier Bearing Assembly, Self-Aligning

Bearing Angular Allowance: +/-10 degrees
Series 1810

Assembly:

Height: 7-5/8"

Width: 3-3/4"

Length: 10"

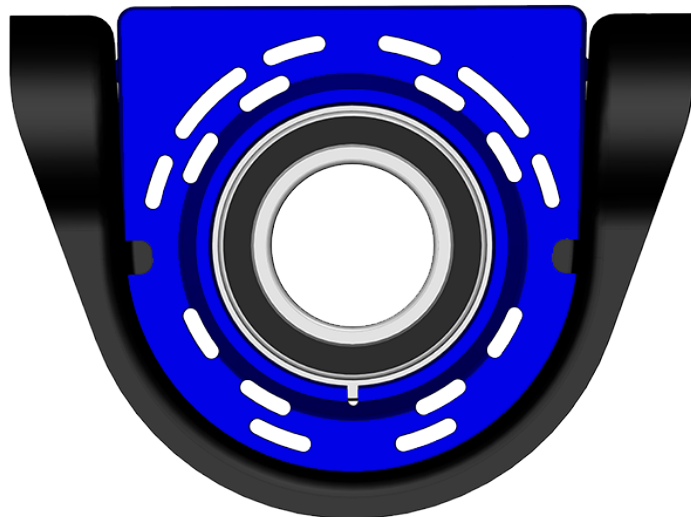
Bearing:

Bearing ID: 60mm

Center Height: 3-3/8"

Bolt Holes: 8 5/8" c-c

Bolt Size: 1/2"



Dana-Spicer: 10094142

Meritor: CB210661-1XSA

Features & Benefits

Polyurethane

- Chemically Resistant
- Vibration Absorbing

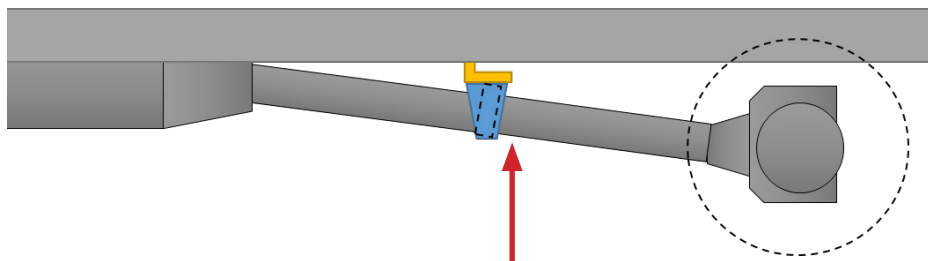
Patented Pivoting Bearing

- ± 10° of Articulation
- Sealed
 - Prevents Contamination
 - Retains Lubricant

Heavy Duty Steel Housing

- 7 Gauge Steel

Importance of the Self-Aligning Feature



With the ATRO self-aligning carrier bearing assembly, there is no need to shim because the center is allowed to pivot + or - 10 degrees.*

This saves money and time on the installation ... less parts plus no need to be as precise due to the range of articulation provided by the new carrier bearing.

* Proper driveline angle must be maintained.

CR00-67825

Carrier Bearing Assembly

Series 1810

Assembly:

Height: 7 1/4"

Width: 3"

Length: 10"

Bearing:

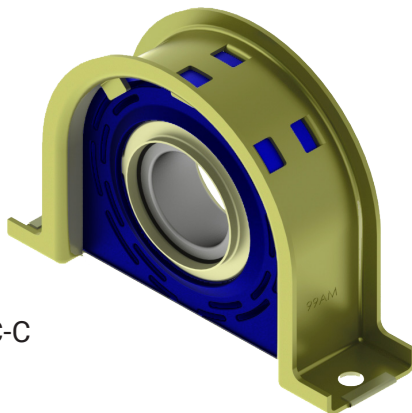
Bearing ID: 60mm

Center Height: 3 1/4"

Bolt Holes: 8 5/8" C-C

Bolt Size: 1/2"

Dana-Spicer: 210661-1X



CR00-67121

Carrier Bearing Assembly

Series 1710

Assembly:

Height: 9 1/4"

Width: 2 1/4"

Length: 10"

Bearing:

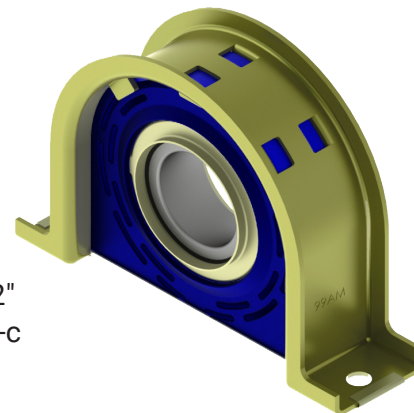
Bearing ID: 50mm

Center Height: 2 25/32"

Bolt Holes: 7 5/8" c-c

Bolt Size: 1/2"

Dana-Spicer: 210121-1X



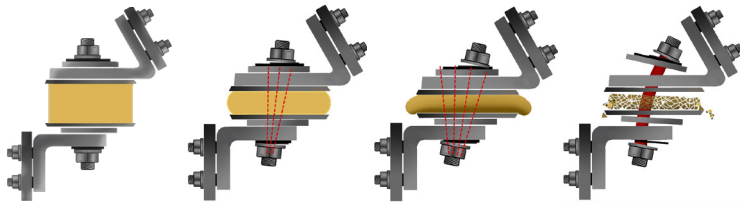
High Temp Mounts

Why use ATRO's High Temp Engine Mounts?

EGR/SCR Systems increase underhood temperatures.

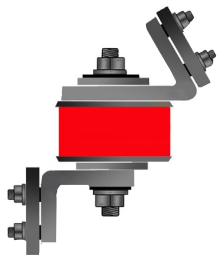
ATRO's High Temp Polyurethane is the ONLY solution in the Industry for Underhood conditions.

Watch what happens when a standard engine mount is exposed to excessive heat.



ATRO's High Temp Polyurethane benefits:

- Tested at 300 degrees continuous temperature
- Higher tensile strength
- Improved vibration isolation
- Resistant to chemical attack



ATRO's High Temperature Engine Mount Line for heavy duty vehicles

ATRO developed polymers that withstand extreme heat in the 300°F range and have replaced the rubber or polyurethane materials that can fail at 200°F. ATRO's material maintains its physical properties throughout the load, heat and stress.

Many ATRO's Parts are available in Kits!

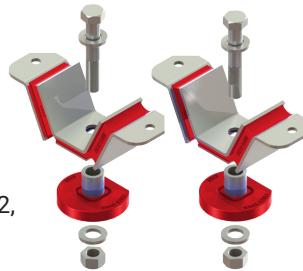
MM46-62000-HT

Engine Mount Kit (Rear), HT

Contains:

- (2) MM46-62051-HT
- (2) MM46-62301-HT
- (2) Bolts - 3/4"-16 x 4.5" Grade 8
- (4) Washers
- (2) Locknuts

Freightliner: BCD 27330 1, BCD 27330 2, BCD 28805 1



MM46-62002-HT

Engine Mount Kit, Front, HT

Contains:

- (1) MM46-62451-HT
- (1) MM46-62651-HT

Freightliner: BCD 26704-1, BCD 27651 1, BCD 27651 2, BCD 27651 3, BCD 289451



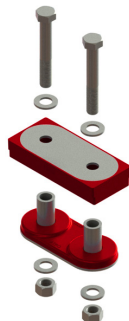
MM46-62004-HT

Engine Mount Kit w/Hardware (Front), HT

Contains:

- (1) MM46-62660-HT
- (1) MM46-62721-HT
- (2) 3/4" Bolts
- (2) 3/4" Locknuts
- (4) 3/4" Flat Washers

Freightliner: J21246-60, J21247-21, LOR J21246 60, LOR J21247 21



MM46-62005-HT

Engine Mount Kit w/Hardware (Front), HT

Contains:

- (1) MM46-62451-HT
- (1) MM46-62651-HT
- (2) BOLT, 3/4"-16 X 4 1/2", GR 8
- (2) 3/4" Locknuts
- (4) 3/4" Flat Washers

Freightliner: BCD 26704-1, BCD 276511, BCD 27651 2, BCD 27651 3, BCD 28945-1



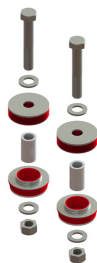
MM46-62006-HT

Engine Mount Kit w/Hardware (Front), HT

Contains:

- (2) MM46-62003-HT
- (2) Spacer Sleeve
- (2) Bolts
- (2) Locknuts
- (4) Flat Washers

Freightliner: 01-15047-000, LOR SSB33 1001 7, LOR SSB33 1001 8, SSB3310017, SSB3310018, 13371-45



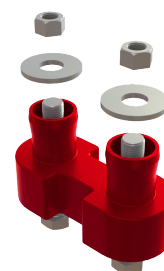
MM46-62417-HT

Engine Mount Kit (Rear), w/Hardware, HT

Contains:

- (1) MM46-62416-HT
- (2) 5/8" Bolts
- (2) 5/8" Locknuts
- (2) Washers

Freightliner: J209413, J20941 36, J209414, J209415120, J2094167, LOR J20941 7, LOR J2094416



ATRO Part #	Part Description	Cross Reference
MM46-62051-HT	Engine Mount, Lower (Rear), HT	BCD28805 1
MM46-62120-HT	Motor Mount, (Upper) HT	J20120 14
MM46-62222-HT	Engine Mount, HT	CB1122 2
MM46-62301-HT	Engine Mount, Upper (Rear), HT	BCD27330 1
MM46-62416-HT	Engine Mount (Rear), HT	J20941 13, J20941 36, J20941 4, J20941 5, J20941 67
MM46-62418-HT	Engine Mount Kit (Rear), w/Hardware, HT	Kit - (2) MM46-62417-HT
MM46-62451-HT	Engine Mount, Lower (Front), HT	BCD28945 1
MM46-62613-HT	Engine Mount Kit (Front), HT	J21246 13
MM46-62650-HT	Engine Mount, HT	CBA24 650 50A
MM46-62651-HT	Engine Mount, Upper (Front), HT	BCD27651 1, BCD27651 2
MM46-62660-HT	Engine Mount, Upper (Front), HT	J21246 60
MM46-62721-HT	Engine Mount, Lower (Front), HT	J21247 21
MM46-62948-HT	Engine Mount, Lower, HT	A17-13975-000
MS46-66791-HT	Engine Mount, HT	LOR J19791 1

EM46-69100-HT

Exhaust Mount, HT

- ID:** .397"
OD: Large 1.25"
 Small .95"
LG: 1.44"

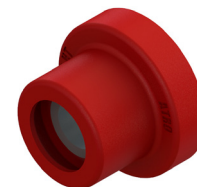


Freightliner: CBA12 100

EM46-69212-HT

Exhaust Mount, HT

- ID:** .5"
OD: Large 1.75"
 Small 1.25"
LG: 1.25"

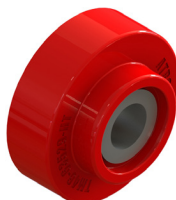


Freightliner: CB1121 2

TM46-63529-HT

Transmission Mount, Auxiliary, HT

- ID:** .938"
OD: Large 3.5"
 Small 2.22"
H: 1.625"



Freightliner: CBC 35 2 9

TM46-63664-HT

Transmission Mount, Auxiliary, HT

- ID:** .532"
OD: Large 1.938"
 Small 1.33"
H: .94"



Freightliner: J6256 64

ATRO Part #	Part Description	Cross Reference
MS46-69123	Insulator, Sandwich Mount*	J11729 123
MS46-69300	Radiator Isolator*	CBA20300
RM46-63273	Radiator Mount*	CB2202 73
RM46-63471	Radiator Isolator*	BCD 28721-1, BCD 28847-1, BCD 28721 1

* Not available in High Temp Polyurethane Formula

STEER KING™

The highest-quality king pin repair kits for heavy-duty trucks.

Our kits include precision machined parts for a true fit and long-lasting performance.



No-Ream Steel Spiral Kits

- Easy install.
- Maximum wear resistance.
- Three-year warranty.



No-Ream Bronze Kits

- More grease.
- Longer life.
- Two-year warranty.

Bronze Bushing and Seal Driver Tool



Scan the QR Code to learn the benefits of using Steer King. Premium No-Ream King Pin Repair Kits.

Steer King stands apart with the highest quality king pin repair kits on the market. We make our parts better with close tolerance machining, inspection of critical dimensions, and a proprietary manufacturing process. We make installation faster and easier with our kit box and tray, pre-packed bearings, bi-directional lip seals, grease grooves on all king pins, and spare parts when you need 'em.

Steer King. Better engineering saves time and cost with every installation.

ATRO Part #	Kit Type	Pin Type	King Pin Dimensions	Spindle Bore Dimensions	Axle Bore Dimensions	Bushing & Seal Driver	Cross Reference
SKB01999	Bronze	B	1.771 x 9.23	2.045/2.047	1.772/1.774	SKPT120A	6073300019K, 6073300619
SKS01999	Steel Spiral	B	1.771 x 9.23	2.045/2.047	1.772/1.774	SKPT120A	6073300019K, 6073300619
SKB12001	Bronze	B	1.771 x 9.23	2.045/2.047	1.772/1.774	SKPT120A	K120A, R200321, R201330, R202037
SKS12001	Steel Spiral	B	1.771 x 9.23	2.045/2.047	1.772/1.774	SKPT120A	K120A, R200321, R201330, R202037
SKB12101	Bronze	B	1.771 x 9.23	2.045/2.047	1.772/1.774	SKPT120A	K121A
SKS12101	Steel Spiral	B	1.771 x 9.23	2.045/2.047	1.772/1.774	SKPT120A	K121A
SKB14705	Bronze	C	1.872 x 9.05	2.057/2.058	1.873/1.875	SKPT147E	K147E, 50.147.05, 70.147.05
SKS14705	Steel Spiral	C	1.872 x 9.05	2.057/2.058	1.873/1.875	SKPT147E	K147E, 50.147.05, 70.147.05
SKB96112	Bronze	B	1.794 x 10.40	1.919/1.921	1.795/1.797	SKPT122E	K961L, 50.961.12, 70.961.12
SKS96112	Steel Spiral	B	1.794 x 10.40	1.919/1.921	1.795/1.797	SKPT122E	K961L, 50.961.12, 70.961.12
SKB98118	Bronze	B	1.794 x 8.87	1.920/1.921	1.795/1.797	SKPT122E	K981R, 50.981.18, 70.981.18
SKS98118	Steel Spiral	B	1.794 x 8.87	1.920/1.921	1.795/1.797	SKPT122E	K981R, 50.981.18, 70.981.18

PB46-26268

Pivot Bushing, Anti-Walk

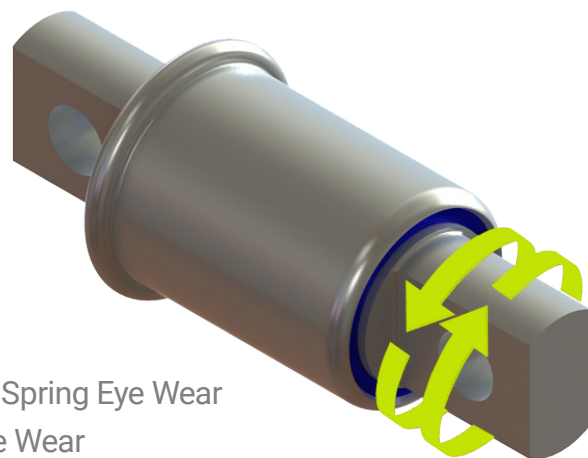
OD: 2 1/2"

BOLT: 3/4", 5 21/32" c-c

Qty Per Vehicle: 4

Freightliner: 16-13962-000, 16-16412-000,
16-18035-000, 681-325-01-50, 681-325-02-50

- Fixed pin rubber bushing rotates in the leaf spring eye > Causes Spring Eye Wear
- ATRO Pin rotates Higher tensile strength > Eliminates Spring Eye Wear
- Inbound flange prevents bushing walkout



LP46-19773

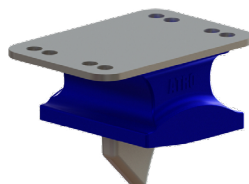
Spring Pad

H: 3 1/8"

WD: 5 1/4"

LG: 7 9/16"

Freightliner: A1615303000,
A1615773000



LP46-24581

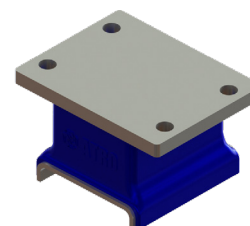
Spring Insulator Pad, Upper

H: 3 1/8"

WD: 5 1/8"

LG: 7 9/16"

Freightliner: 11-19581-000



ATRO Part #	Part Description	Cross Reference
LP46-24807	Spring Insulator Pad, Lower	11-20807-000
LP46-24808	Spring Insulator Pad, Upper	11-20808-000

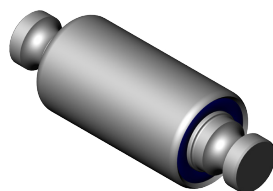
SP46-11023

Spring Eye Bushing

OD: 2 1/4"

LG: 6.70"

Freightliner: 16-14603-000,
16-17770-000, 16-18023-000,
16-17194-000, 16-21919-000



SP46-52800

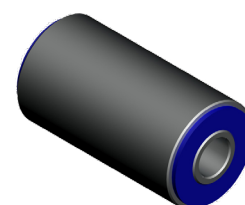
Spring Eye Bushing

ID: 20mm

OD: 2 1/4"

LG: 4"

Freightliner: A6803220150
680-322-01-50, 16-17769-000



ATRO Part #	Part Description	Cross Reference
MS46-19215	Bump Stop, Front Axle	16-15215-000
SK46-10000	Spring Eye Shackle Kit	16-11890-001, 16-12373-000, 16-13470-000, 16-12302-000, 16-12399-000, A16-12301-000, 16-11890-000
SK46-10800	Spring Eye Shackle Kit	680-322-00-20, 680-322-03-01, 680-322-01-05
SK46-10900	Spring Eye Shackle Kit	680-322-01-05
SK46-11200	Spring Eye Shackle Kit	16-12373-000, A16-01005-002, 16-12399-000, 16-13470-000
SP46-11373	Spring Eye Bushing	16-12373-000, 16-12399-000, 16-13470-000
SP46-11473	Spring Eye Bushing	16-16473-000
SP46-11508	Spring Eye Bushing	16-20508-000, 16-22182-000

Torque Rods

TR46-41002

Torque Rod, Small Eye

LG: 24 5/16" c-c

Bushings: TS38000/TS38000

Freightliner: 16-18972-000, 681-326-72-16



TR46-41000

Torque Rod

LG: 24 3/16" c-c

Bushings:
TS38000/TS38000

Freightliner: 16-15632-000,
16-16749-002



TR46-41175

Torque Rod

LG: 23 1/2" c-c

Bushings:
TS38000/TS38000

Freightliner: 681-326-27-16



TR46-41316

Torque Rod, Small Eye

LG: 22 7/8" c-c

Bushings:
TS00-22500/TS00-22500

Freightliner: 16-16749-000,
681-326-6316



TR46-41716

Torque Rod, Small Eye

LG: 23 15/16" c-c

Bushings:
TS00-22500/TS00-22500

Freightliner: 16-15632-01,
16-18972-001, 16-16749-001, 681 326 67 16



ATRO Part #	Rod type	Length	Bushings	Cross Reference
TR46-41003	Small Eye Torque Rod	20 1/4" c-c	TS00-22500/ TS00-22500	16-16749-003
TR46-41016	Large Eye Torque Rod	24 7/16" c-c	TS38000/TT38000	680-326-00-16
TR46-41053	Small Eye Torque Rod	16 3/8" c-c	TS00-22500/TS00-22500	16-03053-000, 16-19568-000, 16-13053-000, 16-19505-000
TR46-41351	Small Eye Torque Rod	16 1/8" c-c	TS00-22500/TS00-22500	16-16141-000, 16-19351-000
TR46-41972	Small Eye Torque Rod	23 13/16" c-c	TS00-22500/TS00-22500	16-15632-001
TR46-43016	Small Eye Torque Rod	16 5/8" c-c	TS00-22500/TS00-22500	681-626-6016, 16-19505-000
TR46-46002	Twist Torque Rod	24 7/16" c-c	TS38000/TT38000	16-14149-002
TR46-46003	Twist Torque Rod	24 7/16" c-c	TS38000/TT38000	16-14149-003
TR46-46016	Small Eye Torque Rod	17" c-c	TS00-22500/TH00-22500	681-326-00-16
TR46-49002	Large Eye Torque Rod	23 1/4" c-c	TS46-22300/TS46-22300	16-15002-001, 16-15002-000
TR46-49004	Large Eye Torque Rod	26 3/8" c-c	TS46-22300/TS46-22300	16-15004-001, 16-15004-000
TR46-49998	Large Eye Torque Rod	24 7/16" c-c	TS46-22300/TS46-22300	16-14998-001, 16-14998-000
TR94-41458	Large Eye Torque Rod	22 3/8" c-c	TS38000/TS38000	35801-3458
TR94-41514	Large Eye Torque Rod	22 1/2" c-c	TH99-22101/TH99-22101	35801-3514, IPC947-271

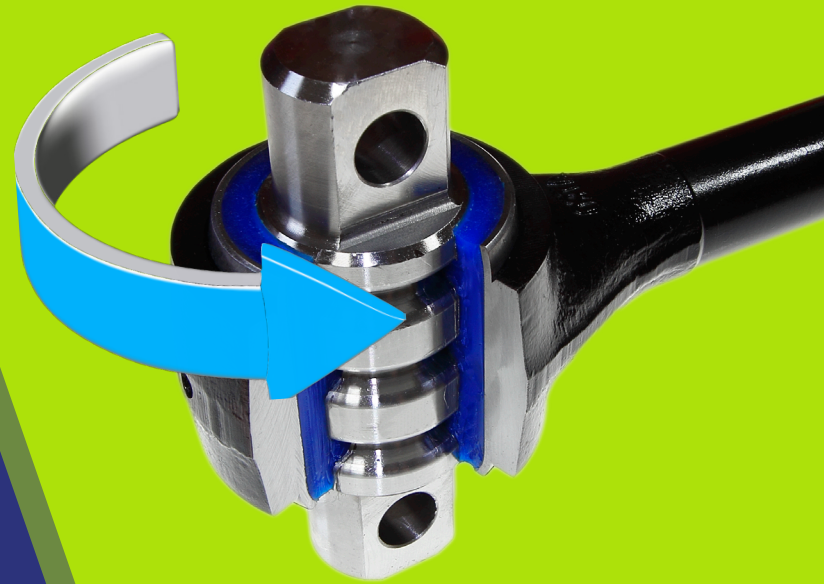
ATRO's Rotating Pin Torque Rod Bushing

Better engineering. Faster, simpler installation.

ATRO's innovative torque rods have rotating pins with custom engineered polyurethane bushings. They install easier and last longer than competitor parts. No dry out, no corrosion, no wind up.

ATRO parts outperform rubber parts by 3-5 times.

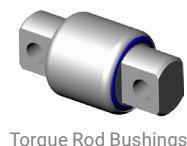
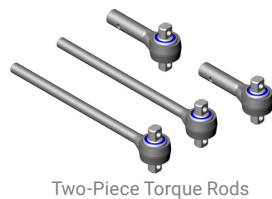
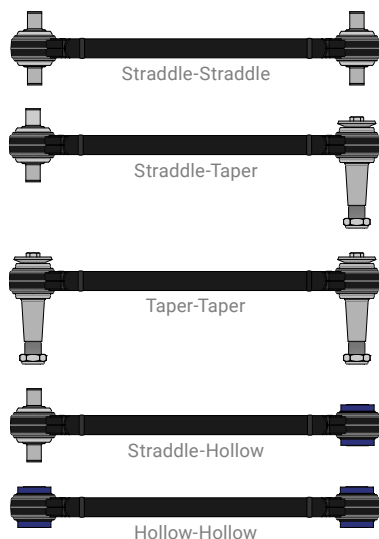
- ATRO polyurethanes are 3-5 times stronger than rubber.
- Resistant to oils, grease, road salt, and other chemicals.
- Specific compounds optimize the performance of each part.



The ATRO torque rod pin can rotate a full 360° and adjust to any clocking angle for fast, easy installation.



Find the rod you need fast with ATRO's Torque Rod Finder.



Save time and cost with ATRO Torque Rods.

- Less inventory: one rod fits any clocking angle.
- Eliminates bushing wind up (typical with rubber).
- Reduces stress on the ENTIRE suspension.
- Longer life reduces customer's operating costs.

Available configurations:

- Large-Eye Torque Rods
- Small-eye Torque Rods
- Two-Piece Torque Rods
- V-Rods
- Custom Rods



Suspension Schematics

Freightliner FAS II

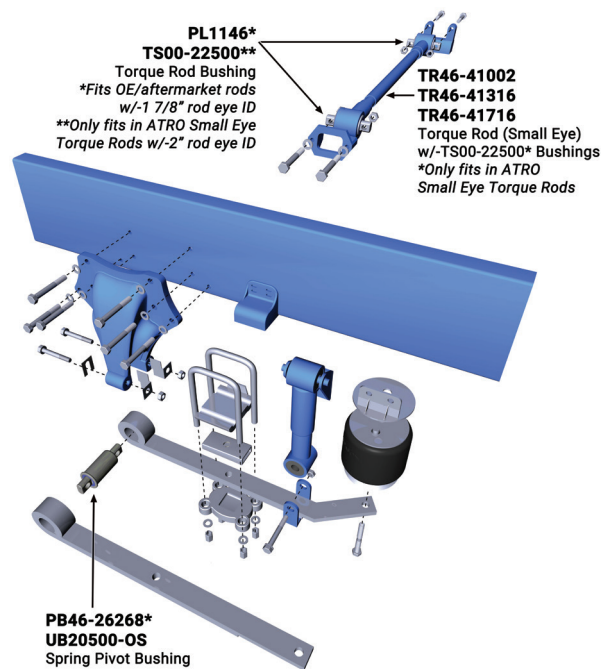
- Popular in over-the-road applications
- Designed to cushion load and reduce sway in turns
- Features an underslung parabolic leaf spring trailing arm

ATRO Spring Pin Solution (PB46-26268; UB20500-OS)

- Rotating pin design with flanged outer sleeve limits travel
- Revolving inner pin eliminates bushing wind-up
- Oversized version available (UB20500-OS)

ATRO Torque Rods

- ATRO offers complete replacement rods for the three different length options
 - TR46-41716 (23 15/16")
 - TR46-41316 (22 7/8")
 - TR46-41002 (24 5/16")



Freightliner TufTrac

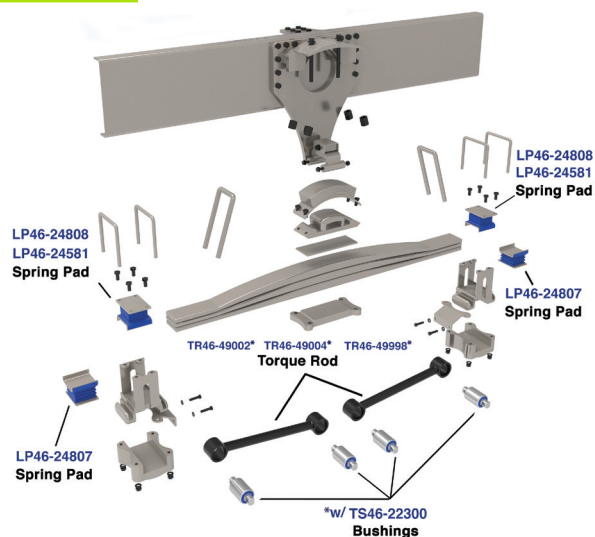
- Popular in vocational and high-center-of-gravity applications
- Designed to smooth out ride, reduce noise and vibration, and provide ground clearance
- Features parabolic springs with elastomeric load cushions.

ATRO Spring End Pad Solutions

- Proprietary polyurethane resists compression set while absorbing shock and dampening vibration.
 - LP46-24808 – upper pad, 40k suspension
 - LP46-24581 – upper pad, 46k suspension
 - LP46-24807 – lower pad, used on both 40k & 46k suspension

Atro Torque Rods

- Atro offers complete replacement rods for the three different length options
 - TR46-49002 – used on 40k suspension with 54" axle spacing
 - TR46-49004 – used on 46-52k suspension with 60" axle spacing
 - TR46-49998 – used on 46-52k suspension with 56" axle spacing



ATRO
Field Manual
Suspensions & Torque Rods

Performance that drives your success.

Featuring sections on:

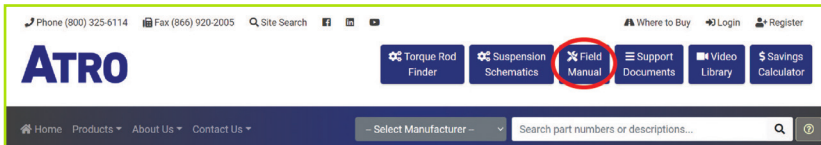
- Suspension Basics
- Air Suspension Inspection/Maintenance
- Leaf Spring Inspection
- Most Common & Preventable Failures
- Truck Rear Suspensions
- Trailer Suspensions
- Torque Rods

Chalmers
Freightliner
Hendrickson
Hatchens
International
Kenworth
Mack
Meritor
Neway
Peterbilt
Reyco
Volvo

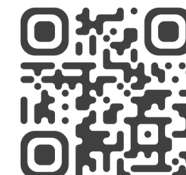
A valuable preventive maintenance guide from ATRO. To view the digital Field Manual follow the instructions below or scan the QR code to download a copy to your device.

Go to www.atrobushing.com

Click on Field Manual in the upper right hand corner



Scan QR Code to download:
ATRO Field Manual

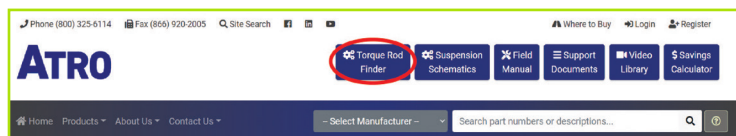


Torque Rod Finder

ATRO has compiled a master database to simplify and expedite the process of finding replacement rods. Shorten the time at the counter and confirm the right part for your customer.

Go to www.atrobushing.com

Click on the Torque Rod Finder in the upper right corner



1 Visually Identify the Rod
Select the types of bushings Straddle, Taper or Hollow

1 SELECT STYLE 2 SELECT LENGTH 3 FIND TORQUE ROD

STRADDLE-STRADDLE Select

STRADDLE-TAPER Select

TAPER-TAPER Select

STRADDLE-HOLLOW Select

HOLLOW-HOLLOW Select

TECH TIP:

Sometimes the field measurement of a rod can be off by a little bit. In the Torque Rod Finder, check the measurements just a little longer or shorter than what you have and often you will find a very popular rod that is exactly what you need! Most suspensions are predictable and use common torque rods!

2 Measure the Rod
Measure from center of bushing to center of bushing or outside of one eye to inside of the other eye.

1 SELECT STYLE 2 SELECT LENGTH 3 FIND TORQUE ROD

Configuration: Straddle - Straddle

Filter the C-C length

14 3/16" c-c	14.31" c-c	14 3/8" c-c	14.41" c-c	14 3/4" c-c	15 3/16" c-c	15 3/8" c-c
15 3/4" c-c	15 13/16" c-c	16 1/8" c-c	16 1/2" c-c	16 9/16" c-c	16 5/8" c-c	16 15/16" c-c
17 1/8" c-c	17 5/16" c-c	17 3/8" c-c	17 15/16" c-c	18 1/8" c-c	18 5/16" c-c	18.7" c-c
19 1/16" c-c	19 1/8" c-c	19 1/2" c-c	19 11/16" c-c	19 3/4" c-c	19 7/8" c-c	20" c-c
20 1/16" c-c	20 1/4" c-c	20.31" c-c	20 1/2" c-c	20 11/16" c-c	20 7/8" c-c	21" c-c

3 Results found with bushing and bolt hole detail

1 SELECT STYLE 2 SELECT LENGTH 3 FIND TORQUE ROD

Configuration: Straddle - Straddle
20 1/16" c-c Length

Notes:

C-C

A B

TR50-42510

ATRO



- ATRO polyurethanes are 3-5 times stronger than rubber.
- Resistant to oils, grease, road salt, and other chemicals.
- Specific compounds optimize the performance of each part.



Contact Us

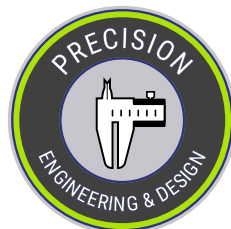
Phone: (800) 325-6114

Fax: (866) 920-2005

Email: customerservice@atrobushing.com

Website: www.atrobushing.com

ATRO, LLC
6 Bolte Lane
St. Clair, MO 63077 USA



ATRO Parts. Performance that drives your success.

ATRO, LLC | 6 Bolte Lane | St. Clair, MO 63077 USA | Phone (800) 325-6114

www.atrobushing.com

© 2024 ATRO, LLC