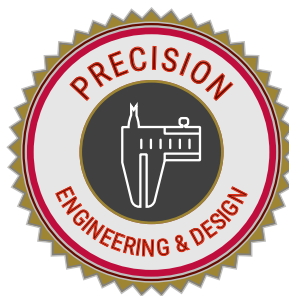
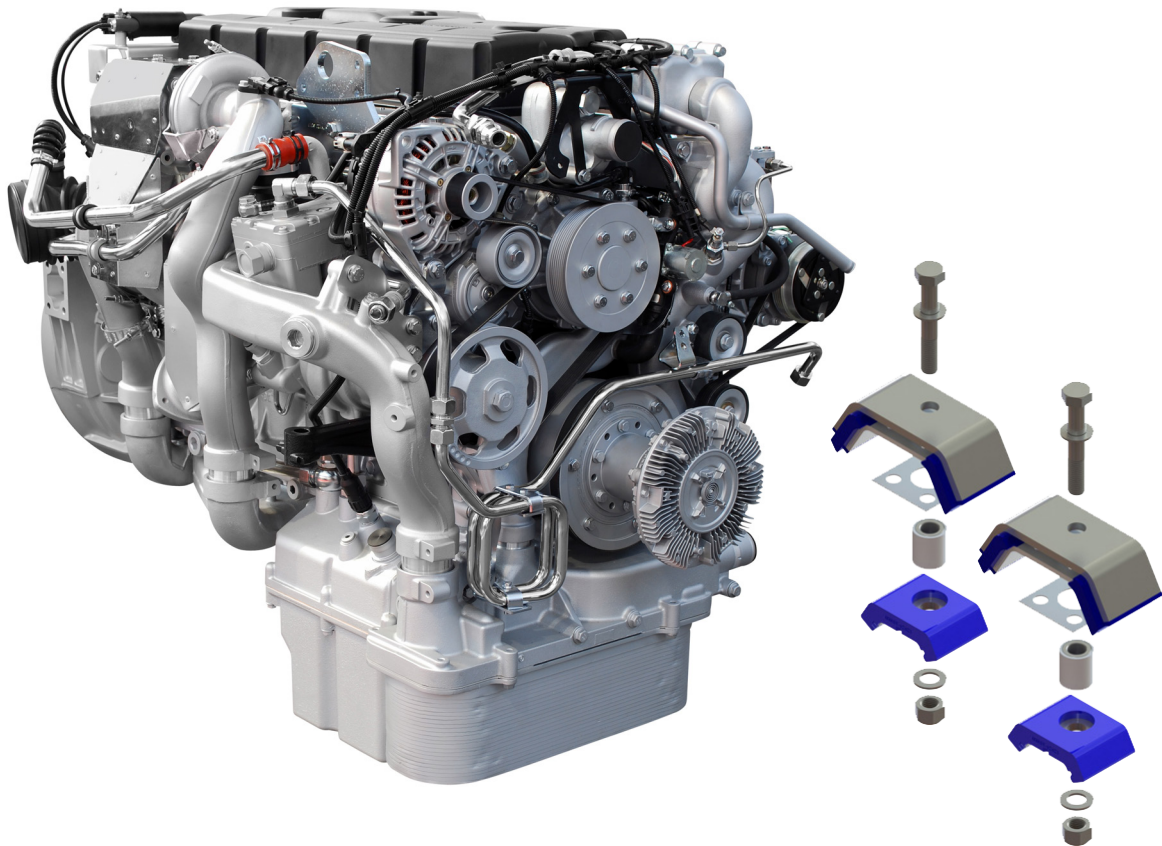


ENGINE MOUNT PARTS GUIDE



**WITH ATRO BEHIND YOU,
DRIVE FORWARD**

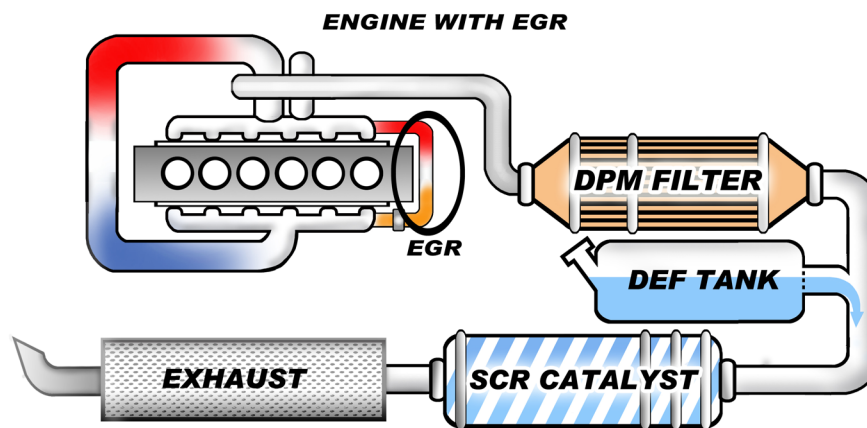
ATRO Engine Mounts

WHY SELL COMPLETE KITS

- In most cases, the hardware should be replaced because of normal thread stretch and damage when torqued on initial installation or when removed
- Makes the job faster and easier on the technician
- Gives the fleet a complete repair that they can have confidence in

WHY SELL HIGH TEMPERATURE MOUNTS

- Trucks equipped with an engine recirculation systems, SCR or ERG, overburden the cooling system by 15% - 30%
- Underhood compartment temperatures rise dramatically, reducing motor mount life
- This extreme heat causes engine mount failure
- Failed engine mounts can damage drivetrains
- ATRO's high temperature mounts, tested to 300 degrees, solve the problem
- ATRO has the ONLY solution for high temperature under hood conditions



Under hood temperatures rise as the cooling system is over-burdened with the additional task of cooling the recirculating exhaust gas.

Popular ATR0 Engine Mounts

MACK/VOLVO

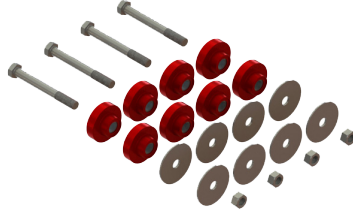
KT62-62389-HT

Ref. 204SX389



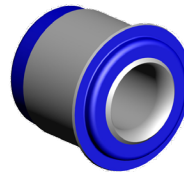
KT62-62216-HT

Ref. 204SX216



MM96-62657

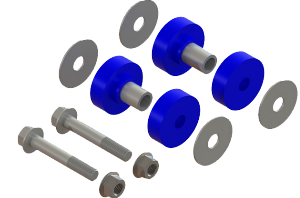
Ref. 3081657



MM62-622M2

Ref. 20QL312M2*

(* only 1 mount without hardware)



FREIGHTLINER

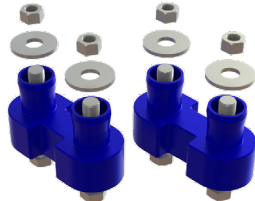
MM46-62000

Ref. BCD 27330 2 Upper
Ref. BCD 28805 1 Lower



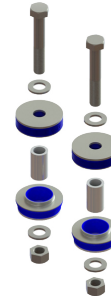
MM46-62418

Ref. LOR J20941 7
Ref. LOR J20941-3-6



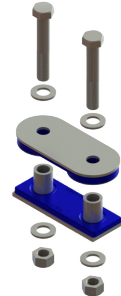
MM46-62006

Ref. LOR SSB33 1001 7 Upper
Ref. LOR SSB33 1001 8 Lower



MM46-62005

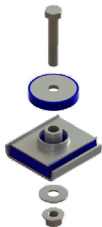
Ref. BCD 27651 1 Upper
Ref. BCD 28945-1 Lower



NAVISTAR

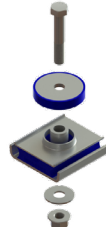
MM55-62002

Ref. 1664726C2 Upper
Ref. 1664724C1 Lower



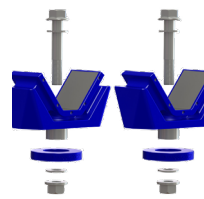
MM55-62003

Ref. 1664726C2 Upper/snubber
Ref. 1664723C2 Lower



MM55-62005

Ref. 1664729C7 Upper
Ref. 1664730C7 Lower



PL1055-HT

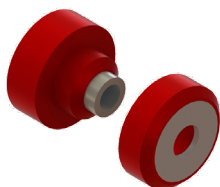
Ref. 470031C2



PACCAR

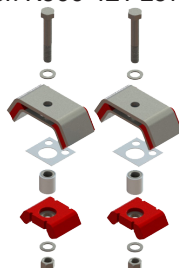
MM75-62372-HT

Ref. CB2203-72



KT59-62004-HT

Ref. K066-377 Upper
Ref. K066-421 Lower



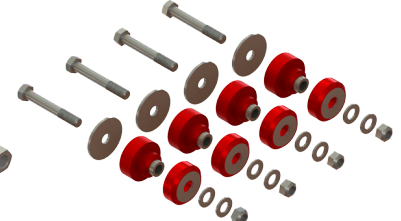
KT59-62003-HT

Ref. K066-406 Upper
Ref. K066-404 Lower

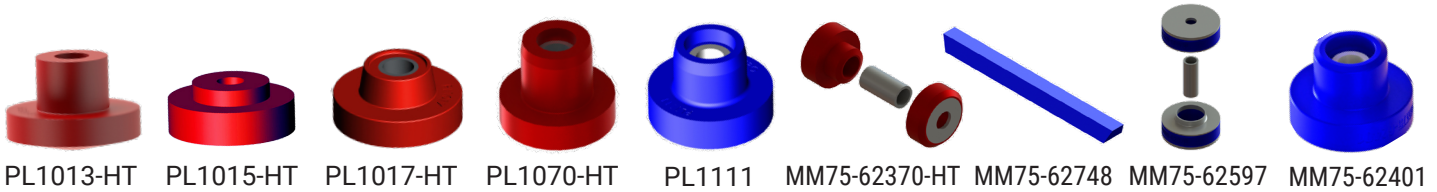


MM75-62001-HT

Ref. CB2203-72 Mount Only



Additional Popular ATRO Engine Mounts



ATRO Part Number	Freightliner	Kenworth	Mack	PACCAR	Peterbilt	Western Star	Make
PL1013-HT	J6198-2	M700 K066-229		05-16919-2	05-08969 05-10103		Freighliner PACCAR
PL1015-HT	J7165-1	M601 07-03286RUB K066-228			07-03286	04-9009996	Freighliner PACCAR Western Star
PL1017-HT			25167342				
PL1070-HT		M501 M501-70NR			05-08968		PACCAR
PL1111					05-16919 05-16919-2	12005-3403	PACCAR Western Star
MM75-62370-HT					CB2203-70		Peterbilt
MM75-62748					05-00748		Peterbilt
MM75-62597					05-17597		Peterbilt
MM75-62401	M700-50NR CB1125-2				05-16401		Freightliner Peterbilt



ATRO

ENGINEERED SYSTEMS

6 Bolte Lane • St. Clair, Missouri 63077

(800) 325-6114

www.atrobushing.com



MC002-02319_Motor-Mounts

ATRO Engineered Systems, Inc. is not liable for any errors herein. All manufacturers' names and part numbers are used without permission; no endorsement, affiliation, or recommendation is implied. They are included for reference purposes only.

©2019 ATRO ENGINEERED SYSTEMS, INC.