

# ATRO

## Parts Guide

# Freightliner

Cab & Underhood  
Carrier Bearings  
High Temp Mounts  
Steer King  
Suspension  
Torque Rods



**ATRO Parts. Performance that drives your success.**

ATRO, LLC | 6 Bolte Lane | St. Clair, MO 63077 USA | Phone (800) 325-6114

[www.atrobushing.com](http://www.atrobushing.com)

© 2024 ATRO, LLC

# Cab and Underhood

## CM46-61001

### Cab Mount Kit

#### Contains:

- (2) CM46-61890
- (2) CM46-61891
- (2) 3/4" x 5" Grade 8 Hex Head Bolts
- (2) 3/4" Flat Washers
- (2) 3/4" Locknuts



**Freightliner:** 681-891-00-01, 18-43636-000, 681-890-00-01

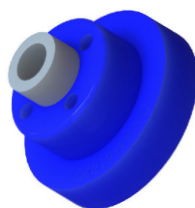
## CM46-61890

### Cab Mount (Upper)

**OD:** 3.3"

**H:** 2.6"

**Freightliner:** 681-890-00-01



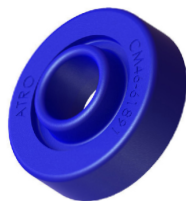
## CM46-61891

### Cab Mount, Lower

**ID:** 1.25"

**OD:** 3.8"

**Freightliner:** 681-891-00-01, 18-43637-000

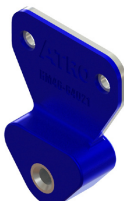


## HM46-64021

### Grill Mount

**MISC:** 1.1/4" Thread

**Freightliner:** 17-13021-000



## HL46-64480

### Hood Latch Kit

#### Contains:

- (1) HL46-64434
- (1) HL46-64435

**Freightliner:** 17-12348-000, 17-12434-000 (catch), 17-12438-00 (no catch)



## HL46-64434

### Hood Latch Catch

**L:** 5"

**Freightliner:** 17-12434-000



## HL46-64435

### Hood Latch

**L:** 11 1/4"

**Freightliner:** 17-12435-000



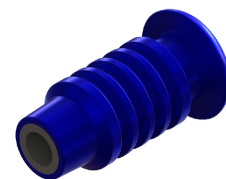
## HM46-64975

### Hood Hinge Bushing

**ID:** .5"

**L:** 3"

**Freightliner:** A17-13975-000



ATRO Part #	Part Description	Cross Reference
CM46-61384	Cab Mount Assembly	A1840099000, 18-45384-000
CM46-61769	Cab Mount Bushing	18-42727-000, 18-34678-000, 18-41005-000
CM46-61891	Cab Mount, Lower	18-43637-000, 681-891-00-01
CM46-61922	Cab Mount Bushing & Bracket Assembly	18-59922-000
CM94-61875	Cab Mount (Front)	LOR CB2204 146
HL46-64530	Hood Latch Kit, Left	A17-15553-000
HL46-64531	Hood Latch Kit, Right	A17-15553-001
HL46-64650	Hood Latch Kit, Left	17-12435-000, 17-12434-000
HL46-64651	Hood Latch Kit, Right	17-12435-001, 17-12434-001H
HM46-64177	Hood Bumper	J11729 177
HM46-64877	Hood Bumper	17-13877-000
HM94-64438	Hood Mount	67009-3438

## CR00-67661

### Carrier Bearing Assembly, Self-Aligning

**Bearing Angular Allowance:** +/-10 degrees  
**Series 1810**

#### Assembly:

**Height:** 7-5/8"

**Width:** 3-3/4"

**Length:** 10"

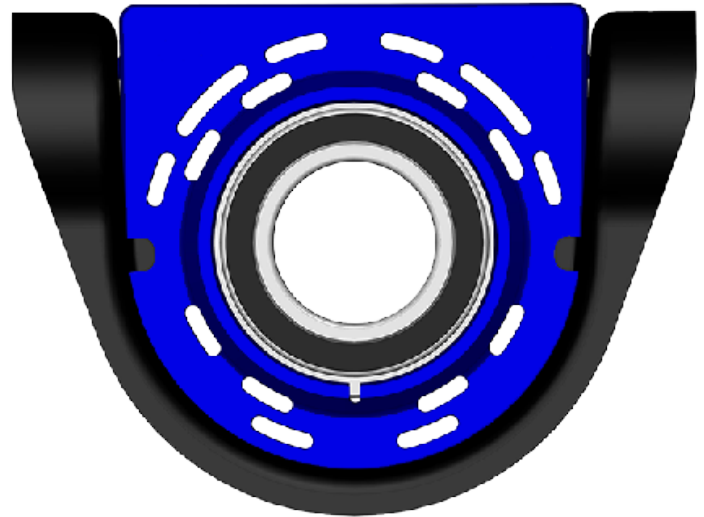
#### Bearing:

**Bearing ID:** 60mm

**Center Height:** 3-3/8"

**Bolt Holes:** 8 5/8" c-c

**Bolt Size:** 1/2"



**Dana-Spicer:** 10094142

**Meritor:** CB210661-1XSA

## Features & Benefits

### Polyurethane

- Chemically Resistant
- Vibration Absorbing

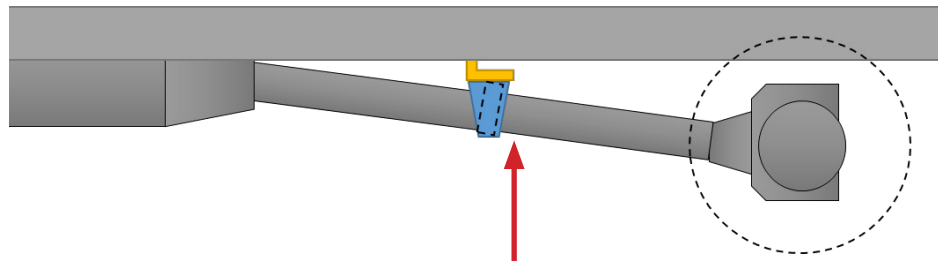
### Patented Pivoting Bearing

- ± 10° of Articulation
- Sealed
  - Prevents Contamination
  - Retains Lubricant

### Heavy Duty Steel Housing

- 7 Gauge Steel

## Importance of the Self-Aligning Feature



With the ATRO self-aligning carrier bearing assembly, there is no need to shim because the center is allowed to pivot + or - 10 degrees.\*

This saves money and time on the installation ... less parts plus no need to be as precise due to the range of articulation provided by the new carrier bearing.

\* Proper driveline angle must be maintained.

## CR00-67825

### Carrier Bearing Assembly

**Series 1810**

#### Assembly:

**Height:** 7 1/4"

**Width:** 3"

**Length:** 10"

#### Bearing:

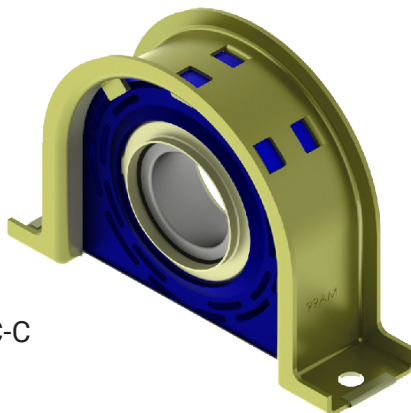
**Bearing ID:** 60mm

**Center Height:** 3 1/4"

**Bolt Holes:** 8 5/8" C-C

**Bolt Size:** 1/2"

**Dana-Spicer:** 210661-1X



## CR00-67121

### Carrier Bearing Assembly

**Series 1710**

#### Assembly:

**Height:** 9 1/4"

**Width:** 2 1/4"

**Length:** 10"

#### Bearing:

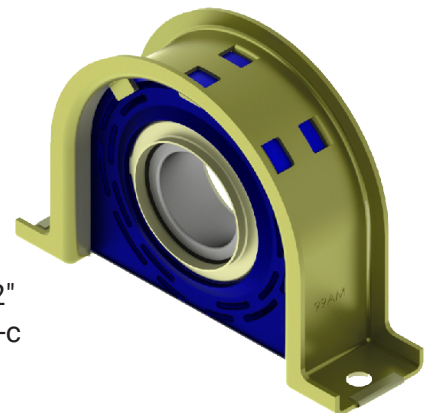
**Bearing ID:** 50mm

**Center Height:** 2 25/32"

**Bolt Holes:** 7 5/8" c-c

**Bolt Size:** 1/2"

**Dana-Spicer:** 210121-1X



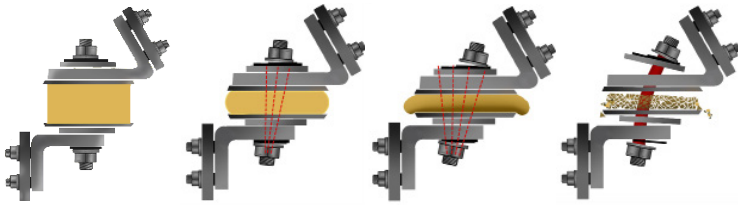
# High Temp Mounts

## Why use ATRO's High Temp Engine Mounts?

EGR/SCR Systems increase underhood temperatures.

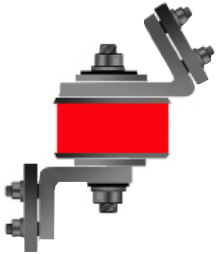
## ATRO's High Temp Polyurethane is the ONLY solution in the Industry for Underhood conditions.

Watch what happens when a standard engine mount is exposed to excessive heat.



### ATRO's High Temp Polyurethane benefits:

- Tested at 300 degrees continuous temperature
- Higher tensile strength
- Improved vibration isolation
- Resistant to chemical attack



### ATRO's High Temperature Engine Mount Line for heavy duty vehicles

ATRO developed polymers that withstand extreme heat in the 300°F range and have replaced the rubber or polyurethane materials that can fail at 200°F. ATRO's material maintains its physical properties throughout the load, heat and stress.

## Many ATRO's Parts are available in Kits!

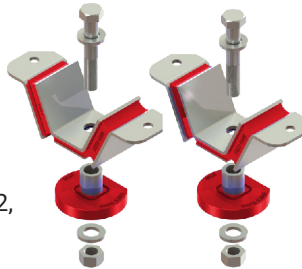
### MM46-62000-HT

#### Engine Mount Kit (Rear), HT

**Contains:**

- (2) MM46-62051-HT
- (2) MM46-62301-HT
- (2) Bolts - 3/4"-16 x 4.5" Grade 8
- (4) Washers
- (2) Locknuts

**Freightliner:** BCD 27330 1, BCD 27330 2, BCD 28805 1



### MM46-62002-HT

#### Engine Mount Kit, Front, HT

**Contains:**

- (1) MM46-62451-HT
- (1) MM46-62651-HT

**Freightliner:** BCD 26704-1, BCD 27651 1, BCD 27651 2, BCD 27651 3, BCD 289451



### MM46-62004-HT

#### Engine Mount Kit w/Hardware (Front), HT

**Contains:**

- (1) MM46-62660-HT
- (1) MM46-62721-HT
- (2) 3/4" Bolts
- (2) 3/4" Locknuts
- (4) 3/4" Flat Washers

**Freightliner:** J21246-60, J21247-21, LOR J21246 60, LOR J21247 21



### MM46-62005-HT

#### Engine Mount Kit w/Hardware (Front), HT

**Contains:**

- (1) MM46-62451-HT
- (1) MM46-62651-HT
- (2) BOLT, 3/4"-16 X 4 1/2", GR 8
- (2) 3/4" Locknuts
- (4) 3/4" Flat Washers

**Freightliner:** BCD 26704-1, BCD 276511, BCD 27651 2, BCD 27651 3, BCD 28945-1





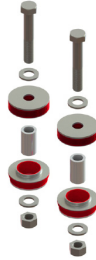
## MM46-62006-HT

### Engine Mount Kit w/Hardware (Front), HT

#### Contains:

- (2) MM46-62003-HT
- (2) Spacer Sleeve
- (2) Bolts
- (2) Locknuts
- (4) Flat Washers

**Freightliner:** 01-15047-000, LOR SSB33 1001 7, LOR SSB33 1001 8, SSB3310017, SSB3310018, 13371-45



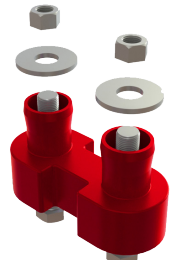
## MM46-62417-HT

### Engine Mount Kit (Rear), w/Hardware, HT

#### Contains:

- (1) MM46-62416-HT
- (2) 5/8" Bolts
- (2) 5/8" Locknuts
- (2) Washers

**Freightliner:** J209413, J20941 36, J209414, J209415120, J2094167, LOR J20941 7, LOR J2094416



ATRO Part #	Part Description	Cross Reference
MM46-62051-HT	Engine Mount, Lower (Rear), HT	BCD28805 1
MM46-62120-HT	Motor Mount, (Upper) HT	J20120 14
MM46-62222-HT	Engine Mount, HT	CB1122 2
MM46-62301-HT	Engine Mount, Upper (Rear), HT	BCD27330 1
MM46-62416-HT	Engine Mount (Rear), HT	J20941 13, J20941 36, J20941 4, J20941 5, J20941 67
MM46-62418-HT	Engine Mount Kit (Rear), w/Hardware, HT	Kit - (2) MM46-62417-HT
MM46-62451-HT	Engine Mount, Lower (Front), HT	BCD28945 1
MM46-62613-HT	Engine Mount Kit (Front), HT	J21246 13
MM46-62650-HT	Engine Mount, HT	CBA24 650 50A
MM46-62651-HT	Engine Mount, Upper (Front), HT	BCD27651 1, BCD27651 2
MM46-62660-HT	Engine Mount, Upper (Front), HT	J21246 60
MM46-62721-HT	Engine Mount, Lower (Front), HT	J21247 21
MM46-62948-HT	Engine Mount, Lower, HT	A17-13975-000
MS46-66791-HT	Engine Mount, HT	LOR J19791 1

## EM46-69100-HT

### Exhaust Mount, HT

ID: .397"

OD: Large 1.25"  
Small .95"

LG: 1.44"



**Freightliner:** CBA12 100

## EM46-69212-HT

### Exhaust Mount, HT

ID: .5"

OD: Large 1.75"  
Small 1.25"

LG: 1.25"



**Freightliner:** CB1121 2

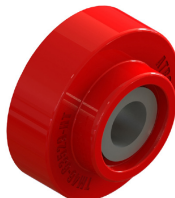
## TM46-63529-HT

### Transmission Mount, Auxiliary, HT

ID: .938"

OD: Large 3.5"  
Small 2.22"

H: 1.625"



**Freightliner:** CBC 35 2 9

## TM46-63664-HT

### Transmission Mount, Auxiliary, HT

ID: .532"

OD: Large 1.938"  
Small 1.33"

H: .94"



**Freightliner:** J6256 64

ATRO Part #	Part Description	Cross Reference
MS46-69123	Insulator, Sandwich Mount*	J11729 123
MS46-69300	Radiator Isolator*	CBA20300
RM46-63273	Radiator Mount*	CB2202 73
RM46-63471	Radiator Isolator*	BCD 28721-1, BCD 28847-1, BCD 28721 1

\* Not available in High Temp Polyurethane Formula

# STEER KING™

**The highest-quality king pin repair kits for heavy-duty trucks.**

Our kits include precision machined parts for a true fit and long-lasting performance.



## No-Ream Steel Spiral Kits

- Easy install.
- Maximum wear resistance.
- Three-year warranty.



## No-Ream Bronze Kits

- More grease.
- Longer life.
- Two-year warranty.



**Scan the QR Code to learn the benefits of using Steer King. Premium No-Ream King Pin Repair Kits.**

Steer King stands apart with the highest quality king pin repair kits on the market. We make our parts better with close tolerance machining, inspection of critical dimensions, and a proprietary manufacturing process. We make installation faster and easier with our kit box and tray, pre-packed bearings, bi-directional lip seals, grease grooves on all king pins, and spare parts when you need 'em.

**Steer King. Better engineering saves time and cost with every installation.**

ATRO Part #	Kit Type	Pin Type	King Pin Dimensions	Spindle Bore Dimensions	Axle Bore Dimensions	Bushing & Seal Driver	Cross Reference
SKB01999	Bronze	B	1.771 x 9.23	2.045/2.047	1.772/1.774	SKPT120A	6073300019K, 6073300619
SKS01999	Steel Spiral	B	1.771 x 9.23	2.045/2.047	1.772/1.774	SKPT120A	6073300019K, 6073300619
SKB12001	Bronze	B	1.771 x 9.23	2.045/2.047	1.772/1.774	SKPT120A	K120A, R200321, R201330, R202037
SKS12001	Steel Spiral	B	1.771 x 9.23	2.045/2.047	1.772/1.774	SKPT120A	K120A, R200321, R201330, R202037
SKB12101	Bronze	B	1.771 x 9.23	2.045/2.047	1.772/1.774	SKPT120A	K121A
SKS12101	Steel Spiral	B	1.771 x 9.23	2.045/2.047	1.772/1.774	SKPT120A	K121A
SKB14705	Bronze	C	1.872 x 9.05	2.057/2.058	1.873/1.875	SKPT147E	K147E, 50.147.05, 70.147.05
SKS14705	Steel Spiral	C	1.872 x 9.05	2.057/2.058	1.873/1.875	SKPT147E	K147E, 50.147.05, 70.147.05
SKB96112	Bronze	B	1.794 x 10.40	1.919/1.921	1.795/1.797	SKPT122E	K961L, 50.961.12, 70.961.12
SKS96112	Steel Spiral	B	1.794 x 10.40	1.919/1.921	1.795/1.797	SKPT122E	K961L, 50.961.12, 70.961.12
SKB98118	Bronze	B	1.794 x 8.87	1.920/1.921	1.795/1.797	SKPT122E	K981R, 50.981.18, 70.981.18
SKS98118	Steel Spiral	B	1.794 x 8.87	1.920/1.921	1.795/1.797	SKPT122E	K981R, 50.981.18, 70.981.18

## PB46-26268

### Pivot Bushing, Anti-Walk

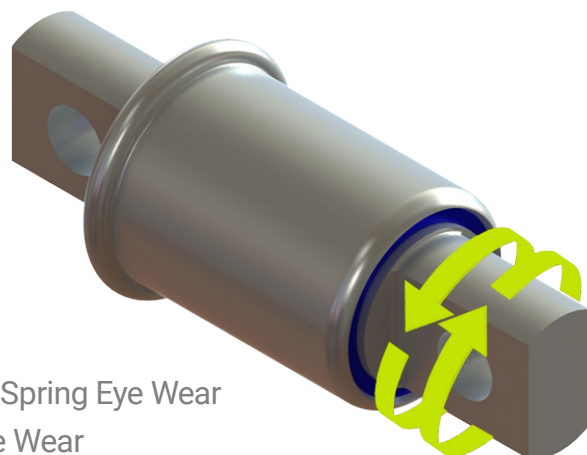
**OD:** 2 1/2"

**BOLT:** 3/4", 5 21/32" c-c

**Qty Per Vehicle:** 4

**Freightliner:** 16-13962-000, 16-16412-000,  
16-18035-000, 681-325-01-50, 681-325-02-50

- Fixed pin rubber bushing rotates in the leaf spring eye > Causes Spring Eye Wear
- ATRO Pin rotates Higher tensile strength > Eliminates Spring Eye Wear
- Inbound flange prevents bushing walkout



## LP46-19773

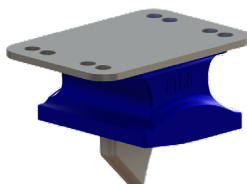
### Spring Pad

**H:** 3 1/8"

**WD:** 5 1/4"

**LG:** 7 9/16"

**Freightliner:** A1615303000,  
A1615773000



## LP46-24581

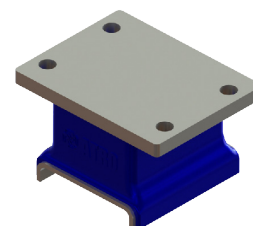
### Spring Insulator Pad, Upper

**H:** 3 1/8"

**WD:** 5 1/8"

**LG:** 7 9/16"

**Freightliner:** 11-19581-000



ATRO Part #	Part Description	Cross Reference
LP46-24807	Spring Insulator Pad, Lower	11-20807-000
LP46-24808	Spring Insulator Pad, Upper	11-20808-000

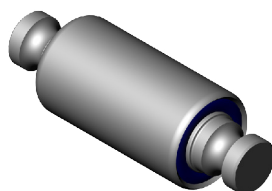
## SP46-11023

### Spring Eye Bushing

**OD:** 2 1/4"

**LG:** 6.70"

**Freightliner:** 16-14603-000,  
16-17770-000, 16-18023-000,  
16-17194-000, 16-21919-000



## SP46-52800

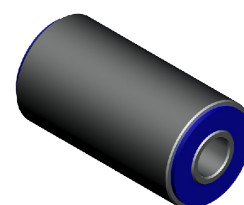
### Spring Eye Bushing

**ID:** 20mm

**OD:** 2 1/4"

**LG:** 4"

**Freightliner:** A6803220150  
680-322-01-50, 16-17769-000



ATRO Part #	Part Description	Cross Reference
MS46-19215	Bump Stop, Front Axle	16-15215-000
SK46-10000	Spring Eye Shackle Kit	16-11890-001, 16-12373-000, 16-13470-000, 16-12302-000, 16-12399-000, A16-12301-000, 16-11890-000
SK46-10800	Spring Eye Shackle Kit	680-322-00-20, 680-322-03-01, 680-322-01-05
SK46-10900	Spring Eye Shackle Kit	680-322-01-05
SK46-11200	Spring Eye Shackle Kit	16-12373-000, A16-01005-002, 16-12399-000, 16-13470-000
SP46-11373	Spring Eye Bushing	16-12373-000, 16-12399-000, 16-13470-000
SP46-11473	Spring Eye Bushing	16-16473-000
SP46-11508	Spring Eye Bushing	16-20508-000, 16-22182-000

# Torque Rods

## TR46-41002

### Torque Rod, Small Eye

**LG:** 24 5/16" c-c

**Bushings:** TS38000/TS38000

**Freightliner:** 16-18972-000, 681-326-72-16



## TR46-41000

### Torque Rod

**LG:** 24 3/16" c-c

**Bushings:**  
TS38000/TS38000

**Freightliner:** 16-15632-000,  
16-16749-002



## TR46-41175

### Torque Rod

**LG:** 23 1/2" c-c

**Bushings:**  
TS38000/TS38000

**Freightliner:** 681-326-27-16



## TR46-41316

### Torque Rod, Small Eye

**LG:** 22 7/8" c-c

**Bushings:**  
TS00-22500/TS00-22500

**Freightliner:** 16-16749-000,  
681-326-6316



## TR46-41716

### Torque Rod, Small Eye

**LG:** 23 15/16" c-c

**Bushings:**  
TS00-22500/TS00-22500

**Freightliner:** 16-15632-01,  
16-18972-001, 16-16749-001, 681 326 67 16



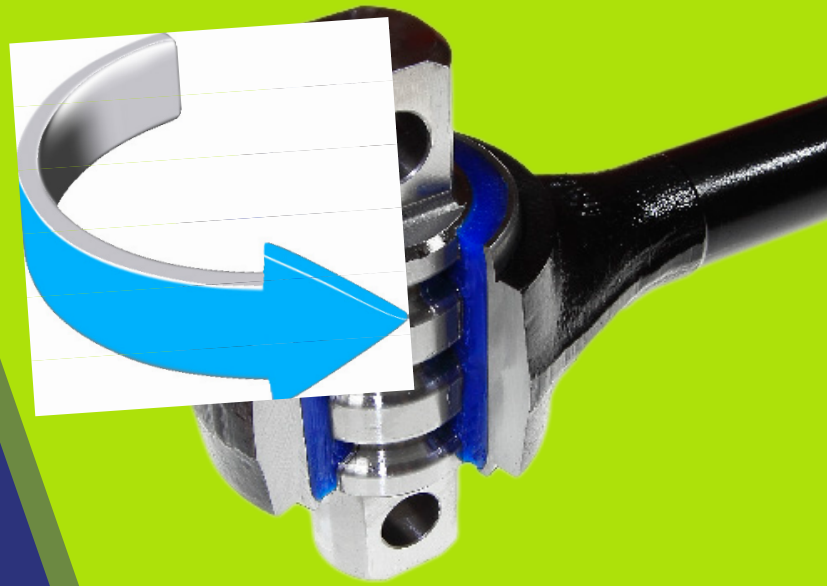
ATRO Part #	Rod type	Length	Bushings	Cross Reference
TR46-41003	Small Eye Torque Rod	20 1/4" c-c	TS00-22500/ TS00-22500	16-16749-003
TR46-41016	Large Eye Torque Rod	24 7/16" c-c	TS38000/TT38000	680-326-00-16
TR46-41053	Small Eye Torque Rod	16 3/8" c-c	TS00-22500/TS00-22500	16-03053-000, 16-19568-000, 16-13053-000, 16-19505-000
TR46-41351	Small Eye Torque Rod	16 1/8" c-c	TS00-22500/TS00-22500	16-16141-000, 16-19351-000
TR46-41972	Small Eye Torque Rod	23 13/16" c-c	TS00-22500/TS00-22500	16-15632-001
TR46-43016	Small Eye Torque Rod	16 5/8" c-c	TS00-22500/TS00-22500	681-626-6016, 16-19505-000
TR46-46002	Twist Torque Rod	24 7/16" c-c	TS38000/TT38000	16-14149-002
TR46-46003	Twist Torque Rod	24 7/16" c-c	TS38000/TT38000	16-14149-003
TR46-46016	Small Eye Torque Rod	17" c-c	TS00-22500/TH00-22500	681-326-00-16
TR46-49002	Large Eye Torque Rod	23 1/4" c-c	TS46-22300/TS46-22300	16-15002-001, 16-15002-000
TR46-49004	Large Eye Torque Rod	26 3/8" c-c	TS46-22300/TS46-22300	16-15004-001, 16-15004-000
TR46-49998	Large Eye Torque Rod	24 7/16" c-c	TS46-22300/TS46-22300	16-14998-001, 16-14998-000
TR94-41458	Large Eye Torque Rod	22 3/8" c-c	TS38000/TS38000	35801-3458
TR94-41514	Large Eye Torque Rod	22 1/2" c-c	TH99-22101/TH99-22101	35801-3514, IPC947-271



## ATRO's Rotating Pin Torque Rod Bushing

**Better engineering. Faster, simpler installation.**

ATRO's innovative torque rods have rotating pins with custom engineered polyurethane bushings. They install easier and last longer than competitor parts. No dry out, no corrosion, no wind up.



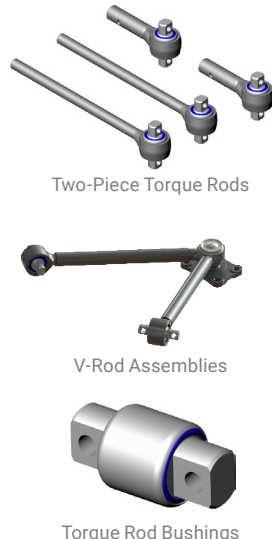
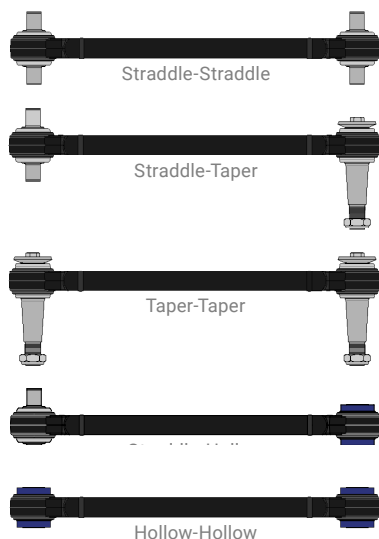
The ATRO torque rod pin can rotate a full 360° and adjust to any clocking angle for fast, easy installation.

**ATRO parts outperform rubber parts by 3-5 times.**

- ATRO polyurethanes are 3-5 times stronger than rubber.
- Resistant to oils, grease, road salt, and other chemicals.
- Specific compounds optimize the performance of each part.



Find the rod you need fast with ATRO's Torque Rod Finder.



**Save time and cost with ATRO Torque Rods.**

- Less inventory: one rod fits any clocking angle.
- Eliminates bushing wind up (typical with rubber).
- Reduces stress on the ENTIRE suspension.
- Longer life reduces customer's operating costs.

**Available configurations:**

- Large-Eye Torque Rods
- Small-eye Torque Rods
- Two-Piece Torque Rods
- V-Rods
- Custom Rods



# Suspension Schematics

## Freightliner FAS II

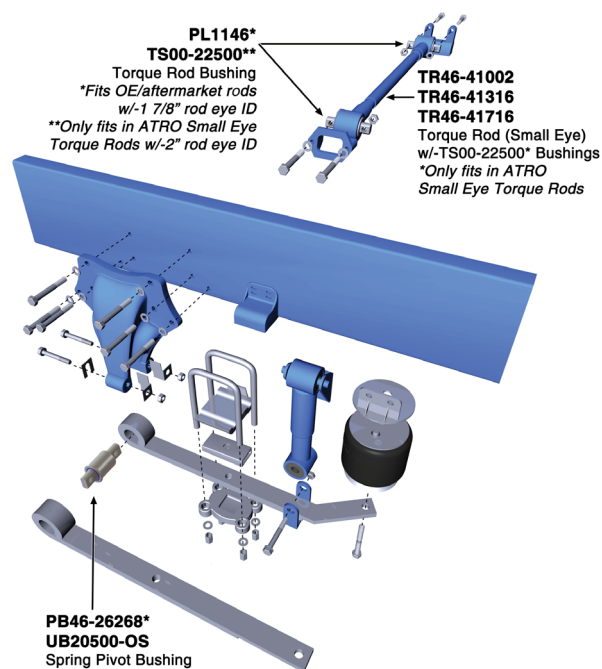
- Popular in over-the-road applications
- Designed to cushion load and reduce sway in turns
- Features an underslung parabolic leaf spring trailing arm

### ATRO Spring Pin Solution (PB46-26268; UB20500-OS)

- Rotating pin design with flanged outer sleeve limits travel
- Revolving inner pin eliminates bushing wind-up
- Oversized version available (UB20500-OS)

### ATRO Torque Rods

- ATRO offers complete replacement rods for the three different length options
  - TR46-41716 (23 15/16")
  - TR46-41316 (22 7/8")
  - TR46-41002 (24 5/16")



## Freightliner TufTrac

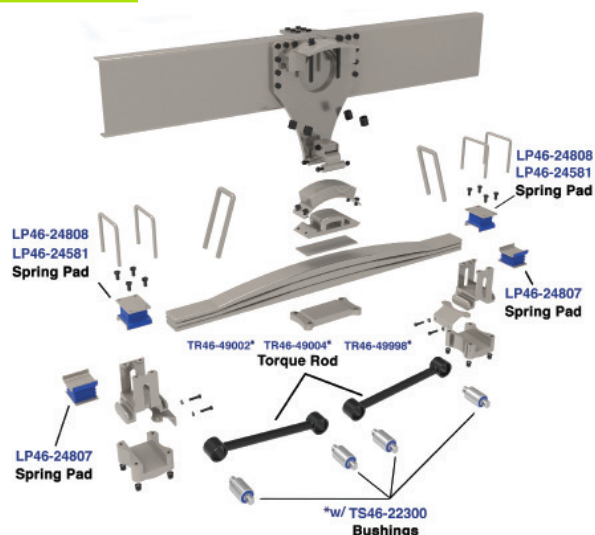
- Popular in vocational and high-center-of-gravity applications
- Designed to smooth out ride, reduce noise and vibration, and provide ground clearance
- Features parabolic springs with elastomeric load cushions.

### ATRO Spring End Pad Solutions

- Proprietary polyurethane resists compression set while absorbing shock and dampening vibration.
  - LP46-24808 – upper pad, 40k suspension
  - LP46-24581 – upper pad, 46k suspension
  - LP46-24807 – lower pad, used on both 40k & 46k suspension

### Atro Torque Rods

- Atro offers complete replacement rods for the three different length options
  - TR46-49002 – used on 40k suspension with 54" axle spacing
  - TR46-49004 – used on 46-52k suspension with 60" axle spacing
  - TR46-49998 – used on 46-52k suspension with 56" axle spacing

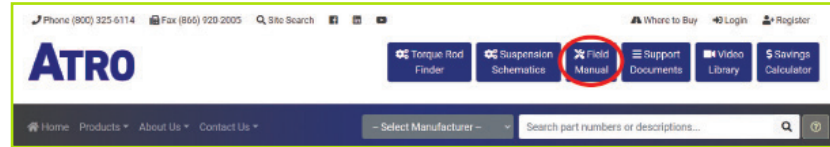




A valuable preventive maintenance guide from ATRO. To view the digital Field Manual follow the instructions below or scan the QR code to download a copy to your device.

Go to [www.atrobushing.com](http://www.atrobushing.com)

Click on Field Manual in the upper right hand corner



Scan QR Code to download:  
ATRO Field Manual

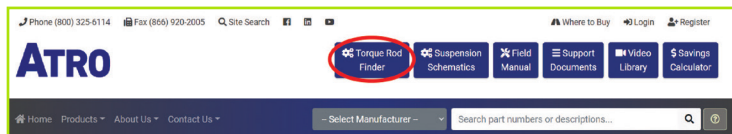


## Torque Rod Finder

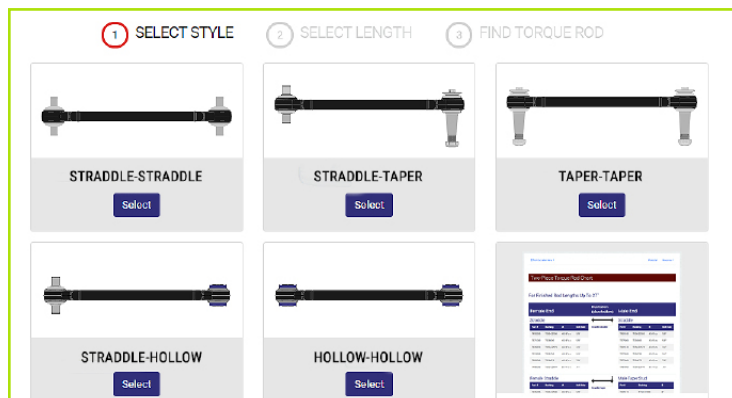
ATRO has compiled a master database to simplify and expedite the process of finding replacement rods. Shorten the time at the counter and confirm the right part for your customer.

Go to [www.atrobushing.com](http://www.atrobushing.com)

Click on the Torque Rod Finder in the upper right corner



**1 Visually Identify the Rod**  
Select the types of bushings Straddle, Taper or Hollow



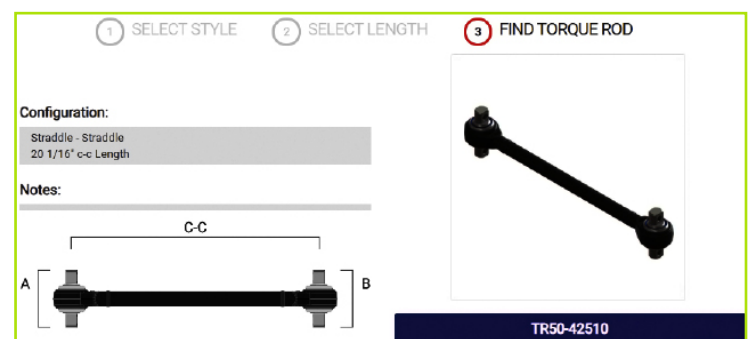
### TECH TIP:

Sometimes the field measurement of a rod can be off by a little bit. In the Torque Rod Finder, check the measurements just a little longer or shorter than what you have and often you will find a very popular rod that is exactly what you need! Most suspensions are predictable and use common torque rods!

**2 Measure the Rod**  
Measure from center of bushing to center of bushing or outside of one eye to inside of the other eye.



**3 Results found with bushing and bolt hole detail**



# ATRO



- ATRO polyurethanes are 3-5 times stronger than rubber.
- Resistant to oils, grease, road salt, and other chemicals.
- Specific compounds optimize the performance of each part.



## Contact Us

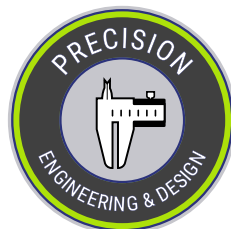
Phone: (800) 325-6114

Fax: (866) 920-2005

Email: [customerservice@atrobushing.com](mailto:customerservice@atrobushing.com)

Website: [www.atrobushing.com](http://www.atrobushing.com)

**ATRO, LLC**  
6 Bolte Lane  
St. Clair, MO 63077 USA



**ATRO Parts. Performance that drives your success.**

ATRO, LLC | 6 Bolte Lane | St. Clair, MO 63077 USA | Phone (800) 325-6114

[www.atrobushing.com](http://www.atrobushing.com)

© 2024 ATRO, LLC