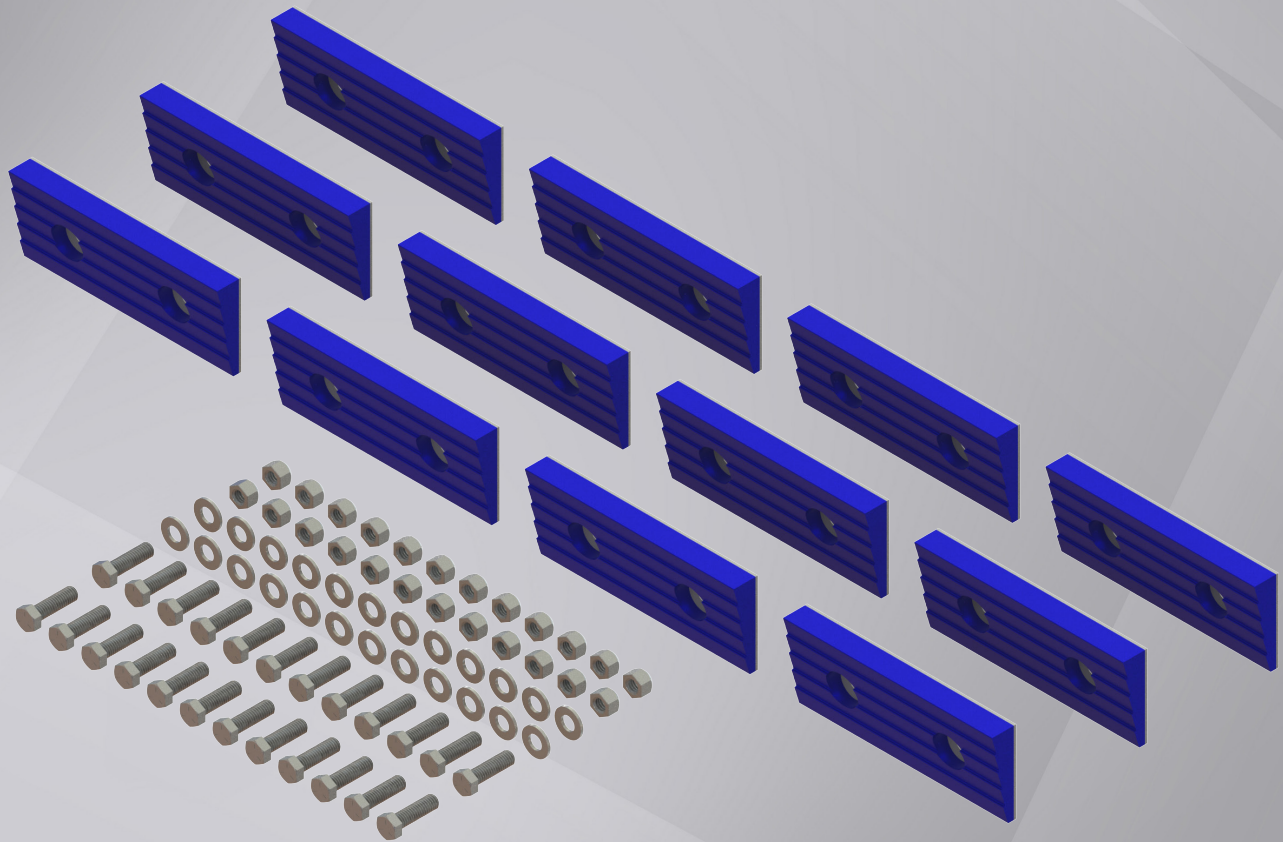


ATRO

Refuse Hauler Guide

- Driveline
- Hood Components
- Refuse Body
- Suspension
- Steering
- Torque Rods



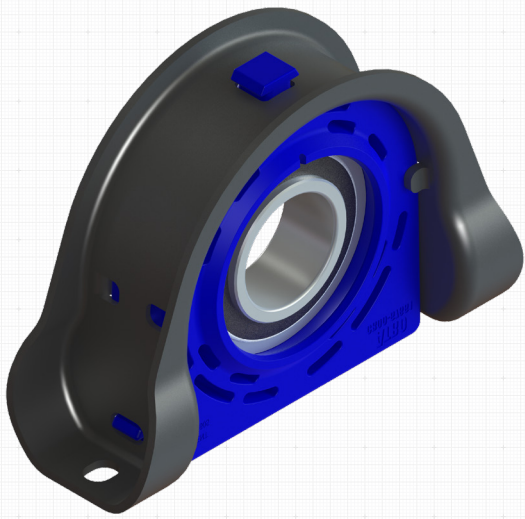
ATRO Parts. Performance that drives your success.

ATRO, LLC | 6 Bolte Lane | St. Clair, MO 63077 USA | Phone (800) 325-6114

www.atrobushing.com

© 2024 ATRO, LLC

Product Spotlight



CR00-67661 (CAD Rendering)
Carrier Bearing Assembly, Self-Aligning

CR00-67661 Carrier Bearing

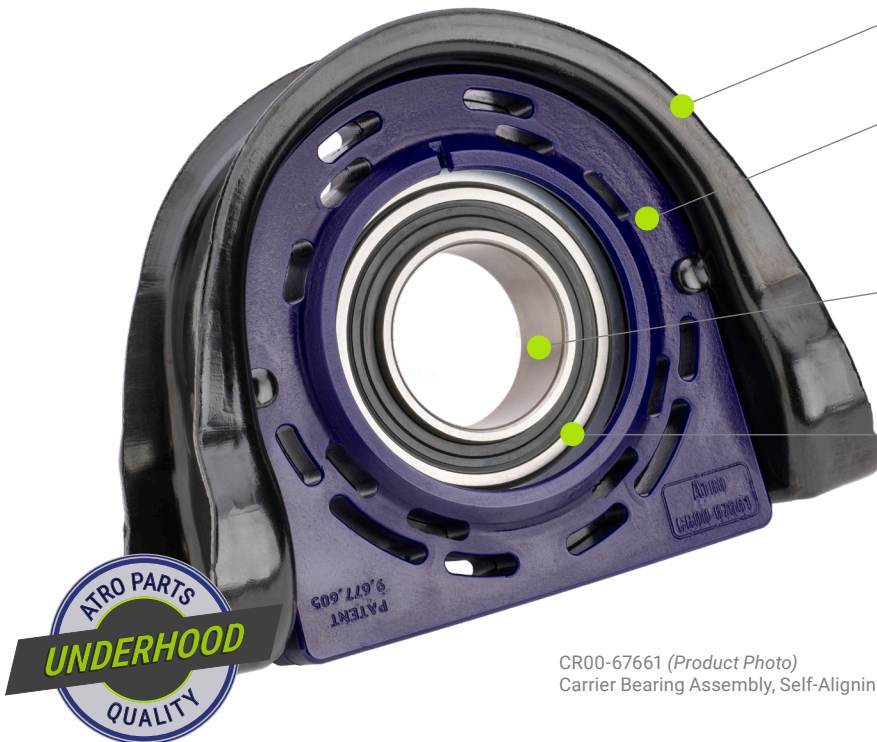
Leading the way in driveline innovation.

Our Self-Aligning Carrier Bearing with a range of +/- 10 degrees reduces the need for shims and precision adjustments.

- ATRO polyurethanes are 3-5 times stronger than rubber.
- Resistant to oils, grease, road salt, and other chemicals.
- Specific compounds optimize the performance of each part.



Unrivalled articulation for smooth operations. The self-aligning feature saves valuable time.



CR00-67661 (Product Photo)
Carrier Bearing Assembly, Self-Aligning

Durability and strength.

- Heavy-duty 7-gauge steel housing.

Polyurethane advantages.

- Absorbs vibration and reduces driveline stress.
- Won't degrade when exposed to chemicals and weather.

Patented pivoting bearing.

- Range of +/- 10 degrees of articulation.
- Sealed to retain lubricant and prevent contamination.

Easier installation.

- Self-aligning feature—no need to shim.
- Saves time and cost on every install.



CR00-67661

Carrier Bearing, Self-Aligning

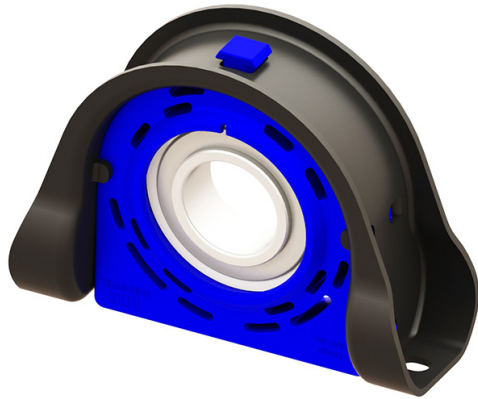
Assembly Dimensions:

LG: 10"
WD: 3 3/4"
H: 7 5/8"

Bearing Dimensions:

ID: 60mm
H: 3 3/8" center
BOLT: 1/2", 8 5/8" c-c

Spicer: 5003323
Model: 1810 Series



CR00-67121

Carrier Bearing Assembly, Series 1710

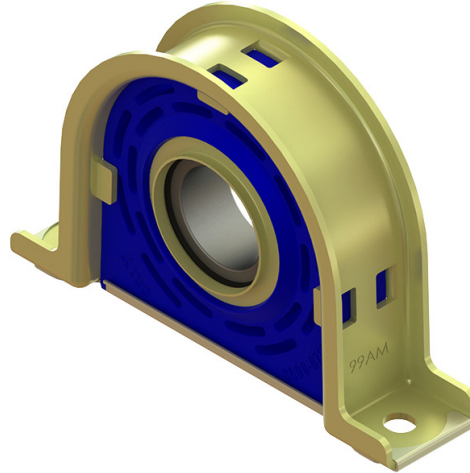
Assembly Dimensions:

LG: 9 1/4"
WD: 2 1/4"
H: 6 5/16"

Bearing Dimensions:

ID: 50mm
H: 2 25/32" center
BOLT: 1/2", 7 5/8" c-c

Spicer: 210121-1X
Model: 1710 Series



CR00-67825

Carrier Bearing Assembly, Series 1810

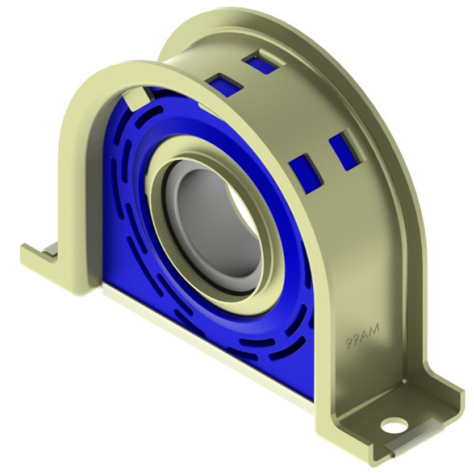
Assembly Dimensions:

LG: 10"
WD: 3"
H: 7 1/4"

Bearing Dimensions:

ID: 60mm
H: 3 1/4" center
BOLT: 1/2", 8 5/8" c-c

Spicer: 2106611-1X
Model: 1810 Series



Refuse Body Parts

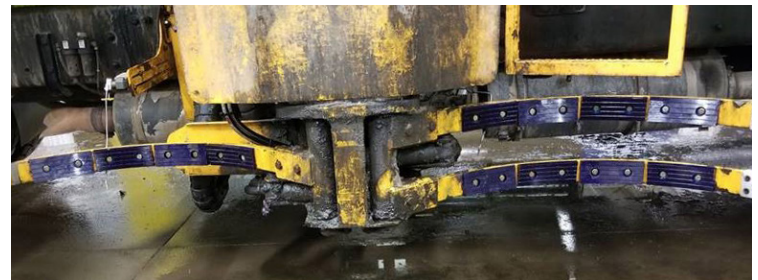
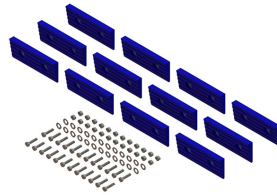
MS99-69013

Gripper Pad Kit w/Hardware

Contains:

(12) MS99-69012
(24) Bolts, 3/8" x 1-1/4"
(24) Locknuts, 3/8"
(24) Flat Washers, 3/8"

Labrie: BCB01485 (pad only)



NOTE: These pads are super high wear items, with rubber being replaced 2-3 times a year. Individual pads are available.

BP99-65535

Bumper/Arm Stop

H: 2 13/16"
WD: 4 1/2"
LG: 9"
BOLT: 5/8"; Holes 5" c-c

Heil: 1411535 Half Pack



MS99-65035

Bumper Pad

H: 3"
WD: 6"
LG: 7 7/8"
BOLT: 1/2" Bolt Hole
5 1/2" x 3 1/8" Pattern

McNeilus: 0602035



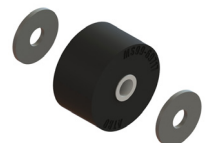
MS99-69717

Grabber Assembly Roller

ID: 1/2"
OD: 2 1/2"
WD: 1 7/16"

Contains:
(1) Roller Bushing
(2) Washers

Heil: 06-0805-001, 062-0709, 620717
McNeilus: 1108125



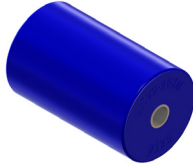
Refuse Body Parts

MS99-69718

Gripper Roller

ID: 1/2" (1/2" Bolt)
OD: 2 1/2"
LG: 4"

AMREP: 1451717



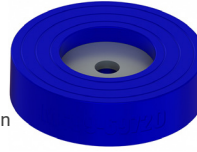
MS99-69720

Gripper Pad

ID: 1/2" (1/2" Bolt)
OD: 4"
H: 1 1/16"

AMREP: 1451720

NOTE: Metal washer molded in



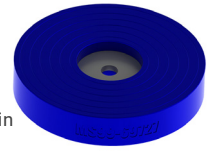
MS99-69727

Gripper Pad

ID: 1/2" (1/2" Bolt)
OD: 5 13/16"
H: 1 1/16"

AMREP: 1451727

NOTE: Metal washer molded in



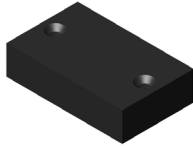
MS99-69779

Bumper Pad

LG: 3 1/4"
WD: 2"
TK: 13/16"

Curotto Can: 1238779,
AC02-036

NOTE: No Warranty



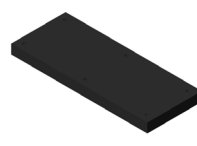
MS99-69780

Bumper Pad

LG: 10"
WD: 4"
TK: 11/16"

Curotto Can: 1238780,
AC02-034

NOTE: No Warranty



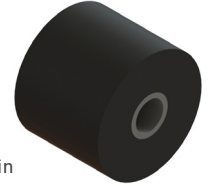
MS99-69804

Roller Gripper

ID: 5/8" Bolt
OD: 2 1/2"
WD: 2"

Heil: 062-0805, 620804,
620805 (takes 2)

NOTE: Metal washer molded in



PB00-26839

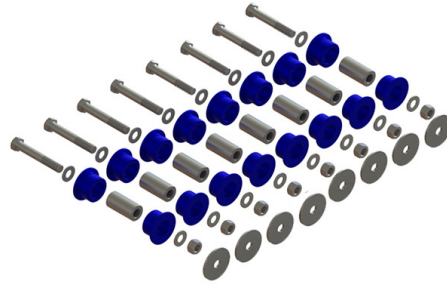
Lift Axle Bushing Kit

Contains:

- (16) PB00-36314 Bushings
- (8) Inner Sleeves
- (4) Bolts 3/4" x 5"
- (4) Bolts 3/4" x 5-1/2"
- (8) Locknuts
- (16) Washers
- (8) Shim Washers

Hendrickson: R008839

Watson Chalin: SRK1190-1

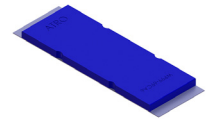


WP99-69CA6

Gripper Pad

LG: 12 1/2"
WD: 4"
TK: 1/2"

Faris Machinery: CA60



STEER KING™

Premium No-Ream King Pin Repair Kits

Steer King offers a specialized solution for heavy duty truck maintenance with a focus on quality, efficiency, and customer support. Our no-ream king pin repair kits stand out in the market for their ease of installation and long-lasting performance, providing significant value to our customers.

Steering Product Line Overview



The highest-quality king pin repair kits for heavy-duty trucks.

Our kits include precision machined parts for a true fit and long-lasting performance.



No-Ream Steel Spiral Kits

- Easy install.
- Maximum wear resistance.
- Three-year warranty.

T-Handle Bushing Installation Tool



No-Ream Bronze Kits

- More grease.
- Longer life.
- Two-year warranty.

Bronze Bushing and Seal Driver Tool



We've engineered these industry-leading features into every king pin kit so every mechanic can get a great result and a fast, easy installation.

1. Kit Box and Tray

The best box in the business keeps getting better.



3. Pre-Packed* Bearings

Saves you the effort—and 10-20 minutes per install.

*Note: Mack bearings are not pre-packed.



2. Bi-Directional Lip Seals

Lip seals install fast—in either direction.



4. Grease Grooves On All King Pins

Optimize lubrication on the king pin assembly.



5. Spare Parts

High quality spares keep you up and running.



6. Proprietary Manufacturing Process

Better bushing to pin interaction = longer parts life.



Steering

Chevrolet										
SKS Spiral	SKB Bronze	QWIK	PLUS	King Pin Dimensions	Bushing/Seal Tool	T-Handle	MODEL	AXLE	OEM NO.	
SKS0893112	SKB0893112	KH931L	78.931.12	1.999 x 11.21	SKPTH931L	SKT060S or SKT060L	3 ½ Ton - D90, F90, H90, J90, M90, T90, W90	16000# (FL-931)	2036352	
SKS18005	SKB18005	K180E	70.180.05	1.872 x 9.96	SKPT147E	SKT090S or SKT090L	Top Kick - T - Series	EFA18F3 16000#	3927942 12541348	
Dodge										
SKS Spiral	SKB Bronze	QWIK	PLUS	King Pin Dimensions	Bushing/Seal Tool	T-Handle	MODEL	AXLE	OEM NO.	
SKS0890112	SKB0890112	KH901L	78.901.12	1.999 x 11.04	SKPTH931L	SKT060S or SKT060L	4 Ton - C900, CN900, CT900, CNT900, NC900, NCT900, VL900, VLT900	16000#		
							5 Ton - C1000, CT1000, DN1000, DNT1000, LN1000, LNT1000	16000#		
Ford										
SKS Spiral	SKB Bronze	QWIK	PLUS	King Pin Dimensions	Bushing/Seal Tool	T-Handle	MODEL	AXLE	OEM NO.	
SKS0890112	SKB0890112	KH901L	78.901.12	1.999 x 11.04	SKPTH931L	SKT060S or SKT060L	800-850-880 Series	16000# Air Brakes	D0HZ-3111E	
								18000# Hydraulic Brakes	D0HZ-3111E	
								20000#	D0HZ-3111E	
								16000# Air Brakes	D0HZ-3111E	
								900-950 Series	18000# Hydraulic Brakes	D0HZ-3111E
								20000#	D0HZ-3111E	
SKS0893106	SKB0893106	KH931F	78.931.06	1.999 x 11.21	SKPTH931L	SKT060S or SKT060L	800-850-880 Series	16000# Air Brakes	D5HZ-3111C	
								18000# Air Brakes	D5HZ-3111C	
								20000#	D5HZ-3111C	
								16000# Air Brakes	D5HZ-3111C	
								900-950 Series	18000# Air Brakes	D5HZ-3111C
								20000#	D5HZ-3111C	
GMC										
SKS Spiral	SKB Bronze	QWIK	PLUS	King Pin Dimensions	Bushing/Seal Tool	T-Handle	MODEL	AXLE	OEM NO.	
SKS0890112	SKB0890112	KH901L	78.901.12	1.999 x 11.04	SKPTH931L	SKT060S or SKT060L	7500 Series	18000# (FL-901)	2452865	
							8500 Series	18000# (FL-901)	2452865	
							9500 Series	18000# (FL-901)	2452865	
SKS0893112	SKB0893112	KH931L	78.931.12	1.999 x 11.21	SKPTH931L	SKT060S or SKT060L	9500 Series	18000# (FL-931)	2036352	
SKS18005	SKB18005	K180E	70.180.05	1.872 x 9.96	SKPT147E	SKT090S or SKT090L	KODIAK - C Series	EFA18F3 16000#	12541348	
SKS18118	SKB18118	K181R	70.181.18	1.999 x 11.21	SKPTH931L	SKT060S or SKT060L	KODIAK - C Series	16000# (FH4)	88936136	
International/Navistar										
SKS Spiral	SKB Bronze	QWIK	PLUS	King Pin Dimensions	Bushing/Seal Tool	T-Handle	MODEL	AXLE	OEM NO.	
SKS0890112	SKB0890112	KH901L	78.901.12	1.999 x 11.04	SKPTH931L	SKT060S or SKT060L	With Rockwell Axles:	18000# FL-901	303140C92	
								18000# FA-136	303140C92	
SKS0893112	SKB0893112	KH931L	78.931.12	1.999 x 11.21	SKPTH931L	SKT060S or SKT060L	With Rockwell Axles:	18000# FL-931 FL-941	474520C91	
								16000# FA-231	474520C91	
								18000# FA-232	474520C91	
SKS18018	SKB18018	K180R	70.180.18	1.999 x 11.21	SKPTH931L	SKT060S or SKT060L	With Rockwell Axles:	18000# 02-ARU	2505495C91	
Mack										
SKS Spiral	SKB Bronze	QWIK	PLUS	King Pin Dimensions	Bushing/Seal Tool	T-Handle	MODEL	AXLE	OEM NO.	
SKS0890112	SKB0890112	KH901L	78.901.12	1.999 x 11.04	SKPTH931L	SKT060S or SKT060L	With Rockwell Axles:	18000# FL-901	205SQ12	
SKS53613		K536M		2.360 x 8.92			DM, RM, DUMP, MIXER, CONSTRUCTION, REFUSE	18000# FXL18	301SQ53	
SKS61613		K616M	70.616.13	2.125 x 8.75			DM, RM, DUMP, MIXER, CONSTRUCTION, REFUSE	20000# FXL20	301SQ53	
								18000# FA-616 FA-617	301SQ52	
								20000# FA-616 FA-617	301SQ52	

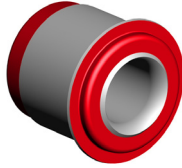
Rockwell/Meritor									
SKS Spiral	SKB Bronze	QWIK	PLUS	King Pin Dimensions	Bushing/Seal Tool	T-Handle	MODEL	AXLE	OEM NO.
SKS0890112	SKB0890112	KH901L	78.901.12	1.999 x 11.04	SKPTH931L	SKT060S or SKT060L	Non-Driving Front Steering Axles	16000# FH-901	168, 170
							Non-Driving Front Steering Axles	18000# FL-901	168, 170
SKS0893112	SKB0893112	KH931L	78.931.12	1.999 x 11.21	SKPTH931L	SKT060S or SKT060L		18000# FL-931, FL-933, FL-941, FL-943, FL-951	R200198, R201312
								18000# FL-931 FL-933, FL-941 FL-943, FH-951	198, 1312
								20000# MFS-20142A	R201477
SKS18018	SKB18018	K180R	70.180.18	1.999 x 11.21	SKPTH931L	SKT060S or SKT060L	Non-Driving Front Steering Axles	16000# MFS-161015 MFS-16122A MFS-16143A	R201475
							Non-Driving Front Steering Axles	18000# MFS-18143A	R201475
SKS18118	SKB18118	K181R	70.181.18	1.999 x 11.21	SKPTH931L	SKT060S or SKT060L	Non-Driving Front Steering Axles	16000# MFS-16133A	R201476
							Non-Driving Front Steering Axles	18000# MFS-18133ANN	R201476
							Non-Driving Front Steering Axles	20000# MFS-20133ANN	R201476
SKS20018		K200R		1.999 x 10.79	SKPTH931L	SKT060S or SKT060L	Non-Driving Front Steering Axles	18000# MFS-18133Ank	R201482
								20000# MFS-20133Ank	R201482
Spicer/Dana/Eaton									
SKS Spiral	SKB Bronze	QWIK	PLUS	King Pin Dimensions	Bushing/Seal Tool	T-Handle	MODEL	AXLE	OEM NO.
SKS16019	SKB16019	K160S	70.160.19	2.046 x 11.00	SKPT141S	SKT060S or SKT060L	02 CODES	16000# 02-ADH, 02-AEU, 02-AEV, 02-AEW, 18000# 02-ADJ, 20000# 02-ADK	220KK100, 1685405C91
							I CODES	16000# I-160S, I-160W 18000# I-180S, I-180W 20000# I-200S, I-200W 22000# I-220S, I-220W	220KK100, 1685405C91, 329023
SKS18005	SKB18005	K180E	70.180.05	1.872 x 9.96	SKPT147E	SKT090S or SKT090L	EFA CODES	18000# EFA18F3, EFA18F4, 20000# EFA20F4, 22000# EFA22T2, EFA22T5, 24000# EFA24T2, EFA24T5	811525, 1008500, 329432, 329433, 329434
SKS18018	SKB18018	K180R	70.180.18	1.999 x 11.21	SKPTH931L	SKT060S or SKT060L	02 CODES	18000# 02-ARU	2505495C91
SKS18118	SKB18118	K181R	70.181.18	1.999 x 11.21	SKPTH931L	SKT060S or SKT060L	02 CODES	18000# 02-ARZ, 02-ARY	
SKS20019		K200S		2.046 x 10.07	SKPT141S	SKT060S or SKT060L	D CODES	20000# D2000F, 22000# D2200F	331434
SKS20119		K201S		2.046 x 10.07	SKPT141S	SKT060S or SKT060L	D CODES	20000# D2000F, 22000# D2200F	331435
Volvo									
SKS Spiral	SKB Bronze	QWIK	PLUS	King Pin Dimensions	Bushing/Seal Tool	T-Handle	MODEL	AXLE	OEM NO.
SKS53613		K536M		2.360 x 8.92				18000# FXL18 20000# FXL20	301SQ53 301SQ53
White/Westport									
SKS Spiral	SKB Bronze	QWIK	PLUS	King Pin Dimensions	Bushing/Seal Tool	T-Handle	MODEL	AXLE	OEM NO.
SKS0890112	SKB0890112	KH901L	78.901.12	1.999 x 11.04	SKPTH931L	SKT060S or SKT060L	Trend Models	18000# (FL-901) 16000# (FH-901)	1720728, 1739844 168, 170

MM96-62657-HT

Engine Mount, HT

ID: 1 1/2"
OD: 3"
LG: 3"

Autocar: 8077380

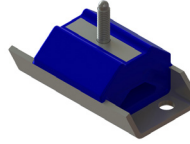


TM99-63506

Transmission Mount

LG: 4.75"
WD: 2.85"
BOLT: 15/32", 3 3/4" c-c
STUD: M10x1.5

Autocar: PA014-052013



TR13-41022

Torque Rod 22" c-c

LG: 22" c-c
Bushings: TS38000/TT38000

Autocar: 35801-0033



TR13-41635

Torque Rod 25" c-c

LG: 25" c-c
Bushings: TS59-22400/TT38000

Autocar: A3580010-635,
S3580001-635, S3580003-635



NOTE: TS59-22400 is High Articulation Bushing

Chalmers

HW19-29201

Bolt Kit Type "1" Joint

OD: 5/8" Bolt
LG: 5"
Contains:
(1) Flanged Bolt
(1) Flanged Locknut

Chalmers: HDW379,
HDW381, K880640



HW19-29202

Bolt Kit Type "2" Joint

OD: 5/8"-11 Bolt
LG: 5 1/2"
Contains:
(1) Flanged Bolt
(1) Flanged Locknut

Chalmers: HDW379,
HDW382, K880231



LP19-24002

Load Spring

ID: 2"
OD: 9 1/2"
H: 8"

Chalmers: 15002



LP19-24010

Load Spring

ID: 2"
OD: 6.75"
H: 8"

Chalmers: 15010



LP19-24015

Load Spring

ID: 2"
OD: 8 1/4"
H: 8"

Chalmers: 15015



LP19-24026

Load Spring

ID: 2"
OD: 10 1/2"
H: 8"

Chalmers: 15026



MS19-29028

Restrictor Can, Standard

OD: 12 5/8"
H: 4 7/16"

Chalmers: 373020,
373028



MS19-29029

Restrictor Can, High Stability

ID: .394
OD: 11 5/8"
H: 5 3/16"

Chalmers: 373021,
373029



MS19-29055

Spigot Cap, Type 2

ID: 5/8" Bolt
OD: 4 1/2"

Chalmers: 800055



MS19-29201

Spigot Cap, Type 1

ID: 5/8" Bolt
OD: 4"

Chalmers: 800201



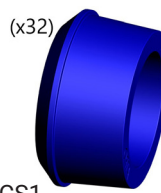
KT19-22001

Torque Rod Bushing Kit, PL1047 (32)

ID: 2 7/16"
OD: Large 3 5/8"
Small 3 1/4"
LG: 1 15/16"
Contains:
(32) PL1047

Chalmers: 22128, 22128CS1

16 piece kit also available: KT19-22000



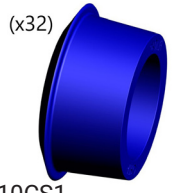
KT19-22003

Torque Rod Bushing Kit, PL1046 (32)

ID: 2 9/16"
OD: Large 4 5/16"
Small 3 9/16"
LG: 2 1/8"
Contains:
(32) PL1046

Chalmers: 800010, 800010CS1

16 piece kit also available: KT19-22002

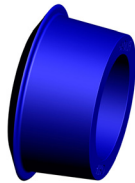


PL1046

Torque Rod Bushing

ID: 2 9/16"
OD: Large 4 5/16"
Small 3 9/16"
LG: 2 1/8"

Chalmers: 800010,
800010CS1

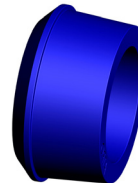


PL1047

Torque Rod Bushing

ID: 2 7/16"
OD: Large 3 5/8"
Small 3 1/4"
LG: 1 15/16"

Chalmers: 22128,
22128CS1

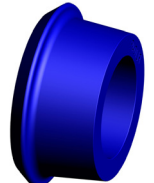


PL1049

Torque Rod Bushing, Oversized

ID: 2 1/2"
OD: Large 4 9/16"
Small 3 5/8"
LG: 2 1/8"

Chalmers: 800009



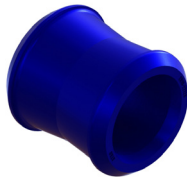
TH19-22128

Torque Rod Bushing

ID: 2 3/8"
OD: Large 3 11/16"
Small 3 1/8"
LG: 3 3/4"

Chalmers: 22082, 22128

NOTE: 1 Piece design
For 2-Piece design see PL1047

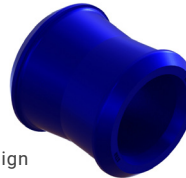


TH19-22129

Torque Rod Bushing-Oversized

ID: 2 3/8"
OD: Large 3 11/16"
Small 3 3/16"
LG: 3 3/4"

Chalmers: 22129
NOTE: 1 Piece Oversized design



Scan QR code for
**Chalmers
Suspension
Schematic**



Freightliner

HL00-64001

Hood Latch

LG: 8.75"
WD: 2.3"

Freightliner: 680-880-01-60, A680880160



HL00-64002

Hood Latch Catch

LG: 3.5"
WD: 1"
D: 2.1"

Freightliner: 17-14781-000



MM00-62000-HT

Engine Mount Kit, Front, HT

ID: 13/16"- Use 3/4" Bolt
OD: 3"
TK: 13/16" Sleeve

Contains:
(1) Motor Mount (Upper and Lower Included)
(1) Spacer Sleeve

Freightliner: LOR SSB33 1000 2

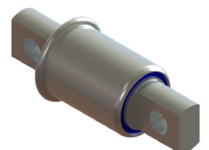


PB46-26268

Pivot Bushing (Anti-Walk)

OD: 2.5"
BOLT: 3/4" Hole, 5 21/32" c-c

Freightliner: 16-13962-000, 16-16412-000,
16-18035-000, 681-325-01-50, 681-325-02-50



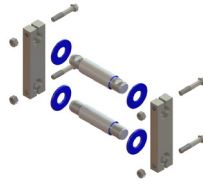
SK46-10000

Spring Eye Shackle Kit

OD: 1 1/2" bushing

Contains:

- (2) SP46-11373 Bushings
- (2) Sidebars
- (4) Bolts
- (4) Locknuts



Freightliner: 16-11890-000, 16-11890-001, 16-12302-000, 16-12373-000, 16-12399-000, 16-13470-000, A16-12301-000

NOTE: Cannot be used on vehicles requiring 1-5/8" hanger bushing

TR50-41635

Torque Rod 24 15/16" c-c

LG: 24 15/16" c-c

Bushings:

TS38000/TT38000

Freightliner: HDR 62350 635



Hendrickson

EB50-21013

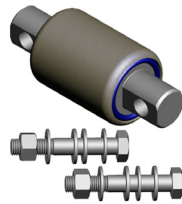
Bar Pin Bushing Kit

OD: 4 3/8"

BOLT: 1 1/16" Holes

Contains:

- (1) Bar Pin Bushing
- (2) Bolts
- (2) Nuts
- (4) Shims
- (4) Washers



Hendrickson: 34013-087L, 34013-088L, 34013-188L, 34013-87, 3401388, 50150000, 50160000, BP199

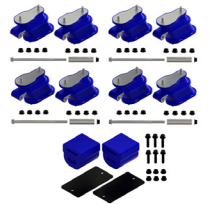
KT50-25002

Suspension Kit

Contains:

- (4) LP50-24179
- (1) LP50-24902

Hendrickson: 64179-002, 64179-037, 64179-048, 64179-049, 65743-000, 65902-004

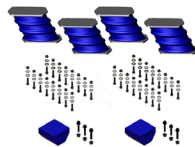


KT50-25005

Suspension Kit, HN, Full

Contains:

- (2) LP50-24000
- (2) LP50-24974
- (32) 7/16"-20x 1 1/4" Grade 8 Bolt, zinc plated
- (32) Locknuts
- (64) Flat Washers



Hendrickson: 49377, 49377000, 60314000, 60879, 6087900L, 64179004, 641794

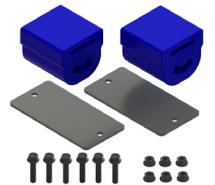
LP50-24902

Progressive Load Spring Kit

Contains:

- (2) LP50-24778
- (2) MS50-29791
- (6) Bolt, 1/2"-13 X 2 1/4", Flanged
- (6) Locknuts

Hendrickson: 65902-004



TR50-41615

Torque Rod 24 1/4" c-c

LG: 24 1/4" c-c

Bushings:

TS38000/TT38000

HHendrickson: 62350-615, 8244-0099-610



TR50-41635

Torque Rod 24 15/16" c-c

LG: 24 15/16" c-c

Bushings:

TS38000/TT38000

Hendrickson: 62350-635



TR50-42565

Torque Rod 22 1/4" c-c

LG: 22 1/4" c-c

Bushings:

TS38000/TS38000

Hendrickson: 62000-565, 62001-565, 62011-565, 67428565, 8240-0000-565



TR50-41635

Torque Rod 24 15/16" c-c

LG: 24 15/16" c-c
Bushings:
 TS38000/TT38000

International: HD62350635,
 HUD62350635, ZAK62350635,
 ZJF62350635



TR55-418C1

Torque Rod 25 3/8" c-c

LG: 25 3/8" c-c
Bushings:
 TS38000/TS38000

International: 3580088C1,
 3548381C1, 3580088C3,
 4C4Z4612AA, 501565C2



Scan QR code
 for info on
**International
 Corporate
 Air/IROS**



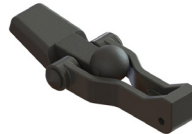
Kenworth

HL59-64107

Hood Latch

LG: 5 1/2"

Kenworth: K147-107, K147C106



KT59-62004-HT

Engine Mount Kit w/Hardware, Rear (High Temp)

Contains:
 (2) Upper Mounts
 (2) Lower Mounts
 (2) Wear Plates
 (2) Wear Sleeves
 (2) Bolts 20mm x 120mm
 (4) Flat Washers
 (2) Locknuts



Kenworth: K066-377, K066-391, K066-421

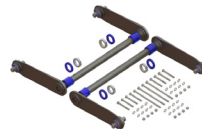
NOTE: Both mounts must be ATRO hi-temp poly engine mounts.
 Do not mix w/rubber or non-compatible poly mounts.

SW59-29000-KIT

Sway Bar Complete Conversion Kit

Axle Spacing: 52"
OD: 58mm (bar)
LG: 19 1/2" (arm) C-C

Contains:
 (2) Sway Bar
 (4) Sway Bar End Bushings
 (4) SW59-29465 Wrap Bushings
 (4) SW59-29461 Thrust Bushings
 (4) SW59-29599 Shaft Collars
 (1) HW59-29000 Hardware Kit



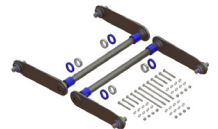
Kenworth: C65-1000, C65-1013

SW59-29001-KIT

Sway Bar Complete Conversion Kit

Axle Spacing: 54"
OD: 58mm (bar)
LG: 20 1/2" (arm) C-C

Contains:
 (2) Sway Bars
 (4) TS38000 Sway Bar End Bushings
 (2) SW59-29465 Wrap Bushing Kits
 (4) SW59-29461 Sway Bar Thrust Bushings
 (4) SW59-29599 Sway Bar Shaft Collars
 (1) HW59-29000 Hardware Kit



Kenworth: C65-1001

Both sway bars must be replaced to be covered under warranty.

TR59-41008

Torque Rod 20 1/4" c-c

LG: 20 1/4" c-c
Bushings:
 TS59-22400/TS59-22400

Kenworth: C65-1008, C65-1009

NOTE: Heavy Duty; High articulation bushings; Bushings do NOT rotate



TR59-41474

Torque Rod 19 3/4" c-c

LG: 19 3/4" c-c
Bushings:
 TS59-22400/TS59-22400

Kenworth: K195-472, K195-474

NOTE: Heavy Duty; High articulation bushings; Bushings do NOT rotate



HM62-64362

Hood Rest Bracket, Right

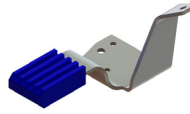
Mack: 20802362



HM62-64371

Hood Rest Bracket, Left

Mack: 20802371

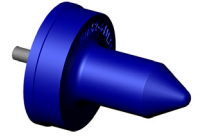


HM62-64M31

Pin Hood Guide

OD: Large 3 5/16"
Small 1 1/2"
LG: 4 1/16"
BOLT: 3/8"-24 UNF x
1 1/8" Thread

Mack: 25QM31



KT62-62216-HT

Insulator Kit (High Temp)

Contains:

(8) PL1017-HT
(8) Washers
(4) 3/4"-16 x 6 1/2" Bolts
(4) Locknuts

Mack: 204SX216



KT62-62389-HT

Insulator Kit (High Temp)

Contains:

(8) PL1017-HT
(8) Washers
(4) 3/4"-16 x 5" Bolts
(4) Locknuts

Mack: 204SX389



MM62-63582-HT

Engine/Trans Mount Assy, High Temp

ID: 3/4"
OD: Large 3 3/4"
Small 2 1/2"

Mack: 20QL336, 25153582



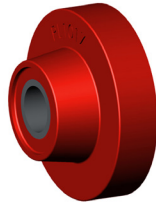
PL1017-HT

Transmission Mount (High Temp)

ID: 3/4"
OD: Large 3 3/16"
Small 1 11/16"
H: 1 1/2"

Mack: 20QL1118A, 20QL1175, 25167342

NOTE: See KT62-62216-HT & KT62-62389-HT for complete kits



SK50650-HW

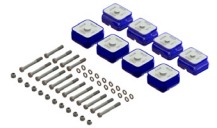
Insulator Kit w/Hardware

Contains:

(4) MA32000
(4) MA37200
(4) 7/8"-9UNC 6" Bolts
(12) 7/8"-14UNF 7 1/2" Bolts
(12) Locknuts
(16) Flat Washers

Mack: Upper Pads - 110QK32BP1, 25115289;
Lower Pads - 10QK372, 10QK389, 25124724

NOTE: Complete Camelback Kit; Ships in 2 boxes



SK62-50340

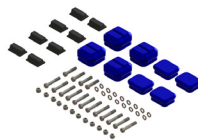
Insulator Kit w/Hdwr & Spacer Blocks

Contains:

(4) MA36500 Load Pads, Upper
(4) MA36000 Load Pads, Lower
(8) Insulator Spacer Block
(4) Bolts, 7/8"-9 UNC 4"
(12) Bolts, 7/8"-14 UNF 5"
(12) Locknuts
(16) Flat Washers

Mack: Upper Pads - 10QK343P7, 10QK365A, 10QK367, 25121508;
Lower Pads - 10QK36B, 10QK36C, 10QK388, 21036254, 25125064

NOTE: Complete Camelback Kit; Ships in 2 boxes



SK62-50380

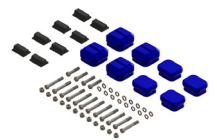
Insulator Kit w/Hdwr & Spacer Blocks

Contains:

(4) MA37000 Load Pads, Upper
(4) MA36000 Load Pads, Lower
(8) Insulator Spacer Block
(4) Bolts, 7/8"-9 UNC 4"
(12) Bolts, 7/8"-14 UNF 5"
(12) Locknuts
(16) Flat Washers

Mack: Upper Pads - 10QK370, 25115012; Lower Pads - 10QK36B,
10QK36C, 10QK388, 21036254, 25125064

NOTE: Complete Camelback Kit; Ships in 2 boxes



TR50-41635

Torque Rod 24 15/16" c-c

LG: 24 15/16" c-c
Bushings:
 TS38000/TT38000

Mack: 4000-62350635



TR62-41180

Torque Rod 18" c-c

LG: 18" c-c
Bushings:
 TS38000/TM38000

Mack: 17QF251P11,
 17QF463P180, 17QF464P180,
 1RY48P23, 25153567, 25162529



TR62-41220

Torque Rod 22" c-c

LG: 22" c-c
Bushings:
 TS38000/TS38000

Mack: 17QF457P220,
 17QF460P220, 17QF471M6,
 17QF481M, 17QF511, 25100582,
 25155896, 25174706



TR62-41243

Torque Rod 24 1/4" c-c

LG: 24 1/4" c-c
Bushings:
 TS38000/TS38000

Mack: 17QF261P23,
 17QF352M2, 17QF460P243,
 17QF473M4



TR62-413M2

Torque Rod 21" c-c

LG: 21" c-c
Bushings:
 TS38000/TS38000

Mack: 17QF460P210



TR62-413M3

Torque Rod 20" c-c

LG: 20" c-c
Bushings:
 TS38000/TS38000

Mack: 17QF358, 17QF359,
 17QF460P200, 17QF473M,
 25014582, 25170831



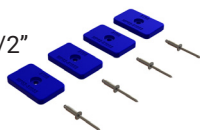
WP62-61003

Vibration Kit

LG: 2 1/4" Pad
WD: 1 3/8" Pad
H: 1/4" Pad
Rivet: 3/16" Diameter x 1/2"

Contains:

- (4) Pads
- (4) Blind Rivets



Mack: 44-74, 4866KL3003,
 4866-KL3003, 9343-6223

Scan QR code for
 more info on
Mack Camelback



TR57-44645

V-Rod Rebuild Kit

Contains:

- (2) TS59-22400 Bushings
- (1) TH57-22264 Bushing
- (2) Spacer Shims
- (1) 1-8UNC x 6" Bolt & Locknut
- (4) 5/8-11UNC x 3 3/4" Bolt & Locknut
- (2) 1" Washers
- (8) 5/8" Washers



Neway: 48100511, SRK-645

TR57-44992

V-Rod Assembly

LG: 20 1/2" c-c (H/S); 20 1/4" c-c (S/S)
Bushings:
 TS59-22400/TS59-22400/TH57-22264

Neway: 90045702, 90548900, 90549992



Scan QR code for
 more info on
Neway ADZ



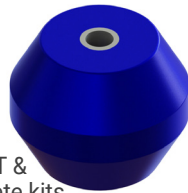
CM75-61055

Cab Mount

ID: 1/2"
OD: 3 3/8"
H: 2 3/4"

Peterbilt: 170-55

NOTE: See KT62-62216-HT & KT62-62389-HT for complete kits



High Wear Item on newer Peterbilt Trucks

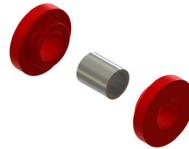
EM75-69096-HT

Exhaust/Radiator Mount; Air to Air Bushing

OD: Large 1 1/16"
Small 3/4"
H: 3/8" Flange

Peterbilt: 13-03096
25167342, 20QL1118A

NOTE: Accepts 3/8" diameter KT62-62389-HT for complete kits

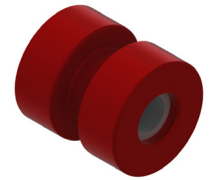


EM75-69656-HT

Exhaust Bushing (High Temp)

ID: 3/8"
OD: Large 1 1/4"
Small 3/4"
H: 1.25" Sleeve

Peterbilt: 14-14656



- ATRO polyurethanes are 3-5 times stronger than rubber.
- Resistant to oils, grease, road salt, and other chemicals.
- Specific compounds optimize the performance of each part.



HL00-64003

Hood Latch Kit

LG: 8 3/4" Latch

Contains:

- (1) HL00-64001 Hood Latch
- (1) HL00-64002 Hood Latch Catch
- (1) Bracket
- (1) Bolt
- (1) Nut



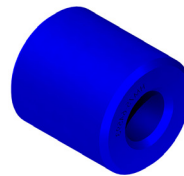
Peterbilt: 23-13857

HM75-64593

Hood Roller

ID: 5/8"
OD: 1 1/2"
LG: 1 5/8"

Peterbilt: 13-03593

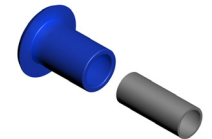


HM75-64726

Hood Mount Pivot Bushing

ID: 5/8" Sleeve
OD: Large 1 11/16"
Small 1"
LG: 1 7/8" Sleeve

Peterbilt: 13-04726
13-04727

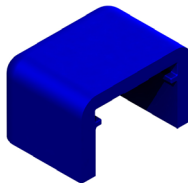


HM75-65711

Hood Bumper

LG: 2 3/8" Outside
2" Inside
WD: 3 1/8" Outside
2 1/4" Inside
H: 2" Outside
1 9/16" Inside
2" Outside

Peterbilt: 13-04711



KT75-61257

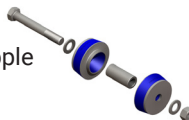
Cab/Sleeper Mount Kit

ID: 21/32"
OD: Large 3" Bushing
Small 1 13/16" Nipple
H: 1 1/8" Bushing

Contains:

- (2) CM75-61257
- (2) Flat Washers
- (1) 16MM Nut
- (1) Inner Sleeve
- (1) 16MM Bolt

Peterbilt: 20-08257, 20-08867

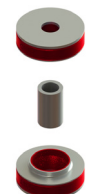


MM00-62000-HT

Engine Mount Kit, Front, HT

ID: 13/16"- Use 3/4" Bolt
OD: 3"
TK: 13/16" Sleeve
Contains:
(1) Motor Mount (Upper and Lower Included)
(1) Spacer Sleeve

Peterbilt: SSB33-1000-2



MM75-62001-HT

Engine Mount Kit, Rear (High Temp)

Contains:

- (4) MM75-62372-HT
- (4) Bolts (5/8-11X4.25" GR8)
- (4) Nuts
- (4) Snubber Washers
- (8) Washers

Peterbilt: 0518713SPL;
07-08003-003, CB2203-72, MR1001



MM75-62597-HT

Engine Mount Kit (Front), HT

ID: 1/2"
OD: 2 5/8"
LG: 1 13/16" Sleeve
TK: 13/16" Sleeve

Contains:

- (2) MM00-62970
- (1) Spacer Sleeve

Peterbilt: 05-17597

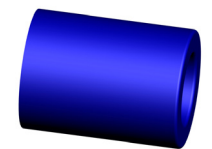


PL1062

Hood Roller

ID: 11/16"
OD: 1 1/8"
LG: 1 1/2"

Peterbilt: 13-04391



TR75-41059

Torque Rod 22 7/8" c-c

LG: 22 7/8" c-c
Bushings:
 TS38000/TS38000

Peterbilt: 03-02439,
 03-04059, C65-6013,
 c65-6027-000000581,
 SS-219-117



TR75-41108

Torque Rod 25 9/16" c-c

LG: 25 9/16" c-c
Bushings:
 TS38000/TS38000

Peterbilt: 03-05108,
 943711



TR75-41440

Torque Rod, Small Eye 17 5/16" c-c

LG: 17 5/16" c-c
Bushings:
 TS00-22500/TS50-22575

Peterbilt: 03-04327,
 C65-6026-000010440,
PACCAR: 924175,
 C65-6024-000010440



HL96-64018

Hood Latch Kit

Contains:
 (1) HL00-64002
 (1) HL96-64000

Volvo: 8174018, 1118205

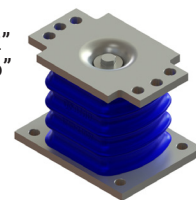


LP96-24657

Load Spring

H: 5 7/8"
BOLT: Bolt Size Top: 9/16"; Bolt Size Bottom: 1/2"
 Base Bolt Pattern: 4 bolt - 6 9/32" x 4 9/16"
 Top Bolt Pattern: 2 bolt - 7 1/16"

Volvo: 1089501, 1577873, 1609657,
 1629553, 20390836, 20536818, 3090971,
 8151413



MM96-62657-HT

Engine Mount, HT

ID: 1 1/2"
OD: 3"
LG: 3"

Volvo: 3081657



Scan QR code for
 more info on
Volvo T-Ride



TR96-44004

V-Rod Assembly 26 1/16" c-c

LG: 26 1/16" c-c
Bushings:
 TS96-22600/TS96-22600/TH96-22200

Volvo: 20367004, 20507262, 20741695,
 20741703, 22318833



TR96-44829

V-Rod Assembly 26 3/4" c-c

LG: 26 3/4" c-c (Center of Apex to Center of Arm
 Bushing)

Bushings:
 TS96-22286/TS96-22286/TH96-22200

Volvo 3172829, 8073569



TR96-45568

Torque Rod, Adjustable (Offset) 23 5/8" c-c

LG: 23 5/8" c-c
 Adjustable 22 7/8"-24 3/8" c-c

Bushings:
 TS96-22700/TS96-22700

Volvo: 20509568



TR96-49046

Torque Rod, Offset 22 5/8" c-c

LG: 22 5/8" c-c
Bushings:
 TS96-22700/TS96-22700

Volvo: 20443046



ATRO



- ATRO polyurethanes are 3-5 times stronger than rubber.
- Resistant to oils, grease, road salt, and other chemicals.
- Specific compounds optimize the performance of each part.



Contact Us

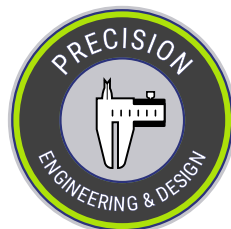
Phone: (800) 325-6114

Fax: (866) 920-2005

Email: customerservice@atrobushing.com

Website: www.atrobushing.com

ATRO, LLC
6 Bolte Lane
St. Clair, MO 63077 USA



ATRO Parts. Performance that drives your success.

ATRO, LLC | 6 Bolte Lane | St. Clair, MO 63077 USA | Phone (800) 325-6114

www.atrobushing.com

© 2024 ATRO, LLC